

# The Professional Painter & Decorator

## coo-var®

PAINTS, PRIMERS AND SPECIALISED COATINGS

**Whatever Floor You're  
Painting, We've Got It  
Covered!**

**Our Easy To Use Floor  
Paints Deliver Top-Notch  
Performance.**



**WWW.COO-VAR.CO.UK**



# Got Armstead in the van?



**JOB DONE!**

Find out more information at  
**[armsteadtrade.co.uk](http://armsteadtrade.co.uk)**



# The Professional Painter & Decorator

INCORPORATING THE PAINTING & DECORATING JOURNAL

|  |           |
|--|-----------|
| <b>News</b>  | <b>2</b>  |
| <b>Blonde Mahogany</b>   | <b>10</b> |
| Our specialist finishes expert Cait Whitson demonstrates this fine finish.   |           |
| <b>Be smart with SmartShield+</b>  | <b>12</b> |
| Here, Karen Wilkinson from Dulux Trade, looks at the thinking behind the company's latest new product launch, Dulux Trade Plus SmartShield+ and the opportunities it presents to decorators.   |           |
| <b>Contain that dust</b>   | <b>16</b> |
| A key indicator of Professionalism is the level of care taken to minimise disruption and mess, whilst the work is being done. With this in mind, Jeff Whittemore, of ZipWall®, offers an overview of its range of dust barrier solutions ideally suited for residential and commercial work. |           |
| <b>Johnstone's matt easy clean technology</b>  | <b>20</b> |
| In high-traffic areas walls are prone to stains and marks, and often require more maintenance to help them look fresher for longer. To help with this, Johnstone's Trade has developed a highly durable, cleanable matt emulsion, that includes easy clean technology.                       |           |
| <b>Sandtex Trade in central London Transformation</b>  | <b>24</b> |
| Revamping an office block in on-trend black.   |           |
| <b>A system for a perfect finish</b>   | <b>28</b> |
| Festool's Paul Kirby looks at how to achieve the best finish.  |           |
| <b>Dulux Academy Trainer profile: Mark Rigby</b>   | <b>30</b> |
| With over 30 years experience in the painting and decorating industry, Mark Rigby offers specialist knowledge and expertise. He currently trains at the Dulux Academy, which delivers hands-on learning.   |           |
| <b>Scratching the surface at Crown Trade</b>   | <b>33</b> |
| <b>Combatting condensation</b>   | <b>34</b> |
| Paul Cowell of IFM Select leads you through insurance options.   |           |
| <b>Insurance is on the up – but you still need it</b>  | <b>38</b> |
| We ask Festool's Paul Kirby about achieving the perfect finish.  |           |
| <b>Product testing: Random orbital sanders</b>   | <b>40</b> |
| <b>On test: Renault Kangoo Van ML19 dCi 110 Auto</b>   | <b>44</b> |
| <b>Marketplace</b>   | <b>47</b> |



**The National  
Painting & Decorating Show**  
**Nov 27th - Nov 28th 2018**

**Editorial** David Pescod  
**Advertising** Richard Daynes

Published by  
**DPA Publishing Ltd**  
Stoney Lane Barn  
Stoney Lane  
Bovingdon  
Herts HP3 0LY

**Editorial:** 01303 238002  
**Email:** davidpescod@aol.com

**Advertising & Subscriptions:** 01442 832715

**Production** The Orange Design Group

**Printed by** Wyndeham, Roche  
**Subscription** £18.00 p.a. (in the UK)

## Subscribe to the

**The Professional Painter & Decorator**

**only  
£18 per year**  
(including postage)



**It's the only way of ensuring  
you receive your copy**

Published 4 times per year -  
February, May, August & November

Make cheques payable to  
**DPA Publishing Ltd**

Orders can only be accepted with payment

Send to:  
**DPA Publishing Ltd**  
Stoney Lane Barn, Stoney Lane,  
Bovingdon, Hertfordshire HP3 0LY

### SUBSCRIPTION

Name: \_\_\_\_\_

Company: \_\_\_\_\_

Address: \_\_\_\_\_

Postcode: \_\_\_\_\_

Email: \_\_\_\_\_

## Johnstone's Painter of the Year

Johnstone's Trade has crowned its 35th Painter of the Year winner, who took home a new Ford Transit Connect van. Following a challenging shortlisting process involving over 100 entries, guests at the awards evening voted HEC Decorating Specialists Ltd to be both their Health & Education Category Winner and Supreme Winner for The Chocolate Works project in York.

Taking more than twenty decorators nearly five months to complete, The Chocolate Works Care Village was previously the home of world-renowned Terry's Chocolate Factory. Following a £7 million renovation involving over 3,000 litres of Johnstone's Trade paint, the site now has a new lease of life offering a care centre for working age adults.

Commenting on HEC Decorating Specialist's Ltd achievement, Dean Bednarek, Managing Director, said: "We're so excited to be crowned this year's Painter of the Year by Johnstone's Trade, it really means a lot. The Chocolate Works transformation was a huge job but such a fantastic project to be involved in. The new site will offer outstanding healthcare to lots of people who need it, and I'm really proud that our team could be a part of that. It was a brilliant team effort and we're really thankful to Johnstone's Trade for not only their help throughout the project, but for this award."

In addition to the Supreme Winner, three other entrants were also crowned on the night as part of the competition's sub-categories. These included:

- External Category Winner: The Cube, Folkestone by Alfred Bagnall & Sons Ltd.
- Restoration Category Winner: Victoria Palace Theatre, London by Broadley Group Ltd.
- Commercial & Leisure Category Winner: Everyman Cinema, York by Crosby Decorators Ltd.

## Bond It's new catalogue

Bond It, the manufacturer of sealants, adhesives and building chemicals, has published a new product catalogue. The 112-page document makes it easier to browse the company's range of over 500 different products.

Just some the recent products launched by Bond It include the Glue Monster range of adhesives and the Superhero range of adhesives and silicones. The business has also made a number of new additions to its highly popular range of PRO products, which are based on the latest hybrid polymer technology.

# WWD



## selection of paints



## Dementia led scheme for hospital

In search of a contemporary approach to the use of colour and contrast for its J16 ward, St James's University Hospital in Leeds sought the guidance of Dulux Trade and its team of Commercial Colour Consultants. Wanting to introduce a colour palette that supported those patients living with dementia, whilst still using a design led approach, staff at the hospital worked closely with Dulux Trade to create the ideal scheme.

"Information regarding the needs of patients living with dementia comes from a variety of sources with no set legislation, only guidelines," explains Tiffany Allison-Hall Commercial Colour Consultant at Dulux Trade. "Colour and the concept of contrast are often referred to however this can too easily be taken to the extreme.

Taking inspiration from the strong teal colour already found in the hospital's signage and avoiding previous schemes of bright reds

and yellows, the hues featured in the initial palette were harmonious tones that would sit either side of teal on the colour spectrum."

To bring this scheme to life, a block colour panel next to each ward bay entrance was widened to ensure its visibility, with white stencils used to number the individual bays. Experiencing a high level of confusion is a common symptom of dementia and patients needed to be able to identify their bed bay. A feature wall stripe within each bay was added to further differentiate the areas and to accentuate the white number stencils.

For all wall areas, the products used are part of the Diamond range from Dulux Trade, both the Matt and Eggshell varieties. Tough, water based emulsion paints, these products benefit from innovative Diamond technology, making them 10 times tougher than Dulux Trade's Vinyl range. Both paints also include



Stain Repellent Technology and will repeatedly wipe clean, making them ideal for high traffic areas such as corridors.

# TEST



**Brewers**  
DECORATOR CENTRES



Over 150 branches, for your nearest call 01323 411080 or visit [www.brewers.co.uk](http://www.brewers.co.uk)

## Master of the rolls title

Apprentice decorators from across the country are hoping that their skills will bring them out on top in a national competition next month.

Competitors will go head to head in the Apprentice Paperhanger of the Year, organised by national trade body the Painting and Decorating Association. The seven hour-contest is split into two

different categories – a new entrant and senior level.

In an ultimate test of nerve, the senior level competitors will be faced with wallpapering a mock living room, with extra challenges including a fire surround, internal angles and borders as well as inlay panels.

The junior competitors will be tasked with wallpapering a three-sided booth and all

work will be judged by an expert panel of industry professionals.

The winners of each competition will be announced at the PDA Conference Gala Dinner at the Hilton Liverpool City Hotel on Saturday, October 27, where they will be presented with a cash prize, trophy and certificate.

## Bringing colour to chemistry

PPG and the National Space Academy will continue their partnership to inspire young people to pursue STEM and space-sector careers through a series of free chemistry masterclasses throughout 2018.

Sponsored by PPG, the Academy masterclasses have been designed to give key stage two and three students a look at colour and material in the context of space. They will be delivered by the Academy's

team of leading expert science teachers from across the UK.

Featuring a number of practical experiments, the masterclasses will help students understand why certain colours are used most frequently in space projects, and they will be able to answer questions such as:

Why are rockets painted white?' Through the partnership with PPG, pupils will also get the opportunity to make their own paints and

test them to see how different colours absorb heat radiation.

Fully funded sessions are available for schools throughout the whole of the UK & Ireland. Additionally, schools within sixty miles of the National Space Academy's headquarters at the National Space Centre will be able to attend the masterclass at the centre itself, with PPG sponsorship also covering the travel costs.



Home  
ColourCare®

Woodcare  
Experts Since  
**1912**

*Bring colour to your  
furniture and flooring*

Home ColourCare – a NEW  
innovation in traditional woodcare



Decorative  
Furniture Wax

- Metallic and Pearlescent Finish
- Natural Wax Formula
- Resistant to Stains and Water



Decorative  
Furniture Varnish

- Highly Durable
- Multi-surface Varnish
- Easy Application



Decorative  
Floor Varnish

- Highly durable protection
- Contemporary metallic finish
- Suitable for old laminate floors

For more information on this new exciting range of woodcare products and stockists please get in touch  
[www.liberon.co.uk](http://www.liberon.co.uk) | 01797 367555

**V33**  
GROUP  
A V33 Group Company



**ULTRA  
GRIPPY  
BACKING!**



**\* 300% MORE  
SLIP RESISTANT THAN CANVAS!**

# **STAY PUT® CANVAS PLUS DROPCLOTH**

## **WITH SURFACE GRIP + SPILL BLOCK®**

- ✓ **SLIP RESISTANT + DURABLE**
- ✓ **SURFACE GRIP BACKING**
- ✓ **LEAK RESISTANT TO ALL PAINTS + STAINS**



Manufacturers of KleenEdge Low Tack Painting Tape  
01746 218091 | [www.trimaco.com](http://www.trimaco.com)

**Ciret** Ltd

UK distributor for Trimaco products  
02392 457450 | [www.ciret.co.uk](http://www.ciret.co.uk)



## Macmillan cancer support unites behind trades

Macmillan Cancer Support is uniting with nine companies from the construction, electrical and home improvement sector for their 'Just Say the Word' male cancer campaign. Benchmark Kitchens and Joinery, CEF, ISG plc, Mace, Selco Builders Warehouse, telent Technology Services, Topps Tiles, Travis Perkins and Wolseley have joined forces with the charity to raise awareness of the impact of cancer on men and encourage those who need it to access support.

Back for a third year, 'Just Say the Word' is supported by more companies than ever before. These businesses will put aside their commercial differences to support men living with cancer and their families. Previous years have seen a great response with some colleagues and customers reporting the campaign inspired them to seek vital medical support.

Carine Jessamine, marketing director at Selco Builders Warehouse, said: "We are long-standing supporters of Macmillan Cancer Support and, through the amazing efforts of our staff, customers and suppliers, have raised over £500,000 for the charity within the last five years. We are all as motivated as ever to keep up the fundraising and we are also delighted to support the 'Just Say the Word' campaign to help spread key messages to people operating in the trade."

The importance of seeking support is emphasised by the emotional

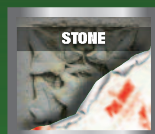


issues reported by tradesmen with a serious illness such as cancer. Over 1 in 3 (36%) experienced depression, 2 in 5 (40%) anxiety and 1 in 10 (12%) shame, after they were diagnosed.

Pete Dolan is 35 years old and works for Travis Perkins. He was diagnosed with testicular cancer in 2015. "I know lots of friends and colleagues struggle to talk about the serious stuff, but I always try to be open. I don't think bottling stuff up helps. I've found humour is a really good way of dealing with conversations about my cancer and often make jokes about having one ball. I think it stops people treating you differently as it's a subject that it's very easy to be embarrassed by."

### The Original Poulitce Paint Removal System **PEELAWAY®**

THE SAFER, MORE EFFICIENT WAY TO REMOVE ALMOST ANY TYPE OF PAINT OR VARNISH IN ONE EASY APPLICATION FROM A VARIETY OF SUBSTRATES.



**ARCHITECTURALLY SPECIFIED ✓**

**METHYLENE CHLORIDE FREE ✓**

**ENVIRONMENTALLY SAFER FORMULATION ✓**

### **PEELAWAY® 1**

The Poulitce Paint Removal System 1

- **EASILY REMOVES UP TO 32 COATS** of Paints & Varnishes containing Oil, Lead Polyurethane or water.
- Suitable for Wood, Brick, Stone, Concrete, Marble, Decorative Plaster, Cornices and Plaster walls.
- Also removes painted wall paper.
- Water-based Alkaline formulation.

### **PEELAWAY® 7**

The Poulitce Paint Removal System 7

- **EASILY REMOVES UP TO 20 COATS** of Architectural, Domestic, Industrial and Marine Coatings.
- No dangerous fumes or toxic particles.
- New modern alternative for PEELAWAY 1.
- Does not require neutralising on application.



A **FREE Peeloway DVD** is available on request.



**Barrettine**  
TRUSTED BY THE PROFESSIONALS

St. Ivel Way, Warmley, Bristol BS30 8TY.

T: 0117 960 0060 F: 0117 935 2437 E: sales@barrettine.co.uk

www.barrettine.co.uk





# Dulux ACADEMY

Your steps  
to a great  
career

Discount code: **Intro20**

**20%**  
off  
all courses\*

At every stage of your decorating career, our **Dulux Academy courses** can deliver increased knowledge and understanding, enabling you to meet your personal and professional ambitions. And, with a **20% discount\*** available, there has never been a better time to book.

\*Terms & Conditions: Enter discount code **Intro20** when booking online at [www.duluxacademy.co.uk](http://www.duluxacademy.co.uk) to receive a 20% discount on Dulux Academy team delivered courses. Offer does not include City and Guilds qualification course or external 3rd party courses. Offer is valid on bookings made before 31st July 2018 and cannot be used in conjunction with any other offers or discounts. No cash alternative.

[www.duluxacademy.co.uk](http://www.duluxacademy.co.uk)

## Mural painter says tesa® tapes 'faultless'



Over 48,000 people admire Chris Ashmore's work on social media, and the Director of Creative Murals and Portraits says he would recommend tesa® tapes to any one of them. Chris specialises in creating murals for any wall or surface and has brought bespoke ideas to life in people's homes and businesses all over the UK. Some of his most popular work has been designing and painting children's bedrooms, with football, superhero and Disney themes receiving glowing reviews and going viral on social



media. Part of the preparation stage for Chris's work includes masking all skirting boards, ceilings, carpets, light switches and plug sockets. A clean edge is instrumental for the finished painted mural, and Chris uses tesa tapes to achieve this effect, "Pink tesa sensitive on wallpaper is faultless, I could not ask for a better product", he says. "I get asked to paint pictures on top of brick wallpaper a lot and now I've discovered Pink tesa tape, I wouldn't be confident going to a job without it."

## Dulux Select Awards

This year's four winners included: Aaron Davidson, Anthony Nolan, Nick Dodge and Grand Winner Trevor Mangan. Aaron Davidson won the £1,999 and below Interior category for his outstanding work redecorating a domestic hall, stairs and landing. This extensive project required skill and expertise as the walls were in a bad state of repair. Aaron said: "Winning the Dulux Decorator of the Year award has really helped me to raise my profile even more - and I am now booked up almost seven months in advance."

# GET A GRIP!

**One coat, high performance plasterers grip coat bonding agent.**

Febond Blue Grit is a high performance, plasterers grip coat bonding agent specifically designed to provide an improved key to smooth surfaces. Containing a fine aggregate, it provides a mechanical key to backgrounds such as plaster, concrete, painted surfaces, textured surfaces and ceramic tiles. One coat application, coloured blue to indicate coverage.



A SIKA COMPANY

**Everbuild Building Products Ltd**  
- A Sika Company

Site 41, Knowsthorpe Way, Cross Green  
Industrial Estate, Leeds LS9 0SW  
Tel: 0113 240 3456 Fax: 0113 240 0024  
Website: [www.everbuild.co.uk](http://www.everbuild.co.uk)





# FASTER BRIGHTER LONGER



NOW AVAILABLE  
IN A WIDE RANGE  
OF COLOURS



BREATHES EASY®  
FORMULATION



ADVANCED WATER  
BASED TECHNOLOGY



EXCELLENT  
FLOW



INTERIOR &  
EXTERIOR USE

Crown Trade helpline  
0330 024 0297

Email  
[info@crowntrade.co.uk](mailto:info@crowntrade.co.uk)

For more information on the Crown Trade range visit: [www.crowntrade.co.uk](http://www.crowntrade.co.uk)

It's not just paint.  
*It's personal.®*



# Blonde Mahogany

Cait is decorative painter working throughout UK and teaching from her studio in Perth, Scotland. You can see her work and connect with her on social media; Twitter and Instagram - @paintycait or Facebook - <https://www.facebook.com/carteblanchedecorativepainters/>

Mahogany comes in so many different colours and often the tone is not the traditional red that many grainers were taught to create. Often it is quite golden so in this article I have chosen to demonstrate a blonde mahogany starting with a light base.

**The basecoat** is Benjamin Moore AF325 (similar to BS 08C31)

**Materials used were** – beer glaze and oil glaze. The beer glaze was made from a stout allowed to go flat and thinned 1:3 with water. The oil glaze is a mix - first 1 part raw linseed oil to 3 parts white spirit and add 10% terebine driers. Then take this mix and add 50% Osmo Polyx Oil Varnish to it. This feels not dissimilar to the old Ratcliffe's oil glaze that many of us still mourn.

**Tools used were** – Flogger, mottler, camel cutter, overgrainer and softener

**Stage 1** The first stage is carried out in beer glaze flogged and also spattered. Mix the glaze with Vandyke Brown gouache or powder, apply and flog. The middle I left a little open and for this area dip a spatter brush (a small stencil brush works well too) into the very bottom of the pot where the colour had settled and spatter drops of colour onto the panel, softening these up and down to give



slightly longer darker pores. Varying the very base layer gives interest in the final piece – subtle but nice.

**Stage 2** Once dry, apply clear oil glaze all over the panel – then sketch in your shape using artists oil colours. I used Burnt Umber, Vandyke Brown and Black. Using the mottler, work through the darker sketched-in colour to create the mahogany movement.



Hold your mottler at an angle as if the top edge of the brush was at 1 o'clock on a clock and the bottom of the brush at 7 o'clock on a clock and keep that angle moving the hand from the shoulder and not from the wrist will help avoid "hoop" shapes that look somewhat unnatural.

**Stage 3** Then start to wipe out sections using 2 key tools – the camel

**Stage 3****Stage 4**

hair cutter and pad of cloth. Looking at veneers helps you to recognise exactly where to wipe away. Create the distinctive slightly stripey side grain at the sides by pressing your fingers into the mottler and drawing it through the glaze. Using a softener soften away from the heart, in this case up and out. Once this has set up nicely you can create some grain through the figure using an overgrainer. Dip the overgrainer in clear glaze and dab off the excess,

open the bristles with a brush comb and draw it across the crotch figure evenly. Now soften, don't worry if some of this is lost in the softening as it can be done again at the final stage.

**Stage 4** The final stage is to overgrain. Once dry apply clear oil glaze all over and tone the panel using colours Burnt Umber, Vandyke Brown and Burnt Sienna, I also added a touch of Venetian Red. Using the mottler shape the glaze so it follows

your previous work and adds depth. Lift out some areas in the darkest part of the wood to give highlights, fine lines that draw down into the heart of the wood can be created with the cutter or you can use a piece of card wrapped in cloth. Soften and allow it to set up well and use the overgrainer in the same way as before, this time take care not to over-soften and lose the definition. Complete the work with a semi gloss varnish.



# BE SMART *with Smartshield+*



Here, Karen Wilkinson from Dulux Trade, looks at the thinking behind the company's latest new product launch, Dulux Trade Plus SmartShield+ and the opportunities it presents to decorators.

It is estimated that nearly a third of UK properties are of solid wall construction and in recent years there has been an increasing focus on how we can improve their thermal efficiency, as part of an overall drive to improve energy efficiency and reduce carbon emissions.

In homes of solid wall construction, it is estimated that up to 45% of the heat escapes through the walls - with excess moisture contained within the walls being a

contributing factor. In fact, walls with higher moisture content release significantly more heat than those with a lower moisture content.

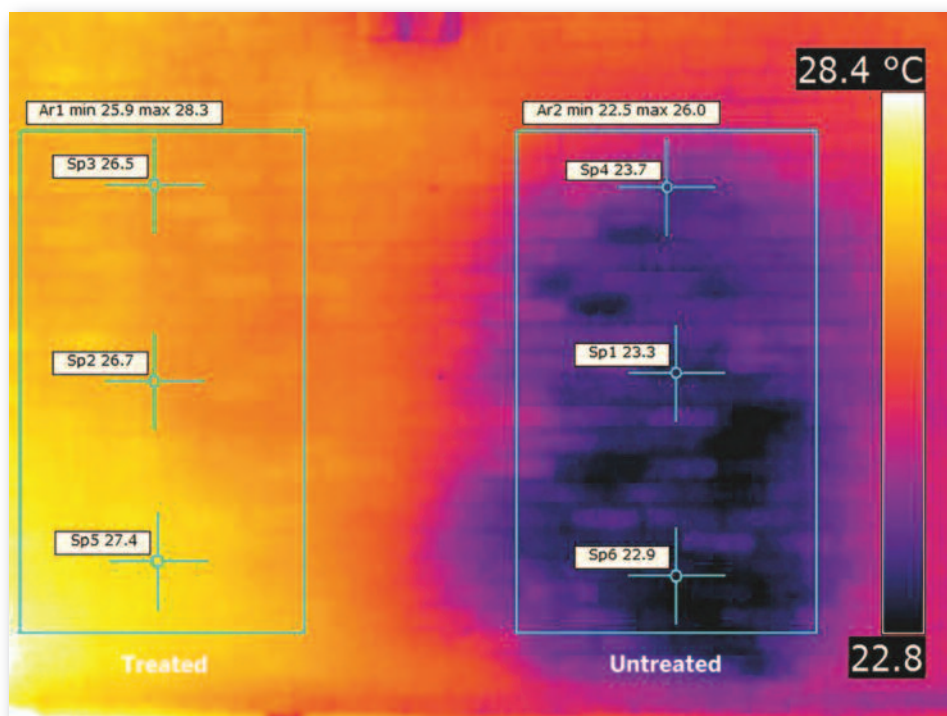
Recognising this issue, Dulux Trade has launched Dulux Trade Plus SmartShield+. Designed specifically for undecorated external brickwork, it provides invisible protection against rain - reducing water ingress whilst allowing the wall to breathe and dry out. Applying Dulux Trade Plus

---

VAN GOGH  
DID IT. CÉZANNE  
DID IT. WE DO IT. WE  
SIGN EVERY SINGLE  
MASTERPIECE WE  
MAKE TOO.







## BRE Testing of SmartShield+\_Thermal Image

Dulux Trade Plus Smartshield+ underwent BRE testing (report: P103840-1000) to assess its effectiveness on water penetration of masonry walls. As shown in the thermal image above - simulated wind driven rain was applied to the boxed areas, one treated and one not, and then evaluated after 10 days.

SmartShield+ to a solid construction wall can help to improve the thermal efficiency compared to untreated brickwork.

In addition, SmartShield+ helps to reduce the risk of damage caused by freeze-thaw cycling – a phenomenon that can potentially cause damage to brickwork.

### Testing

To ensure its effectiveness, the product underwent testing with BRE – the British Research Establishment. The testing was carried out to assess the efficiency of Dulux Trade Plus SmartShield+ on water penetration of masonry walls, by undertaking water spray tests (including simulated wind driven rain) on both a treated and an untreated section of brick wall on a BRE test house\*.

In addition, Dulux Trade Plus SmartShield+ has received certification from the British Board of Agrément (BBA)\*\*\*, with the key factors of assessment being: water penetration; condensation risk; freeze/thaw resistance; UV resistance and durability. Receiving certification from BBA – a body

committed to helping businesses supply high-quality products to the construction industry – reassures trade professionals and appliers that the product achieves the standards set out by Dulux Trade.

### Application

Dulux Trade Plus SmartShield+ can be applied by professional painters and decorators – expanding the list of services they can offer their clients. In addition to the product data sheet, a simple “how to” video is also available to offer application training information.

Dulux Trade Plus SmartShield+ is perfect for low-pressure spray application, but can also be applied by brush or roller, and depending on temperature and humidity, the coating can be rain resistant in as little as 30 minutes – with it being completely dry in less than two hours.

The formulation covers up to 2m<sup>2</sup> per litre per coat depending on the application method and absorbency of the substrate. Whilst SmartShield+ may only require one application for less absorbent surfaces, it is

recommended that two or three coats should be applied for more porous substrates.

With nearly a third of buildings in the UK of solid wall construction, Dulux Trade identified a need for an easy-to-apply solution that protects undecorated exteriors, maintains their natural beauty and boosts energy efficiency. The product helps to create beautiful, comfortable spaces for homeowners, whilst providing appliers with a reliable product that is easy to apply.

**To find out more about the new SmartShield+, please visit**  
[www.duluxtradepaintexpert.co.uk](http://www.duluxtradepaintexpert.co.uk)

\* Report number P103840-1000 Issue 1  
 \*\* Certificate number 16/5351







**WERNERCO™**

# THE INDUSTRY'S MOST HIGHLY DECORATED LADDERS.

We know how important it is for you to have the right tools to do your job. Our ladders are designed with you in mind and come with additional features to help to make your job easier and productive.

**Your safety is our priority.**  
That's why all our ladders are tested to the highest standard using latest state of the art technology.

**Available from all  
leading Decorator  
Centres throughout  
the UK.**



**YOUNGMAN®**



# Contain *that dust*



For those looking to hire a decorator, professionalism is often equally as important as skill level; and a key indicator of this is the level of care taken to minimise disruption and mess, whilst the work is being done. With this in mind, Jeff Whittemore, of ZipWall®, offers an overview of its range of dust barrier solutions ideally suited for residential and commercial work.

When redecorating a customer's home or working on a big commercial project – such as a large office space – mess and dust can be a major issue. Whether you're creating dust from sanding down, or you plan to spray paint a room, specialist dust barrier systems are an easy alternative to tape and plastic sheeting – and look much more professional too. The ZipWall® Dust Barrier System offers an easy to install solution that separates the worksite from the rest of the building, protecting it from potential damage and subsequent repairs.

Crucially, this allows professional painters and decorators to show a duty of care to their customers by taking responsibility for their workspace and surrounding areas, making the process as comfortable as possible for everyone. However, dust can also cause major problems by ruining newly decorated areas – especially when additional works are going on elsewhere in the property.

The ZipWall® Dust Barrier System is a credible solution as not only does it protect the surrounding area from the



**MIRKA**



# Mirka<sup>®</sup> LEROS



red dot design award  
best of the best 2018

## Pure Innovation.

Less than 3.5 kg. 180° flexibility. 100% comfort.



[www.mirka.co.uk/MirkaLEROS](http://www.mirka.co.uk/MirkaLEROS)



infiltration of dust, but it can also form a barrier around wet surfaces to protect them from dust. Additionally, with decorators often working on just one area at a time, dust barrier systems are a valuable tool.

Already hugely popular in the US, the ZipWall® Dust Barrier System is now making its mark in the UK. The dust barrier system is easy to install and flexible - meeting room size requirements for the majority of projects. Crucially, the ZipWall® Dust Barrier System requires no tape, allowing the user to set up a barrier in just a few minutes - as well as leaving no damage to surfaces. By using the ZipWall® range of solutions painters and decorators can finish a project efficiently and professionally.

### Ease of use

The main component of the ZipWall® Dust Barrier System is the patented spring-loaded pole, with telescoping action, that secures the barrier in place. The poles are available in a range of sizes from 3m, 3.6m and 6.1m. The 3m poles are made of stainless steel and the others of anodized aluminium. These poles are strong and lightweight, for example, one 3m pole weighs around just 0.8kg, meaning one person can handle with ease.

Featuring a unique spring-loaded design and effortless locking system, the poles are quick, easy and safe to position. A non-skid, non-marking head and plate allows the plastic sheeting to be raised with the pole, holding it securely in place without damaging the ceiling. Users then simply adjust the height as needed and twist to lock it into position.

The quick set up of the system minimises time spent preparing for jobs as well as taking down and re-erecting the next day, benefitting both the decorators and the end client, as work can be completed quickly and efficiently.

### Step this way

To enhance dust protection further, there is also a range of add-on products.

ZipWall® Heavy-Duty Zippers are an ideal solution for painters and decorators who need to create a doorway in a plastic barrier in seconds. The self-adhesive zippers also come with a patented sheeting cutter that prevents zipper jams, and two flap hooks that hold the entryway open for easy access.

For existing doors, ZipDoor® kits are particularly useful during remodelling, restoration or any other overly messy project. The door panels come with pre-installed heavy-duty zippers that create a

seal when closed and allow easy access when held open with the supplied flap hooks. Each kit comes with ZipWall® double-sided tape, which has been specifically designed with a strong adhesive on one side for securing the plastic door and a gentle adhesive on the other side that protects the doorframe.

### A greener approach

Commonly used with polythene sheeting, ZipWall® also offers Zipfast™ Reusable Barrier Panels which provide a green alternative. No cutting or measuring is needed. The reusable panels can be quickly and easily zipped together to build a dust barrier which perfectly suits the requirements of any residential or commercial project. Suitable for machine washing, these reusable panels are more economical than plastic sheeting.

The simplicity and secure protection provided by ZipWall® products conveys a professional message from the outset - and by ensuring superior protection from dust and dirt achieves a long lasting good impression that will generate referrals for years.

**For further information about ZipWall® and its comprehensive range of dust barrier solutions, please visit:**  
<https://www.zipwall.co.uk>



Woodcare  
Experts since  
**1912**



# Win with Liberon!

**Enter for a chance to win a £100,000  
Home and Garden Renovation!**

To have a chance to win, purchase a qualifying product  
from the Liberon range of Exterior Woodcare and visit  
**[www.winwithliberon.co.uk](http://www.winwithliberon.co.uk)** to enter.



## Qualifying products

Extreme Woodstain | Exterior Wood Protector | Decking Oil | Exterior Furniture Cream | Decking Paint  
Garden Furniture Oil | Decorative Woodstain | Decorative Furniture Oil | Shed & Building Paint

For more information on Liberon exterior  
products visit [www.liberon.co.uk](http://www.liberon.co.uk)




A V33 Group Company

For your chance to win, purchase a qualifying product from Liberon's extensive range of exterior woodcare products. Visit [www.winwithliberon.co.uk](http://www.winwithliberon.co.uk) and rank 10 statements from most to least important. If your choice matches that of the judging panel you win. See full terms and conditions online. Closing date 31st August 2018. One entry per person. Open to UK residents aged 18 plus. Till receipt required. All entrants will be entered into a Free Prize Draw to win one of 10 £100 Liberon product vouchers.



# Johnstone's Matt

## easy clean technology

A man with short brown hair, seen from the side, is painting a white wall. He is wearing a white shirt with a black strap over his shoulder. He is holding a paint roller with a black handle and a white, textured roller head. The roller is in contact with the wall, and a small amount of white paint is visible on the wall where it is being applied. The background is a plain white wall.

In high-traffic areas walls are prone to stains and marks, and often require more maintenance to help them look fresher for longer.

To help with this, Johnstone's Trade, developed a highly durable, cleanable matt emulsion, that includes easy clean technology. Richard Mazurkiewicz, of Johnstone's Trade, shares insights into how the product was developed following extensive testing and feedback from painting and decorating professionals.

**Q1. How did you go about developing cleanable matt to ensure it was the best matt emulsion you have ever produced?**

At Johnstone's Trade, we like to ensure that we continually improve the products and services we offer to customers. Which is why, before we bring a new product to market, it undergoes rigorous testing to guarantee that it's fit for purpose and will meet the needs of the professional.

To develop the Cleanable Matt premium emulsion, our technical team conducted extensive research, and developed a formulation. To really put it to the test we trialled the product on some of the most common domestic and commercial setting stains including; red wine, tea and coffee, crayons, grass, mud, shoe marks, and even lipstick. We focused on high-traffic areas

such as offices, universities and shopping centres. The results were very positive.

Ultimately, the development of this technology resulted in the creation of a premium emulsion with the ability to repel stains, both liquid and chemical, from setting into the paint through its easy clean technology. Freshly painted walls can simply be cleaned with warm soapy water, and for more stubborn stains, standard household cleaner can be applied to the area (however always check the reverse of the cleaning products packaging).

**Q2. In addition to testing, did you carry out any other research to ensure the product would meet the demands of the industry?**

We strongly believe that engaging with industry professionals is the best way to gain invaluable insight into what products



For the perfect edge...



**masq**  
Coming soon

**ROTA!**

**kana**

**masq**

**prep**

[www.ciret.co.uk](http://www.ciret.co.uk) +44 (0)2392 457450

they would like to come to market, including the specific properties they are looking for in new technology to improve their projects.

To reach out to industry professionals, we decided to get in touch with members of the Decorator's Forum - a Facebook group set up to allow professionals from across the painting and decorating industry to share tips and advice with each other. We held a 'behind the scenes' day and invited the forum members to our head offices in Birstall, Yorkshire, to give their feedback on our Cleanable Matt emulsion before it launched to the market. This is an integral part of the Johnstone's 'Tradeology'.

During the day, attendees got an insight into the paint manufacturing process, and learnt about the history behind PPG and Johnstone's brand. Members had an exclusive first-look at Cleanable Matt and were even able to demo the product, testing both for its application properties and clean-ability.

The feedback we collected was really positive and we hope to host many more event days with painting and decorating



professionals.

### Q3. Which environments is the product most suited to and what key benefits does it offer?

Johnstone's Trade Cleanable Matt emulsion is durable enough for use in commercial settings but is also perfect for domestic environments, such as high-traffic areas and

areas likely to stain such as kitchens, stairways and hallways.

For these settings, Cleanable Matt offers a long-lasting finish that looks newer for longer. Walls can be cleaned on a frequent basis without impacting on the finish. Furthermore, it is a flexible product that can be applied by airless spray, as well as brush or roller, which helps to increase productivity and satisfies the needs of the spraying professional.

In fact, the product is 40 times more durable than standard matt emulsion and is highly durable in over 10,000 scrub cycles. The product also achieves an ISO 11998 class 1 scrub rating making it highly durable and ensures a matt finish for longer.

Johnstone's Trade Cleanable Matt is available in the new Voice of Colour, a colour palette exclusively from Johnstone's Trade, which now makes this product available to mix in any colour. For more information on the product or other leading professional paints, please visit:

[www.johnstonestrade.com/cleanablematt](http://www.johnstonestrade.com/cleanablematt)



Don't *just* decorate... **BEDEC-ORATE!**

**Innovators in Water-based Technology**

Bedec Products Ltd., Units 1 & 2 Poplars Farm, Aythorpe Roding, Dunmow, Essex. CM6 1RY

**Tel:** +44 (0) 1279 876 657

**Email:** [info@bedec.co.uk](mailto:info@bedec.co.uk)

**www.**[bedec.co.uk](http://www.bedec.co.uk)





## tesa® builds on its quality reputation

As part of tesa's efforts to build long-term, successful relationships with the trade, the company remains focused on product innovation; exemplified by the extensive range of products designed to enhance the quality and performance of outdoor applications.

Addressing the key factors involved to get the best results possible when working outdoors, where temperature and the elements can affect the finished results, tesa has developed its Professional range of high quality adhesive tapes to meet these demanding conditions.

Building protection and repair tapes need to be more robust than general outdoor masking tapes as instead of masking flat, smooth surfaces like window frames, they have to be able to stick and conform to rough surfaces like brickwork or render.

**tesa® 4843 Premium Plastering Tape**, more commonly known as 'builders' tape, offers good protection of smooth and slightly rough surfaces and is ideal for outdoor applications requiring high adhesion power. With an extra strong PVC film backing, it is resistant to acids, bases and

other chemicals, does not leave any residue and can be applied at temperatures as low as 0°C.

Similarly, for professional paint jobs, **tesa® Professional 4440 Precision Mask® Outdoor tape** leaves no paint bleed. The combination of its extra-thin Japanese rice paper backing adhesive and the outstanding special adhesive formulation allows for easy removability up to 26 weeks after application, enabling multiple working processes in only one covering process.

**Download the Professional Decorator App:**

**tesa® PROFESSIONAL**

# FOR RESULTS YOU BUILD YOUR REPUTATION ON

**RAZOR SHARP PAINT EDGES <**  
**NO PAINT BLEED <**  
**SAVE TIME – NO CUTTING IN <**

[tesaUK](#)
 [tesaUK](#)
 [@tesaUK\\_tape](#)
[tesa.co.uk/craftsmen](http://tesa.co.uk/craftsmen)

**tesa® 4440 Precision Mask® Outdoor** is UV and humidity resistant. Suitable for smooth and rough surfaces, it can be used with water and oil-based paints providing a sharp paint edge for window and door frames.



**tesa® 4843 Premium Plastering Tape** protects surfaces like window frames and facings from damage through plastering materials or tools. Hand-tearable and UV-resistant, **tesa® 4843** leaves no residue on surfaces such as concrete, brickwork and render and provides optimum protection for plastering, painting, gypsum, masonry and stucco work. Coated with a special ageing-resistant adhesive compound, it offers excellent resistance to humidity, weak acid and alkaline solutions.





# Sandtex Trade

## in Central London transformation

**Sandtex Trade scaled new heights to revamp a Central London office block – without a ladder in sight.**

20 Farringdon Road has been transformed into a contemporary workplace in the heart of the city following a stylish refurbishment project undertaken by specialist abseiling contractors Rubynest. Their specialist 'working at height' team worked from temporary cradles to apply the Sandtex Trade trims system to metalwork on the building's windows.

Sandtex Trade Rust Inhibiting Primer Undercoat, Flexible Primer Undercoat and Eggshell X-Tra were used to create the on-

trend black finish. An adhesion promoting formulation which provides the foundation for Sandtex Trade Eggshell X-Tra, Rust Inhibiting Primer Undercoat was used on the deteriorated areas of the metal work.

Sandtex Trade Flexible Primer Undercoat was then selected for application on the rest of the building, as it can flex with the substrate and alleviate flaking and cracking. The project was completed with Sandtex Trade Eggshell X-tra, which features a smooth and extra durable formulation offering long-term protection, with added inhibitors to reduce the impact of UV damage.

Tom Lulham, Director at Rubynest, said: "We found the Sandtex Trade products to be very good and the viscosity of the product was great. The technical help and support we

received was also excellent."

Rubynest's abseilers took eight months to complete the project – with a team of 10 to 15 people working seven days a week.

Temporary cradles were constructed on the full 30 metre elevation and a crash deck and protection fan were also put in place.

Tom added: "I think what was most unusual about this project was the sheer size of it.

"There aren't that many buildings in London of this magnitude where you would be carrying out this type of work.

A video has been produced about the work at 20 Farringdon Road, which can be viewed at <https://www.youtube.com/watch?v=Y6R8LCRyTYE&feature=youtu.be>.

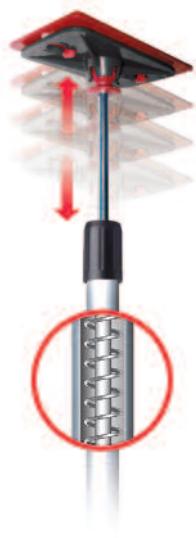


# ***Start every job with ZipWall®!***

***Protect  
client property  
– and freshly  
painted surfaces –  
from dust***



Spring-loaded poles up to 6,1 m high



Easy to set up

Save time and money

Improve safety

***See how  
it works at  
[zipwall.co.uk](http://zipwall.co.uk)***

***Set up a dust barrier in  
minutes!***



# THE ULTIMATE VIVARO.

The Vivaro Doublecab comfortably seats up to six and still delivers the right amount of loadspace and payload. The absolute best of both worlds. Spec it up to Limited Edition Nav and get even more.

## VIVARO LIMITED EDITION NAV

SATELLITE NAVIGATION | 17" ALLOY WHEELS  
AUTOMATIC LIGHTING | RAIN-SENSITIVE WIPERS  
SMARTPHONE DOCKING | VEHICLE GRAPHICS

For more information call 0345 740 0777 or visit  
[www.vauxhall.co.uk/vans](http://www.vauxhall.co.uk/vans)

Official Government Test Environmental Data. Fuel consumption figures mpg (litres/100km) 42.8 (6.6) – 51.4 (5.5), Combined: 40.9 (6.9) – 47.0 (6.0). CO<sub>2</sub> emissions: 178 – 155g/km.<sup>#</sup>

<sup>#</sup>Fuel consumption information is official government environmental data, tested in accordance with the relevant EU directive. Official EU-regulated test data are provided for comparison





**VAUXHALL**

and CO<sub>2</sub> emissions (g/km). Vivaro Panel Van range: Urban: 35.3 (8.0) – 40.9 (6.9), Extra-urban:

purposes and actual performance will depend on driving style, road conditions and other non-technical factors. Correct at time of going to press.





# A system for a perfect finish

Festool's Paul Kirby looks at how to achieve the best finish.

**W**e're all looking to improve the way in which we work, whilst improving end results. With the rising expectation in today's market for the perfect finish it is now more important than ever to look at how we achieve these results in order to remain competitive.

## **Importance of working with a system**

To achieve high quality finishing it is crucial that the preparation is faultless and you work with a system that performs with consistent high quality because any imperfections at this stage will be magnified during the finishing process.

A system is more than just the type of finish you use and the materials you apply it to, it is also the way in which you treat these materials. For example the type of sander (linier, random orbital or eccentric), the type of abrasive and the correct extraction unit can all work together to create an efficient system that will constantly enable professional results.

## **Sanders**

When dealing with predominantly soft fillers and water based paints it is important to use the correct type of sander. Festool's range of eccentric sanders like the ETS EC 125 give the user a high quality, flat and scratch free finish. This is achieved thanks to the



eccentric motion of these sanders. For every rotation of the sanding pad there is also a smaller orbit happening meaning the grit on the abrasives is not repeating any cutting patterns and is able to cut much finer than traditional orbit or liner sanders.

Festool's sanding motion combined with the GRANAT abrasive, with its high quality ceramic coating and flat distribution of grits on the abrasive pad, means you have a high removal rate without the danger of leaving unwanted scratch marks behind. Combine the right sander and abrasive with extraction and you have an incredibly efficient and long lasting solution.

## Dust extraction

The benefits of dust extraction are still



underestimated in the UK. Not only for the obvious personal health reasons but for the benefits to the consumables and tools, because the dust extractor reduces the amount of work your consumable has to do. This means the abrasive is kept from clogging with waste material resulting in an increased life span and effectiveness of the abrasive.

When working with soft materials like

gypsum it is important to use the correct type of extraction unit. These types of soft materials often have a high silica content which is not only damaging to your health but can also quickly clog the bag or filter of a normal extraction unit. Festool's solution is the CTM 26 Auto Clean extractor. The Auto Clean function works with an open bag system meaning the waste material is

drawn to the filtration unit and then automatically knocked off every 12 seconds, cleaning the filter. This enables continuous suction for the user to work without interruption.

Working with a system is so important in allowing you to achieve the high quality results you want. From the right sanding paper to the right dust extractor, it all contributes to improving the end result.

# MADE FOR BUSY AREAS



A HARD-WEARING MATT EMULSION WITH A WASHABLE FINISH. THE STAIN & MOISTURE RESISTANT FORMULA PROVIDES LONG LASTING PROTECTION, MAKING IT IDEAL FOR BUSY AREAS.



T: 0330 024 0313

W: [WWW.MACPHERSONTRADE.CO.UK](http://WWW.MACPHERSONTRADE.CO.UK)





# Dulux Academy

## Trainer profile: Mark Rigby

With over 30 years experience in the painting and decorating industry, Mark Rigby offers specialist knowledge and expertise. He currently trains at the Dulux Academy, which delivers hands-on learning.

After leaving school as a teenager, Mark took a four year apprenticeship whilst continuing at a higher education college. There he gained his City and Guilds Certificate in Painting and Decorating and Advanced Craft.

He then went on to set up his own decorating business for domestic, commercial and new-builds. Working hard to deliver a high-quality service, Mark

developed a good solid reputation with his customers. From the beginning of his career, he also understood the advantages attending regular training courses afforded him – allowing him to keep up to date with products and processes, and to continue to improve upon his skills.

Throughout his career Mark has also won a number of industry awards. His hard work and dedication to perfection led him to become a judge for Dulux student competitions where he developed a passion for encouraging a new generation of painting and decorating professionals.

Dedicated to changing the perception of the painting and decorating industry, Mark joined the Dulux Academy at its creation. He is now one of the Academy's specialist trainers.

"Working for Dulux Academy is inspiring," commented Mark. "The opportunity to pass

on my own knowledge and expertise to others working within the industry, especially the younger generation, is extremely fulfilling. I am proud to be equipping those that visit the Academy with a strong skill set, which will carry them forward in their journey to a professional career."

To find out more about the Dulux Academy, please visit <http://academy.duluxtradepaintexpert.co.uk/index.php>

**With a team of experts delivering specialist courses, the Dulux Academy is dedicated to improving the quality and knowledge of a new generation of painters and decorators and upskilling those looking to fulfill their personal ambitions. Courses help to showcase products and application innovation, teaching the most up to date techniques and technologies.**



#designedbydecorators



/axusdecor



[www.axusdecor.com](http://www.axusdecor.com)

**ALUMINIUM  
DIE-CAST  
BODY**



**METAL HYPER PRO**



Distributed by



[www.olfatools.co.uk](http://www.olfatools.co.uk)

**AXUS DECOR &  
OLFA STOCKIST  
INFO:**

020 8204 1422

[info@axusdecor.com](mailto:info@axusdecor.com)





# ***Covers Everything!***

National Painting and Decorating Show 2018  
RICOH ARENA, COVENTRY 27/28 November

Go to [www.paintshow.co.uk](http://www.paintshow.co.uk) for free tickets or call 020 8645 2433



# Scratching the surface at Crown Trade



As a professional decorator you'll no doubt be familiar with Crown Trade's range of products. But our product range is only part of our story... read on to find out more about what Crown has to offer.

## Continual product innovation

This is at the heart of everything we do. Our team of scientists and dedicated expert testers, many of who are former professional decorators, are continually looking for ways to improve and expand our product range to meet your every need.

We've recently made full colour tinting available across our popular water-based Fastflow system, giving you and your customers even greater choice of colour for interior and exterior joinery and metalwork. Keep your eyes peeled for more product news and updates throughout the year.

## Commitment to colour

Speaking of colour, did you know that Crown has a collection of tools you can draw on to help your customers discover the colour that's just right for them?

As well as colour tinting to match any RAL shade, our detailed colour cards highlight complementary shades for a variety of projects, from historic homes to modern office spaces, while our website has information on the latest trends, regulations and inspirational images

by the bucket-load. Whether you need a paint colour match to a pair of curtains or create a colour scheme for a school or hospital which complies with the relevant building regulations – our colour experts are on hand to guide you through the process.

## Getting the green light

Protecting our environment is a key issue for us all but when you choose a Crown product, you can relax as we have done all the hard work for you.

Through our Earthbalance® scheme, which recently celebrated its 10th anniversary, we've developed a truly sustainable range, securing Environmental Product Declarations on six of our most popular products. We take a product's full lifecycle into account, ensuring that when applied correctly they'll last longer to reduce future maintenance cycles. Thanks to our Can Back scheme, we've also recycled thousands of empty paint cans, turning them into benches through social enterprise Nimtech.

## Supporting the next generation

We're passionate about the future of painting and decorating so we're proud to have been able to support the CITB's annual Apprentice Decorator of the Year Competition for the last 39 years. This year's regional heats are well underway and we're already looking forward to the national final which will be held at WorldSkills UK LIVE this November.



## Regional focus

With a network of more than 140 Crown Decorating Centres stretching across the UK from Exeter to Inverness and everywhere in between, you're never far away from a Crown Decorating Centre. This year we're investing in the network with a number of new stores set to open – bringing our full range of paints, sundries and tools even closer.

**Find your nearest branch by visiting the website at: [www.crowndecoratorcentre.co.uk](http://www.crowndecoratorcentre.co.uk) and follow us on Facebook and Twitter to find out if there's a new store opening near you this year.**



**CROWN**  
DECORATING CENTRES

# Combating

Glass microspheres technology incorporated in Suretherm produce an alternative to conventional anti-condensation coatings.

# condensation

**S**uretherm Anti-Condensation Paint is a water based internal emulsion which will significantly reduce condensation and mould by utilising Glass Microsphere Technology. Suretherm paint does not contain any harmful biocides.

Walls painted with Suretherm feel warmer to the touch as the heat from your hand is being reflected back instead of being drawn to the colder surface of the wall and escaping.

When incorporated into a paint film, the glass microspheres act as miniature Thermos-like bottles, providing a thermal barrier between cold surfaces and the warmer ambient temperature within a living space. As the air is insulated against the

colder wall surface, condensation and mould growth is drastically reduced.

Another benefit of Suretherm paint is that it can be overpainted. Anti mould paints and anti- condensation paints that are hygroscopic (meaning they attract moisture from the air) cannot be overpainted. This is because the active film will be covered over if you apply a coating over the top. Suretherm can be overpainted or wallpapered which will not affect the performance

The paint can be used in various applications where condensation can create problems where moisture forms and mould grows.

The main uses for Suretherm are:

- Bathrooms and wet rooms

- Kitchens
- Areas where mould grows (mould must be cleaned off before applying)
- Cold walls and ceilings
- Areas of missing insulation
- Industrial applications including shipping containers
- Prefabricated structures including internal surfaces (cladding etc.)

It can be used on most surfaces such as painted/wallpapered walls and ceilings, new and old plaster work, brickwork, concrete, galvanised steel and most painted plastics. It should be noted that to ensure compatibility on metal and plastic, a small test patch should be trialled before commencing full application.

## CASE STUDIES



### Bolton at Home Housing Association

This property was suffering from condensation and mould growth, particularly at the wall to ceiling junction shown. The area was poorly insulated which creates "cold spots" which caused condensation to form and mould to grow. Suretherm was applied on 2/12/2015 and was inspected over 3 months later on 14/3/2016. The results show that mould had not grown back on areas treated with Suretherm.



### New Charter Housing Association

This house was suffering from major condensation and mould issues throughout the whole property. The tenant regularly wiped mould from the surface but it kept coming back. The area was poorly insulated which created "cold spots" which caused condensation to form and mould to grow. Suretherm was applied 1/2/2016 and was inspected 10 weeks later on 12/4/2016. The results overwhelmingly prove that Suretherm really works.





# Decorating solutions

from Axus Decor

## Razor-25 Tape



The newest masking tape from Axus Décor is the Razor-25, a low-tack tape perfect for both interior and exterior jobs thanks to its excellent adhesive that stands up to UV light. You'll have peace of mind knowing that you will be able to leave it on surfaces for up to 25 days without it leaving a residue on removal. The adhesive is also formulated to lift off without pulling off recently applied paint or damaging wallpaper, leaving behind nothing but super sharp lines for an impressively clean finish. Razor-25 is incredibly versatile, and perfect for protecting painted walls, wallpaper, carpets, glass, skirting, outdoor areas and more. Available in 24mm, 36mm and 48mm widths.

For stockist information and the latest news, follow on Facebook, tweet @AxusDecor or call 020 8204 1422.

**LEWSAN**

**BUY  
NOW  
ONLINE**

The solution for stairwell access!

safe, simple & smart  
put it in your online cart

## STAIRMATE

A unique device enabling the professional decorator to access walls and ceilings above stairs and steps using any conventional ladder.

Tel **01708 473842**  
[www.stairmate.com](http://www.stairmate.com)



The premier trade and employers' association for the painting & decorating industry in the United Kingdom

## Join us to get these benefits

### Support and Growth

- Legal Support
- Mediation & Arbitration
- Employment
- Tax Support
- Product Information
- Training
- Technical Advice

### Market Profile

- Free Profile on Website
- Certification of Quality
- Competitions
- Representation
- A Voice for the Industry

### Knowledge and Skills

- Legal Assistance
- Industry Standard Templates
- Insurance
- Tax Advice
- Health & Safety and Risk Assessments
- Employment Support
- Helplines
- Apprentices and Training
- Mediation and Arbitration
- Free Member Magazine

Get in touch

[paintingdecoratingassociation.co.uk](http://paintingdecoratingassociation.co.uk)

[info@paintingdecoratingassociation.co.uk](mailto:info@paintingdecoratingassociation.co.uk)

024 7635 3776

# Why wait?

THE AWARD WINNING FORMULA  
THAT WORKS!



**PAINT  
PANTHER**

**The Award Winning  
Paint & Varnish Remover**

Tears through multiple layers of  
paint & varnish **incredibly fast!**

REMOVES METALISED PAINT

**SUPER FAST** ✓

EASY TO APPLY ✓  
NON-DRIP GEL FORMULA ✓  
REMOVES METALISED PAINTS ✓

AVAILABLE SIZES ✓  
4L, 2.5L, 1L, 500ml, 250ml



**'The brand you can trust'**

**Barrettine**  
TRUSTED BY THE PROFESSIONALS

St. Ivel Way, Warmley, Bristol BS30 8TY.  
T. 0117 960 0060 F. 0117 935 2437  
E. sales@barrettine.co.uk [www.barrettine.co.uk](http://www.barrettine.co.uk)  
Gold winner of the DIY Week Decorating Product of the Year 2011.

## Brewers *brief*

# Masonry for the Great British Weather

The summer brings warmer weather perfect for getting outside to do those masonry jobs, however we all know that the great British summer also features the odd shower or two! At Brewers, there are loads of options to choose from including shower resistance in 30 minutes, so you don't need to lose out over a grey sky. What's more, many of the popular masonry paints are currently on special offer— see your local Brewers Decorator Centre for details.

## Paints

Whether you need a smooth masonry finish, a coating that can withstand low temperatures and adverse weather or a product offering superior fungal protection, Brewers has you covered. From brands such as Dulux Weathershield, Zinsser All Weather, Bedec Extra-Flex, Albany and Sandtex, there is just the paint for every job.

## Colours

Colour choice will be one of the biggest decisions for your clients – particularly when it's on the outside of their building! Whether they prefer traditional shades, pastels or a more modern approach, there is now a much wider selection to choose from including BS, RAL and NCS colours.

To see what's on offer or to find out more information visit your local Brewers Decorator Centre. To find your local store, go to [brewers.co.uk/stores](http://brewers.co.uk/stores)



# THE LITTLE ONE-HAND SANDERS

with speed control and PES filter cartridge in set



**SMALL SURFACES AND EDGES**

## DELTA SANDER

### ODE 100-2 set

- 200 watt
- 8000-13000 rpm
- 16000-26000 opm
- Orbit 2 mm
- Only 1.2 kg
- Including sanding paper 1 x P 80 and 1 x P 120
- External dust extraction Ø 27 mm



**CORNERS AND EDGES**

## PALM SANDER

### OSE 80-2 set

- 8000-13000 rpm
- 16000-26000 opm
- 200 watt
- Orbit 2 mm
- Only 1.2 kg
- Including sanding paper 1 x P 80 and 1 x P 120
- External dust extraction Ø 27 mm



**ROUND SHAPES**

## RANDOM-ORBIT SANDER

### ORE 150-5 set

- 350 watt
- 5800-10000 rpm
- 11600-20000 opm
- Orbit 5 mm
- 2.1 kg
- Including sanding paper 1 x P 80 and 1 x P 120
- External dust extraction Ø 27 mm



## SAFETY VACUUM CLEANER

### VCE 26 L MC

- 1250 watt
- 3600 lpm
- 21000 Pa
- Container Volume 25 l / Wet vacuuming 16 l
- 8.4 kg

### VCE 33 M AC

- 1400 watt
- 4500 lpm
- 25000 Pa
- Container Volume 30 l / Wet vacuuming 17 l
- 15.2 kg



## GIRAFFE®

### GE 5

- 500 watt
- 1100-1650 rpm
- Ø 225 mm
- Length 1520 mm
- 3.9 kg

For more information please contact

Stuart Colclough

P0 Box 192, Darlington DL1 9FN  
Phone +44 (0) 1 325 741793  
Fax +44 (0) 1 915 045133  
Mobile +44 (0) 77 909 90682  
uk.sales@flex-tools.com

**FLEX**  
Das Original

# Insurance is on the up – *but you still need it*



Phil Cowell of IFM Select leads you through insurance options.

In its third increase in just two years, Insurance Premium Tax (IPT) has hit 12% at the start of June, a growing burden since the tax was introduced in 1994 at just 2.5%.

At a time of uncertainty following the Brexit referendum, this increase which has been added to premiums will undoubtedly put further pressure on UK businesses and sole traders.

“Businesses and sole traders already struggling to keep on top of their finances could be tempted to avoid paying the higher premium by reducing their cover. However, there are a number of options which may help counteract the premium increase without compromising the cover provided within the policy.”

## **Always ask alternatives**

Many businesses remain loyal to the same provider for years; this can prove costly for those with insurers that may just hope their clients are too busy to assess what's on offer and accept the first renewal offer.

It's important to regularly challenge your provider. Although, obtaining alternative quotes each year can be time-

consuming and may cause some holding insurers to refuse to provide a quote, if they suspect they're being used to beat down premiums.

The best insurance brokers will market their client's business every few years to confirm the lowest possible premium is achieved, whilst delivering the cover needed.

## **Eligible for a rebate?**

Paying a significant premium each year might mean you're eligible for a rebate when agreeing a policy renewal, depending on your insurer and providing your claims are below an agreed level.

The rebates may be anything between 5%-15% of your annual premium and a good broker will be able to advise on all options available.

## **Consider a larger excess**

For businesses with a history of making small or no claims, accepting a higher excess could help attract a sizeable premium discount to cover the IPT increase.

## **Has your risk changed?**

Over time, you are likely to make improvements to your business and its processes which could reduce the risks

of making a claim. To make sure you retain the right cover, promptly notify your insurer of any changes and they will also check to see if your premium can be reduced.

You may still be paying for cover on aspects of your business which is no longer required; perhaps you've introduced new health & safety procedures or have stock delivered to site instead of holding high stock levels held at your premises. Clarify the inclusions of your policy with your broker to ensure you're only paying for what you need.

## **Act fast**

There's no escaping IPT increase, but you could help to reduce your premium by as much as the increase, or more, by assessing all options available. Just make sure if you are cutting the cost of your policy, you're not cutting the level of cover you need as a result.

About the author: Phil Cowell is a respected Chartered Insurance Broker and Director of IFM Select a privately-owned insurance brokerage, offering individually tailored business and personal insurance.



The Wagner logo is located in the top left corner. It features a stylized black triangle above the word "WAGNER" in a bold, black, sans-serif font. The entire logo is set against a solid yellow rectangular background.

**WAGNER**

# WE JOIN FORCES.

HeavyCoat 750:  
Next Generation Airless

HydraStroke  
TECHNOLOGY™



# On test:

## Random Orbital Sanders

Why Random Orbital Sanders you ask? There are more pros than cons. One con, they cost usually twice as much as a sheet sander and they can't get into corners owing to the round sanding disk.

Pros though, there are a few: They leave a less distinct and visible scratch pattern than a sheet sander.

They can remove more material than a sheet sander so you can complete the job quicker using the same number grit paper.

The sanding disks on a random orbital sander are easier to change than the clippable and fiddly paper sheet. Although you can use ordinary sandpaper on a sheet sander which is cheaper than the hook and loop random sanding disks.

We asked some suppliers to send along their sanders and this is what we found.

### Draper 83639

|             |                      |
|-------------|----------------------|
| Guide Price | £36.98 (Toolstation) |
| Sheet Size  | 125mm                |
| Wattage     | 230                  |
| No Load OPM | 12,000               |
| Weight      | 1.4kgs               |
| Contact     | 02380 494333         |

Handy compact palm sander comes with a dust box and a connector for the workshop vacuum to take away the dust. You'll also find in the cardboard box in which its supplied three P80 hook and loop disks. The top of the sander is covered in a rubber like material for a good grip. You get three metres of electric cord so you have good ease of movement.



### Screwfix Erbauer 96759

|             |                   |
|-------------|-------------------|
| Guide Price | £99.99 (Screwfix) |
| Sheet Size  | 150mm             |
| Wattage     | 450               |
| No Load OPM | 5000 -12,000      |
| Weight      | 2.3Kgs            |

An impressively big chunky Random Orbital Sander with back and adjustable front handles and supplied with a fabric valise. On the front of the top handle is a speed adjusting wheel giving the operator a choice between 5000 and 12000 oscillations a minute. In the valise you'll find six 150mm hook and loop disks two of each, P60, P80 and P180 grit as well as two cloth dust catchers. Attached is three metres of cable and of course a three pin plug.



### Clarke International CROS3

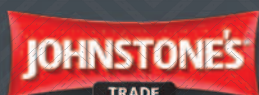
|             |                 |
|-------------|-----------------|
| Guide Price | £42.99 (Amazon) |
| Sheet Size  | 125mm           |
| Wattage     | 450             |
| No Load OPM | 7000 - 14,000   |
| Weight      | 2.6kgs          |

A chunky sander with rubber covered back handle and an adjustable front handle. Supplied in a cardboard box with five sanding disks, 2X P60, 2XP100 and a single P150, there's also a spare set of armature brushes and two metres of cable. To catch the dust there's a dust bag that sits awkwardly on the side of the sander and not the normal place out the rear. Speed control is on the trigger, a small wheel gives you a choice of 7000 - 14000 oscillations per minute (OPM).





# Win WITH COLOUR



PAINT TO BE PROUD OF



VOICE OF COLOUR®



## GUARANTEED WINNER EVERY 15 MINUTES!\*\*



**BUY**

any Johnstone's  
Trade paint



**ENTER**

your unique code at  
[www.winwithcolour.com](http://www.winwithcolour.com)



**WIN**

Find out instantly  
if you're a winner!

**FIND YOUR NEAREST PARTICIPATING STORE**  
**[WWW.WINWITHCOLOUR.COM/STORELOCATOR](http://WWW.WINWITHCOLOUR.COM/STORELOCATOR)**

\*T&Cs apply: Promotion period is from 7am to 7pm everyday between 11.06.2018 and 15.07.2018. For residents of Northern Ireland and Republic of Ireland, no purchase necessary and full details on how to enter are on the T&Cs. \*\*One prize is available to be won every 15 minutes during the promotion period. Full T&Cs and prize details can be found at [winwithcolour.com/termsandconditions](http://winwithcolour.com/termsandconditions)



### Makita BO6030

|             |                                    |
|-------------|------------------------------------|
| Guide Price | £118.00<br>(www.justoffbase.co.uk) |
| Sheet Size  | 150mm                              |
| Wattage     | 310                                |
| No Load OPM | 8000 - 12,000                      |
| Weight      | 2.4Kgs                             |

Normally I expect a Makita product to arrive in a plastic case but this sander is supplied in a cardboard box, which said it is of the normal excellent high Makita quality. Attached are four metres of cable but unlike most of the others in this line up Makita supply you with just the one P120 sanding disk. Speed control is by a small wheel set in the main case just in front of the rear handle giving the operator a choice of 8,000 – 12,000 OPM.



### Makita DBO180

|             |                                |
|-------------|--------------------------------|
| Guide Price | £438.00 RRP<br>but shop around |
| Sheet Size  | 150mm                          |
| Voltage     | 18                             |
| Wattage     | 190                            |
| No Load OPM | 7000 - 9500 - 11000            |
| Weight      | 1.7Kgs                         |

Unique in being the only cordless sander in this line up. Normal Makita quality and this sander come in a stackable plastic case. They can be clipped together making it easy to empty the van at night so you can wheel them into the house. In the case you'll find two battery packs, a charger, dust bag and single p120 grit sanding disk. Don't be too put off by the high price, that's the RRP and if you shop around you should be able to get it for a smidgen under £200.



# pre<sup>m</sup>fill&finish

**THE PERFECT FINISH  
SUITABLE FOR ANY TYPE OF DECORATION**

Formulated for plasterboard jointing,  
surface smoothing, repair and  
snagging work

Boasts a working time of 60 minutes

Adheres to painted surfaces



Special prices now available, please contact Wondertex:

## 01827 254402

**wondertex.co.uk**



# STAIN

REPELLENT TECHNOLOGY  
IN A WIDE RANGE OF COLOURS



DURABLE DIAMOND WITHSTANDS  
SCRUBS, SCUFFS AND STAINS



ENSURES SPILLS  
JUST WIPE AWAY





# On test:



## Renault Kangoo Van ML19 dCi 110 Auto Formula Edition

by David Stokes

**R**enault's Kangoo Van arrived in a fetching shade of Pearlescent black, the grill, spot light surrounds and there's an orange flash along the van's side. It was clear from the go that this van had most of the extras fitted to whet the appetite of any motoring journalist but at a cost that most bosses would balk at, unless it was their own van!

Fitted to the test van was an interior side door panel, £80.00, the bulkhead hinged so long items can be loaded over the flattened passenger seat, £225.00. Other extras included an offside sliding door, £230, sliding rear roof flap, £220, automatic headlight and wiper system, £210. An R-Link multimedia system, including a 7-inch touch screen, TomTomLive navigation, FM/AM/DAB tuner and CD player, 2 X 20W speakers. Also Bluetooth audio and hands free calls, USB and AUX sockets and Voice control plus TomTom western Europe map.

All that adds up to £1640, not many bosses

would run to that but to save wear and tear on the engine and transmission perhaps an auto box is a good idea. Performance is good albeit not sparkling, I found however the van is able to lift up its skirts well and its easy to be the first away from the lights. The autobox makes city driving a pleasure, well as much of a pleasure it can be, that said it makes light work in start and stop traffic. The 6 speed autobox make life very easy indeed, gear changes are almost imperceptibly smooth.

With the short bonnet and large windscreen the driver gets an excellent view and in no time they get to know the van's outside dimensions for parking. The rear parking sensors are always a good idea and will pay for themselves time and time again. This also goes for the ability to operate one's mobile hands free, its easy to be tempted to take a call if one is expected especially if a long awaited job is hoped for. The door windows are powered, the driver's side



being one touch but the passenger's you have to keep the finger pressed down on the button.

I can't say I'm fond of the 'L' shaped handbrake lever, I find it gimmicky and awkward. What is most useful is the sliding rear roof flap, this is where the whole of the width of the roof at the rear of the cargo space lifts up and slides forward to allow long objects like a ladder to be temporarily carried. Not good if there is rain about because the opening will cause the interior to get wet, including the driver if the wetness is carried forward.

The extra side sliding door would make life easy for loading and unloading unless you



# MUREX®

## FILL AND REPAIR EXTERIOR FILLER



**“QUALITY WHETHER  
YOU WANT IT OR NOT”**

- ▶ FILL AND REPAIR
- ▶ EXCEPTIONAL ADHERENCE
- ▶ WILL NOT FLASH OR GRIN
- ▶ PAINT WITHIN 24 HOURS
- ▶ WHITE

Unit 58, Capital Business Centre, 22 Carlton Road, Surrey, CR2 0BS  
☎ +44 (0)203 691 6747 ✉ [toupretuk@toupret.com](mailto:toupretuk@toupret.com)



**TOUPRET®**  
THE PROFESSIONALS' PREFERRED FILLER

**WWW.TOUPRET.CO.UK**



wanted to put racking on one side and the door opening behind would make life a trifle difficult. The rear loading doors are of asymmetrical width making one handed opening and loading possible though a wider door. The doors incidentally have no glass so what's inside is out of sight for the lighter fingered. To hold down any load there are six anchorage points to keep anything sliding about.

All in all an excellent small van that one would not find a chore on long journeys, the 55 mpg is a selling point but the swingeing £240.00 a year is a bit of a hit.

## Basic 'On the Road'

**Price** £20,145

**As Tested** £21,875

**VED** £240.00

**Insurance Rating** 32

### Specification:

Engine Type Diesel

Capacity 1461cc

BHP 110 @ 4,000rpm

Torque 250 lb ft @ 1,750rpm

Gearbox Transmission  
6 speed auto

### Performance

Top Speed 105mph

Fuel Consumption  
Combined 55.4mpg

Steering Power assisted

### Dimensions:

Overall Length 4282mm

Overall Width  
2138mm With Mirrors

Height 1805mm

Wheelbase 2697mm

Load space length 1476mm

Load Space Width  
1218mm Between Wheel Arches

Internal height 1251mm

Payload 650Kgs



the varnish experts

# a great new start to a perfect finish



check out  
our range  
of finishes



**POLYVINE**

find us in store or online at [polyvine.com](http://polyvine.com)



## Liberon launches home Colourcare Range

Liberon has launched its Home ColourCare range - a collection that combines traditional woodcare properties with a choice of contemporary colours.

Comprising a durable Floor Varnish, multi-surface Furniture Varnish and a Decorative Furniture Wax, the Home ColourCare range offers the same level of protection and nourishment as Liberon's neutrally coloured wax and varnish products. Available in a selection of bright shades, as well as contemporary metallic and pearlescent finishes, this cutting-edge range provides a two-in-one approach to protection and colour.



Requiring minimal surface preparation, the range can be used across most bare and treated wood surfaces alike, making it an obvious choice for professional tradespeople, as well as an accessible woodcare option for novice users. With RRP's ranging from £10.73 for 500ml of Decorative Furniture Wax to £38.60 for a 2.5L can of Decorative Floor Varnish.

## Mirka's new flexible LEROS

Mirka UK has launched its lightest and most advanced wall and ceiling sander in April. This brushless sander features innovative solutions, including a sanding head with 180° flexibility and a 5 mm random orbital movement, making it extremely user friendly.

The flexible and practical design gives unmatched advantages, such as ergonomic working positions and less strain on the operator's body and back. At less than 3.5 kg, the operator can sand for longer periods without fatigue.

With Mirka® LEROS, the operator can work very close to corners thanks to the sanding head and backing pad design. Due to the random orbital movement, Mirka® LEROS responds precisely to the operator's movements making the sanding process easy. In addition, it also



creates a smoother better finish. Maintenance of the tool is also minimised as there are no carbon brushes to be changed. When combined with the Mirka's dust-free net abrasives and suitable dust extraction, the Mirka® LEROS provides dust-free sanding, making the working environment cleaner and healthier.

**bromboroughpaints**  
Wallcovering & Paint Specialists. Est. 1948

## Now open in Stoke!

- All major brands available
- Colour mixing service
- Extensive selection of wallcoverings
- Wide range of decorating tools & materials
- Competitive prices
- Friendly, expert advice

**For more information call: 0151 334 1237**  
or visit [www.bromboroughpaints.co.uk](http://www.bromboroughpaints.co.uk)



Carlisle

Kendal

Lancaster

Preston

Padiham

Wigan

Trafford Park

Birkenhead

Liverpool

Cheadle Hulme

Frodsham (retail only)

Abergele

Bromborough

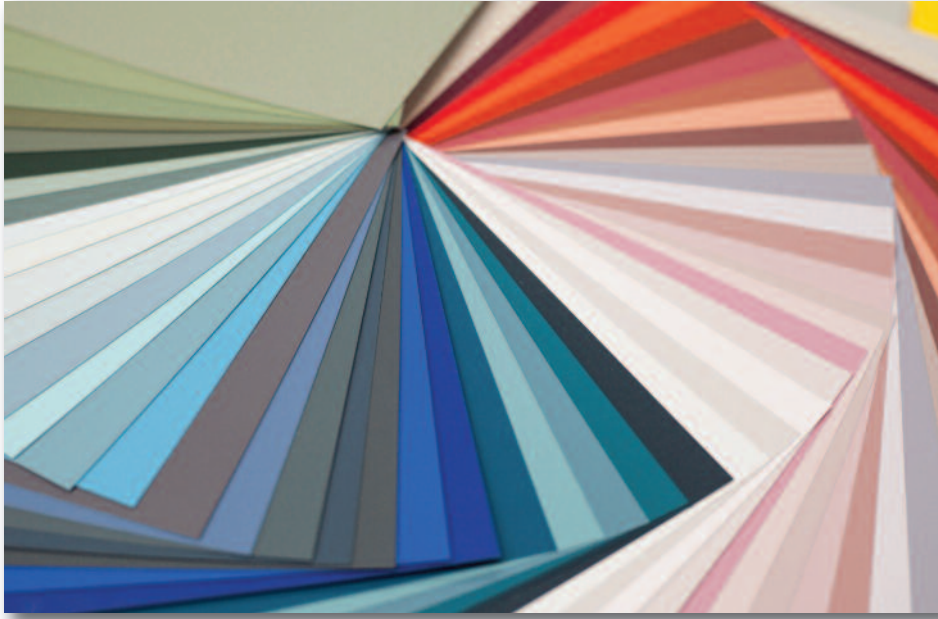
Chester

Northwich

Shrewsbury

Stoke

**...we've got the North West covered!**



## Scandinavian inspiration

Fenwick & Tilbrook paints are inspired by Scandinavian exterior paints that were originally designed 40 years ago to withstand the worst of Arctic weather. The ingredients used for their manufacture have been accurately matched to the Scandinavian originals, which has created a range of paints with an exceptional lifespan.

Made from quality ingredients, Fenwick & Tilbrook paints are rich in pigment giving them depth of colour. While they are highly durable, the paints are water-based with low VOC content, making them suitable for use throughout the home.

The company is also launching a new concept – an ‘inspiration box’ containing business card sized actual paint samples of each of the 120 colours available, which makes it easier to choose and match colours and get inspiration for decoration.

Every order is manufactured individually. A small sample is taken from each tin, checked for colour and then recorded against the customer’s details. Individual customer service is very much at the core of the business.

## Snickers’ Allround Tool Vest



Versatile and adjustable, the ergonomic design features a wide range of hard-wearing pockets for a variety of tools fixings and accessories. It’s lightweight, hard-wearing, comfortable and easy to keep clean. The Tool Vest’s ergonomic comfort also looks after your back by providing for comfortable heavy tool carrying through the specially designed wide shoulders, elasticated back and an integral waist belt to take pressure off your shoulders.

It comes with Cordura® 500 reinforced front holster pockets for enhanced durability and easy-access angled rear holster pockets. There’s also Cordura® reinforced breast pockets plus a knife fastener, an easy-access padded mobile phone compartment and detachable ID badge.

## Wood style tiles

Gemini Tiles has created a variety of wood-effect collections that recreate the beauty of natural wood and combine the importance of a realistic finish with the practical benefits of ceramic or porcelain tiles.

Complete with the distinctive knots and markings of organic wood, each tile is slightly different to ensure an authentic look. The tiles for each collection are supplied in a similar style to classic wooden flooring planks and as such can be creatively arranged to achieve on-trend herringbone or chevron patterns across the floor.



## U-POL fillers

U-Pol – the UK market leader in automotive body shop coatings and fillers – has brought its experience in surface finishing to the professional tradesperson with the introduction of three high performance construction fillers. Surface perfection is a must in automotive body shop repairs, and U-POL’s expertise in meeting the requirements of that sector mean its new building range delivers the same quality, ease of use and high performance.

U-Pol’s TOUGHfill™, FASTfill™ and EASYfill™ collectively offer a range of fillers for all requirements and applications – from load bearing to light decorating tasks. They are all so-called ‘2K’ two-component products. 2K fillers are superior in all ways to standard one-part ready-mixed products predominant in the industry. They combine the durability and toughness only associated with two-part technology with easy sanding to give a superior, professional finish which can be ready for painting in as little as 20 minutes.





## Sadolin Shed & Fence All Weather Barrier

Sadolin's new Shed & Fence All Weather Barrier woodstain is available in five and ten litre pack sizes. It features a wax enriched water repellent, as well as UV protection, to ensure long-lasting colour from the shades available, Grey Shadow, Woodland Walk, Sylvan Grade, Cedar Red and Ebony Wood. Showerproof in thirty minutes – it enables outdoor decorating to be scheduled in even when there is a slight threat of rain.



## Tight clamping

BESSEY has introduced GearKlamp GK: the clamp that masters clamping applications – even in the tightest spaces. This is made possible by a mechanism that allows the separation of the spindle from the handle and to position it around the rail. For example, the compact BESSEY GearKlamp GK can be used even in places that were previously difficult or impossible for clamping tools to access.



## Woodex Aqua Solid stain from TeknosPro

TeknosPro's Woodex Aqua Solid exterior opaque wood stain is for use on all doors, window casements and furniture indoors and outdoors. The waterborne acrylate/alkyd based coating offers a durable, gloss finish and has been developed for the professional by TeknosPro, the expert in high quality paints and coatings.

This smart, sustainable stain has VOC levels, can be applied by brush, roller or spray and has a spreading rate of 8-10m³/l. Package sizes are 0.9, 2.7, 9 litres.



# The Paint Shed

## The trusted choice for trade

Price Guarantee | Free Delivery

All of your favourite brands  
under one roof

CROWN

Dulux

Macpherson  
TRADE PAINTS

JOHNSTONE'S

JOTUN  
DEMI  
DEKK

Leyland  
Trade

Save on your next job at [www.thepaintshed.com](http://www.thepaintshed.com)



## New from HMG

HMG Paints has launched a specialist range of decorative coatings, including a new Colour Collection.

Called Essentials, the durable water-based coatings have been developed over a number of years and have undergone extensive trials and testing. The range has been specified on large scale projects, such as the renovation of Manchester Central Library, and Heritage projects such as Grade II listed buildings.

Suitable for all normal interior wall and ceiling surfaces, Vinyl Matt and Silk Emulsion formulations offer a coverage rate of up to 15m<sup>2</sup>/l. Vinyl Matt Emulsion is a premium quality, quick drying and perfect for when a flat non-reflective finish is required along with easy application. Vinyl Silk Emulsion is suited for where a washable high sheen finish is required. For new work application the company has developed Trade Emulsion, a decorative matt emulsion, that has excellent opacity which improves as the paint dries. Excellent results can be achieved with a single coat. Designed for easy application on interior plaster, walls and ceilings. Acrylic Eggshell offers a mid-sheen finish that provides a durable, washable finish, resistant to condensation and is suitable for most surfaces including walls and interior woodwork. There are also trim paints and primers in the range.

## Long life paint brush cover



Almost all new paint brushes have a protective paper covering which ensures the bristles stay straight at the point of sale. These paper cases quickly wear out and before long the brush is left with no protection during storage and transportation. New to the UK, from the USA, is the Brush Shield cover. It's a form fitting lightweight polypropylene sheath to wrap around your paint brush while you are not using it, or while you are transporting it between projects. This material is resistant to most cleaning chemicals, paints and stains. Available in the UK from [topdecbrush.co.uk](http://topdecbrush.co.uk), the brush shield comes in 3 sizes, 2", 2.5" and a 3".

## Crown Trade Fastflow System now in full colour

Following on from the introduction of limited tinted colour options for Fastflow Quick Dry Gloss, additional colours are now available across the full range, which also includes Fastflow Quick Dry Satin and Fastflow Quick Dry Primer Undercoat.

Combining the performance characteristics of an oil-based system with all the benefits of water-based technology, Crown's Fastflow range offers a solution for contracts where a quick turnaround and high quality finish is required. Suitable for both indoor and outdoor use, the Fastflow system's quick-dry formulation can help reduce time and labour on site by enabling two coats to be applied in one day.



## New tips from Graco

Building on the success of the 2017 Fine Finish Low Pressure (FF LP) tip and its significant low pressure benefits, Graco is expanding this with new tips for large surface and high-production applications: RAC X™ LP SwitchTips™.

The Low Pressure (RAC X LP) tips spray large projects at up to 50% lower pressure than standard tips, doubling the life of the tips and allowing for less overspray, reduced prep and clean-up time, and easier pattern overlap.





## Bosch Professional 18 V drill driver with FlexiClick

Bosch has equipped its latest 18 V cordless drill driver with the FlexiClick attachment system to create a do-it-all tool. Using a range of adapters, the Bosch GSR 18 V-60 FCC Professional Drill Driver with FlexiClick can be turned into anything from a screwdriver to a powerful rotary hammer drill. The same system provides great flexibility for work in various difficult situations, including hard-to-reach places. To these advantages, Bosch has also added connectivity and electronic protection. The main FlexiClick adapters are:

1. GFA 18-M Professional Drill Chuck Adapter. A highly robust attachment, with a solid metal construction, holding drill bits of up to 13 mm diameter.
2. GFA 18-W Professional Angle Screw Adapter with HEX socket. Allowing easy and precise screwdriving even in very



- tight spaces, it effectively drives screws around corners.
3. GFA 18-E Professional Off-set Angle Screw Adapter. Enabling precise screwdriving close to edges.
  4. GFA 18-H Professional Rotary Hammer Adapter. With this attachment the drill

driver

becomes a high-powered SDS-plus rotary hammer with an impact energy of 1 J.

Also available are the GFA 18-B Professional Drill Chuck Adapter, with a plastic construction for lighter tasks, and the GFA 18-WB Professional Angle Screw Adapter, for round-shank drill bits.

Professional Performance Paints – a wide range of specialist paints including Magnet, Sketch, Projection & Blackboard.

PAINT  
FOR  
PROS

Power to the  
professional.

Developed by Specialists & Professional  
Painters – Products to Trust.

TO MAKE AN ENQUIRY PLEASE CONTACT US TODAY



T: 01282 505988 E: sales@magnamuros.com  
www.magnamuros.com



reddot award 2016  
winner



## Improve ladder safety

Ladders remain the major cause of accidents worldwide involving falls from height. Around 40% of fatal falls over the last decade in the UK have involved a ladder, the key reason being that ladders are prone to slipping. Ladder Grips is a new ladder safety device that is said to improve ladder stability by up to 350%.

Says the company, "Most ladder safety devices aim to secure the ladder's feet. Ladder Grips fix the top of the ladder because if the top is made immobile, the feet are unlikely to move either, thus securing the ladder and making it far safer to use".

The product features powder coated steel & non-ferrous fittings and is provided with a non marking surface. Weighing just 1.90kg the Ladder Grip is designed to fit in a standard toolbox and can be fitted to a ladder in less than a minute.

The product is designed to be used against virtually any surface.

## Ice Fusion's smooth finish

ProDec has launched its new Ice Fusion roller, with the promise of the smoothest finish ever from a roller with no pile shed, backed by a money back guarantee for anyone who's not happy. The secret to Ice Fusion is Fused Fibre Technology, a process that uses an advanced blend of polymers to make the fibres semi-elastic, giving ultra-smooth contact and release with the surface for a finish that some users have said is the nearest to a spray finish they've ever seen from a roller. Fused Fibre Technology also interweaves the fibres together during manufacture, increasing their strength and making the pile shed-free so the roller can be put straight into paint with no pre-washing.



Ice Fusion is available in a 12mm medium pile in 4" mini twin pack, 9" and 12" sizes and can be used in a wide range of paints and varnishes including emulsion, eggshell, wood stains and clearcoats. It also features a snap-close airtight foil bag, which means you can store wet rollers overnight or longer ready for the next use.

## Coo-Var's Latest Anti-Slip Floor Paint

Anti-Slip Acrylic Floor paint is a new addition to the Coo-Var floor paint range. Providing a water based durable hard wearing anti-slip surface, for use on walkways, in warehouses, Features of our Anti Slip Acrylic Paint include:

- Hard & Durable Matt Finish
- Fast Drying & Low Odour
- Water Based
- Low Slip Risk in Wet & Dry Conditions (tested to BS7976-2)
- Can be used on walkways, playgrounds, warehouse, garages & driveways
- Available in 7 colours & sizes 2.5L & 5L



## Concrete repair products

FibreGrid has launched a new range of concrete repair products for repairing concrete surfaces before finishing with anti slip paints, tapes and GRP products.

The three products are Rapid Set Epoxy Concrete Floor Repair Mortar ; Rapid Set Epoxy Concrete Floor Repair Mortar - Cold Cure (can be applied in cold environments as low as 3 degrees); and Step Edge Repair Mortar.

All these products have good adhesion to concrete, stone, asphalt and metal, so offering a wide range of applications. They are resistant to a wide range of chemicals, and are tolerant to road salts and freeze-thaw.





No paint bleed



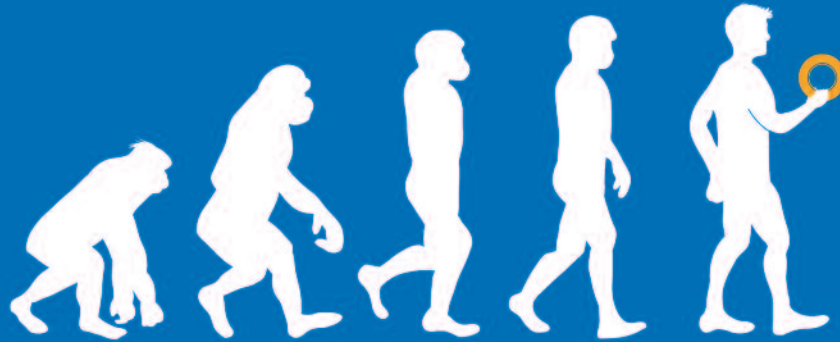
Clean removable up to 6 months



Indoor and outdoor use



Saves time and money



# NEVER MISS AN EVOLUTION.

**FREE TRIAL PACKAGE!**

[Deltectape.com/gold-sample](http://Deltectape.com/gold-sample)

CRÊPE TAPE **VS** DELTEC GOLD



**DELTECTAPE**

A PRO KNOWS



[www.deltectape.com](http://www.deltectape.com) | +31 (0)413 - 24 44 82 | [info@deltectape.com](mailto:info@deltectape.com)

# ***"The closest thing I've seen to a spray finish from a roller"***

Decorating forum user

**ProDec**  
**ADVANCE**



- ✓ **Lint free ultra-smooth finish**
- ✓ **Snap close airtight storage bag**
- ✓ **4", 9" and 12" sizes**



**PERFORMANCE  
GUARANTEED**

**OR YOUR MONEY BACK\***

\*see [prodec.uk.com](http://prodec.uk.com) for details