

The Professional Painter & Decorator

AKZONODEL

FLOOR TO CEILING PROTECTION



Protect against scuffs, stains and scrubs
with Dulux Trade Diamond range.





kana TANK

Holds

30%
more paint

ROTA!

kana

masq

prep

**Come see this brush in action on Stand 96 at the
National Painting & Decorating Show!**

- Innovative 2 in 1 combination of natural bristle tank with a synthetic bristle coat
- High quality swell resistant ferrule
- Ideal for use with woodstains and varnishes

Natural bristle
paint tank

Plastic ferrule

Synthetic
bristle coat

Ergonomic
beech handle

Available in: 1" (30mm), 2" (50mm) & 3"

Visit www.ciret.co.uk to see this brush in action!
+44 (0)2392 457450

The Professional Painter & Decorator

INCORPORATING THE PAINTING & DECORATING JOURNAL

News	2
Pitch Pine	10
This wood creates a great graining exercise, as Cait demonstrates.	
Access: when is a certification required and why	12
It's important to know all the factors of scaffolding and whether you require training.	
Glowing in the dark or not	16
Fluorescent and luminous paints can a significant aid to site safety, enabling areas of concern or hazardous objects to be clearly identified. But confusion does exist around the roles and functions of fluorescent and luminous paints.	
Dulux Trade launches Diamond Satinwood	20
Dulux Trade has launched Diamond Satinwood, a new water-based formulation which promises excellent flow for a high quality finish and professional results.	
Paint sorted in just a few clicks	22
Naiem Wafa of Crown Decorating Centres explains how online purchasing can provide an additional benefit to decorators especially when stocking up for those last minute projects where time is of the essence.	
Mirka's new training centre	24
Mirka UK has opened a new state of the art training centre in Milton Keynes.	
The National Painting & Decorating Show	30
A preview and your FREE ticket.	
One Can means one can	34
Just how multi-purpose is multi-purpose? Bradite's new product redefines this.	
Trompe l'oeil	36
Hand painting stripes on furniture. By Lynda Bergman.	
Crown Paints Apprentice Decorator	40
Behind the scenes with a former winner.	
On test: cordless impact driver	42
On test: Vauxhall Vivaro biturbo stop/start	46
Stainaway: Johnstone's All-In-One Paint with stain-blocking	50
StainAway contains Stain Blocking Technology which permanently isolates and covers stains. Cross-linking polymer compounds in the paint layer ensure complete coverage and prevent future penetration through the paint layer.	
Marketplace	52



**The National
Painting & Decorating Show**
Nov 27th - Nov 28th 2018

Editorial David Pescod
Advertising Richard Daynes

Published by
DPA Publishing Ltd
Stoney Lane Barn
Stoney Lane
Bovingdon
Herts HP3 0LY

Editorial: 01303 238002
Email: davidpescod@aol.com

Advertising & Subscriptions: 01442 832715

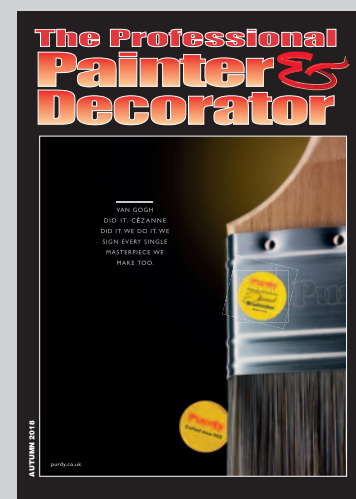
Production The Orange Design Group

Printed by Wyndeham, Roche
Subscription £18.00 p.a. (in the UK)

Subscribe to the

The Professional Painter & Decorator

**only
£18 per year**
(including postage)



**It's the only way of ensuring
you receive your copy**

Published 4 times per year -
February, May, August & November

Make cheques payable to
DPA Publishing Ltd
Orders can only be accepted with payment

Send to:
DPA Publishing Ltd
Stoney Lane Barn, Stoney Lane,
Bovingdon, Hertfordshire HP3 0LY

SUBSCRIPTION

Name: _____

Company: _____

Address: _____

Postcode: _____

Email: _____

Prize winning Vauxhall

The all-new Vauxhall Combo has been voted International Van of the Year 2019 (IVOTY). Awarding the Combo 127 points, the jury of specialist journalists from 25 European countries put the new Vauxhall well ahead of the second-placed Mercedes Sprinter (92 points). The Combo's innovative assistance systems, economy and driver enjoyment all played decisive roles.

The jury also praised Combo's numerous assistance systems, such as the sensor-based overload indicator and the excellent all-around visibility – the second camera in the passenger-side mirror, for example, reduces the blind-spot on this side of the vehicle. The Combo Cargo additionally scores with the equally new sensor-based Flank Guard.

Benjamin Moore opts for silvery grey



Leading North American paint brand Benjamin Moore has revealed Metropolitan AF-690 as its Colour of the Year for 2019. Unveiled alongside a corresponding palette of 15 harmonious hues - a silvery grey with cool undertones.

Care homes get colour identity from Crown Paints



Akari Care – a nationwide residential care home provider – enlisted the help of Crown to create a uniform refurbishment programme for their extensive portfolio of properties.

Working alongside Renray Healthcare – a leading furniture supplier to the healthcare sector – Crown Paints and Akari Care have created six new colour schemes encompassing wall colour, wallpaper, carpets, curtains, bedding and upholstery.

With the help of the Crown Paints Colour Service, the colour schemes chosen are all dementia friendly and include, mauve pink, turquoise, natural, green, citrus and terracotta.

A range of products have been carefully hand-picked for each environment in the care homes.

Ideal for high-traffic areas, due to its 10,000 scrubs durability, Crown Trade Clean Extreme Stain Resistant Scrubbable Matt has been chosen for all walls in the corridor, lounge and bedroom areas, whilst the ceilings will be coated with Crown Trade Vinyl Matt emulsion.

Crown Trade Clean Extreme Mould Inhibiting Scrubbable Matt, has been specified for all of the bathrooms within the care homes to inhibit the development of mould growth on the paint film.

Other products chosen include Crown Trade Clean Extreme Antibacterial Durable Acrylic Eggshell for the kitchens and the Crown Trade Fastflow Gloss System and Crown Trade Full Gloss for all of the trims within the care homes.ex

Dulux Academy gets CiTB Approved status

The Dulux Academy has been officially recognised as a provider of training by becoming a CiTB Approved Training Organisation (CiTB ATO).

The endorsement is a result of the exceptional training provided by the Dulux Academy where courses designed to help decorators upskill, build their business and hone their design knowledge are continuously delivered to defined and industry-agreed standards.

Now approved courses - which include spray (Introduction, Advanced HVLP, Advanced Airless), craft skills (Gilding, Marbling, Graining) and wallpapering (spanning five courses from Digital Murals and Feature Walls, to Relief Papers) - will carry the coveted CiTB endorsement.

All attendees, who are registered with the CiTB and meet the general grants scheme eligibility requirements, will be part of the CiTB's automated grant payments system.

When enrolling on a course via www.duluxacademy.co.uk simply register your CiTB registration number and the names of who you wish to claim for and Dulux Academy will manage the reimbursement.



AkzoNobel's Colour of the Year

Spiced Honey has been unveiled by AkzoNobel as the Colour of the Year for 2019. The shade was selected following research into global trends, insights and consumer behavior.

It's a versatile and contemporary choice, complementing a wide variety of lifestyle and interior design preferences. It also expresses the new sense of optimism felt throughout the global trend research which was carried out.

The choice of Spiced Honey has also inspired four harmonious colour palettes. They are designed to stimulate consumers and make it easier for them to experience the Colour of the Year via the use of various tools, such as wet testers and the Visualizer decorating app.



Best practice is a keynote of 2018 Show

Visitors to this year's National Painting and Decorating Show can expect much more than great deals and innovative products as there is plenty on offer to help improve a decorator's application techniques and finishing methods.

The usual marketplace atmosphere that is a hallmark of the UK's largest event is supplemented with some real instructional help and advice given by experts in their particular fields. New for this year are Decorative Effect theatres where the techniques involved in marbling and graining as well as finishes with a more 'modern vibe' will be demonstrated continuously throughout the two days.

This is in addition to two MasterClass theatres where products right across the decorating spectrum will be put through their paces every 30 minutes.

Also new for 2018 is SprayZone, a feature area that will impartially highlight the benefits of different types of spray machine – and answer some of the questions that decorators may have regarding this increasingly popular coating method.

All demonstration areas and theatre sessions are free to enter as is the exhibition itself. Go to www.paintshow.co.uk for tickets.

Brewers opens 170th store

Brewers are delighted to announce the opening of Brewers Dover – their 170th store!

Positioned on the new Honeywood Trade Park, just off the A2, the new Dover Brewers store is perfectly located for the busy decorator or homeowner looking for some interior inspiration. The store stocks all the main trade paint and designer brands including Albany, Crown, Dulux, Johnstone's, Farrow & Ball, Little Greene and Zinsser covering every colour of the rainbow! Also, Fred Williamson and Sons Ltd, the largest independent decorator's merchant in the North East of England has recently joined the Brewers family.

The branches are located in Sunderland, Morpeth, Newcastle, Durham, Middlesbrough, Darlington and Alnwick. All Williamson stores now have access to Brewers extensive product offering and customers can enjoy the Brewers account benefits and online facilities.

DDC acquires Trade Paints And Doves

AkzoNobel has bought the business and assets of Surrey-based Trade Paints. With three stores in Epsom, East Molesey and Sutton. Trade Paints will continue to trade under its current trading format. In addition it has bought Surrey-based Doves Decorating Supplies. With four stores in Caterham, Dorking, Redhill and Reigate AkzoNobel takes its total number of Dulux Decorator Centres in the UK to 216.

The art of a perfect finish.

Introducing a quick drying,
water-based paint that lasts.

Stuart Aldous (b. 1973)
Dulux Select Decorator
Door Frame
Water-based on wood



New Dulux Trade
Diamond Satinwood

Sandtex on Lighthouse



More than 150 litres of Sandtex Trade's X-Treme X-Posure® Smooth Masonry Paint have been used to repaint the striking red and white bands of East Anglia's iconic Happisburgh Lighthouse. Situated on the East Anglian coast, the 85 foot high lighthouse bears the brunt of extreme weather from wind driven rain to coastal tides, so

painting the exterior is a vital way to ensure this landmark is protected from the harsh weather it is exposed to all year round. Sandtex Trade's water-based X-Treme X-posure paint, which has been specifically formulated for use in even the harshest of weather conditions to provide protection from the elements for up to 20 years, was the perfect choice for Happisburgh Lighthouse.

The team of four decorators from P H Hairsine & Sons repainted the entire lighthouse exterior, using Sandtex X-Treme X-Posure Smooth Masonry paint in white and a specially tinted red, over the course of two weeks.

The specialist painters painstakingly prepared the surfaces, by filling in small cracks and washing the whole building down ready for application of the first coat of paint to ensure a high quality, long-lasting finish. The team used a hoist to reach the top of the lighthouse, repainting each band as they worked their way back down.

Peter Hairsine, of P H Hairsine & Sons, said: "We use Sandtex X-Treme X-Posure for its durability as it lasts longer in extreme conditions, which is needed for the lighthouse as it is exposed to a lot of salt, as well severe weather. For us, this is also the best product because it dries quickly, which has been particularly important throughout this refurbishment as we needed each band to be dry before we moved down to the next one."

Exhibiting at
The National Painting and Decorating Show 2018
27th-28th November
**Live Demonstrations
& Free Samples Available**



Stand 24

PAINT PANTHER®
The Award Winning Paint & Varnish Remover
Tears through multiple layers of paint & varnish **incredibly fast!**

REMOVES METALISED PAINT

SUPER FAST ✓

EASY TO APPLY ✓
NON-D RIP GEL FORMULA ✓
REMOVES METALISED PAINTS ✓

AVAILABLE SIZES ✓
4L, 2.5L, 1L, 500ml, 250ml

Barrettime
TRUSTED BY THE PROFESSIONALS

‘The brand you can trust’

St. Ivel Way, Warmley, Bristol BS30 8TY.
T. 0117 960 0060 F. 0117 935 2437
E. sales@barretttime.co.uk www.barretttimePro.co.uk
Gold winner of the DIY Week Decorating Product of the Year 2011.



CLEAN YOUR ACT UP!

Double Sided | Absorbent | Powerful | Kind to Hands

Now Available in Handy Packs of 40



www.hippoproducts.co.uk



Limewash alternatives for medieval hall house

A Grade 2 listed north Devon home has been given a contemporary look with Earthborn paints. The late medieval hall house features particularly ornate plasterwork.

Owner Simon Clarke said: "The house is built of cob, a clay soil based building material, and the walls are lime plastered. In order to prevent damage caused by moisture build up in the walls I needed breathable paints, but I didn't want to use limewash again. I wanted a wider colour palette and paints that would last much longer."

Simon selected Earthborn paints which can be applied straight over limewash: the Ecopro Silicate Masonry System for outside and Claypaint inside.

The Ecopro Silicate Masonry System bonds with underlying materials to create a durable, water and weather resistant barrier. It offers the same high levels of breathability as limewash but is easier to use and lasts much longer.

Ideal for stone, brick, concrete, render or cob, it has 24 colours that will not yellow with time.



Claypaint is an emulsion that covers well and gives a distinctive, ultra matt finish. It contains no oils or acrylics, so is virtually VOC free and highly breathable. It's Ecolabel approved and available in 72 standard shades.

 **wondertex**

premfll&finish

The perfect finish for any type of decoration

Adheres to painted surfaces
Super fine for a smooth finish
Fast setting for early sanding
Formulated for plasterboard jointing, surface smoothing, repair and snagging work

Special prices now available, please contact Wondertex:
01827 254402 | wondertex.co.uk





IN ANY SPACE...
STAINS LEAVE
NO TRACE



**CLEAN EXTREME
MOULD INHIBITING**

Ideal for kitchens
and bathrooms

**CLEAN EXTREME
STAIN RESISTANT**

Ideal for high
traffic areas

**CLEAN EXTREME
ANTI BACTERIAL**

Ideal for hospitals &
healthcare facilities

Crown Trade helpline
0330 024 0297

Email
info@crowntrade.co.uk

For more information on the Crown Trade range visit: www.crowntrade.co.uk

It's not just paint.
It's personal.®

Pitch Pine

Cait is decorative painter working throughout UK and teaching from her studio in Perth, Scotland. You can see her work and connect with her on social media; Twitter and Instagram - @paintycait or Facebook - <https://www.facebook.com/carteblanchedecorativepainters/>

Anyone that follows me on social media will have seen at least one of the Pitch Pine projects we've done over the last year, it's been our most requested timber to grain. Pitch pine is almost impossible to get new so we have been matching the old and in Scotland there is a lot of it about. It may not be the most exciting timber but it makes a great graining exercise when practising heartwood shapes.



The ground for this is Benjamin Moore Harvest Bronze 1146 Pearl Finish, traditionally 08C35 is what is used.

This wood can be done many ways, beer then oil is popular however I've done this in acrylic glaze. You can use a range of materials to tint the glaze, one of my favourites is wood stain, General Finishes make excellent ones, otherwise I might use stainers, liquid artists acrylics or tube acrylics. The traditional mix is Raw Sienna, Burnt Sienna and Burnt Umber. For my

figuring stage I used my favourite mix of 1 part glaze to 1 Pecan Woodstain, then I added a good dollop of Polyvine Acrylic Stainer in Mahogany and a bit of Teak. For the overglaze I used the traditional recipe.

Brushes make a big difference to the style of heartgrain. I use 2 types, a squared off flat or "bright" and a sable rigger or pencil #4 or #5. If you look at the first image, in both heartwoods I used a bright for the top half of the figure and a sable for the bottom half.



Load your brush with the medium, but not too much otherwise when you soften it the figure will become too spikey. With the bright, hold it so that the bristles lie vertically and make a movement up and over without twisting the brush – the movement should come from the shoulder or the elbow not the wrist - this will give a thin side grain and it will be fatter as the flat of the brush travels over the peak. Carry out 3 or 4 of these before softening up and out from the heart of the figure. With the rigger, start using the very tip of the brush to create the side grain, gradually allowing the bristle to drop so it broadens out near the peak of the figure, lifting again as you come down the side. The rigger

will give the more curious curly figures; the flat or bright the long slim even figures.

For the side grain I like to use 2 main tools, a rubber comb and a piece of hessian. To create the bolder side grain lay in your glaze and lightly drag a dry brush through to even it out. Fold a piece of lint free cloth over the comb, I would start with the graduated side of it with the thickest comb shapes nearest the heart and draw it through the glaze following the flow of the heartwood. Soften gently away from the heartwood. The finer side grain can be done in the same manner with the finer sides of the comb but a really fine grain can be

created using just a piece of hessian folded and then firmly drawn through the glaze.

Once dry you can overglaze. The contrast between the heartwood and the side grain is rather stark at this stage so you want to allow more of the overglaze to remain in the heartwood than at the sides. To lightly manipulate the glaze my preferred tool is a camel hair cutter; a foam brush or even just a piece of cotton cloth will do. Draw through the glaze and stop where you want a highlight or lift away sections. Pull the glaze into an area for a darker “shadow”. Soften all over. Finish with an acrylic mid sheen varnish.

Access:

When is a Certification required and why?

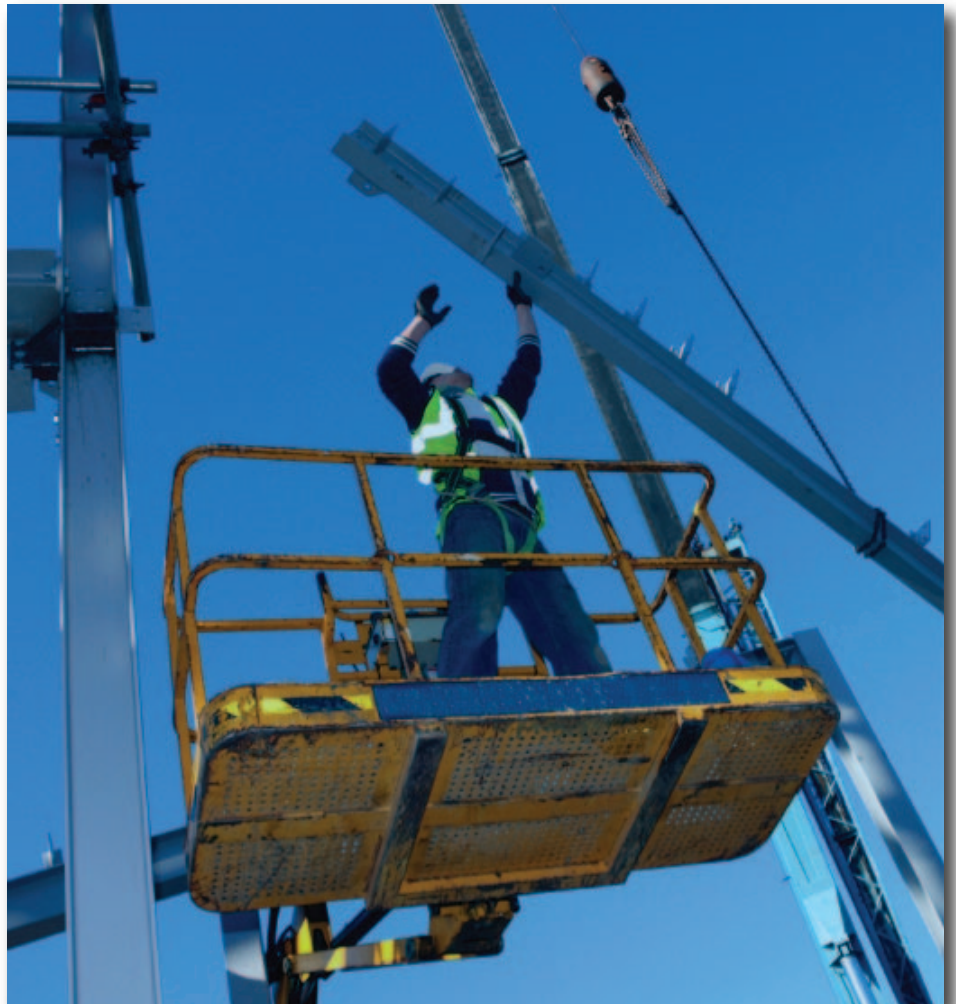
Working at any height can be a dangerous task, and with the demand for employees trained to work at height on the rise, it's important to know all the factors of scaffolding and whether you require training

With scaffolding, competency is key. Not all situations will require a certification, but the right level of experience and training can not only prevent any mishaps, but also lower any risk for you and others.

While there is no legal requirement to obtain a qualification, many employers will use training as an indication of competence and your abilities to carry out appropriate tasks. Before allowing any members of staff to work on scaffolding or carry out a job at height, you should make sure they have the sufficient knowledge and skills to perform the task.

In less technical tasks, an employee may only need thorough instructions and a small level of training, however when a higher level of technical experience and skill is needed, for example, drawing up and assembling a complex scaffold structure, existing training and certification schemes such as PASMA would be of significant benefit to both employee and employer. So, what is this certification and how can it help your business? PASMA is the obvious place to go. Founded in 1974, PASMA or the Prefabricated Access Suppliers' and Manufacturers Association is the recognised focus and authority for mobile access towers, advancing in safety standards and is generally the best practice throughout a range of sectors, including scaffolding.

The Safety Report of the National Access and Scaffolding Confederation (NASC) 2017



report has now been published based on the 2016 report and shows an increase of injuries over seven days, however a decrease in major injuries overall.

In comparison to the previous year in 2015, the total number of incidents hasn't changed, though the frequency rate and

incident rate has significantly decreased, even more so from previous years. This is also with an increased number of operatives and companies being on the records.

While the statistics show that accidents occur from various causes, many of these are related to scaffolding structures, working



THE INDUSTRY'S MOST HIGHLY DECORATED LADDERS.

We know how important it is for you to have the right tools to do your job. Our ladders are designed with you in mind and come with additional features to help to make your job easier and productive.

Your safety is our priority. That's why all our ladders are tested to the highest standard using latest state of the art technology.

Available from all leading Decorator Centres throughout the UK.

Visit Stand 53 at the
National Painter & Decorator show on
27th & 28th November
to find out more.



Ladder standards in the UK have changed.

Tradesmen should only use ladders designed for professional use.



YOUNGMAN®

platforms of height and falls of materials from scaffolding.

One of the most prominent benefits of PASMA training is knowing how to stay safe when you are working at height, as well as keeping others safe. Not only will the course teach the trainee the ins and outs of worker safety, but it will also make the individual much more aware of their surroundings, meaning they can recognise potential dangers before they become injuries or even fatalities. Having the ability to identify risks is just as important as being able to prevent them.

Any PASMA trained worker is much more aware of the risks, and their skills and experience in relation safety are of the highest standard.

Not only will the person carrying out the training course learn important factors of health and safety but they will be fully competent in working using a mobile scaffold tower, as well as how to assemble them safely and check for damage, all while following appropriate guidelines.

All training courses will include practical and theory based components, teaching the attendee certain modules such as:

- Health and Safety at Work Act
- Work at Height Regulations
- Accident Awareness and Prevention
- Understanding Instruction Manuals
- Advanced Guardrail and the 3T Method
- Safe use of Mobile Access Tower
- Stability and Ground Conditions

Over 60,000 individuals partake in the course every year either at user or management level, teaching every learner that working at height can be rewarding and satisfying if they equip themselves with the right knowledge, skills and training for the job.

But what type of training do you need? Whether a manager, employee, employer or business owner, various levels of learning could benefit you greatly. Here at Boss Training, we have a number of courses available, making sure there is one perfect



for you and your employees.

PASMA Work at Height Essential Training Course

This will end in a PASMA ID Card which is accepted on building sites and other workplaces nationwide. Along with this, you will also have a well-rounded, comprehensive understanding of safe work practices at height, and most importantly a peace of mind that you and the workers around you are completely safe. You will carry out modules such as:

- Work at Height Regulations (2005)
- Aims and Objectives
- Guidance on Working at Height
- Fall Prevention
- Dangers of Falling Objects

The course will last approximately half a day and the certification will be valid for five years. It is structured as training and an assessment in a classroom with a multiple-choice exam.

PASMA Towers for Users Training Course

Anyone whose duties include the need to assemble, inspect, alter, use or dismantle any mobile access towers should attend this course and complete the PASMA training. This course will include practical and written parts, including a test and practical tasks of constructing a tower safely. This is perfect for

anyone who feels like a practical session would also benefit them.

Giving an in depth focus on every component in PASMA, this course is essential for those working on towers in their day to day activities.

The course is generally lasts a day and once received the certification will last five years.

PASMA Low-Level Access Training Course

PASMA low level training is intended for anyone who uses low level equipment across all industries, including podium steps,

scaffolds and low access towers. These are now commonplace in many areas such as schools and hospitals, so will give the attendee full knowledge of how to assemble, move, dismantle and inspect any related equipment. The course usually lasts half a day and includes both practical and theory modules.

PASMA Combined Course

You can combine the PASMA standard training with the low-level course to blend knowledge and save time and money. The PASMA combined course provides full training on both sides in one day, covering essential training in the use of mobile scaffold towers and low-level equipment with a platform of 2.0m or less. Involving both practical and theory, on completion this certification will be valid for five years.

While working at height presents plenty of obvious risks, if operatives are properly trained within the safe practices, the use of mobile scaffold towers is an extremely reliable and accessible way of working.

Boss Training is an authorised member of PASMA and therefore can issue PASMA training photo cards and certificates of competency to those who are successful. Only registered PASMA training centres can deliver this course and issue the relevant documentation, and Boss Training are proud to be a part of this elite group.

Quality...



Meet us on
Stand 28
27-28 November
RICOH Arena,
Coventry



HANDMADE IN
THE USA 

Uncompromised

CORONA[®]

web.
online sales.
tel.
email.

www.coronabrushes.co.uk
paintbrushes.shop
0333 20 21 031
info@coronabrushes.co.uk

Glowing in the dark *or not?*

Fluorescent and luminous paints can be a significant aid to site safety, enabling areas of concern or hazardous objects to be clearly identified. But confusion does exist around the roles and functions of fluorescent and luminous paints.



Fluorescent or Luminous - What is the difference?

While both Fluorescent and Luminous paints appear to glow; only luminous paint emits light.

Luminous paint works by storing light energy, and then releasing it to emit a photophosphorescent glow when a light source is removed. During the day, and in a well-lit environment, a luminous paint will seem dull and will not draw attention, which limits the application of this paint to brightly lit spaces. Its full effect is only visible when the environment is rapidly plunged into darkness, it will then emit its stored light for

up to 20 minutes.

Fluorescent paint works by enhancing the light, making the colours brighter and extremely visible in both bright and low light. However when there is no light to amplify, such as in darkness, fluorescent paint cannot be seen. Unlike Luminous paint, Fluorescent paint cannot be used to glow in the dark.

Fluorescent Paint – Application and Uses

The key function of Fluorescent paint is high visibility in both bright and low light, making it an extremely useful for safety applications. Fluorescence is used in high-visibility

clothing, and can be utilized further to draw attention to exits, safety and first aid equipment. It can also be implemented to highlight low beams, bollards and protruding objects that may present an injury risk.

The key element of a fluorescent coating is the base; the white base coat is fundamental in capturing the light and providing the reflectivity necessary for the paint to function.

The base coat should be applied to provide a strong consistent reflective white finish. Once dried, only one or two coats of the coloured coat is necessary – this coat is translucent in nature and designed to allow the light to

"The closest thing I've seen to a spray finish from a roller"

Decorating forum user

ProDec
ADVANCE



featuring
**Fused Fibre
Technology**

Interwoven fibres
that resist damage

- ✓ **Lint free ultra-smooth finish**
- ✓ **Snap close airtight storage bag**
- ✓ **4", 9" and 12" sizes**



**PERFORMANCE
GUARANTEED**

OR YOUR MONEY BACK*

*see prodec.uk.com for details

**Try Ice Fusion for yourself
- visit us on stand
84 at the National
Painting &
Decorating
Show**

pass through. The colour should not obliterate the white beneath as would be expected from a conventional coating. This can then be covered, if necessary, with a clear protective topcoat to preserve the coating.

Fluorescent paints do have a lifespan, and over time the pigments become exhausted. This means they can no longer amplify light and can begin to appear patchy. When used inside, provided good painting practice is followed, and a protective topcoat is used, you can expect your coating to last for a number of years. However, this could be as little as a year when exposed to constant UV light outside, making re-application necessary.

Luminous Paint – Application and Uses

Luminous paints possess the ability to remain visible for a limited time in the event of a sudden loss of light, depending on the application this can sometimes be up to an hour, but as a rule of thumb for most applications this is usually closer to 20 minutes.

They are particularly useful for safety and security applications – highlighting escape routes, doorways and fire exits in the event of a blackout. They are also often used to produce some interesting theatrical effects, and have even been used in contemporary art.

Unlike its counterpart Fluorescent paint, Luminous paint can be used unobtrusively, when applied it appears off-white, making it particularly useful in environments where the aesthetics of a space are important.

Much like Fluorescent paint, Luminous paint is also dependent on a well painted base coat, the white base should be applied to produce an even finish, over coated with one or two coats of the Luminous overcoat, and then finished with a clear protective topcoat. This will give the paint the protection necessary for most environments.

Luminous paint also has a lifespan, the pigments become exhausted and can no longer store the light after prolonged use. Provided good painting practice is followed, and a protective topcoat is used, you can expect your coating to last for a number of

years inside. However, due to the gradual transition to darkness experienced with natural light, Luminous paint is not suitable for use outside.

Both products have a large range of applications in the factory, warehouse or home and are included in the Coo-Var Safety and Security range.

*For More information: Coo-Var, Lockwood Street, Hull HU2 0HN
Tel: 01482 - 328052*



The Paint Shed

The trusted choice for trade

Price Guarantee | Free Delivery

All of your favourite brands
under one roof

CROWN

Dulux

Macpherson
TRADE PAINTS

JOHNSTONE'S

JOTUN
DEMI
DEKK

Leyland
Trade

Save on your next job at www.thepaintshed.com



PRIME BLOCK FINISH ONE CAN DOES IT ALL



- ♦ All-purpose water-based primer and finish in ONE CAN.
- ♦ Blocks, seals, locks, kills and hides stains. ♦ Anti-corrosive on all metals.
- ♦ Tintable to full BS and RAL colours. ♦ Interior/Exterior durability.
- ♦ Sticks to all metals, woods & building plastics.



For more information, please email: enquiries@bradite.com

 @Braditepaints www.bradite.com

Dulux Trade launches Diamond Satinwood



Dulux Trade has launched Diamond Satinwood, demonstrating further commitment to water-based solutions. The new water-based formulation promises excellent flow for a high quality finish and professional results.

Diamond Satinwood has been formulated to allow decorators to switch to a water-based product that will sustain the durability promise of the Dulux Trade Diamond range. Made for use on woodwork and trims, the water-based solution is - like the rest of the Diamond range - scuff, scrub and stain resistant - offering durability against stains, grease marks and day-to-day knocks. This launch means that Dulux Trade now offers a complete range of water-based products..

The Dulux Trade Quick Dry range has also been given a makeover, with the packaging redesigned to make it easier for painters and decorators to identify water-based alternatives on shelf.

Significant investment in research and product development has ensured that the Dulux Trade water-based alternatives can stand up against solvent-based products in providing the professional finish and ease of application, whilst delivering quicker drying

time and lower odour.

The Dulux Trade Quick Dry range and the new Diamond Satinwood formulas dry twice as fast as solvent based paints. The formulation is recoatable in just six hours.

Following substantial investment in research, trials and development of the new product over the past five years, the range has been designed to ensure that professional decorators are able to make the transition away from solvent-based products, without compromising on quality.

Ahead of launch, as well as lab testing, the Dulux Trade Diamond Satinwood formulation underwent real-world trials in the Dulux Academy. These trials were carried out not just by research and development experts, but with painters and decorators themselves, to ensure that the product met the needs of their day-to-day jobs.

According to Dulux Trade's market data, there was a 13 per cent increase in water based

sales from 2017 vs 2016, compared to a seven per cent decrease in the purchase of traditional solvent based paints, highlighting the growth in search for innovative, high quality decorating solutions. This emphasises the growing appetite amongst painters and decorators for more efficient options, whilst maintaining the same high quality, long-lasting finish as traditional methods.

Karen Wilkinson at Dulux Trade explains, "We are continuously looking at ways we can create solutions to help painters and decorators across the country. This range was born of listening to the ambitions and needs of Dulux Trade customers who need to leave every job, proud that the finish is brilliant and it's their name that's on it, in order to keep their customers coming back.

"We've invested and researched tirelessly to make sure that our product quality isn't compromised and our Dulux Trade customers can have the confidence to switch to water-based for good."



BEDEC

THE PAINT COMPANY



Don't *just* decorate... **BEDEC-ORATE!**



Problem solving and time saving products
for *the professional decorator*



WATER BASED
**METAL
PRIMER**
FOR ALL METALS

NEW!

NEW! All metals, water-based rust inhibiting primer.
After extensive testing, a metal primer for **ALL** ferrous and non-ferrous metals,
prior to painting with water or oil-based paints.

Innovators in Water-based Technology

Bedec Products Ltd., Units 1 & 2 Poplars Farm, Aythorpe Roding, Dunmow, Essex. CM6 1RY

Tel: +44 (0) 1279 876 657

Email: info@bedec.co.uk

www.bedec.co.uk

Paint sorted *in just a few clicks*



Naiem Wafa, general manager at Crown Decorating Centres explains how online purchasing can provide an additional benefit to decorators especially when stocking up for those last minute projects where time is of the essence.

Even with the best planning and preparation, additional products often need to be purchased mid-way through a project either because a decorator has run out of product sooner than expected or their customer has added another job that wasn't quoted for originally. By ordering online at a convenient time, decorators don't need to break off and dash to their nearest store before closing time to pick up the additional products needed to complete the job.

The main concern for decorators buying products for a live project online is the lead time for delivery. When ordering at the last minute to save time decorators need to be confident that they'll get the products needed straight away. That's why Crown Decorating Centre's new website offers

decorators two options for delivery or collection for online orders.

Customers who place their online order before 12 noon will be able to pick it up from their chosen Crown Decorating Centre by the end of the same day or, provided the order is submitted by 4pm, it can be delivered direct to site the next working day – reducing the overall downtime for a decorator to stock up.

Another time-consuming aspect of the job is costing up new projects. Crown Decorating Centre's new website has been designed with a 'My Job List' functionality specifically to assist decorators with this process.

Decorators who have set up an online account on the new website will have access to their account prices, allowing them to

quote for a job instantly using accurate pricing. They can then use the prepared quote as an online shopping list to purchase all the items needed. The site also enables decorators to access their complete order history, from both online and in store purchases, to make future admin easier to deal with than trawling through stacks of paper receipts.

Existing Crown Decorating Centres customers who would like to sign up online will need to speak to their local store manager to activate their account, or get in touch using the 'Contact Us' section of the website. Customers who are new to Crown Decorating Centres should click on the 'Apply for Account' tab at the top of the homepage and follow the steps to sign up online.



No paint bleed



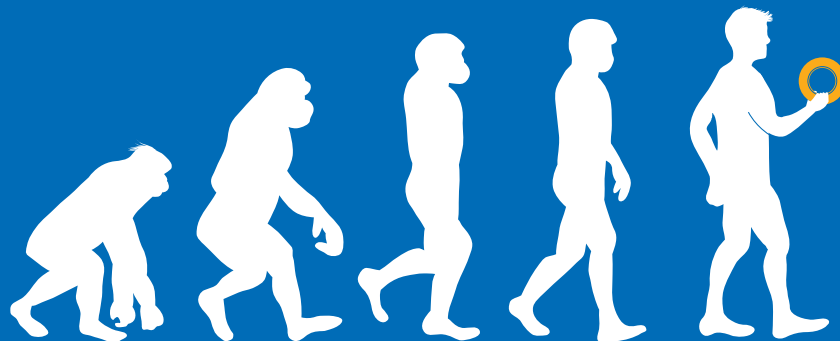
Clean removable up to 6 months



Indoor and outdoor use



Saves time and money

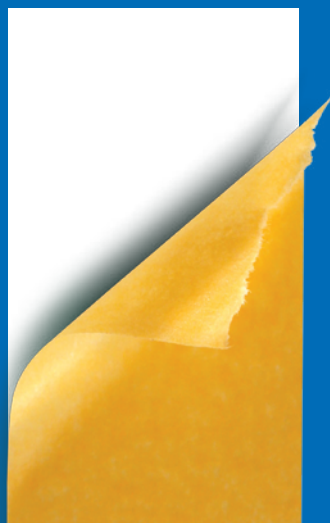
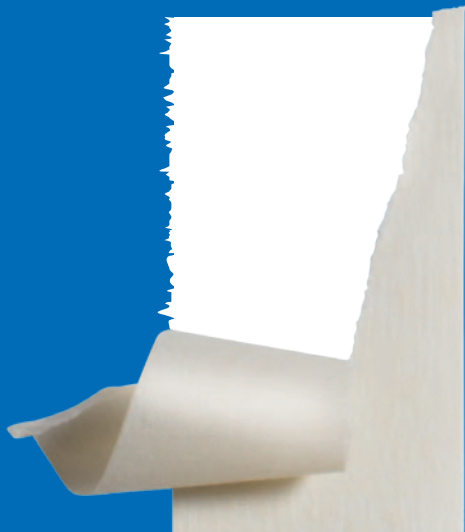


NEVER MISS AN EVOLUTION.

FREE TRIAL PACKAGE!

Deltectape.com/gold-sample

CRÊPE TAPE **VS** DELTEC GOLD



DELTECTAPE

A PRO KNOWS



www.deltectape.com | +31 (0)413 - 24 44 82 | info@deltectape.com

Mirka's new training centre



Mirka UK has opened a new state of the art national training centre in Milton Keynes.

Mirka's new training centre is part of the company's ongoing commitment to providing its customers with training and development around their high-quality abrasive, tooling and polishing solutions, enabling businesses to improve output and profit performance.

The training centre will offer customised training programmes for groups of up to 12 delegates based on the customers' needs and requirements.

The 2,500 square feet site has been designed to focus on user experience with a

practical demonstration space where Mirka's inhouse technical experts can showcase the company's latest processes and products and where attendees will be able to complete the hands-on technical training in a workshop setting. It also features classroom space for more knowledge-based learning, which can then be transferred into the practical elements of the training programme.

Craig Daycock, managing director of Mirka UK, says, "We understand that the sectors we work in are constantly evolving in terms

of the processes and products required to improve production, output and profit whilst still reducing cost and waste. Training is essential for our customers to achieve this. To take our onsite customer training to the next level, we made the decision to invest in our own training centre and we look forward to ensuring those users who come through our doors will leave knowing they have developed and learned new skills and techniques that will assist them in their jobs and enable their companies to expand their business opportunities."

Page 26 ➔

THE LITTLE ONE-HAND SANDERS

with speed control and PES filter cartridge in set



SMALL SURFACES AND EDGES

DELTA SANDER

ODE 100-2 set

- 200 watt
- 8000-13000 rpm
- 16000-26000 opm
- Orbit 2 mm
- Only 1.2 kg
- Including sanding paper 1 x P 80 and 1 x P 120
- External dust extraction Ø 27 mm



CORNERS AND EDGES

PALM SANDER

OSE 80-2 set

- 8000-13000 rpm
- 16000-26000 opm
- 200 watt
- Orbit 2 mm
- Only 1.2 kg
- Including sanding paper 1 x P 80 and 1 x P 120
- External dust extraction Ø 27 mm



ROUND SHAPES

RANDOM-ORBIT SANDER

ORE 150-5 set

- 350 watt
- 5800-10000 rpm
- 11600-20000 opm
- Orbit 5 mm
- 2.1 kg
- Including sanding paper 1 x P 80 and 1 x P 120
- External dust extraction Ø 27 mm

SAFETY VACUUM CLEANER

VCE 26 L MC

- 1250 watt
- 3600 lpm
- 21000 Pa
- Container Volume 25 l / Wet vacuuming 16 l
- 8.4 kg

VCE 33 M AC

- 1400 watt
- 4500 lpm
- 25000 Pa
- Container Volume 30 l / Wet vacuuming 17 l
- 15.2 kg



PLEASE COME
AND VISIT OUR BOOTH
ON STAND 11
AT THE

NATIONAL PAINTING
& DECORATION SHOW



GIRAFFE®

GE 5

- 500 watt
- 1100-1650 rpm
- Ø 225 mm
- Length 1520 mm
- 3.9 kg

For more information please contact

Stuart Colclough

PO Box 192, Darlington DL1 9FN
Phone +44 (0) 1 325 741793
Fax +44 (0) 1 915 045133
Mobile +44 (0) 77 909 90682
uk.sales@flex-tools.com

FLEX
Das Original

Here are some of the products which could speed up and improve your prep work.



Dust-free properties are always taken into consideration when it comes to developing new tools.

Moreover, our tools are powerful, quiet and have low vibration levels. They are also the smallest and lightest on the market thanks to the use of brushless technology.

Inspired by our own experiences and frequent dialogue with our customers, our ergonomically designed tools are award-winners.

Construction and Decoration-CD

The CD sector includes all sanding applications for professional painters and builders. Our success is based on a combination of dust-free sanding and easy-to-use tools which



results in quicker processes, a healthier working environment and improved productivity.

Every professional painter or builder

knows that time is money.

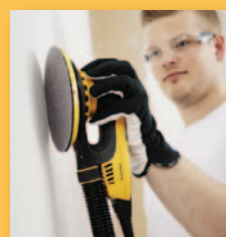
LEROS – Perfection From Any Angle

- Launched in April 2018
- A number of features including a 5mm random orbit action and 180 degree sanding head



● At 3.5kg it is the world's lightest wall and ceiling sander

● Dual extraction points provide superb dust



extraction that when combined with dust-free net abrasives, create a cleaner and healthier working environment.

DEOS – Closer for Perfection

- Launched in August 2017
- DEOS integrates all the innovative features that have made the Mirka DEROS so popular, and more.
- At only 101 mm high, the tool's compact and very low profile makes it easy to maneuver and helps deliver a precise and efficient sanding performance
- DEOS to be launched in 110v



the varnish experts

a great new start to a perfect finish



check out our range of finishes



dead flat



satin



gloss

POLYVINE®

find us in store or online at polyvine.com

VAN GOGH
DID IT. CÉZANNE
DID IT. WE DO IT. WE
SIGN EVERY SINGLE
MASTERPIECE WE
MAKE TOO.



FARROW & BALL®

CRAFTSMEN IN PAINT AND PAPER

NINE NEW COLOURS TO PUT YOU AHEAD OF THE COMPETITION

For the first time in two years, Farrow & Ball releases new colours.

We caught up with Gareth Hayfield, Head of Research & Development at Farrow & Ball, and Head of Creative, Charlotte Cosby, to talk about how these versatile new colours have been developed.

The 72-year-old British paint manufacturer has earned a reputation for creating iconic, trend-setting colours that deliver impact in both domestic and commercial properties, but how are these new colours chosen?

“Each new colour has to flow tonally within our existing colour families so that they work together in a wide range of colour schemes,” begins Cosby. “It’s not as simple as mixing up a shade we haven’t done before.”

From a technical perspective, new colours go through a rigorous formulation process that involves scrutiny under different light sources, and meticulous checks for spreading rate, opacity and application. “It takes a long time and we work

through thousands of different configurations to get the colours where we want them,” says Hayfield. “We have to be absolutely certain that when they leave the lab, they’re going to work effortlessly for professional painters who need products they can rely on.”



GARETH HAYFIELD
Head of Research & Development

CHARLOTTE COSBY
Head of Creative



De Nimes® No.299 Modern Emulsion

The names of Farrow & Ball colours are part of the journey. “Each story is thoroughly researched,” explains Cosby. “For instance, De Nimes is inspired by the colour of workwear first woven in the French city of Nîmes, and Preference Red is actually a nod to our original trade name, Preference Paints.”

As well as De Nimes and Preference Red, Farrow & Ball’s new colours are Rangwali, Treron, Paeon Black, Sulking Room Pink, Bancha, Jitney, and School House White. As new colours come into its collection, others are archived to rebalance the range of 132 iconic Farrow & Ball colours. Archive colours are always available to order.



Preference Red® No.297 Modern Emulsion



DISCOVER THE NEW COLOURS BY REQUESTING A FREE MEDIUM COLOUR BOOK.
A LIMITED NUMBER ARE AVAILABLE FREE TO THE TRADE.

Secure yours by visiting farrow-ball.com/freefan today.



WWW.FARROW-BALL.COM



Covers Everything!

National Painting and Decorating Show 2018
RICOH ARENA, COVENTRY 27/28 November

Go to www.paintshow.co.uk for free tickets or call 020 8645 2433



Great Connections to a Great Show



The show venue, complete with on-site hotel, parking, restaurants and bars, is easily accessible by road, rail and air. It's just a two-hour drive from 75% of the country.

Birmingham Airport is a short drive away, and an on-site train station provides an hourly service between Coventry City station and Ricoh Arena.



This event has it covered

FROM product innovation to trusted best sellers, this year's event will display the latest trends, textures and techniques making decorating headlines.

Visitors will discover profitable, and potentially lucrative, opportunities to meet exhibitors face-to-face, and exchange ideas and solutions with like-minded decorating pros.

So what are you waiting for? Pre-register today at www.paintshow.co.uk for the major industry event that presents all things decorating – from paint and wallpaper, to prep tools and applicators, to colour trends and time-saving techniques.



BRIEFLY: 11th year at the show, and still innovative – see the **Tesa range** on stand 55... special limited period offer from **Chemfix** for its Timbaplast Starter Kit Box... pick up your free sample of **Bedec** Multi Surface Paint...

Futuristic, super strong, lightweight and **dripless**, that's the ETS3000EL caulking gun – see a demo on stand 68A... Get a free sample of 'One Can', **Bradite's** revolutionary all-in-one primer, blocker & finish at stand 83. **Graco** will

demo the latest 110V version of its APX Texspray unit on stand 33... and of course don't forget to pop on to the **Dulux** stand to shake paws with the Dulux Dog!...

TWO WAYS TO REGISTER

Complete this ticket and hand it in when you arrive.

It provides **FREE ENTRY** for one person and is valid for both days.

OR beat the queues and pre-register at www.paintshow.co.uk

Mr ☐ Mrs ☐ Miss ☐ Ms ☐

First Name:

Surname:

Company:

Job Title:

Address:

Town/City:

County:

Postcode:

Country:

Email:

Please tick if you would like to receive email updates from PDS Promotions Ltd. (National Painting & Decorating Show and Painting & Decorating News) ☐

PLEASE TICK THE BOX WHICH DESCRIBES YOUR COMPANY OR ORGANISATION'S MAIN ACTIVITY (Tick ONE box ONLY)

Student Parties must pre-register at www.paintshow.co.uk

AA ☐ Painting/Decorating Contractor

AB ☐ Architect

AC ☐ Building Contractor

AD ☐ Developer

AE ☐ Distributor/Stockist

AF ☐ Interior Design

AG ☐ Housing Association

AH ☐ Local Authority

AI ☐ Public Utility

AJ ☐ College/Training Establishment

AK ☐ Other

(please state below)

Have you visited the show previously? YES ☐ NO ☐

Number of employees in organisation:

1 – 5 ☐ CA 6 – 20 ☐ CB Over 20 ☐ CC

DATA AND PRIVACY STATEMENT

I understand that by choosing to allow my badge to be scanned by an exhibitor, sponsor or speaker when at the event, I will be providing consent for my personal data being used to contact me about their products or services and understand that this exhibitor, sponsor or speaker may transfer this data outside of the European Economic Area for these reasons. Please tick to confirm you have read and understand the **Privacy Statement** ☐



SEE THE MASTERS AT WORK

Sponsored by Packex, our two MasterClass theatres will again present practical presentations and demos every 30 minutes. So take a seat, rest your feet and watch the experts in action as they reveal plenty of tricks and techniques of the trade.

SPRAYZONE

Making its debut this year is SprayZone, an area designed to take the mystery out of spraying. This new feature is designed to complement the demonstrations by spray equipment manufacturers which have always been very popular with visitors. Whether already familiar with spray painting or complete novices, visitors will be instructed by demonstrators in the proper and safe use of several different types of equipment.

There will also be impartial advice on coatings, masking products, abrasives and floor protection.

*There's so much to see that you might welcome a break to recharge your batteries and plan the rest of your visit, so drop in at the **CoffeeZone**, sponsored by Crown Decorating Centres.*



Each day of the show the first 1000 visitors to arrive will receive a FREE DecoBag packed with goodies donated by exhibitors

The popular Lucky Dip will be back again this year, making everyone a winner of useful gifts, samples and promotional items. 1000's of gifts to take home!



Every year this show buzzes with product launches, hands-on demos, theatre sessions, show-only deals, free samples, how-to information, competitions, raffles, prize draws, sporting challenges and celebrity guests.

BRIEFLY

Trimaco will showcase its range of products for jobsite prep and protection . . . **Avko Interior** will demonstrate its luxury textured feature wall paint and smooth matt emulsion . . . **PlastiKote** will launch a new one-stop-shop range for the decorating trade . . . Visit **Coo-Var** where there will be plenty of demos, product samples, goodie bags and a new product launch – plus your chance to win an airless sprayer worth over £250! . . . **StortEsken** is launching Multi Wipes into the market. Grab a sample on the **Osmo** stand . . . **Little**

Greene will be exhibiting its latest paint collection, a refreshing new palette of authentic National Trust colours . . . **MagnaMuros** will launch the Paint For Pros range . . . Check out why you should be a member of the **Painting and Decorating Association** on stand 64 . . . make sure you view **Farrow & Ball's** distinctive paint colours and handcrafted wallpapers . . . **Ciret** will showcase its recently launched Masq range, along with a variety of brand new products being launched exclusively at the show.



They've got it covered

3M
AJ Systems
Akcali Boya Ve Kimya Sanayi
Ticaret A.S.
Alliance Workforce
Aristospray
Artex
Avko Interiors
Barrettine Products
Bedec
Benjamin Moore UK
Big Wipes
Bradite
Brewers Decorator Centres
Ciret
Coleman Bros
Colour Genie/Tide
Coo-Var
Craig and Rose
Crown Decorating Centres
Crown Paints
Deltec Tapes
Dexter Workwear
Dripless Inc
Dulux Decorator Centre

Dulux Trade and Dulux Academy
Dupre Minerals
Ecozee
Farrow & Ball
Festool
Flex Power Tools
Graco
Graphenstone UK
Gray Campling
Go Paint
Hightower Painting Products
Indasa
Isomat
Jakob Hardi
Kolorbond
Ladderm8rix
Ladder Limb
Liberon
Little Greene Paint Company
Lyte Ladders and Towers
MagnaMuros
Make Good
Mirka Abrasives
Muraspex Wallcoverings
National Abrasives

Osmo
Packex
Paint Spill Rapid Recovery
Painting and Decorating Association
Painting and Decorating News
Painting Craft Teachers Association
Paintnetz Paint Filters
Painttech Training Academy
Pioneer Brush
PlastiKote
Polyseam
Prodec
Professional Painter and Decorator Magazine
Q1 Tapes
Rainbow Chalk
Repair Care International
Roll Roy
Rupes
Rustins
Sait Abrasives
S&S Home Supplies
Sherwin Williams
Shield Quality at Work
Shurtape

Sia Abrasives
Silk Plaster Group
Smart Strip Paint Removal
Sprayman UK
SprayZone
Staalmeester
StortEsken
Suretherm
Teknos Pro
tesa
Tikkurila
Timbabuild Epoxy Wood Repair
Tradepoint
Trimaco
Unicell Poland
Univar Specialty Consumables
Uniwipe
Vista Digital
Vliegenthart
Wagner
Werner
Zipwall

Decorating solutions

from Axis Decor



Captain Chunk Roller Trays

Our new Captain Chunk trays are incredibly strong, and come with a large paint capacity. They feature perfectly shaped corners for pouring back any excess paint and a built-in brush comb for scraping off any extra paint. They also come with a specially designed roller grid that ensures paint is evenly dispersed onto the roller sleeve.

The larger tray model has a 2 litre paint capacity, can support up to 10" rollers and comes with a roller frame rest. The smaller model comes with similar benefits, but is suitable for rollers up to 5". With their tough construction and intelligent design, they are the ideal trays for any painting project.

This new range will be launched with transparent liners (available in both sizes). To keep up to date with our latest products and competitions, follow us on Instagram @axisdecor

Brewers *brief*

Online Account Facilities

At Brewers we want to work with you, our customers, to help develop your business.

We know that to our customers time literally is money and Brewers.co.uk is here to help you source the products you need to get the best results.

As a Brewers cash or credit account customer, you can now order online, arrange delivery or collection and manage your account in real time, leaving you more time to spend with your customers. The online account facilities mean you're able to check stock at any Brewers store whilst viewing your trade prices at any time of the day.

If you're a Brewers credit account holder, you can also keep an eye on your account balance, check over past transactions or print copy invoices and credit notes whenever you need to, all from your account login at brewers.co.uk.

You'll also find some handy tools on the Brewers site to help you select the right product for the job. Our Problem Solver tackles all manner of decorating dilemmas, from treating stains such as graffiti to preparing a metal surface with old bubbled paint. Simply select your tricky substrate or surface defect for guidance.

Customers can also request a site visit or specification for particularly complicated jobs directly from the Brewers site. Simply complete the summary form and we'll get in touch to take the headache out of the planning.

To find out more about any of these online services including opening a Brewers cash or credit account, simply visit www.brewers.co.uk today.

One Can means one can

Just how multi-purpose is multi-purpose? Bradite's new product redefines this.



Following an intensive three-year development process, specialist paints manufacturer Bradite has launched a product that will upgrade the protective coatings marketplace by offering the trade an all-surfaces product from a single can.

"There are other products that claim to do what we have achieved but these are not fully anti-corrosive and they invariably require separate primers," says Bradite National Sales Manager James Burton.

"The particular aspect of Bradite One Can is that it has full adhesion, it is anti-corrosive and it is a stain blocker, or to be more specific, a stain locker."

One Can is an all-purpose, water-based primer and finish product which is designed for both interior and exterior use. It's single pack paint, touch dry in 30 minutes, low odour, low VOC and can be used on any correctly prepared substrate including plaster work, plaster board, hard and softwoods, tanalised timber, marine or regular ply, degreased new and aged galvanised surfaces, concrete, aluminium, stainless steel, powder coatings, uPVC, mdf, plastisol cladding, fibreglass and GRP, aged gloss paint, glass and ceramic tiles,

Formica/Melamine and commercial ceiling tiles.

Recommended areas of use for the product are stain blocking and anti-corrosive covering for ferrous and non-ferrous metals. It can block out water damage, knots, smoke damage, tannin bleed, rust and nicotine stains.

Re-coatable after just one hour One Can is easy to apply using either roller, brush or spray. It can be used as both primer and finish, eliminating additional primers and undercoat saving both time and cost. No longer will different cans be required so saving on storage space as well. The product is available in eggshell finish and the full range of BS and RAL colours.

Bradite enjoys a strong reputation, both for the quality of its various products and the technical back-up that supports their use. The development of One Can underlines this expertise.

"We have achieved a fully water-based product that combines the three qualities of strong adhesion, anti-corrosion and stain blocking," explains James. "To do this we had to make the coating harder than is normally found in water-based products,

more like a solvent-based paint. You have to lower the tension of the coating to ensure that it goes on very smoothly. This we have achieved."

The rigorous testing procedure in the Bradite laboratory has included more than 250 hours of salt spray corrosion testing, more than 2000 scrub cycles, initial flash-rust and long term corrosion testing, taped cross cut adhesion testing and tannin and stain block tests using merbau, a wood that contains a very high tannin content.

With One Can added to the Bradite stable a couple of existing products will be superseded but, says, James, there are different reasons for using different products from the Bradite family. "It's very much horses for courses. The main market for One Can is the maintenance market, especially where a decorator is looking for something water-based which therefore has no smell, an important consideration for a number of customers."

He adds: "Whether you are painting a small domestic radiator or the end of the pier the One Can system will handle it. There's no reason why any decorator or maintenance person should not have this product in their van."

The Wagner logo is located in the top left corner. It consists of a black triangle pointing upwards, followed by the word "WAGNER" in a bold, black, sans-serif font. The entire logo is set against a bright yellow rectangular background.

WAGNER

WE JOIN FORCES.

HeavyCoat 750:
Next Generation Airless

HydraStroke
TECHNOLOGY™



wagner-group.com

Hand painting stripes on furniture

By Lynda Bergman

For me, the hardest thing about painting stripes on furniture is drawing the stripes. I always use a ruler and a soft pencil so unused lines can be erased or painted over. I do not use tape because I want the stripes to look hand painted and not perfect. I decide the width of the stripes on the front, top and sides. The width of the stripes can vary. I use the edges of the furniture for guidelines. It's best not to use a level to draw stripes on furniture because your floor might be uneven or the furniture not perfectly in line.

This chest was going in a nursery for a baby girl. My client wanted stripes, ribbons and flowers and told me the colours she wanted on the dresser to match her nursery decor. The base coat is white. I drew the stripes and painted with one coat of pink. Then, painted the ribbons and flowers. When I'm finished with a piece I always seal with two coats of a dull or satin sealer and a third coat on the top flat surface.



For this sofa table, I painted a tan base coat. Then, painted a denim blue on top of the tan, dry brushing so the tan would show through. Next, I drew and painted the turquoise stripes, dry brushing so the denim blue would shadow through. You can see I lightly sanded the edges, then sealed with two coats of clear sealer. On the table top I painted a third coat of clear sealer for extra protection.



My client asked me to paint black stripes on her antique cabinet.



When I purchased this pine armoire they told me it was from Stratford, England. The outside had been waxed, but the inside looked very old and had old blue shelf paper on the shelves. I didn't remove the shelf paper. On the outside I painted over the pine with a greenie beige colour. Next, I painted the tree then, drew and painted the stripes. I painted one coat of black and let the beige shadow through. A metallic gold paint was just the right touch for the black and beige colours. Then, two coats of clear sealer.



Now open in Stoke!

- All major brands available
- Colour mixing service
- Extensive selection of wallcoverings
- Wide range of decorating tools & materials
- Competitive prices
- Friendly, expert advice

For more information call: 0151 334 1237
or visit www.bromboroughpaints.co.uk

...we've got the North West covered!



Locations marked on the map: Carlisle, Kendal, Lancaster, Padiham, Preston, Wigan, Liverpool, Birkenhead, Bromborough, Chester, Northwich, Stoke, Shrewsbury, Frodsham (retail only), Cheadle Hulme, Trafford Park, Abergelle.



www.axusdecor.com



020 8204 1422



#captainchunk
#designedbydecorators



AXUS
décor



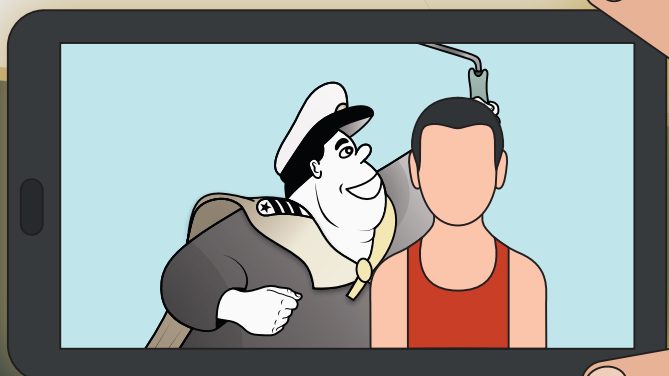
**Win £500
worth of Axus
Décor and Olfa
products!**

HOW TO ENTER:

1. **Follow** @axusdecor on Instagram.
2. **Take a picture** with Captain Chunk at Stand 27 at the P&D Show 2018.
3. **Post it** on Instagram with the hashtag #captainchunk and tag @axusdecor.

The winner will be announced on 28th Nov at 3pm!

The best pose wins!



We will be launching our new product line
at the P&D Show 2018, Stand 27!



NEW
PRODUCT
LINE

and

?



Buy the Limited Edition Pink OLFA L7AL Cutter
at the P&D Show 2018 (Stand 27) to help raise
money for Breast Cancer Haven!

In support of



All profits from the sale of the Pink OLFA L7AL Cutters at the P&D Show 2018 will be going to Breast Cancer Haven.

TAKE A STAND AGAINST BREAST CANCER



The Crown Paints Apprentice Decorator of the Year competition with the Construction Training Industry Board (CITB) is the longest running showcase of talent for painters and decorators and Crown Paints has sponsored it since 1979. Ahead of this year's national final at Birmingham's NEC, assistant judge Ben Deer, who won the competition in 2015, reveals what the judging panel will be looking for from this year's competitors.

Crown Paints Apprentice Decorator

behind the scenes with a former winner

The competition is open to any student or apprentice attending a recognised painting and decorating training course, run by an NVQ/SVQ accredited college or training provider. Those competing must first take part in one of 12 regional heats.

At each regional heat, the apprentices are presented with a design – created by the Crown Paints in-house design studio – which they're expected to create a scaled-up version of on an 8"x4" plasterboard. The design is based on the National Curriculum and changes every year, with this year's being based on the World Cup. Competitors are given five and a half hours to finish their scaled-up design.

Before the competition begins, the judges give everyone taking part a brief and go through the design. Judges are able to

answer questions and provide reassurance, but it all comes down to the competitors.

The eight top-scoring apprentices across the regional heats could secure themselves a place in the final and the chance to be crowned Apprentice Decorator of the Year.

What the judges are looking for:

The judges have developed an initial set of six marking criteria which they use to judge apprentices' work at each regional heat as well as the national final. The six criteria include setting out, decorating, wallpaper design application, numerals (using frisk film), using a sticker or transfer to accurately recreate the Crown Trade logo, and neatness of workmanship.

Clean lines and accurate cutting-in are important, and as well as technical accuracy, the competitors need to demonstrate a

commitment to high standards of work and a positive approach to the task in hand. As in the real world of decorating, finesse and time management are essential, so that's something else the judges really look out for. A tidy work station is also expected – points can even be deducted from competitors for an untidy space.

During the national final each apprentice is given 18 hours over three days to complete a new challenge, again under the watchful eye of the competition's judges. This year's finalists will be tasked with creating a scaled-up version of an intricate design devised for the final by Crown Paints' design studio.

For more information, please visit www.crowntrade.co.uk, email Info@crowntrade.co.uk or call 0330 024 0297.

Woodcare
Experts Since
1912



Home
ColourCare®

Bring colour to your furniture and flooring



Decorative Floor Varnish

- Highly durable protection
- Contemporary metallic finish
- Suitable for old laminate floors



Decorative Furniture Varnish

- Highly Durable
- Multi-surface Varnish
- Easy Application



Decorative Furniture Wax

- Metallic and Pearlised Finish
- Natural Wax Formula
- Resistant to Stains and Water

For more information on this new exciting range of woodcare products and stockists please get in touch

www.liberon.co.uk | 01797 367555



GROUP

A V33 Group Company

On test:

Cordless Impact Drivers

Years ago in another life I had the job of laying a protective layer of planking on to the load space of a small 3 ton truck. Handed a hand saw, screwdriver, box of screws and the planks and a request to have the job done by lunch. I ended up taking, with assistance the whole day and at the end of the day, the assistance and me sported a nasty blister on each right hand palm. I would have killed for one of these impact drivers. We sourced them from the normal suppliers and this is what we found.

Makita TD111D

Price	£169.99
Voltage	10.8
No Load Speed	NA
Max Torque	NA
Chuck Size	1/4 inch
Weight	1.4kg (drill only)

Comes in the traditional heavy duty high quality Makita plastic case with plenty of room for the charger and the spare battery. The reversible motor is brushless with the speed adjustable by adjusting the pressure on the trigger. Equipped with a belt clip and an LED work lamp. When the trigger is released the spindle brake act immediately stopping the spindle. Rubberised material covers the pistol grip and the top of the motor casing.



Erbauer 7485F

Only from Screwfix	£89.99
Voltage	18
No Load Speed	0- 2200
Max Torque	140N.m
Chuck Size	1/4 inch
Weight	1.7kg

A compact impact driver features a brushless instead of the old motor with brushes that wear out in time and spark a lot. The driver comes in a blown plastic case with a spare battery and a charger. Equipped with a belt clip and an LED light which lights up the work area, most useful in darkened corners. Motor speed is adjustable by differing the pressure on the trigger and there is a spindle brake which is activated when the trigger is released.



Erbauer 5012P

Only from Screwfix	£119.99
Voltage	18
No Load Speed	0 - 2600
Max Torque	120N.m
Chuck Size	1/4 inch
Weight	1.1kg

Supplied in a blown plastic case and an extra battery plus its charger. By differing the pressure on the trigger one can adjust the speed of the motor and like its stable mate there is a spindle brake. The motor is brushless so nothing to wear out giving the tool a longer working life. Comes with a belt clip and an LED working light.





FESTOOL

Copes with **high volumes** of dust.

Efficient, simple and reliable.

The new CT pre-separator with cyclone technology.

Large sanding areas and large quantities of dust place a great amount of strain on the main filter, which in turn affects the suction power. Mineral sanding dust from renovation sanders or long-reach sanders such as RENOFIX and PLANEX clogs the pores of the filter system and consequently reduces the suction power. The CT pre-separator separates and collects approx. 80% of the accruing quantity of dust before it reaches the mobile dust extractor. This takes the strain off the main filter and guarantees consistently high suction power throughout the entire work process.

For more information, go to www.festool.com

Draper 17132

Price	£46.35 (ex VAT) from Draper
Voltage	10.8
No Load Speed	0 - 2500
Max Torque	80M.m
Chuck Size	¼ inch
Weight	800g (drill only)

You have to buy this and the battery and charger separately so it all comes in cardboard boxes, the battery charger



(Stock Nos.16254) costs £17.20 (Ex VAT) and the battery will set you back also £17.20 (Ex VAT). You get a LED work light for those dimly lit areas and a belt clip. A small and lightweight impact driver.

Draper 89437 Stormforce

Price	£38.45 (ex VAT) from Draper
Voltage	20
No Load Speed	0 - 2800
Max Torque	180M.m
Chuck Size	¼ inch
Weight	1.2kg (drill only)

More powerful than its little brother and cheaper but like its little brother you have the bother of buying the charger and the battery separately. The charger comes in at £19.95 (Stock number 89425) and the battery is £27.45 (Stock number 89437). Owing to this you don't get a nice blown carrying case to keep the tool and its bits together.



Kielder from KWT-005

Price	£106.8 (Machinemart)
Voltage	18
No Load Speed	0 - 2250
Max Torque	200M.m
Chuck Size	¼ inch
Weight	1.4kg (drill only)

A neat compact driver with rubberised surfaces where one's hands would touch. Supplied in a blown plastic case coming complete with two batteries and a charger. Powered by a brushless motor so no brushes to wear out. Motor is reversible and one can control the spindle speed with the trigger. When the trigger is released a spindle brake stops it revolving



Environmentally Safer*
FORMULATION



Peelaway®

The Original Poulitice Paint Removal System

The safer, more efficient way to remove almost any type of paint or varnish in one easy application from a variety of substrates.



Paint Removal System 1

REMOVES UP TO 32 COATS OF PAINT AND VARNISH

containing Oil, Lead Polyurethane or water. Suitable for Wood, Brick, Stone, Concrete, Marble, Decorative Plaster, Cornices and Plaster walls. Also removes painted wall paper. Water-based Alkaline formulation.



Paint Removal System 7

REMOVES UP TO 20 COATS OF PAINT AND VARNISH

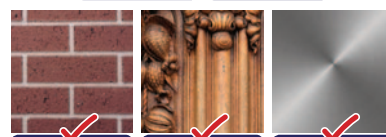
of Architectural, Domestic and Industrial Coatings. No dangerous fumes or toxic particles. Modern alternative for **Peelaway® 1**. Does not require neutralising on application.

✓ Architecturally Specified



✓
STONE

✓
ORNATE PLASTER



✓
BRICK

✓
WOOD

✓
METAL



Exhibiting at
The National Painting & Decorating Show 2018
27th-28th November
Live Demonstrations & Free Samples Available

Stand 24

Barrettine
TRUSTED BY THE PROFESSIONALS

St. Ivel Way, Warmley, Bristol BS30 8TY.
T: 0117 960 0060 F: 0117 935 2437
E: sales@barrettine.co.uk www.peelaway.co.uk

* Environmental claim compares to shot blasting, abrasion and heat guns where toxic paint particles can be released into the environment.



Red Devil

Premium lightweight filler - *no sanding required*

- Spreads easily
- Paintable in minutes
- Won't shrink or crack
- Interior and exterior use
- Cleans easily with just water



www.ciret.co.uk
+44 (0)2392 457450

On test:

Vauxhall Vivaro Van L1 1.6DTi Biturbo Start/Stop



by David Stokes

As usual I am taken aback just how great to drive the latest vans are. The multi position driving seat is a great asset to one's comfort as is an easily adjustable steering wheel. Let's face it, these are the items one touches when driving and those in the right places matter a lot.

I remember in another life driving horrors like the Commer 15CWT van and the Morris J2 and J4 vans where, after a days driving your back could almost go into spasm owing to 'fit all' seats and the almost flat steering wheel.

You get a choice of two passenger seats in the front or a single more comfy seat. The latter is good if you and your mate are not driving for long journeys when your passenger would thank you for the bigger seat. However, if you only drive locally and the need for an extra bod is a need then

stay with the three seat setup.

Back to the nice new Vauxhall, unlike many vans on the market this one is manufactured in the UK. Van drivers are a nationalistic lot and will like the fact it's a British made van. The Vivaro is car like to drive with the added benefit of a heightened seat position. Visibility is excellent and the large door mirrors with two mirrors in each side, the lower a wide angle so you get to see things almost alongside.

You have a choice in the Vivaro of two lengths and two heights L1 and L2 and height H1 and H2. Also there are three basic body types, panel van, double cab and combi bus plus a platform cab for

those specialist needs like a cherry picker.

The front 'face' of the Vivaro certainly has some chutzpah and attitude and shows a lot of personality. In the cab one soon realises it's designed for the driver's benefit with a host of cubbyholes to take all the driver's stuff. Good sized door pockets will swallow a 1.5 litre water bottle, there's a shelf over the





MIRKA



**GETS YOU
CLOSER**

**FOR
PERFECTION.**



**IMAGINE
THE PERFECT
SURFACE.**

Mirka® DEOS

Thanks to the new Mirka® DEOS electric sander, you can obtain that flawless end result easier and quicker than ever before. By getting you closer to the surface, we bring your sanding experience to a completely new level - you will never go back to hand sanding again. Mirka® DEOS boasts smart Bluetooth technology with an integrated vibration sensor allowing you to monitor vibration levels while sanding.

For further information or to arrange a demonstration,
please contact Customer Services on 01908 866100

www.mirka.co.uk

windscreen line where folders can be placed as well as one's lunch. On top of the dash is a place to place documents and most importantly there are three cup holders. A glove locker can be found in front of the passenger seat as normal.

Controls are in the normal place with the handbrake between the driver's seat and passengers.' The gear stick is in the dash allowing the driver to traverse across the cab if it was convenient to park up against a wall on the driver's side.

In 2014 the old 2 litre diesel unit was replaced by a new 1.6 CDTi motor. Even though the new engine was smaller it offered more power and better economy. There are four versions of the same unit, the entry level delivers 89bhp and gives 43.5mpg. the 113BHP version gives identical economy figures whereas the 118bhp will give you 47.9mpg. the big daddy version affords you 138bhp but you lose 1MPG to 46.3. Although the power unit is smaller acceleration would not shame a car and the motorway max is soon achieved and if not careful, exceeded!

Basic 'On the Road' Price

As Tested

£26,475.00

Specification:

Engine Type	4 Cylinder Diesel
Capacity	1598cc
PS	145 @ 3,500rpm
Torque	340Nm @ 1,750rpm
Gearbox Transmission	6 Speed Manual

Performance

Fuel Consumption

Urban	39.8 mpg
Extra Urban	50.4 mpg
Combined	46.3 mpg
Brakes	Discs all round + ABS
Steering	Power assisted

Dimensions:

Overall Length	4,999mm
Overall Width	2,470mm (Including Mirrors)
Height	2,744mm
Wheelbase	4,332mm
Load space length	2.937mm
Load Space Width	1,765mm
Load height	552mm
Load area	5.2m3
Max Payload	1,017Kgs
Tyre Size	225/65



Covers Everything!

National Painting and Decorating Show 2018

RICOH ARENA, COVENTRY 27/28 November

Go to www.paintshow.co.uk for free tickets or call 020 8645 2433



tesa® tapes provide the perfect finish

In tesa's long association with the professionals in painting, decorating and associated businesses, one thing has always been paramount – the ability to deliver a precise finish. High quality and high performance tools are essential for the professional tradesman.

That's why tesa's Precision Mask® range was developed. The company not only understands, but responds to the professionals' need for quality. A painter who can deliver high quality work on time will always stay ahead of the

competition. Painters and decorators need to produce perfect results quickly and without the risk of having to redo work – which costs time and money.

To get the right results the first time, it is key to select the right tape for the job.

Masking tapes for painting and decorating must be able to cope with a number of factors. They must be easy to apply and bond reliably to surfaces, so there is no risk of paint

creeping underneath, should remove cleanly without leaving adhesive residues or teaming, and must provide a razor-sharp paint edge for a professional finish.

The quality of the finish is determined by the type of masking tape used. If a precise edge is required, tesa has a range of extremely thin masking tapes made from a Japanese Washi paper. Tapes in this range include **tesa® 4334 Precision Mask® Indoor** and **tesa® 4333 Precision Mask® Sensitive**.



tesa® PROFESSIONAL

FOR RESULTS TO BUILD YOUR REPUTATION ON.

Download the Professional Decorator App:

GET IT ON Google Play | Download on the App Store

RAZOR SHARP PAINT EDGES <
NO PAINT BLEED <
SAVE TIME – NO CUTTING IN <

tesaUK **tesaUK** **tesaUK** **@tesaUK_tape** **tesa.co.uk/craftsmen**

tesa® 4334 Precision Mask® Indoor consists of an extra-thin Japanese rice paper backing, with an adhesive formulation which allows for **easy removability for up to 6 months** indoors, a precise razor-sharp paint edge and no paint bleed.



tesa® 4333 Precision Mask® Sensitive is a low tack tape perfect for paint work on delicate surfaces such as wallpaper and freshly painted walls. It is extremely gentle yet still sticks firmly and prevents paint bleed without damaging surfaces, providing **14 day residue-free removal** and giving a razor-sharp edge to speed up paint jobs.



THE NATIONAL PAINTING AND DECORATING SHOW 2018

27th-28th November

Ricoh Arena, Coventry

Come and visit us on **Stand 55**



Johnstone's All-in-One paint

with stain blocking

Covering stains can be tough. Not only is it a time-consuming task, often requiring multiple layers of product and hours of drying time, but the results can be short-lived if the correct products aren't used. Traditionally, if you haven't used a Stain Blocking Primer, unwanted stains can reappear through the paint layer – meaning either additional work is required or an unsightly mark is left behind.

When it comes to blocking stains, Johnstone's Trade has been working to bring an exciting innovation to the market. Megan Esmond of Johnstone's Trade, explains more.

Here at Johnstone's Trade, we are always reviewing our product offering and developing our range based on customer feedback. We often host in-depth interviews with key customers and the wider market to gather insights, and use these to ensure we are providing a high performance, high quality solution to meet the needs of our customers.

Recent research has proved that encountering persistent stains on the job is one of the most common issues painters and decorators are faced with on a regular basis. Stains including smoke damage, water damage and nicotine staining can be difficult to cover and extend time on the job. Traditionally this has meant applying a stain blocking primer before a top coat.

To tackle this issue, at Johnstone's Trade we have been working on a brand-new product that helps cut down time on these types of

jobs: StainAway, the all-in-one wall and ceiling paint that's guaranteed to tackle the toughest of stains and leave a durable, flat matt finish.

StainAway contains Stain Blocking Technology which permanently isolates and covers stains. Cross-linking polymer compounds in the paint layer ensure complete coverage and prevent future penetration through the paint layer. The product also offers a class 1 scrub resistance, making it possible to achieve a highly durable, professional flat matt finish that resists marking and scuffs. It comes in Brilliant White and can be tinted to all pastel colours, including shades from the new, trend-led Voice of Colour palette.

StainAway is one of our most innovative products to date – and that's because of feedback from professional painters and decorators. To ensure that we remain at the forefront of market research and quality, we



want to keep the conversation going and welcome your feedback on our products.

In-line with this, we've been asking our customers for their thoughts on StainAway. Here's what they had to say after trying it:

StainAway Matt is easy to apply with either brush or roller. It has superb coverage, and it really does cover and block stains. We recently used StainAway on a brown, nicotine-stained ceiling. After just two coats, the ceiling was so bright, with no traces of the nicotine bleeding through. From now on, StainAway will always be used on our jobs.

Aston Mills, EA&AJ Mills

I'd rate this product 5 stars out of 5. Fairly priced, easy to use and does what it says on the tin. Johnstone's Trade has nailed it!

Paul Davis Church, PHS Property Maintenance



The premier trade and employers' association for the painting & decorating industry in the UK

Look at these great member benefits...



Support & Growth

- Legal Support
- Mediation & Arbitration
- Employment
- Tax Support
- Product Information
- Training
- Technical Advice



Market Profile

- Free Profile on Website
- Certification of Quality
- Competitions
- Representation
- A Voice for the Industry



Knowledge & Skills

- Legal Assistance
- Industry Standard Templates
- Insurance
- Tax Advice
- Health & Safety and Risk Assessments
- Employment Support
- Helplines
- Apprentices and Training
- Mediation and Arbitration
- Free Member Magazine



To join The Painting & Decorating Association or for more information please contact us:

W: paintingdecoratingassociation.co.uk

E: info@paintingdecoratingassociation.co.uk

T: 024 7635 3776



www.paintingdecoratingassociation.co.uk



Crown takes clean to the extreme

Crown Trade has extended its popular Clean Extreme range. The water-based range offers three quick drying and low odour solutions to creating clean and hygienic surfaces and features Clean Extreme Stain Resistant Scrubbable Matt, Clean Extreme Mould Inhibiting Scrubbable Matt and Clean Extreme Anti-Bacterial Scrubbable Matt. For projects when surfaces to be clean with a bit of sheen, the full Clean Extreme range is also available in a high performance, stain-resistant, durable and washable Acrylic Eggshell finish.

Ideally suited to high traffic areas such as hallways and corridors, Crown Trade's Clean Extreme Stain Resistant Scrubbable Matt has a durability level of 10,000 scrubs.

For areas prone to condensation such as kitchens and bathrooms as well as void properties, Crown Trade's Clean Extreme Mould Inhibiting Scrubbable Matt can offer long lasting protection from unsightly and unhygienic mould.

For surfaces that need to be hygienically clean, such as healthcare facilities, food preparation areas or children's play rooms, Crown Trade's Clean Extreme Anti-Bacterial Scrubbable Matt provides a high quality anti-bacterial finish, enhanced through the use of the independently tested SteriTouch® silver ion technology which protects against the growth of bacteria. As well as being stain resistant, Clean Extreme Anti-Bacterial Scrubbable Matt has been specifically formulated to withstand rigorous cleaning and scrubbing to give extra peace of mind.

Fenwick & Tilbrook introduces Claypaint

Fenwick & Tilbrook, has launched Claypaint – a finish developed specifically for plastered interior walls and ceilings. The paint is ideal for period properties with lime plaster walls, which require moisture to be let out.

A water based paint, it has a formulation to provide a highly breathable, yet durable matt surface. It is available in the entire spectrum of Fenwick & Tilbrook's 120 colours but can also be paint matched to virtually any shade.



High Tech Safety Boots For The Winter

With a focus on comfort and S3 safety, Solid Gear's Falcon and Apollo boots are robust boots you can get for the winter months. With durable uppers these heavy-duty boots will keep your feet dry and insulated so you can work comfortably in the roughest conditions on site. What's more, the new oil- and slip resistant Vibram soles deliver outstanding grip on snow and ice – even at low temperatures.

The Apollo has a premium full-grain impregnated leather upper while the Falcon is a mix of full grain leather and a Cordura Rip Stop fabric.



New shades from F&B

Farrow & Ball has introduced nine rich new paint shades to its colour card. The new colours which range from an exotic pink and a deep red, to a soft off white and down to earth blue have been carefully chosen to rebalance the Farrow & Ball colour card, the new additions will replace nine existing shades to preserve the curated palette of 132 paint colours.





THE ULTIMATE PRO!

High Strength Adhesive | Fast Skin Sealant | Paintable Filler

Works in The Wet & Dries Underwater



www.hippoproducts.co.uk



Coo-Var's New Anti-Slip Step & Ramp Paint



Anti-Slip Step & Ramp paint is the latest extension to the Coo-Vars floor paint range. This new step and ramp coating is used to provide a durable and hardwearing anti-slip surface for use on walkways, ramps and steps. Suitable for concrete, wood, tarmac, stone & brick work internally and externally.

Although this is a decorative and durable floor paint, it also encompasses the safety aspect with its fine aggregate. Independently tested to BS7976-2 it has a low risk slip risk in wet and dry conditions. Step & Ramp Paint is easy to use, quick drying and is easier to clean than more than a heavily aggregated finish.

Pressure boosted hopper gun from Graco

The TexSpray FastFinish pressure-boosted hopper gun system is engineered to deliver all texture finishes 6X faster than traditional gravity-feed hoppers so professionals finish fast with less fatigue.

The small and portable FastFinish maximizes material and airflow with a high-output, continuous flow air compressor and pressurized spray gun. This makes it the ideal solution for smaller texture jobs in a wide variety of applications and materials such as smooth touch-up, EIFS, decorative finish and acoustic renders.



Smith & Rodger launches Blockade Shellac Sealer Primer



Smith & Rodger has launched its newest performance product – a specialist shellac sealer primer. Blockade has been developed as a multi surface cleaner easily that will cover the toughest stains and provide a base that can be overcoated with most paints.

Blockade has been rigorously tried and tested by professional painters and

- permanently kill stains and odours
- seal knots
- cover damage from water smoke and mould

Available in 1L and 2.5L, Blockade is also quick drying, therefore can save time on jobs that require multiple coats or need to be quickly overcoated with emulsion. Dries in 15 minutes, can be overcoated in 45 minutes.

All purpose primer and finish coat

British manufacturer of high quality protective coatings Bradite is set to take on the specialist paint market with the launch of a new multi-purpose product that is suitable for use on all surfaces.

Bradite 'One Can', the first all-purpose water-based primer and finish in one can is now available at stockists This product is an interior and exterior, anti-corrosive, quick drying, low odour, low VOC, primer, undercoat and finish. It offers the decorator a single pack, direct-to-substrate paint that

provides stain locking and adhesion properties.

One Can is easy to apply and is touch dry after one hour and re-coatable after four. There is no need for buying additional primers and undercoats, 'One Can' can be used as both a priming and finish system, so each job can be completed in double quick time. The product is also compatible with all water and oil-based finish coats. No longer will three different cans be required and its superior adhesion properties means 'One



Can' may be used with confidence on all manner of substrates.

It will be available in eggshell finish in the full BS and RAL colour range.



**STRONGER
THAN
STAINS**



Johnstone's StainAway. Stronger than stains.

Johnstone's StainAway is an innovative all in one wall and ceiling paint that isolates even the most persistent stains in one coat. The Stain Blocking Technology permanently isolates and covers stains including smoke damage, nicotine damage and water stains, saving time by acting as a primer and finish in one. Visit www.johnstonestrade.com to find out more.



PAINT TO BE PROUD OF



Snickers new waterproof jackets

You can count on year-round comfort and protection with Snickers Workwear NEW AllRoundWork Waterproof Jackets. With lightweight and heavier-duty designs and styles for professional tradesmen and women, these jackets are 100% waterproof. The insides are fully sealed from the worst of the weather and every seam is taped or sealed. Even the pockets and cuffs are specially designed to keep the weather out and dry warmth in.

Paints for saunas and steam rooms

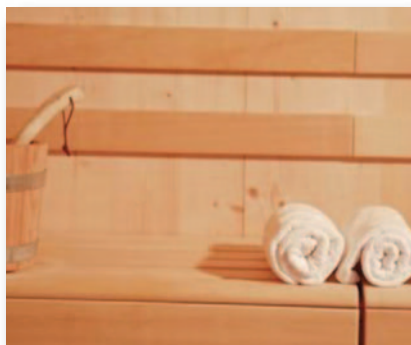
Designed to meet demanding steam room and sauna environments, the Satu range of coatings from TeknosPro provides protection for the integral benches and timber surfaces.

SATU LAUDESUOJA is suitable for untreated and previously oil treated wooden surfaces. It offers protection for benches in steam rooms and saunas as well as wooden table tops and panels. The clear, colourless and odourless product ensures that the natural colour of wood is maintained.

Both SATU SAUNASUOJA and SATU SAUNAVAHA can be used for the treatment of wall and ceiling panels in steam rooms or saunas as well as washrooms and after-sauna lounges.

SATU SAUNASUOJA, a waterborne thixotropic protection for wooden surfaces, is clear and does not change the natural colour of wood although, using the Teknomix system, it can be tinted to translucent shades. The product may be thinned with water if the shade seems too intense.

SATU SAUNAVAHA is a waterborne protection coating containing natural wax for wooden surfaces. The waxy coating enhances the wood grain and is available in clear colours.



Pre-separator with cyclone technology from Festool

Large quantities of dust and chips – which accrue when sanding dry mortarless construction filler or working with a router, for example – can clog the main filter of the mobile dust extractor and reduce its suction power. The new CT pre-separator has proven itself to be an ideal solution, since it separates and collects up to 95% of dust before it reaches the mobile dust extractor. This takes the strain off the main filter and guarantees consistently high suction power for a longer service life of the mobile dust extractor.



Grand Illusions adds three new colours

The new additions - Oyster, Conifer, and Bergen – are a nod towards emerging interior trends and popular colour palettes. Inspired by the authentic historical chalk paint recipes of the 18th century, the Vintage Paint range is made with natural earth pigments, clay, a very small amount of acrylic medium, and has over 46% chalk content which is one of the highest on the market.





Tool Tray

Perfect when working at height

Solid hooks fit the scaffolding, ladder or platform

Ample space for paint and/or tools



With compartment dividers for flexibility

Metal handle for stable lifting, hoisting and hanging

Fill with washing-up liquid and water for prepping



Watch this and more innovative tools on stand 4 at the P&D show
27th and 28th November 2018 Ricoh Arena Coventry

Available from:
Johnstone's Decorating Centres

GO! Paint
WWW.GO-PAINT.COM

TRIMACO X•BOARD PAINT + REMODEL

**HEAVIER.
TOUGHER.
THE TRUE
ORIGINAL.**



SPILL BLOCK®
LEAK RESISTANT PROTECTION

MORE THAN
2.5X
THICKER THAN
BUILDER'S PAPER



X•Board Paint + Remodel is breathable to allow floors to continue the curing process. This easy-to-use painter board lays flat when rolled out and our Spill Block® technology ensures no paint, mud or water will get through to your surface. X•Board will last for the endurance of the job and is proudly made in the USA.

TRIMACO

Manufacturers of KleenEdge Low Tack Painting Tape
01746 218091 | www.trimaco.com

Ciret Ltd

UK distributor for Trimaco products
02392 457450 | www.ciret.co.uk

AVAILABLE FROM YOUR LOCAL DECORATORS MERCHANTS