

The Professional Painter & Decorator



Guard-Coat

coo-var®

PAINTS, PRIMERS AND SPECIALISED COATINGS

Guards against the spread of bacteria
including MRSA and E.Coli using Silver ion
technology that lasts the life of the paint!



01482 328053

www.coo-var.co.uk





AkzoNobel

THE
COMPLETE
PAINT
RANGE FOR
ANY JOB.



 **JOB DONE!**

The Professional Painter & Decorator

INCORPORATING THE PAINTING & DECORATING JOURNAL

News 2

Patinated brass- Verdigris 8

Metallics are a favourite with designers now as Cait explains and demonstrates.

Coo-Var's two-pack antimicrobial – Guardcoat 10

Being two-pack, Guardcoat is extremely hardwearing as well as tackling microbes.

Taking a fresh look at colour 14

Kathryn Lloyd, colour specialist from Crown Paints explains, helping customers gain colour confidence is a great way for trade decorators to secure new business.

Breathing new life into Georgian windows 18

When the owners of the Grade II listed Wall Hall in Wall, Staffordshire, wanted to breathe new life into their Georgian windows, they turned to contractor McWilliams for help. QI masking tape and Festool helped in this renovation.

External jobs – all year round? 22

Tim Hope of Johnstone's Trade, shares details of the latest rain resistance technology that is set to allow painters and decorators to confidently schedule exterior projects all year round.

Time to offer a decking, fencing or garden furniture service? 26

Sean Thompson, technical consultant at Sadolin, explores the options available for a finish to showcase natural woodgrain or a contemporary colourful style for decking, fencing or garden furniture.

Decking: an opportunity? 30

When quoting for external work, why not offer to revive and restore the decking as part of the project or protect it if it is relatively new? Liberon's Marketing Manager, Dominic McInerney, here explains how the company's Decking Oil makes this sort of work easy, and how it solves several challenges.

Crown Paints' 40th Apprentice Decorator of the Year 34

Crown Paints Apprentice Decorator of the Year competition is now held in association with SkillBuild and the Construction Industry Training Board (CITB) as part of the national WorldSkills show and the bi-annual global WorldSkills competition which gives apprentice decorators the chance to compete on an international stage.

On test: site radios 40

On test: Volkswagen Transporter Combi Highline 2.0 TDI 44

Marketplace 48



The National Painting & Decorating Show
Nov 26th - Nov 27th 2019

Editorial David Pescod
Advertising Richard Daynes

Published by
DPA Publishing Ltd
Stoney Lane Barn
Stoney Lane
Bovingdon
Herts HP3 0LY

Editorial: 01303 238002
Email: ppd.editorial@gmail.com

Advertising & Subscriptions: 01442 832715

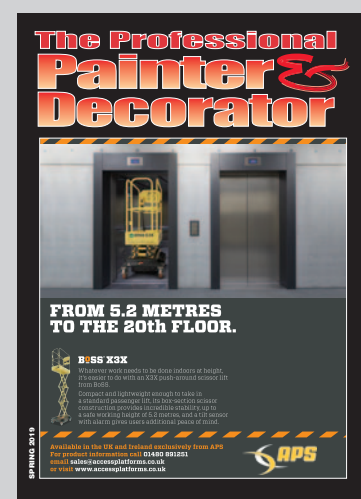
Production The Orange Design Group

Printed by Wyndeham, Roche
Subscription £18.00 p.a. (in the UK)

Subscribe to the

The Professional Painter & Decorator

only £18 per year
(including postage)



It's the only way of ensuring you receive your copy

Published 4 times per year - February, May, August & November

Make cheques payable to
DPA Publishing Ltd

Orders can only be accepted with payment

Send to:
DPA Publishing Ltd
Stoney Lane Barn, Stoney Lane,
Bovingdon, Hertfordshire HP3 0LY

SUBSCRIPTION

Name: _____

Company: _____

Address: _____

Postcode: _____

Email: _____

WernerCo guide to new safety standards

With new safety legislation coming into force for the ladder industry in 2019, WernerCo has published a handy new guide to help customers understand these changes.

EN131 has been brought in to provide a harmonised standard, which will cover all types of portable ladders including those for professional and non-professional use.

WernerCo's 'EN131 - A Guide to UK Ladder Standards' covers the changes to the legislation and goes into comprehensive detail on what it means for customers and for the market, and how users can identify products that are compliant with EN131.

Ladders certified to the withdrawn British Standards BS2037 and BS1139, often referred to as Class 1 and Class 3 will no longer be available, although stocks of products in the market place will continue to be sold through.

The guide is available to download online <https://www.wernerco.com/eu/en/literature/en-131> or is available as a hard copy from WernerCo.

To find out more information on the range of access solutions from WernerCo visit www.wernerco.com



Graco kit for Peterborough decorators



Janmar Decorative Solutions of Peterborough has received a Graco GX21 Paint Sprayer as part of a prize draw organised by the Painting and Decorating Association (PDA).

Members of the PDA who renewed their 2019 subscriptions before the end of February were entered for the chance to win.

Martin Webb and Jane Lilley, of Janmar Decorative Solutions, were chosen at random and were presented with the Graco GX21 by Neil Ogilvie, Chief Executive of the PDA, and Andrew Bullock, who is responsible for the sales and marketing of Graco systems in the UK.

Optimised for interior renovation and new construction, the GX21 features an easy to carry frame allowing paint to be sprayed directly out of the bucket, making it the ideal wall paint unit.

Andrew Bullock said: "The GX21 retails at £1,100 and we've sold around 28,000 in the last three years across Europe.

"It was a major change for us to sell a 240 volt unit and we've had unbelievable uptake on it because it's a professional machine, but so light and easy to carry around.

29th Brewers Decorators Centre within the M25

Brewers has opened their 173rd Decorator Centre, in Barking, bringing the total number of stores within the M25 to 29. Plus to meet the busy schedules of decorators working in London, the store is open at 5:30am, Monday – Friday and also has a 24/7 lock box pick up facility for extra convenience!

The new East London store is located in The Invicta Centre on Alfreds Way, close to Toolstation and Howdens.

A wide range of paint brands are available including Albany, Bradite, Crown, Dulux, Johnstone's and Zinsser. In addition, customers will be able to pick up a selection of designer brands such as Sanderson, Farrow & Ball and Little Greene. In fact the branch has a wide range of tinting machines including Sikkens, making Brewers in Barking able to offer one of the most extensive colour mixing services in the country!

Brewers
DECORATOR CENTRES



170 STORES NATIONWIDE

Find your nearest branch at Brewers.co.uk

Opening Hours: **Monday - Friday 7.00am to 5.00pm**

Saturday 8.00am to 5.00pm



Valspar launches trade range

Valspar is the number one brand paint in the USA and now the company has launched a trade-grade range of paints for the UK trade.

At the heart of the Valspar Trade range is Tintable Matt and Silk paint, an advanced acrylic emulsion with excellent opacity, giving good coverage, application and a tough and durable finish. Valspar 2-in-1 Paint and Primer technology allows good adhesion, optimising the final paint appearance.

As one of the world's leading paint companies, Valspar offers unrivalled mixing options and tintability, either from 2,000 pre selected colours or a colour chosen from over 2 million options. Valspar Trade matt and silk paints are available in 1L(matt only), 2.5L, 5L and 10L tins nationwide.

The Valspar Trade range also includes water and solvent-based Trade Wood and Metal Paints, in three sheens – eggshell, satin or gloss – plus a selection of trade-grade primers and undercoats.

David Williams 1948-2019

David joined Crown Paints at the age of 19, later becoming a Regional Sales Manager. In 1998 David joined Bromborough Paints as its Trade Sales Manager. At that time Bromborough Paints had three wholesale depots with just one trade outlet at Padiham. Over the next 20 years David was integral to the acquisition of further businesses including Kendal Paints. Eleven more branches were opened on new sites bringing the total number of outlets to 17 from Shrewsbury to Carlisle. David could be constructively combative in negotiating with suppliers to the benefit of Bromborough Paints and after 50 years in the paint industry will be sadly missed by both staff and management at Bromborough Paints.



Crown's Clean Extreme product performance guide

Crown Trade has launched a new product performance guide to support its recently expanded Clean Extreme range of high performance water-based paints.

The Clean Extreme range features a trio of high performance paints - Clean Extreme Stain Resistant Scrubbable Matt, Clean Extreme Mould Inhibiting Scrubbable Matt and Clean Extreme Anti-Bacterial Scrubbable Matt. For projects requiring a sheen rather than matt finish, the full Clean Extreme range is also available in a high performance, stain-resistant, durable and washable Acrylic Eggshell finish. Each product within the range has undergone rigorous independent scientific testing to strict industry standards and the new guide explains all about the tests as well as the results.

Packexe celebrates 30 years with £30,000 double giveaway

Packexe is celebrating 30 years as the industry leader by giving away £30,000 in holidays and £30,000 of Packexe products to its customers. Golden Tickets have been hidden in hundreds of rolls of Packexe, stocked by distributors Travis Perkins, Dulux Decorator Centre and Johnstones, as well as products available directly from Packexe.

Packexe is used by tens of thousands of builders, painters, decorators and DIY devotees. Its products, including Packexe Carpet Protector Film, Packexe Hardfloor Protector and Packexe Handy Wrap, have also been used to protect key national icons, including wrapping Concorde, during work at the Aerospace Bristol Museum, and protecting Exeter Cathedral's historic collection of books during building work.

TRIMACO X•BOARD PAINT + REMODEL

HEAVIER.
TOUGHER.
THE TRUE
ORIGINAL.



SPILL BLOCK®

LEAK RESISTANT PROTECTION

2.5X
THICKER THAN
BUILDER'S PAPER



SPILL BLOCK®



BREATHABLE



X•Board Paint + Remodel is breathable to allow floors to continue the curing process. This easy-to-use painter board lays flat when rolled out and our Spill Block® technology ensures no paint, mud or water will get through to your surface. X•Board will last for the endurance of the job and is proudly made in the USA.

TRIMACO

Manufacturers of KleenEdge Low Tack Painting Tape
www.trimaco.com

Ciret Ltd

UK distributor for Trimaco products
02392 457450 | www.ciret.co.uk

AVAILABLE FROM YOUR LOCAL DECORATORS MERCHANTS

X-TRA protection for community care home



A trio of Sandtex products have been used to refresh the exterior of a care home in Winchester. St John's Winchester is a charity which cares for the elderly through a combination of almshouses and community support, as well as caring for those with dementia at its nursing home and day care facilities.

With listed building status, one of the key areas of consideration for the refurbishment of St John's House Winchester was ensuring the colour scheme – shades of white and black – met the approval of Winchester City Council, as well as the need for products to protect the exterior for years to come.

Based on this criteria, three Sandtex products, supplied by Southampton's Crown Decorating Centre, were chosen for the project: Sandtex X-Treme X-Posure®, Sandtex Flexigloss X-Tra and Sandtex Metalgloss X-Tra.

Sandtex X-Treme X-Posure, which has 20-years proven durability is microporous – making it ideal for the listed building's substrate which needs to breathe. Quick drying and with excellent adhesion, X-Treme X-Posure will ensure the building remains protected against the weather, long term.

Sales of water-borne paints surge in 2018

Dulux Trade is reporting a significant shift in buying behavior from trade professionals with sales of water-borne paint up and solvent-borne paints down across the total paint market in 2018.

The latest market data to the end of 2018 shows a rise of 13 per cent in the sales of water-borne paint year-on-year twinned with a decline in sales of solvent-borne paints by 3 per cent.

The surge in sales reflects the significant improvements to water-borne formulations that have been achieved by the research and development teams at manufacturers, including AkzoNobel, as they identify sustainable solutions that don't compromise on the quality of the finish.

Karen Wilkinson, Dulux Trade Lead at AkzoNobel, explains: "The science and technology behind water-borne paints has come a long way in the last few years. Now, our focus is on upskilling the trade to be able to get the best out of these products when they're on the job.

"Commercial specifiers and homeowners are becoming increasingly aware of the sustainable alternatives that are available to them when specifying for a project - this shift is going to continue and the trade needs to be ready."

Dulux Academy's third birthday

Since its official launch in March 2016, the Academy has welcomed more than 5,500 course attendees and to mark the milestone, supplier partners including Mirka UK, Graco Paint Sprayer, Tesa UK and Corona Brushes, as well as Dulux Select Decorators, attended an open day to learn more about the Academy journey and on trend courses offered.

Dulux Academy Skills Development Consultant Matt Gray demonstrated the process of marbling, showcasing the skill and expertise required to create a marble finish using water-borne paints. Bookings for craft courses such as marbling have seen a 500% rise year on year, with Gray explaining that the skills offer a point of difference for decorators in a competitive marketplace.

Gray said; "Taking inspiration from natural marbles and using water-borne glazes and colourants, decorators can create an impressive range of faux finish marbles enabling them to offer an exclusive finish for their customers."

Dulux Academy, which now delivers training at 10 UK venues through a partnership with colleges across the UK, has achieved approved status from City & Guilds and the Construction Industry Training Board (CITB) and has been recognised in the industry for 'Excellence in Training'.



OUR MOST VERSATILE WOODSTAIN

Offering a truly versatile woodstain solution, Sadolin Classic can be used on a wide variety of wooden surfaces, both interior and exterior. That's why it's at the very core of our range. Whether it's used alone or alongside another product, it provides an exceptional finish, each and every time.



SUPERIOR WOOD PROTECTION

Patinated Brass - *Verdigris*

Cait is decorative painter working throughout UK and teaching from her studio in Perth, Scotland. You can see her work and connect with her on social media; Twitter and Instagram - @paintycait or Facebook - <https://www.facebook.com/carteblanchedecorativepainters/>.

Videos can be found on the Whitson's YouTube Channel

Metallics have been a great favourite with Interior Designers for a few years and this year there's more interest in patinated metallics. These are fun finishes to do and are a great finish over Anaglypta, Lincrusta or other textured surfaces. We've also done finishes like this on smooth surfaces, furniture and baths to great effect but textures are more forgiving and do a lot of the work for you.

Verdigris occurs on Brass, Copper and Bronze and is a reaction caused by acids on the metals. Copper is the colour that is most often carried out as a faux finish so I thought it would be nice to show this finish in a different metal.



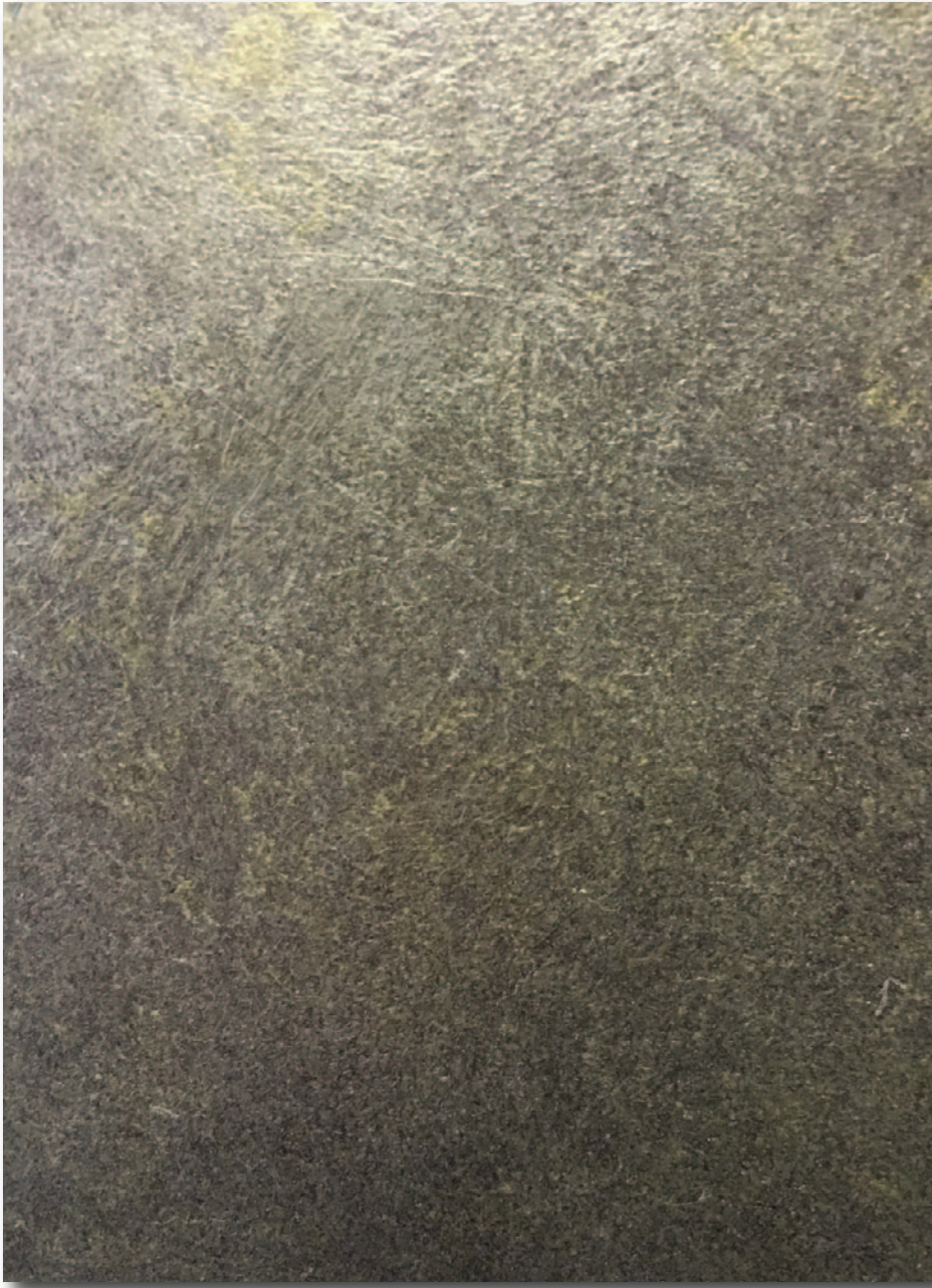
Depending on the substrate, we would normally start with a coat of tinted primer (tinted grey), then our favourite metallics are Roberson's Liquid Metals. The Liquid Metals are water based and very quick drying. Over a textured substrate you lose the roller marks you get very easily with metallics, over a flat area then we stipple using "The Woolie" which is shown in the picture but you could use a stippling brush.

Basecoat - Blackened Bronze

Over the Blackened Bronze I sponged on two colours – Renaissance Gold and Brass. The Brass on its own

looks too green but the combination of all 3 gives a great aged metallic look, with the blackened bronze adding depth. It's very hard to photograph the finish on the texture so I have shown it done on a flat sample too so you can see what you are aiming for.

The patina colours are next; you could make them bluer or greener than I have. To create the most realistic patination look you want to have contrast between the patination colours being as matt as possible and have this play off the glitz of the metallic. We use General Finishes Milk Paint because a/. it works b/. they have good colours for patinating and c/. it's a high adhesion product so will



work over any product. We use Persian Blue for a bluer look or Patina Green for a greener one. In this instance we've used Persian Blue. I adulterate this colour to get 2 different tones and thin them to a single cream consistency. If this is to be carried out on a high traffic area, thin with a matt varnish rather than water -

Tone #1 - Persian Blue itself

Tone #2 - Persian Blue and Antique White added to make it very pale.

I use a natural sponge to work these

onto the surface, sponging and in this instance dribbling the colours over the surface. I then remove blot with a bit of cheesecloth.

You can get different looks with different metallics and playing with tones of Verdigris type colours. Have fun!

Robersons Liquid Metal and General Finishes Milk Paint are available from <https://www.goldleafsupplies.co.uk/>

Cheesecloth and "The Woolie" are available at <https://walleffects.co.uk/>



Coo-Var's two-pack antimicrobial -



Being two-pack, Guardcoat is extremely hardwearing as well as tackling microbes.



Microbes are everywhere, on every surface we touch, on the food we eat and even the air we breathe. For most this isn't an issue, it's a fact of life and our immune systems handle the threat; for some however – personally or professionally, these invaders can cause major issues.

The global antimicrobial coatings market is predicted to reach over \$4.4 Billion (£3.38bn) by 2022, fuelled by the ever-increasing need for cleanliness in a range on environments. Research has demonstrated that on a typical surface, bacteria can not only survive, but multiply, over a period of 24 hours - in hygiene critical environments such as schools, hospitals, care facilities and kitchens this could translate into a risk to life. When coupled with the increasing antibiotic

resistance and reports of decreased effectiveness of cleaning products, the end result is users searching for alternative solutions.

Guardcoat is a Two-Pack antimicrobial coating; which is proven to be resistant to E-Coli and MRSA. This paint harnesses silver ion technology – an antimicrobial active ingredient that remains active for as long as the lifecycle of the paint, and in some cases extends it by fighting the bacteria that would typically degrade the paint film.

Due to the high-build Two-Pack nature of the paint, it is extremely hard wearing, suitable for situations where furniture may be dragged, trolleys or trucks may run over the surface or cleaning chemicals may be used. Making it ideal for environments such as



ROTA!

kana

masq

prep

◀ Ideal for covering large areas quickly

◀ Suitable for interior and exterior use for up to 90 days

◀ HDPE film with paper tape

◀ Extra thin for extra flat edges and particularly good in wet conditions

Available in:

- 550mm x 25m
- 1100mm x 25m
- 1400mm x 25m
- 2700mm x 16m



masq

Gold Covermasq

COVERMASQ, COVERS QUICK

Ciret Ltd.

hospitals and kitchens where heavy machines are constantly moving.

In contrast, these procedures may damage conventional coatings or surfaces – areas of damage allow microbes and bacteria to take hold- rendering the surface unsuitable.

Guardcoat may be used across multiple applications – floors, walls and common contact surfaces, to provide a high wear, bacteria-resistant surface. This reduces the risk of cross contamination, bacterial spread and complements existing clean procedures.

The use of Antimicrobial Paints such as Guardcoat in hygiene critical environments provides multiple benefits; they complement existing procedures by reducing the spread and growth of bacteria on a surface, they provide a coating that withstands the use of cleaning products and acts as a protective, hard wearing coating for surfaces underneath.

Guardcoat is an effective coating for hygiene critical environments, providing a long lasting, high-wear antibacterial protection – complementing existing procedures and



reducing the risk of bacterial spread. Guardcoat has a large range of applications in the factory, commercial kitchens or healthcare and is included in the Coo-Var

Floor, Sports and Line Marking Range.

For More information: Coo-Var, Lockwood Street, Hull HU2 0HN. Tel: 01482 - 328053.



Now open in Stoke!

- All major brands available
- Colour mixing service
- Extensive selection of wallcoverings
- Wide range of decorating tools & materials
- Competitive prices
- Friendly, expert advice

For more information call: 0151 334 1237
or visit www.bromboroughpaints.co.uk

...we've got the North West covered!





CLEAN YOUR ACT UP!

Double Sided | Absorbent | Powerful | Kind to Hands

Also Available in Handy Packs of 40



Taking a fresh look *at colour*

There's lots to consider when choosing a colour scheme and many people still tend to play it safe rather than try something new. But you don't have to go too far out of your comfort zone to embrace the latest styles and as Kathryn Lloyd, colour specialist from Crown Paints explains, helping customers gain colour confidence is a great way for trade decorators to secure new business.

Setting the right tone

With so many paint colours now available thanks to tinting and colour matching technology, it can be tricky to find the right solution – after all, our homes are as unique as we are so what works for one customer might not appeal to another. Personal taste is obviously a key factor in choosing an interior colour scheme but so too is ensuring that it's appropriate for that specific room. As colour appears differently in both natural and artificial light, taking into account the most dominant light source for a room can also help ensure the chosen colour scheme works well at any time of day.

Colour guidance

Colour cards are a great way to find inspiration and as such, are a key piece of kit for any professional contractor. It's always worth seeing what new resources are available, such as the more specialist colour guides that focus on classical and historical shades or those that look specifically at



exterior projects. Taking the time to talk your customers through the different options available can help build a great relationship and will also ensure that the end result is one that everyone will be happy with.

For every homeowner that wants to keep things nice and simple with neutral shades, there is a more design conscious customer that wants to push the boundaries and go bolder and brighter. That's why it's important that trade professionals keep up to date with

the latest colour and design trends and to understand how these can be adapted and embraced to suit a variety of tastes and projects.

Simplifying design trends

Every year, experts from across the industry identify new colour combinations and designs and Crown Paints is no exception. However, the trick of staying 'on trend' while making sure a colour scheme has long-



AP RENDER

For repairing masonry walls, concrete, pointing and stone - use up to 2cm deep or at unlimited thickness when mixed with sand.

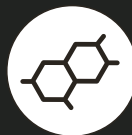


Easy to mould and holds well - perfect for the repair of shaped stone and corners



MARMARON

Ultimate hardness filler for repairs of 1mm to 30mm thickness, including damaged window sills. Also offers a very fine finish for painting.



High resin content prevents cracks from reappearing



info@axisdecor.com



020 8204 1422



#designedbydecorators

Taking a fresh look *at colour*

lasting appeal is to be flexible. That's why we have created our trends to be deliberately fluid with plenty of scope for individual personality and style.

This year's focus has helped create three distinct colour schemes – Redefined, Movement and Immersed. These three colour palettes have been created to inspire and innovate colour scheming and each can either be replicated in whole or in part, with elements from one or more trends used selectively. For a subtle approach, use stronger hues on small areas such as feature walls or to make a real impact, be creative and use a combination of colours on broad wall areas. Usually the bigger the space, the more colours can be used.

Redefined is based around a contemporary clash of chalky pinks and lilacs together with cement and charcoal greys to create a refined and sophisticated look. Concrete pavements and bright urban nightlife is the basis of the 'Movement' trend which pairs textured deep greys against a mix of vivid purple, teal or mustard along with bold geometric lines. While 'Immersed' takes its inspiration from the ocean with colours ranging from deep midnight blue to soft pastels and shimmering aqua marine shades.

Working with your paint manufacturer of choice is a great way to stay informed and to ensure that the advice you can offer your customers stays as current as the latest colour trend. To find out more about how you can use colour in your next contract, please visit www.crowntrade.co.uk and download your copy of our Colour Influences Spring/Summer 2019 collection.

For more information please email Info@crowntrade.co.uk or call 0330 024 0297. You can also follow @CrownTradePaint on Twitter, CrownTradePaint on Facebook or Crown Paints on LinkedIn



THE LITTLE ONE-HAND SANDERS

with speed control and PES filter cartridge in set



DELTA SANDER

ODE 100-2 set

- 200 watt
- 8000-13000 rpm
- 16000-26000 opm
- Orbit 2 mm
- Only 1.2 kg
- Including sanding paper 1 x P 80 and 1 x P 120
- External dust extraction Ø 27 mm



SMALL SURFACES AND EDGES

PALM SANDER

OSE 80-2 set

- 8000-13000 rpm
- 16000-26000 opm
- 200 watt
- Orbit 2 mm
- Only 1.2 kg
- Including sanding paper 1 x P 80 and 1 x P 120
- External dust extraction Ø 27 mm



CORNERS AND EDGES

RANDOM-ORBIT SANDER

ORE 150-5 set

- 350 watt
- 5800-10000 rpm
- 11600-20000 opm
- Orbit 5 mm
- 2.1 kg
- Including sanding paper 1 x P 80 and 1 x P 120
- External dust extraction Ø 27 mm



ROUND SHAPES

SAFETY VACUUM CLEANER

VCE 26 L MC

- 1250 watt
- 3600 lpm
- 21000 Pa
- Container Volume 25 l / Wet vacuuming 16 l
- 8.4 kg



SUPRA FLEX

SE 14-1 125 Set

- 1400 watt
- 600-2100 rpm
- Ø 125 mm
- 2.6 kg



For more information please contact

Stuart Colclough

P0 Box 192, Darlington DL1 9FN
Phone +44 (0) 1 325 741793
Fax +44 (0) 1 915 045133
Mobile +44 (0) 77 909 90682
uk.sales@flex-tools.com

FLEX
Das Original

Breathing new life *into Georgian windows*



Specialists in residential spraying, McWilliams Decorators and Contractors, are renowned in the Midlands for their work on period properties. When the owners of the Grade II listed Wall Hall in Wall, Staffordshire, wanted to breathe new life into their Georgian windows, they turned to McWilliams for help. QI masking tape and Festool helped in this precision job.

Peeling back the years and creating new crisp edges

Wall Hall is a 240-year-old building which has had countless coats of paint applied to its original sash windows throughout its long history. It was up to McWilliams to painstakingly remove years of old paint before recoating the wooden frames and creating a crisp edge along each glass pane.

Rhys Williams comments: "This job required

The logo features a stylized paintbrush with a rainbow-colored bristle tip, followed by the word "Dulux" in white and "ACADEMY" in gold.

Dulux ACADEMY

A close-up photograph of a hand using a metal tool to lift the lid of a paint can. The lid is white and has the text "Lift the lid on your potential" printed on it. The paint can is dark and has a colorful swirl design on its side.

Lift the lid
on your
potential

At every stage of your decorating career, our **Dulux Academy courses** can deliver increased knowledge and understanding, enabling you to meet your personal and professional ambitions. To book a course today please visit:

www.duluxacademy.co.uk

Breathing new life *into Georgian windows*



slow and methodical working, to ensure that the centuries of old paint were removed carefully, without scratching the window panes.

"The wooden frames needed sanding and the glass needed cleaning before masking and repainting could start."

Selecting the right materials for the job

Working on a listed building requires not just patience and skill, but premium-grade tools and materials too. The McWilliams team relied heavily on high-quality glass scrapers and chisels for the removal of the old paint, followed by a Festool sander with 80 grit paper.

Once they were ready to mask and repaint, there was only one masking product right for the job. Q1 Precision Line premium quality masking tape offers a 30-day UV resistance, clean removal and razor-sharp edges, perfect for the prestigious and painstaking job on the Georgian windows at Wall Hall.

Delivering a precise finish through a methodical process

The owner of Wall Hall lamented the way centuries of paint had been applied badly by hand, which had resulted in uneven lines and paint on the glass. To rectify this, the first step of this sensitive project was to use a glass scraper and chisel, to carefully remove as much of the old paint as possible from the window panes.

Next, McWilliams sanded down the wooden frames using a Festool sander and 80 grit sand paper, taking extra care not to scratch the glass.

Rhys continues: "I prefer to completely sand the wooden frame and first fill with a suitable caulk or filler before masking the windows. This gives a better result and the tape won't remove the caulk when you take it off.

"Once the sanding and first fill was finished, we carefully and precisely masked each pane of glass using plastic and Q1 Precision Line tape. The plastic would protect the

windows from overspray and the Precision Line tape would create the razor sharp edges the customer wanted."

Ready for painting, Rhys prefers to mix a small amount of grey paint into his waterbased primer so that it is easy to see when it comes to rubbing it down with a 240 grit sanding pad. Once the primer is on, he meticulously completes his second and third round of filling with caulk or filler.

"It's important at this stage not to sand too far, so I feel the window frames with my hand as I go to make sure I get the best result, removing any bumps, but not sanding too deep and creating more work," says Rhys.

"Once I've finished that step, I dust off the windows and use a tacky rag to ensure there is no dust present before I start spraying the top coats. Again I use waterbased paint because its inherent flexibility moves with the wood."

Importantly, Rhys removes the Precision Line tape when the paint is still tacky which he believes gives the best razor sharp edge.

WE ALWAYS SCRUB UP WELL



Zinsser paint meets the ISO 11998 Class 1 Scrub rating standard, so it'll still look sweet when you scrub off marks, blemishes or other incriminating evidence.

#whatsyourproblem

@ZinsserUK zinsseruk.com

ZINSSER 
QUALITY SINCE 1849

External jobs –

all year round?



The unpredictable nature of the weather can often cause issues for painters and decorators trying to book in external jobs. Here, Tim Hope, Technical Manager at Johnstone's Trade, shares details of the latest rain resistance technology that is set to allow painters and decorators to confidently schedule exterior projects all year round.

British weather was more volatile than ever in 2018. The 'Beast from the East' battered the UK with cold winds, ice and snow in February, before a brief hot spell in April and an even hotter summer. In fact, February 2018 was the coldest month since 2010 and 1.3°C below average, yet in July, areas of the UK reached the hottest temperatures recorded since 2015.

The unpredictable weather forecasts and conditions provide a challenge for people needing to protect buildings – not only in terms of finding a suitable product, but also when it comes to the application. For professional painters and decorators in particular, delaying exterior painting jobs until the spring and summer months can have a negative impact on income, but there are notable barriers to overcome at other



points throughout the year too – namely cold temperatures and increased rainfall.

To see how professionals from across the industry were being impacted by unpredictable weather, Johnstone's Trade conducted a survey of painters and decorators from up and down the country.

The results highlighted that 71 per cent of decorators felt that bad weather is the biggest problem when working on masonry



Deltec Original Gold vs Standard Masking Tape

Deltec Masking Tape **Original Gold**

THE MOST ACCURATE COLOUR TO PAINT WITH



FREE TRIAL PACKAGE
deltectape.com/gold-sample



A PRO KNOWS



[DELTECTAPE.COM](https://deltectape.com)



External jobs – *all year round?*



PAINT TO BE PROUD OF

Quick Rain Resistance

Standard smooth masonry paints



Film formation process

Improved Johnstone's Smooth Masonry



Film formation process



jobs, with 89 per cent having turned down exterior jobs because of the time of year. In fact, of the masonry jobs they had booked in, around a third (29 per cent) ended up having to be postponed because of a threat of rain.

We also asked how much of the average professional painter and decorator's workload is made up of masonry jobs – it currently makes up about a fifth (18 per cent), so it's clear to see that they're missing out on a substantial number of jobs because of the weather either side of summer.

Our research also showed that only one in 10 (11 per cent) decorators would feel completely confident doing masonry painting jobs in March, a third in April and a quarter (26 per cent) in October. Naturally, the peak summer months of June, July and August were much more favourable, with an average of 87 per cent, but that's still a large portion of the year where professionals are potentially losing out on work.

At Johnstone's Trade, we're constantly striving to improve the products and services that we can offer to painters and decorators

in line with their requirements. By using the long-standing relationships we've built up within the industry, we've been able to make significant and meaningful improvements to our Stormshield Smooth Masonry product.

The market for exterior jobs is growing and there's now more pressure than ever on decorators to take on outdoor work all year round, which is why we've taken our existing water-based paint and added a number of new elements to the formulation.

The new and improved Smooth Masonry paint has been equipped with innovative Quick Rain Resistant technology, making it rain resistant in just 20 minutes. With standard masonry paint, showers can often cause run-outs and ruin the finish but our new formulation works by improving the binding process, ensuring new paint work quickly becomes rain resistant and delivers a smooth finish.

It's not just rain that can impact outdoor jobs though. We know the temperature can drop significantly in the winter months, so our new and improved Smooth Masonry paint

can be applied from temperatures of 2°C and rising, allowing all season application – and a reduced need for painters and decorators to postpone jobs.

Our new product also has an improved opacity and spread rate of up to 17m² per litre, as well as enhanced outdoor durability, anti-carbonation properties and 15 years' weather protection certified by the BBA.

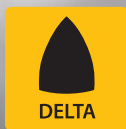
The quality of the finish doesn't have to be compromised for performance either. Johnstone's Trade Smooth Masonry is available in more than 1,500 Voice of Colour shades, which have been formulated using more durable pigments to provide the most stable colours for outdoor use – protecting against UV colour fade.

Now, thanks to our new and improved Smooth Masonry paint, painters and decorators have a catch-all solution that can be relied on at almost any time of the year.

For more information about the new and improved Smooth Masonry, head to your local Johnstone's Trade stockist or visit: www.johnstonestrade.com.

MIRKA

**CLOSER.
FOR PERFECTION.**



**IMAGINE
THE PERFECT
SURFACE.**

Mirka® DEOS 

Flawless from corner to corner

The new Mirka® DEOS Delta 663CV electric sander enables you to obtain a flawless end result easier and faster than ever before. Weighing less than 1kg and just 10cm high you can reach comfortably into tight spaces.

Mirka® DEOS Delta boasts smart Bluetooth technology with an integrated vibration sensor allowing you to monitor vibration levels while sanding.

**For further information or to arrange a demonstration,
please contact Customer Services on 01908 866100**

www.mirka.co.uk

Time to offer a decking, fencing or garden furniture service?



Sean Thompson, technical consultant at Sadolin, explores the options available for a finish to showcase the natural woodgrain or a contemporary colourful style for decking, fencing or garden furniture.

Repainting or staining exterior wood not only protects it from the elements, come rain or shine, but also makes it a more attractive feature. With so much colour choice available, you can either enhance the natural qualities of the wood with a translucent woodstain or create a new look using a solid colour.

First things first, you'll need to make sure you take time to properly prepare the wood, making sure the surface is sound and ready to be coated, especially if it's been outside weathering for a long period of time. Woodstains like Sadolin Classic work by seeping deep into the timber to protect the wood, if there's a layer of dirt or algal growth it won't work effectively so don't skip this stage.

When selecting the appropriate woodstain shade, you'll need to work closely with your customer to find out exactly what result they are looking for including the finish. It's important to bear in mind that the depth of colour of the wood itself will contribute to the final look along with the translucent woodstain shade so it's important to try out colours on a small area of the same wood first just to check it's exactly right.

Opting for a solid paint colour to cover over the woodgrain rather than a translucent woodstain finish,



has increased in popularity in recent years. Neutral greys, sage greens and pastel blues have been and continue to be particularly popular, especially for garden accessories such as sheds, fences, planters and garden furniture. With a huge range of different tones and shades of specialist wood paint to select, you can create the style to suit your customer's individual tastes.

When choosing a colour it is worth considering looking for a shade which will complement the natural environment of the surrounding area to make sure that the woodwork will tone in with the neighbouring buildings. If you're repainting wooden doors, windows or the fascia of a building, looking to the period of the property for inspiration could also help with colour choice. If selecting the perfect shade is proving difficult, there are plenty of resources available to help such as Crown's Exterior Colour book which includes details about the built environment, covering topics such as historical styles, geology and local materials, regional colours and colour application.



It's also important to 'future proof' your creations by choosing a product that will stand the test of time. Wood will naturally expand and contract as it experiences differences in temperature and as it does so, the paint needs to be able to flex without cracking as this can spoil the finish and leave areas of the wood exposed to the elements. All Sadolin formulations are created with this in mind, however for solid colour Sadolin's Superdec and Beautiflex have both been specifically designed to flex, providing long-

lasting protection whatever the weather.

Sadolin's 250ml colour testing sample pots, which are available to buy from the majority of trade stockists, are the ideal way for customers to try out their chosen colours from the 40 plus translucent shades and 280 opaque tintable products available before getting starting with their project.

For more information about Sadolin and the range of products and services available please email info@sadolin.co.uk


wondertex

premfill&finish

The perfect finish for any type of decoration

Adheres to painted surfaces
Super fine for a smooth finish
Fast setting for early sanding
Formulated for plasterboard jointing, surface smoothing, repair and snagging work

Special prices now available, please contact Wondertex:
01827 254402 | wondertex.co.uk



NEW COMBO CARGO
£168[†]
A MONTH
6 YEARS 0% APR^{*}
18% DEPOSIT + VAT (£5,550)



Official Government Test Environmental Data. Fuel consumption figures mpg (litres/100km) and CO₂ emissions 64.2 (4.4) – 68.8 (4.1). CO₂ emissions: 117 – 107g/km.[#]

[†]£168 per month offer shown only available with minimum 18% deposit (plus VAT on total transaction value) on model shown: New Combo Cargo, 2000 1.5 Turbo D 75PS Edition. Offer also available on 2000 Finance subject to status. Ts&Cs and exclusions apply. 18*. Finance by Vauxhall Finance, CF15 7YT. *6 years 0% APR offer with minimum 18% deposit (plus VAT on total transaction value). Offer available comparability into NEDC. The values do not take into account in particular use and driving conditions, equipment or options and may vary depending on the format of tyres. For more information contact

IT MEASURES UP.



VAUXHALL

British Brand since 1903

(g/km). New Combo Cargo Van range: Urban: 57.6 (4.9) – 64.2 (4.4), Extra-urban: 67.2 (4.2) – 72.4 (3.9), Combined:

1.6 Turbo D 75PS Edition vehicles, whilst stocks last. Small business users only. All other customers are excluded. Offer subject to availability, on selected models at participating Retailers only. Conditional sale, on orders or registrations from 5 April to 4 July 2019. *Fuel consumption data and CO₂ emission data are determined using the WLTP test cycle, and the relevant values are translated back to allow the your local Retailer. Vauxhall Motors Limited reserves the right to change, amend or withdraw this offer at any point in time. Correct at time of print.

Decking: *an opportunity?*



Professional decorators tackling exterior projects for domestic housing and some commercial contracts may be missing an opportunity for extra income. If there is decking at the site, then no matter how good a job has been made of paintwork, the decking will detract from the overall finished effect if it is weathered and greying. So when quoting for the work at the outset, why not offer to revive and restore the decking as part of the project or protect it if it is relatively new? Liberon's Marketing Manager, Dominic McInerney, here explains how the company's Decking Oil makes this sort of work easy, and how it solves several challenges.

There are two main issues to bear in mind when using Decking Oil. For new decking, at the manufacturing stage, the cutting process used often burnishes the surface, resulting in timber that is not particularly absorbant. This means that once new decking has been installed, a period of two to three weeks of weathering is required in the case of softwood, and one year in the case of hardwood in order to facilitate good absorption of the Decking Oil. If the surface of the decking is to be sanded during preparation, then this weathering time is not a requirement.

CROWN DECORATING CENTRES

REWARDS

PAINT FOR POINTS

EARN POINTS ON EVERY SINGLE PRODUCT*



Start Earning Points Today! Sign up at
CDCREWARDS.COM

In partnership with
red letter
DAYS

It's not just paint.
It's personal.®

* T & C's apply. IDS Customers will only receive points on sundry purchases. Not available to National Painting Contractors, Local Authorities, Housing Associations or Purchasing Organisations. See website for details.

Decking: *an opportunity?*

The second issue is that any oil finish will darken its surface and then stay that way permanently. For this reason it is important to test the Decking Oil on an offcut to make sure the colour effect created is definitely right for the customer.

When selecting a Decking Oil, make sure that what is used features UV filters to prevent fading and is highly water-resistant, as is the case with Liberon's.

As with any woodcare project, good preparation is key. In the case of applying Decking Oil, it is important to ensure the surface is clean, dry and free from previous finishes and dust. For best results new wood can be lightly sanded and old wood cleaned with Liberon's Tough Deck Clean & Revive.

A common misconception when applying Decking Oil to softwoods is that the first coat should be allowed to fully dry out before applying a second coat. In reality, some areas of the decking will be more absorbant than others. Once a first coat has been applied, if it allowed to dry out fully it effectively forms a 'barrier', preventing the absorption of a second coat into the timber. The Decking Oil needs to be absorbed by the timber, not on the timber, so it is actually important to begin the application of a second coat before the first coat has dried. The oil should simply be allowed to penetrate for 15 to 30 minutes before starting on the second coat. If applied incorrectly, peeling will occur, necessitating costly call-backs. The key is to take one's time during the application process, wipe off what has not

been absorbed using a lint-free cotton cloth, and work at a section at a time to avoid having to walk over it.

When applying Decking Oil to softwoods the oil must be stirred well first. Then a generous coat should be applied with a paint brush or roller. Then more coats of Decking Oil may be applied until the timber no longer absorbs the oil. The

decking must be allowed to dry for 24 to 48 hours before it may be used.

When applying Decking Oil to hardwoods, best results are achieved by wiping on the oil in very thin coats with a cloth unless the hardwood is very absorbent. Again, it is essential that any oil that has not been absorbed into the timber is wiped off thoroughly with a clean lint-free cloth. For new hardwoods, it is recommended to leave the wood exposed for up to 12 months before applying any finish. This allows the grain in the wood to open and breath and aids penetration and adhesion of the finish.

To maintain the decking in its optimum state, it is advisable to apply a third coat in the autumn in order to protect it during the winter months. Thereafter professional decorators have the ideal ongoing opportunity for repeat business because ideally Decking Oil should be re-applied every twelve months. Some homeowners are willing to tackle this maintenance work themselves, but there are still plenty of opportunities to offer to take on this work for customers who are too busy to do it themselves or who view the maintenance of decking to be an onerous task.

Liberon Decking Oil is available in a choice of Clear, Medium Oak and Teak finishes and comes in two tin sizes: 2.5L or 5L.

For further information about Liberon and the company's extensive range of woodcare products, visit www.liberon.co.uk





An exceptional finish starts with perfect masking.

Q1® Premium Masking Solutions
for professional painters.

Crown Paints'

40th Apprentice Decorator of the Year



For the last four decades the Crown Paints Apprentice Decorator of the Year competition has showcased the talent and skill of the UK's best apprentice painters and decorators. Today it is held in association with SkillBuild and the Construction Industry Training Board (CITB) as part of the national WorldSkills show and the bi-annual global WorldSkills competition which gives apprentice decorators the chance to compete on an international stage.

Cast your mind back to 1979, if you can. Pink Floyd released The Wall, Sony unveiled the Walkman and MacDonald's introduced the Happy Meal to its menu. Dark wood panelled walls and patterned wallpapers combined with heavily patterned carpets and soft furnishings dominated UK home decor while earthy tones including shades of green, brown, yellow and of course orange were difficult to escape from.

The Crown Paints Apprentice Decorator of the Year (ADY) competition, originally organised by the Association of Painting Craft Teachers (APCT) and known as The Young Decorator of the Year, had been running for just a few years when Crown

Paints came on board as the main sponsor. Crown has supported it every year since, giving the painters and decorators of the future their chance to shine.

Keeping up with the times

Back in the early days the competition comprised one single event in one location, with around 20 apprentices taking part each year. As the 80s dawned, bringing with it artex ceilings, woodgrain wallpaper, frilly furnishings and wallpaper borders in abundance, the competition was steadily gaining pace. It was around this time that the ADY competition expanded its reach with two separate regional heats hosted for the first time - one in the north and the other in the south.



Red Devil

- SPREADS EASILY
- PAINTABLE IN MINUTES
- WON'T SHRINK OR CRACK
- INTERIOR AND EXTERIOR USE
- CLEANS EASILY WITH JUST WATER

PREMIUM LIGHTWEIGHT FILLER

NO SANDING REQUIRED



MEDIUM GRADE READY MIXED ADHESIVE



- WILL NOT SHRINK TEXTILES OR FABRICS
- ADDED PVA FOR HIGH INITIAL TACK AND STRONG FINAL BOND
- EXCELLENT SLIP FOR PATTERN MATCHING
- CONTAINS FIRE RETARDANT FOR CRITICAL SURFACE SPREAD OF FLAMES

WWW.CIRET.CO.UK

+44(0)2392 457 450

Crown Paints' 40th Apprentice Decorator of the Year

With the backing of both Crown Paints and CITB, the ADY competition went from strength to strength throughout the 90s - a decade characterised by minimalism and neutral colours including, of course, magnolia. It was at this point that the competition changed with the introduction of four additional regional heats and a national final just as the government's modern apprenticeship scheme was launched.

In the early noughties, as bold colour schemes and patterned wallpaper marked the end of minimalism and feature walls were in high demand, the ADY competition virtually doubled in size. The organisers



changed the criteria to accommodate a variety of different competencies and apprenticeship levels and scores more talented apprentices signed up to take part.

Today the competition is widely recognised as the UK's premier painting and decorating skills competition. It features no fewer than 11 individual regional heats including one in Northern Ireland, making it a truly national competition. Part of the national WorldSkills event - the largest multi-trade competition for UK construction trainees and apprentices studying a range of skills from bricklaying and cabinet making to plastering and stonemasonry - the competition also gives apprentices the chance to compete in the bi-annual international WorldSkills competition, which will take place in Russia later this year. ADY offers even more opportunities for the UK's most talented apprentice painters and

decorators to show the world what they can do

A platform to showcase decorating skills

The main element of the competition has remained the same - to test the apprentices on their decorating technique, accuracy and attention to detail. The designs are carefully created to test multiple skills and have changed over the years to mirror the fashions of the time or key events.

During the regional heats and national final, the apprentices are judged on their specialist skills such as stencilling as well as their

execution of everyday tasks like cutting in, painting joinery, free-hand painting, and wallpapering. It's not just the overall finish the apprentices are examined on - the judges also like to see them selecting the right



tools for each part of the design and keeping their workspace clean and tidy.

The competition is intended to reflect the requirements of the current curriculum to ensure it's fresh for each wave of new apprentices, which is why today's competitors work predominantly with water-based paints. As some specialist skills have naturally fallen out of favour and are no longer on the curriculum, they have in turn been taken out of the competition with new techniques replacing them. For example, while signwriting is no longer

covered, competitors are instead judged on their use of frisk film. Crown Paints Apprentice Decorator of the Year might be more than 40 years old this year but it's every bit as relevant to today's decorators.

The ethos of the ADY competition has not changed in 40 years; it is all about celebrating the best of the industry and inspiring the next generation of painters and decorators. With the support of Crown Paints as sponsor, it has steadily grown over the years and today many colleges and employers alike support the competition and actively encourage their apprentices to take part.

The final will be held at WorldSkills UK LIVE, at Birmingham's NEC over three days from 21st to 23rd November 2019.

With two former winners on the panel all ADY competitors can pick up useful hints, tips and advice as well as improving their

confidence and showcasing their work to potential future employers just by taking part in the competition - making it an invaluable experience for apprentice painters and decorators looking to take their next steps on their career ladder.



For more information email

Info@crowntrade.co.uk or call 0330 024 0297. You can also follow the competition throughout the year @CrownTradePaint on Twitter, CrownTradePaint on Facebook or Crown Paints on LinkedIn.



FESTOOL

Perfect surfaces.

Comfortably done.

The ETS EC 150 eccentric sander provides comfort without compromising on power.

This sander has been specifically designed to reduce fatigue whether sanding overhead or on a flat or curved surface. Ideal for professional preparation of walls, ceilings, doors and stairs.

Discover more at www.festool.co.uk



Decorating solutions

from Axus Decor



S-Tex Painter's Shorts

Our grey series workwear range now features the S-Tex Painter's Shorts. Made from a lightweight, comfortable, shrink resistant, hardwearing fabric, they offer both comfort and functionality.

The shorts are sleek with geometric pockets and modern contrasting colours throughout. They are exceptionally durable with triple-stitching in the crotch area and other areas prone to ripping.

They have multiple pockets including a pencil pocket, zipped safety pockets, tool pockets, a large smartphone pocket and a reinforced scissor pocket.

The shorts also come with 3 useful loops; an ID tag loop (tag included) and an adjustable dusting brush loop and an adjustable hammer/scrapper loop. These convenient features make them the perfect attire for dealing with a wide array of tools and jobs.

Full details on the grey series S-Tex Painter's Shorts and the rest of the Axus Décor range can be found at www.axusdecor.com

Brewers *brief*

Brewers account holders have the advantage

Introducing Brewers Advantage - a brand new benefit to Brewers account customers offering a range of exclusive deals selected with decorators in mind. Designed to help you save on everyday expenses, you can find deals on fuel, van insurance and even your weekly food shop - log into your account to find out more!

Don't forget that as a Brewers cash or credit account customer, you can log in to your account online to order products, arrange delivery or collection and manage your account in real time, leaving you more time to spend with your customers. The online account facilities mean you're able to check stock at any Brewers store whilst viewing your trade prices at any time of the day.

Plus, if you're a Brewers credit account holder, you can also keep an eye on your account balance, check over past transactions or print copy invoices and credit notes whenever you need to, all from your account login at brewers.co.uk.

To find out more about any of these online services including opening a Brewers cash or credit account, simply visit www.brewers.co.uk today.

Build a Better Business



Visit

26 – 27 November 2019
RICOH ARENA,
COVENTRY



GO TO paintshow.co.uk for FREE tickets

On test: site radios

Music While You Work was a BBC 'Light' Programme and the Home Service starting in June 1940 and lasted until September 1967. Well, now it's long gone so you have to make your own arrangements. Power tool companies offer a range of 'Site Radios' for those who like to have music to lighten the day's toil. Some of these radios are more complicated than the old trannie. The Makitas for instance can operate on the mains or three batteries that normally drive power tools. The little Festool on the other hand gives the owner the choice of mains or one power tool battery.

We asked these companies to send along their wares and this is what we found.

Makita DMR109

| | |
|---------|---------------------|
| Price | £120.00 from Amazon |
| Contact | 01908 21167 |

Quite a chunky radio with a good carrying handle. This radio is a DAB radio that can be powered via a mains power supply or by using either Makita LXT or CXT batteries. The radio features two 76mm speakers, has 5 station presets and can be connected to smartphone via an AUX input lead (Not supplied), its also both dust and shower proof for use in less than ideal weather. That said, if I had paid £120.00 for a radio it would be treated with kid gloves and not left out in the rain however light.



Makita DMR112

| | |
|---------|-------------------------|
| Price | £131.95 from Passiontec |
| Contact | 01908 211678 |

Makita's DMR112 is a DAB/DAB+ job site radio with Bluetooth. It can be powered via an AC adaptor or by power tool batteries



from Makita's LXT and CXT ranges. These are Makita's 10.8v CXT Li-ion, 12v CXT Li-ion, 14.4v Li-ion, 18v Li-ion. A USB port enables mobiles and other electronic devices to be charged while the radio is in operation.

Bosch GML 50

| | |
|---------|------------------------------------|
| Price | £205.00 ex VAT from Travis Perkins |
| Contact | 01604 752424 |

The only radio in the line up with 'roll bars,' and the only radio costing more than £200.00. It's a heavy item and needs two hands to carry easily owing to its shape. Able to operate on mains or GBA 14.4V or GBA 18V batteries. If there is a battery connected and the set is working on mains the battery will be charged as well. There are two external 13 amp sockets, an internal USB port, a slot for a SD card and an Aux socket to connect a MP3 or mobile phone. Clipped into the top handle there is, I feel, an easily lost remote. Some bosses would feel that their employees would be better employed concentrating on their painting than spending so much time worrying about the music to which they are listening. That said the GML 50 has good sound reproduction and has good build quality.





tesa® PROFESSIONAL

FOR RESULTS YOU BUILD YOUR REPUTATION ON

**NO
PAINT
BLEED!**

FOR OUTDOOR USE <
26 WEEKS RESIDUE FREE REMOVAL <
FOR USE ON WINDOWS AND ROUGH SURFACES <

FOR INDOOR USE <
6 MONTHS RESIDUE FREE REMOVAL <
FOR USE WITH ALL PAINTS <



tesaUK



tesaUK



tesaUK



@tesaUK_tape

tesa.co.uk/craftsmen

Dewalt DWST1-81079-GB

| | |
|---------|--------------------------|
| Price | £199.99 from Screwfix |
| Contact | 03330 112 112 (Screwfix) |



A very large radio, nearly the size of an old Ghetto blaster. It is though the size of the normal power tool case so it can be clipped together with other Dewalt power tool cases, called TSTAK and be fixed to the Dewalt 'sack' barrow. The radio offers DAB, FM and AM reception. It can operate on Bluetooth, USB and Aux input.

Control remotely via mobile packs, including FlexVolt batteries.

Festool SYS ROCK BR 10 DAB

| | |
|---------|---|
| Price | £169.99 from Screwfix (includes VAT) |
| Contact | 01284 760791 |

Compact and bijou, this site radio is of a robust and chunky design. Giving the user various receiving and playback options via either Bluetooth, Aux-in plus four presets stations. Can run on a Festool slide in 10.8 – 18V batteries or via mains cable. A USB socket will give the owner the ability to charge

their mobile phone and the set features Bluetooth interface with hands-free function. Has nice and easy to operate with large buttons and a colour LCD display. One small thing, you can't hang the set up with its hanging hook if the set is operating with a slide-in battery.



WATER BASED
METAL PRIMER
FOR ALL METALS



NEW! Eggshell and Matt finishes
now available in the well established
Aqua Advanced range.

AQUA-ADVANCED
TRADE

All metals, water-based rust inhibiting primer,
for **ALL** ferrous and non-ferrous metals.



Innovators in Water-based Technology

Tel: +44 (0) 1279 876 657

Email: info@bedec.co.uk

www.bedec.co.uk

Packexe®

UNROLL FOR GOLD

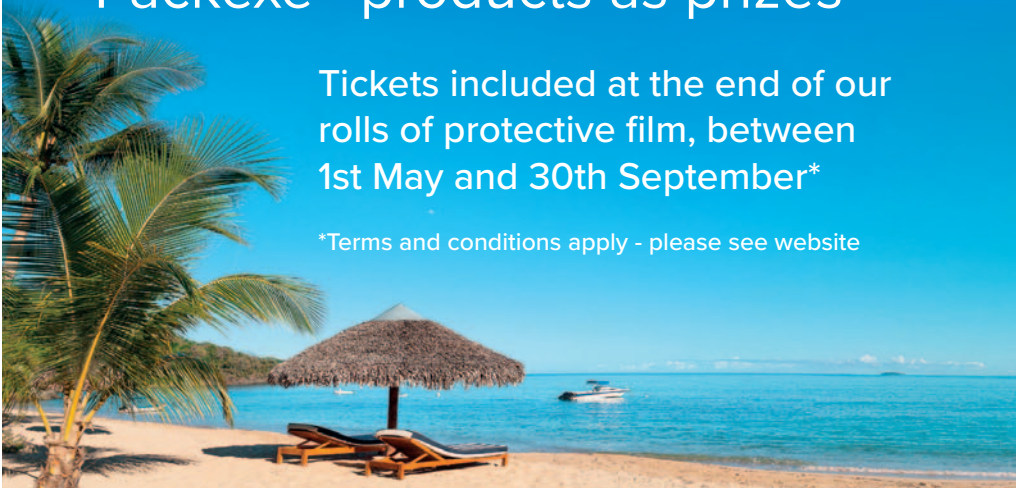


WIN BIG!

in our 30th anniversary
GOLDEN TICKET giveaway,
with £30,000 worth of holiday
vouchers and £30,000 of
Packexe® products as prizes

Tickets included at the end of our
rolls of protective film, between
1st May and 30th September*

*Terms and conditions apply - please see website



Holiday Vouchers provided by  Thomas Cook

TRIED, TESTED & TRUSTED



www.packexe.co.uk • sales@packexe.co.uk • 01392 438191

 facebook.com/packexe
 twitter.com/packexe
 instagram.com/packexe.ltd



On test:

Volkswagen Transporter Combi Highline 2.0 TDI

by David Stokes

I was surprised that the Transporter Combi delivered had an auto gear box and astounded to find it had seven gears. Other than that all the controls were in the traditional place with the handbrake lever between the two front seats. The gear change lever is mounted as usual nowadays on the dash away from the floor allowing easy traversing of the cab by either occupants.

There are three sets of lights, side, secondary and head. The secondary lights come on automatically and are on all the time the van is being driven. The driver has the choice to switch on the headlights. If lighting is required in a street after dark then the driver can set side lights only on the lighting switch. The combi is in all respects has a crew cab layout with two front seats and three behind split into a two and one seat configuration. These seats are removable but require two people at least to shift owing to their weight and awkwardness of shape.

As with many vans these days you are spoilt for choice for cubbyholes and door storage in the cab. On top of the dash is a small locker big enough to accommodate a laptop. There are two 'glove lockers' the top one has an aux socket and there is a USB socket and space enough for a pack of sandwiches. The lower glove locker is large and a useful space if your crew have sandwiches as well. If you favour a flask for your beverage there is a slot in each door card and one low down in the dash between the front seats.

Behind all the seats there is the load space. In a normal van where there are just the front seats the load

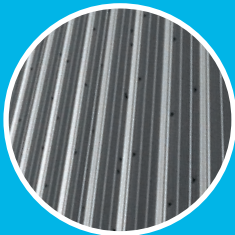
space has six-tie down loops. There are none at waist level and as the test van was lined with plywood so the driver can't use the various holes in the frames to hook on a ratchet strap hook. There are many occasions one would need to secure a tallish item and it's a pity there are no ways of securing one.

Out on the road the van has good manners and excellent visibility through both the



GREAT OUTDOORS!

USE ONE CAN ON YOUR
EXTERIOR PROJECTS



CLADDING



GUTTERING



UPVC WINDOWS



DOORS



HARDWOOD



METAL FENCING

PRIME BLOCK FINISH

- ♦ All-purpose water-based primer and finish in ONE CAN.
- ♦ Blocks, seals, locks, kills and hides stains. ♦ Anti-corrosive on all metals.
- ♦ Tintable to full BS and RAL colours. ♦ Interior/Exterior durability.
- ♦ Sticks to metals, woods & building plastics.



For more information, please email: enquiries@bradite.com

 @Braditepaints www.bradite.com

screen and the rear view mirrors. The external mirrors fold by pressing the 'lock' symbol on the key fob for two seconds. They do not unfortunately fold automatically like many vehicles on locking the doors remotely. Driving the Combi requires little in the way of hard work, the gears change smoothly and the brakes are nicely progressive, the steering light but with good feel. Unlike many vans with the unglazed rear doors the Combi's rear door is glazed so you get a working internal rear view mirror.

There are many vans I have tested that are equipped with an internal rear view mirror but no glass in the rear door. The rear door in the test van was top hinged the catch is low down. The door as with the sliding side door closes electrically, (VW call that power latching) you hear a buzz as the door closes and you see it move to close tight.

I enjoyed my week with the Transporter Combi, easy to drive, is sure footed in the bends and is very much at home on the motorways. The test van had five reasonably comfortable seats.

Basic 'On the Road' Price

As Tested
£43,139
(including VAT)



Specification:

| | |
|----------------------|-------------------------|
| Engine | 2.0 (150PS) Turbo D |
| Capacity | 2000cc |
| Max Power | 150PS @ 3,350 - 3750rpm |
| Max Torque @ | 340 @ 1500 - 3000rpm |
| Load Width & Height | 4,904 / 2,297 / 1,990mm |
| Max Payload | 1,098kg |
| Gross Vehicle Weight | 3,200kg |
| Load Volume | 5.8 m3 |
| Fuel Tank Capacity | 70 litres |
| AdBlue Tank | 13 litres |
| Insurance Group | 29E |
| Service Interval | 16,000 miles or 1 year |
| Combined Economy | 45.6mpg |

Sandtex
TRADE



**YOU'RE NEVER TOO FAR FROM
YOUR LOCAL Sandtex STOCKIST**



Visit sandtextrade.co.uk to find your local stockist



/SandtexUK



@Sandtex_UK

ALL-DAY SPRAYING

COMFORT & CONTROL



NEW AIRLESS SPRAY GUN
CONTRACTOR PC™



COMFORT

The lightest and easiest
Airless gun ever built.
Spray all-day with less fatigue.



CONTROL

Lightest trigger easy to
adapt from 2, 3 to 4-fingers
according to your preference.



SPEED

ProConnect™ needle
cartridge for complete
on-the-job rebuild in seconds.



TRADE-IN PROMOTION

Trade in any spray gun and get **£ 100** off on the NEW Contractor PC spray gun.
(Offer excluding VAT & only valid in participating stores)

Colourful Crackle Tiles



Walls and Floors have just released their colourful Craquelure Collection. It's a selection of brick shaped ceramic wall tiles with a characterful crackled glaze, which gives a vintage appearance. The collection consists of 7 colours - ranging from cool whites and greys through to pinks and blues. There's even a Living Coral Tile, which fits in with Pantone's Colour of the Year 2019. The tiles have a glossy finish, which really highlights the crackling.

Outdoor masking

Working outdoors is an unpredictable challenge that many professionals face every year. With that in mind tape manufacturer tesa is highlighting to the trade the availability of its Precision Mask Outdoor range - a high-grade paper masking tape for precise and flat paint edges outdoors in most weather conditions.

It consists of an extra-thin and strong washi paper backing coated with an acrylic adhesive. It is designed to suit a variety of outdoor applications on different kinds of surfaces; from protecting PVC windows to masking lights in preparation of painting concrete surfaces. The thin but resistant backing material is conformable and leads, says tesa to flat, precise, razor sharp paint



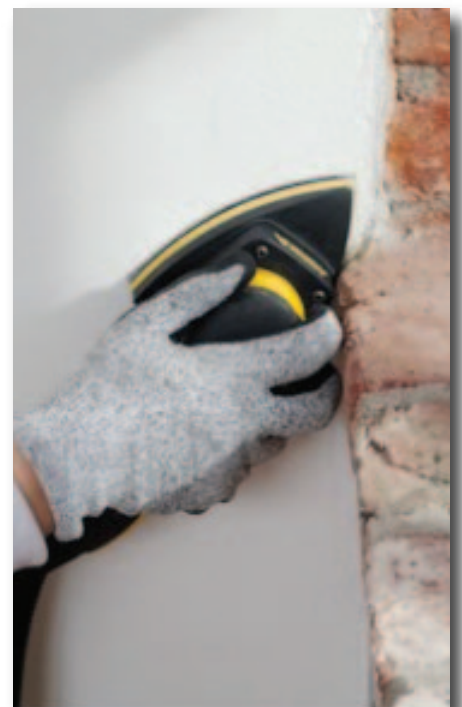
edges with no paint bleed .

Easy removability up to 26 weeks after application outdoors is a key feature.

Mirka DEOS Delta

Mirka has expanded its Direct Electric Orbital Sander (DEOS)* range with the addition of the new DEOS Delta. Its ergonomic iron shape design allows the user to access hard to reach areas easily and efficiently, while reducing the stress on arms and hands, and delivering a flawless smooth finish from corner to corner.

The Delta's low profile, of only 10cm, ensures it is closer to the surface at any angle allowing for increased control of the sanding process, even during long periods of use. With the Delta weighing less than 1kg there is less strain on the user's muscles, leading to a reduction in the risk of arm fatigue. Additionally, when the DEOS Delta is combined with Mirka's net abrasives and a dust extraction unit, it provides a consistent scratch pattern and a dust-free work environment to work in.



DIAMOND WALLS ARE FOREVER*



Our most durable paint yet.
Now with anti-fade technology.

*Well, not quite forever, but at least 50x more durable than standard trade emulsion.



Learn more at duluxtrade.co.uk/Diamond



Earthborn has launched 7 new hues

The new colours are:

Bobble Hat – With its roots firmly in nature, Bobble Hat is a majestic blue.

Hippo Hooray – An honest, well balanced grey.

Hobgoblin – An easy-going green with a subtle hint of blue.

Delilah – This delightfully flattering coral hue sits between orange and pink.

Flutterby – Nearly white but not quite, Flutterby is inherently versatile.

Lady Bug – A richly toned burgundy, both classy and considered.

Tick-Tock – A timeless shade offering warmth, freshness, light and shade.

Earthborn has also renamed Claypaint and Eggshell No.17 'White' to 'White Clay' to reflect its uniquely soft, creamy look.

the varnish experts

launching our little diamond... heavy duty extreme varnish

interior and exterior

the strongest of all one-pack varnishes that dries in minutes and cures in 16 hours for the ultimate protection of interior and exterior surfaces to an **industrial** level of finish



POLYVINE®

find us in store or online at polyvine.com

BIO FLEX™ ALLROUND

The first bio-based epoxy repair resin for all types of repair throughout the year

- For the permanent repair of wood decay and wood damage.
- Suitable for repairing during all seasons.
- Suitable for renovating, restoring and maintaining wooden components.
- For use indoors and outdoors.
- Excellent adhesion on many types of wood.
- Permanently elastic.
- To be used in combination with DRY FIX® UNI.



BIO FLEX™ ALLROUND

Characteristics:

- Contains 40% bio-based raw materials
- Certified 'OK biobased' - 1 star
- Ready for sanding and painting after 12 hours (at 20°C)
- For repairs with a layer thickness of 5 - 50 mm
- Application temperature: 0 - 35°C
- Application period: 15 - 20 minutes at 20°C
- Non-sagging and does not shrink
- Easy to apply and very easy to mold tight
- Built-in mixing control system
- Guaranteed adhesion of paint

New from Gemini

Urbancrete, the new concrete-effect collection from Gemini Tiles embraces the trend for bringing an urban aesthetic into the home. The new collection will complement exposed brickwork and pipework as well as vintage furniture and muted modern accents. Suitable for walls and floors, the large-scale 800 x 800mm tiles are available in a pared-back, neutral colour palette of greys, white and milk.



Leyland Trade's acrylic eggshell joins hardwearing range

Leyland Trade has announced that Acrylic Eggshell has joined its range of Hardwearing products.

The paint is formulated with tough acrylic resin, making it stain and moisture resistant, while also offering a washable and easy-to-clean finish once dry – helping the paint look like new for longer.

The paint's durability, combined with its quick drying time, ease of application and low odour, means it is suitable for use in a range of environments, including kitchens, bathrooms, schools, hospitals and more. It is suitable for use on walls and ceilings, as well as primed wood and metal.



Johnstone's Trade launches Air Pure

Johnstone's Trade has introduced new Air Pure – a bio-based wall and ceiling paint that actually purifies indoor air which can be up to 10 times more polluted than outdoor air, containing a number of volatile organic compounds which including formaldehydes emitted from a range of common indoor materials such as chipboards, fibreboards, furniture, carpet, glue and interior fabrics.

Once applied, Johnstone's Air Pure removes up to 70 per cent of formaldehyde from the air, helping to neutralise the indoor environment over a number of years.

Johnstone's Air Pure is available in a variety of colours, including the new Voice of Colour colour palette, and dries to a desirable matt finish.

Purdy extras

Purdy has launched a range of accessories that all work with the company's Dual Roll-Off Bucket which allows more than one user to load paint at the same time, increasing efficiency and productivity. With a side pour spout for easy decanting and a soft ergonomic handle, the Purdy Dual Roll-Off Bucket is a easy to use, particularly with longer rollers.

Now the bucket is even more versatile with the introduction of a new Roll-Off Bucket Lid that clips on top, allowing decorators to store paint efficiently between coats or even overnight. As well as improved productivity – no clean up or washing out at the end of the day – the lid can also protect paint from site dust and debris, reducing waste.

The new Purdy 18" Paint Tray also fits neatly on top of Dual Roll-Off Bucket and can double as a lid.

Purdy Dual Roll-Off Bucket Liners have been introduced to make clean up and colour changes fast, easy and efficient, especially on sites with no water supply. They fit inside the Purdy Dual Roll-Off Bucket and are easy to fit and remove thanks to a specially designed easy remove tab. Ideal when a quick colour change is needed, or when working with more than one colour, these Purdy Bucket Liners improve productivity and make jobs cleaner and easier for professional decorators.





NEW PRODUCTS FOR THE
PROFESSIONAL DECORATOR
FROM PURDY



READY FOR ANY JOB



18" PAINT TRAY

FOR THE PERFECT FINISH



MOHAIR MINI ROLLER

FAST AND EASY CLEAN-UP



BUCKET LINERS

AVAILABLE AT PAINTING AND DECORATING STORES NOW
FIND OUT MORE AT PURDY.CO.UK



Metallic wallpapers

Farrow & Ball has launched some of its most iconic and sought after wallpaper designs in new metallic colourways.

The collection of 25 wallpapers include nine of the brand's most striking designs: Lotus, Tessella, Gable, Enigma, Tourbillon, Bamboo, Ringwold, Amime and Yukutori. In colourways punctuated with shimmering silvers, burnished coppers and lustrous golds, the designs are ideal for creating an impactful and luxurious scheme in your home. 17 of the colourways will be printed with one of the nine new colours as their ground colour.

Like all Farrow & Ball wallpapers, the designs are handcrafted using traditional printing methods, layering richly pigmented paints to create uniquely textured paper protected with a wipeable glaze.

Deltec launches Masking Tape Extreme

After the success of Deltec Original Gold and Deltec Sensitive comes the launch of Masking Tape Extreme.

Masking of rough and moist surfaces can be a problem: tape doesn't stick well or tears while

removing. However this new tape is made of reinforced Japanese rice paper for creating ultra sharp paint lines and doesn't tear while removing. The masking tape is suitable for indoor and outdoor due to the 4 months UV resistance.

Get a free sample. Ask your local retailer or check deltectape.com/sample.



The premier trade and employers' association for the painting & decorating industry in the UK

Look at these great member benefits...



Support & Growth

- Legal Support
- Mediation & Arbitration
- Employment
- Tax Support
- Product Information
- Training
- Technical Advice



Market Profile

- Free Profile on Website
- Certification of Quality
- Competitions
- Representation
- A Voice for the Industry



Knowledge & Skills

- Legal Assistance
- Industry Standard Templates
- Insurance
- Tax Advice
- Health & Safety and Risk Assessments
- Employment Support
- Helplines
- Apprentices and Training
- Mediation and Arbitration
- Free Member Magazine



To join The Painting & Decorating Association or for more information please contact us:

W: paintingdecoratingassociation.co.uk E: info@paintingdecoratingassociation.co.uk T: 024 7635 3776

www.paintingdecoratingassociation.co.uk

*Woodcare
Experts Since*
1912

Apply directly to laminate flooring



Colour your flooring



Decorative Floor Varnish

- 6 contemporary metallic, gloss and satin finishes
- Suitable for old laminate floors
- No undercoat required
- Highly durable protection

For more information on this new exciting range of woodcare products and stockists please get in touch

www.liberon.co.uk | 01797 367555

Safeguard's spray puts an end to mould

Designed to eradicate mould from damp and poorly ventilated properties, Dryzone100 Mould Killer – from Safeguard Europe – is a convenient, water-based, non-abrasive means of tackling this problem.

Mould Killer is a handy, biodegradable biocide available in 500ml bottles which will remove mould from kitchen, bathroom and other surfaces – such as window cills – with long lasting effect. One litre of product will treat up to 5m².

The Dryzone System from Safeguard is a complete rising damp renovation range that delivers permanent damp-proofing solutions: from preventing moisture ingress through to specialist replastering and mould-resistant decorating materials.



Quick disc change



Accessory-change system for grinders X-LOCK from Bosch means faster, easier changes – with no spanner, nut or flange to get lost. One click is all you need.

To remove a disc, just flick a lever on the grinder. Changeovers can be completed in 5 seconds – which is five times faster than normal. You can even do it while wearing gloves. There's no attachment nut to seize up on a jammed disc – or to get in your way when working at flat angles, or damage material surfaces. What's more, X-LOCK indicates the right accessory mounting direction and won't allow direction-specific accessories such as diamond cutting discs to be mounted incorrectly.

Wallpaper collection inspired by Wes Anderson movies

MuralsWallpaper have released a curated selection of wallpaper designs that form the Anderson Aesthetic collection. The collection is inspired by Wes Anderson's most popular movies and the director's distinct style feel as though they've stepped straight into the whimsical world of Wes.

Inspired by the quirky and beloved interior design style found in the filmography of Wes Anderson, the Anderson Aesthetic collection features a vintage-feel butterfly pattern, a striking jungle tiger design with detailed paint textures, and pastel panelling influenced by camp design and art.



Last issue we transposed the images of these two products. Apologies. We re-run them here.

All at hand

The HighTower system prevents time loss caused by climbing up and down ladders, and also minimises potential accidents and spillages. It also ensures paint buckets and tools are at hand when painting above ground reach level, and eliminates the need to hold the paint can or bucket at height. The disposable liner saves on clean-up time, ensuring faster finishing.



Offering access on the go

Consisting of a base pack and two further extension packs that can be purchased separately, the Werner 303 series Access Tower is ideal for light trade work.

The Mobile Access Tower Base Pack 1 has a platform height of 0.7m for lower level access work such as decorating, maintenance and construction work. The compact single width frame, complete with a sturdy platform, comes with double braked wheels for easy manoeuvrability and additional safety.

For those working at higher levels, the two extension packs offer professionals the option to extend the tower height.

The Mobile Access Tower Extension Pack 2 can be used to easily extend the working

height of the base pack from 0.7m to 1.8m. For additional safety, diagonal bracing provides rigidity to the tower. If required, this tower's height can be increased further with the addition of the Mobile Access Tower Extension Pack 3. When combined with Base Pack 1 and Extension Pack 2, the platform height is extended 3.8m.



Quality...



HANDMADE IN
THE USA 

Uncompromised

CORONA[®]

web.
tel.
email.

www.coronabrushes.co.uk
0333 20 21 031
sales@coronabrushes.co.uk

ProDec
ADVANCE

Coming summer 2019

Ice
Fusion

The only brush
officially endorsed by

