

# The Professional Painter & Decorator

AkzoNobel

THE PERFECT  
MATCH FOR  
PROFESSIONALS



## The palette in your pocket.

With the NEW Dulux Trade Colour Sensor, scan a colour and get a Dulux colour match in seconds.

To find out more and get matching, please visit [duluxtrade.co.uk/sensor](http://duluxtrade.co.uk/sensor)



*no loose  
parts*

*snug fit*

*easy to  
anchor plastic*

*sturdy*

 **TRIMACO**

# HEAVY DUTY E-Z UP<sup>®</sup>

DUST CONTAINMENT POLE



## KEEP DUST IN

## KEEP CUSTOMERS HAPPY

 **TRIMACO**

Manufacturers of KleenEdge Low Tack Painting Tape  
[www.trimaco.com](http://www.trimaco.com)

**Ciret** Ltd

UK distributor for Trimaco products  
02392 457450 | [www.ciret.co.uk](http://www.ciret.co.uk)

**AVAILABLE FROM YOUR LOCAL DECORATORS MERCHANTS**

# The Professional Painter & Decorator

INCORPORATING THE PAINTING & DECORATING JOURNAL

## News

2

## Burr Walnut

8

With Mid Century furniture making a massive comeback, Burr Walnut has seen a resurgence in popularity.

## The Dulux Trade Colour Sensor

10

A new piece of kit from Dulux Trade take can take a read on a colour and then, almost immediately, give a colour reference to which the tone can be mixed. It's called the Dulux Trade Colour sensor.

## ProDec's Ice Fusion Brush – it's all in the taper

12

When ProDec started developing the Ice Fusion brush the object was make achieving a top-quality finish easier and quicker. To do that it invented new technology - Shard filaments and Form Recovery Technology.

## A modern take on a traditional finish

14

Lindsay Hall, brand manager for Crown Trade, explains how the new generation of eggshell paints can offer a touch of class to walls and woodwork, and a finish that is as durable as it is decorative.

## National Painting & Decorating Show 2019 Ricoh Arena, Coventry, 26 – 27 November

22

Now in its 25th year, the National Painting and Decorating Show is the industry's major trade event.

Every year professional decorators and contractors make their way to Coventry's Ricoh Arena to see the latest in product innovation, as well as the colours, trends, textures and techniques driving today's decorating market. Here's a preview.

## Mobility to the power of three

30

The new Systainer3 from Festool

For an organised workplace and safe transportation of tools and accessories the new generation of Systainer offers mobility with practical and smart functions.

## Marketplace

36

# Subscribe to the

## The Professional Painter & Decorator

only  
**£18 per year**  
(including postage)



It's the only way of ensuring  
you receive your copy

Published 4 times per year -  
February, May, August & November

Make cheques payable to  
**DPA Publishing Ltd**

Orders can only be accepted with payment

Send to:

**DPA Publishing Ltd**

Stoney Lane Barn, Stoney Lane,  
Bovingdon, Hertfordshire HP3 0LY



## The National Painting & Decorating Show

**Nov 26th - Nov 27th 2019**

**Editorial** David Pescod  
**Advertising** Richard Daynes

Published by  
**DPA Publishing Ltd**  
Stoney Lane Barn  
Stoney Lane  
Bovingdon  
Herts HP3 0LY

**Editorial:** 01303 238002  
**Email:** [ppd.editorial@gmail.com](mailto:ppd.editorial@gmail.com)

**Advertising & Subscriptions:** 01442 832715

**Production** The Orange Design Group

**Printed by** Wyndeham, Roche  
**Subscription** £18.00 p.a. (in the UK)

## SUBSCRIPTION

Name: \_\_\_\_\_

Company: \_\_\_\_\_

Address: \_\_\_\_\_

Postcode: \_\_\_\_\_

Email: \_\_\_\_\_



## Crown Decorating Centres proves perfect for chateau refurb



Crown Decorating Centre in Brentford has played its part in transforming a stunning French chateau, as featured on Channel 4's popular 'Escape to the Chateau DIY' programme.

With over 30 rooms, owners Paul and Emma have come to rely on the team at Brentford Crown Decorating Centre for decorating tips and product advice as well as colour-matching paints to tone in with the Chateau's original interior design and colour scheme.

The stunning white salon room for example, has been painted using Crown Trade Acrylic Eggshell in two colours, 'old white' for the ceiling and 'Montvason blue' for the trim work. Both colours were specially mixed for Paul by the team in Brentford.

One of the key features of the Chateau's

exterior are its beautifully ornate wooden balconies. All the external balconies were brightened up with Sadolin Superdec in white, staying true to their original design and ensuring the balconies will continue to stand out against the masonry of the Chateau. Using water-based Sadolin Superdec, which is both self-priming and undercoating, the balconies will be protected well into the next decade thanks to its flexible finish.

Paul says: "The team at Brentford have been very helpful – the level of service is really exceptional and they were always happy to answer any of my questions and advise on the best products to use as I tackled each part of the project. In fact I've pretty much used Crown products throughout and I've been very happy with both the application and finish.

"Sourcing the perfect colours was really important as we wanted to make sure it was as in-keeping with the period as possible and the team at Brentford certainly delivered. I even took a piece of woodwork from the Chateau which they used to precisely match our paint to the colour of the existing paint."

## New build development benefits from quick rain resistance

When embarking on a new build housing development project of 63 detached properties, painter and decorator Nigel Wilkinson needed to ensure he was delivering a durable and high-quality finish across all properties, Nigel turned to Johnstone's Trade paints and used the new formulation of Stormshield Smooth Masonry for external work.

Johnstone's Trade recently conducted a survey and found that 71 per cent of decorators would say bad weather is the biggest problem when working on masonry jobs, with a third needing to postpone a booked job because of the threat of rain. Johnstone's Trade listened to this feedback and made changes to the popular water-based Smooth Masonry paint – equipping it with new Quick Rain Resistance technology, making it rain resistant after just 20 minutes. It can also be applied from temperatures of 2°C and rising, to allow for all-season application.

"I'm extremely impressed with the new Smooth Masonry – the paint is very workable and a great improvement," said Nigel. "It looks a lot thicker than before and initially we thought this might make it difficult to apply. Despite its thick appearance and consistency though, the paint was a dream to apply and flowed well from the roller onto the new, bare masonry."

With standard masonry paints, rain showers can often cause run-outs which can ruin the finish. However, the new Smooth Masonry paint from Johnstone's Trade works by improving the binding process to ensure new paint work quickly becomes rain resistant and delivers a smooth result.

## Brewers introduce 24 hour collection service

Decorators merchants Brewers has introduced a 24 hour collection service for busy professional decorators allowing them to pick up goods when they want to.

When ordering goods with their local Brewers, decorators will be sent a code (unique to their order) by SMS. This enables them to access a simple and secure lock box system located at the branch at a time that suits them.

The service is available at most Brewers Decorator Centres.







# CLEAN EXTREME

Look out for the Ultimate Opacity seal on our Clean Extreme packs, offering you the guaranteed assurance of our most high-quality covering paint.



IN ANY SPACE... STAINS LEAVE NO TRACE

Crown Trade helpline  
0330 024 0297

Email  
[info@crowntrade.co.uk](mailto:info@crowntrade.co.uk)

For more information on the Crown Trade range visit: [www.crowntrade.co.uk](http://www.crowntrade.co.uk)

It's not just paint.  
*It's personal.®*

## Bradite protects iconic Portmeirion



Portmeirion in North Wales is maximising its appeal to tourists while protecting itself from the elements with Bradite's specialist paints. Portmeirion was designed by visionary architect Clough Williams-Ellis after the First World War but it really achieved widespread iconic status when it starred as 'The Village' in the 1960s psychological thriller *The Prisoner*.

Bradite, whose factory is located some 35 miles away at Bethesda, Gwynedd, has been supplying Portmeirion with specialist coatings for a range of tasks since 2000.

Although the Italianate-style buildings were always captured on film in perfect, sun-drenched conditions, the village's North Wales location on the Dwyryd River, east of Ceredigion Bay, necessitates year-round, all-

weather protection.

Most recently, a variety of locations have been treated with products from the Bradite catalogue.

"The quality of the paint stands up well against the elements" says Portmeirion's Head Painter and Decorator, Martin Couture.

"Clough started off with mineral paint" says Martin, who has helped maintain the village for the past 40 years. "This Bradite paint is the nearest we can get to that, keeping as close to Clough's vision as possible."

The most recent work has included the sea defence wall, the walls leading back to the village from the swimming pool, the pool itself and the wishing well.

The outdoor swimming pool and surround has been protected with Bradite CC24 Chlorinated Rubber in Eggshell finish. The pool surround has been given Bradite's SA12 Low-Slip Aggregate for improved safety.

As one of the top tourist attractions in Wales, the village entertains around 200,000 visitors a year, some on day trips, others staying in one of two four-star hotels, cottages or apartments dotted around the site. Unlike the 'residents' in the original tv series these visitors are free to come and go as they wish!

[www.bradite.com](http://www.bradite.com)

## Countering tool theft

Tradespeople who have been victims of tool theft are having to replace up to £5,000 worth of tools and can lose up to two days of vital earnings, impacting both their professional and personal lives, a Screwfix survey has found.

After conducting research amongst their customers, 46% of respondents stated they have had their tools stolen, and 39% said they've had them stolen at least twice.

When it comes to protecting their tools, the majority of tradespeople said they take measures to keep their tools safe, with the most popular methods being 'removing tools from the van overnight' (26%) and 'installing CCTV' (18%).

One way in which Screwfix is showing its support is through tool marking. To further support, Screwfix is working with its suppliers to enhance its range, and the latest addition is Milwaukee ONE-KEY™. ONE-KEY is a digital platform that has been integrated into several premium products and enables you to easily pinpoint missing tools quickly. The tool can be remotely locked whilst in range of the ONE-KEY app, making it unusable, even if taken out of range. Screwfix's survey showed that 60% of tradespeople surveyed would be interested in buying power tools with this type of functionality installed.

## Wilmslow decorator set for summer

Michael Ludlow, owner of M.T. Ludlow Decorating Services, won 50 litres of the new and improved Johnstone's Trade Smooth Masonry paint and a Q-Tech QP019 spray machine in a social media competition organised by the Painting and Decorating Association (PDA) and Johnstone's Trade. To celebrate the launch of the new paint, social media followers were asked a question about the Smooth Masonry formulation and were entered into the prize

draw if they gave the correct answer.

Michael, who got the answer right, was drawn out of the hat and Neil Ogilvie, Chief Executive of the PDA, went to meet him at Johnstone's Decorating Centre in Macclesfield to present him personally with the prizes.

Michael said: "When I got the phone call to say I'd won I was delighted and couldn't wait to collect my prizes.

"This summer I have a large exterior project

coming up, so the masonry paint will come in really useful for that.

"The company has recently expanded, so I decided to become a member of the PDA.

"I think as we grow, membership is really important for the business, plus having their logo on display gives us much more credibility."

As well as the top prize being awarded, 50 runners up were given a Smooth Masonry t-shirt.





## RGB needs your tools!

RGB Building Supplies is delighted to have joined forces with South West-based charity Amigos and is inviting people to donate preloved tools, which will be used by young people in Africa to help them lift themselves and their families out of poverty.

Preloved hand, power and gardening tools can be placed in the collection bags in any of RGB's 20 branches. Amigos will then arrange for the donations to be collected, repaired and shipped to Africa.

The charity has been working in Uganda for nearly 20 years and for the last nine it has been providing vocational training. This includes conservation farming, carpentry, building and tailoring over a 12-month period, to up to 50 young people affected by war, HIV and abject poverty. The donated tools will be an instrumental part of this training, which helps to create vital apprenticeships and employment.

## Woodcare selection made easy



Following a major re-vamp of Sadolin's point of sale displays, trade professionals will now be able to see recommended products at a glance, with the brand's extensive range of woodcare solutions organised by the jobs they are most suited for. So whether you're dealing with decking, staining a shed or giving wooden flooring a facelift, you can quickly and easily find what you need.

Customers can take advantage of the new streamlined retail displays at Crown Decorating Centres nationwide, with the new point of sale design set to be rolled out to other Sadolin stockists over the next few months.

Sadolin's brand manager Sharon Smith said: "With so many woodcare products now available, it can be hard to know exactly which product is best suited to the job in hand and this is particularly true when it comes to woodstains. We appreciate that our trade customers are busy and yet need to be confident that the products they use are the most appropriate and effective - that's why we have made choosing and purchasing Sadolin even easier by organising them by project suitability."



Don't *just* decorate... **BEDEC-ORATE!**

**Innovators in Water-based Technology**

Bedec Products Ltd., Units 1 & 2 Poplars Farm, Aythorpe Roding, Dunmow, Essex. CM6 1RY

**Tel:** +44 (0) 1279 876 657

**Email:** [info@bedec.co.uk](mailto:info@bedec.co.uk)

**www.**[bedec.co.uk](http://bedec.co.uk)

The Dulux Academy logo features a stylized, multi-colored swoosh above the word 'Dulux' in white and 'ACADEMY' in gold. A small white figure is integrated into the 'x' of 'Dulux'.

# Dulux ACADEMY

Give the  
competition  
a pasting



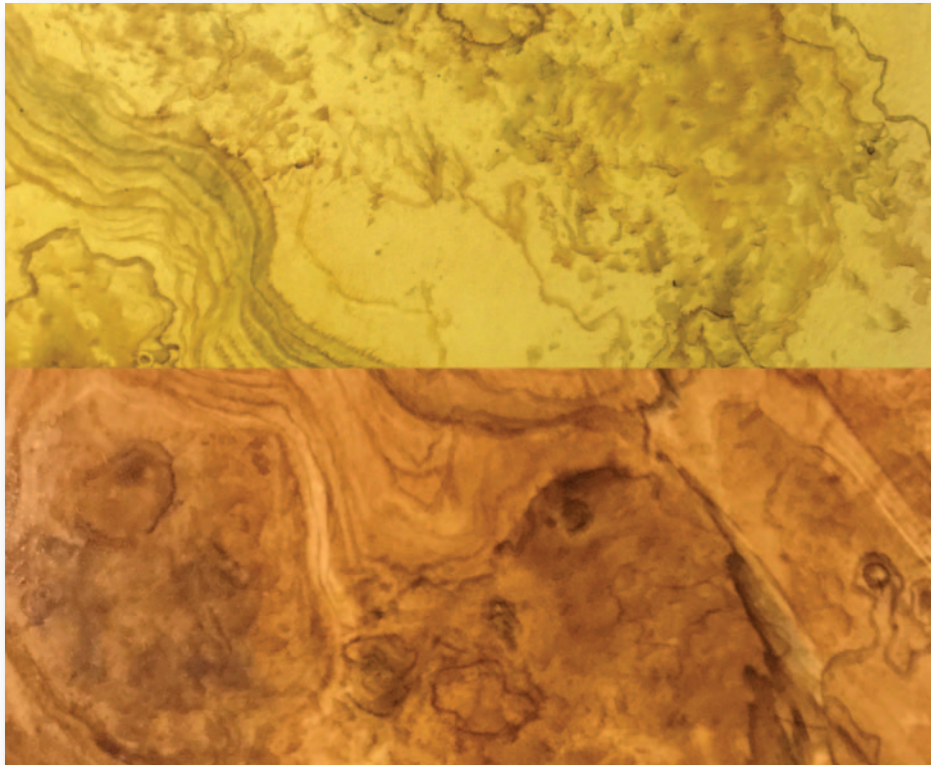
Our **Dulux Academy wallpaper courses** will give you the skills and confidence to master a wide range of wallpapering techniques, from **measuring and setting out**, **applying lining papers and finished wallpapers right through to digital murals**, **relief wall coverings and wide-width vinyls**, enabling you to offer the latest trends to your customers with stunning results.

[duluxacademy.co.uk](https://duluxacademy.co.uk)



# Burr Walnut

Cait is decorative painter working throughout UK and teaching from her studio in Perth, Scotland. You can see her work and connect with her on social media; Twitter and Instagram - @paintycait or Facebook - <https://www.facebook.com/carteblanchedecorativepainters>



With Mid Century furniture making a massive comeback, Burr Walnut has seen a resurgence in popularity and it's not only a pretty wood but a fun one to do. It is also an opportunity to discuss using beer glaze and my new oil glaze recipe. Beer and oil together improve the speed of layering materials, the beer is dry in 15 minutes and then an oil glaze can be used over the top.

## Ground

Many people use a caramel brown colour for a Burr Walnut ground but I like a golden colour that allows numerous layers to be worked without losing definition. Here I've used Benjamin Moore's Citrine AF-370, similar to BS 08C35. The graining colours for burr walnut are usually Vandyke brown and Black although I like to add Burnt Umber, Viridian and Ultramarine Blue.

## Beer Glaze

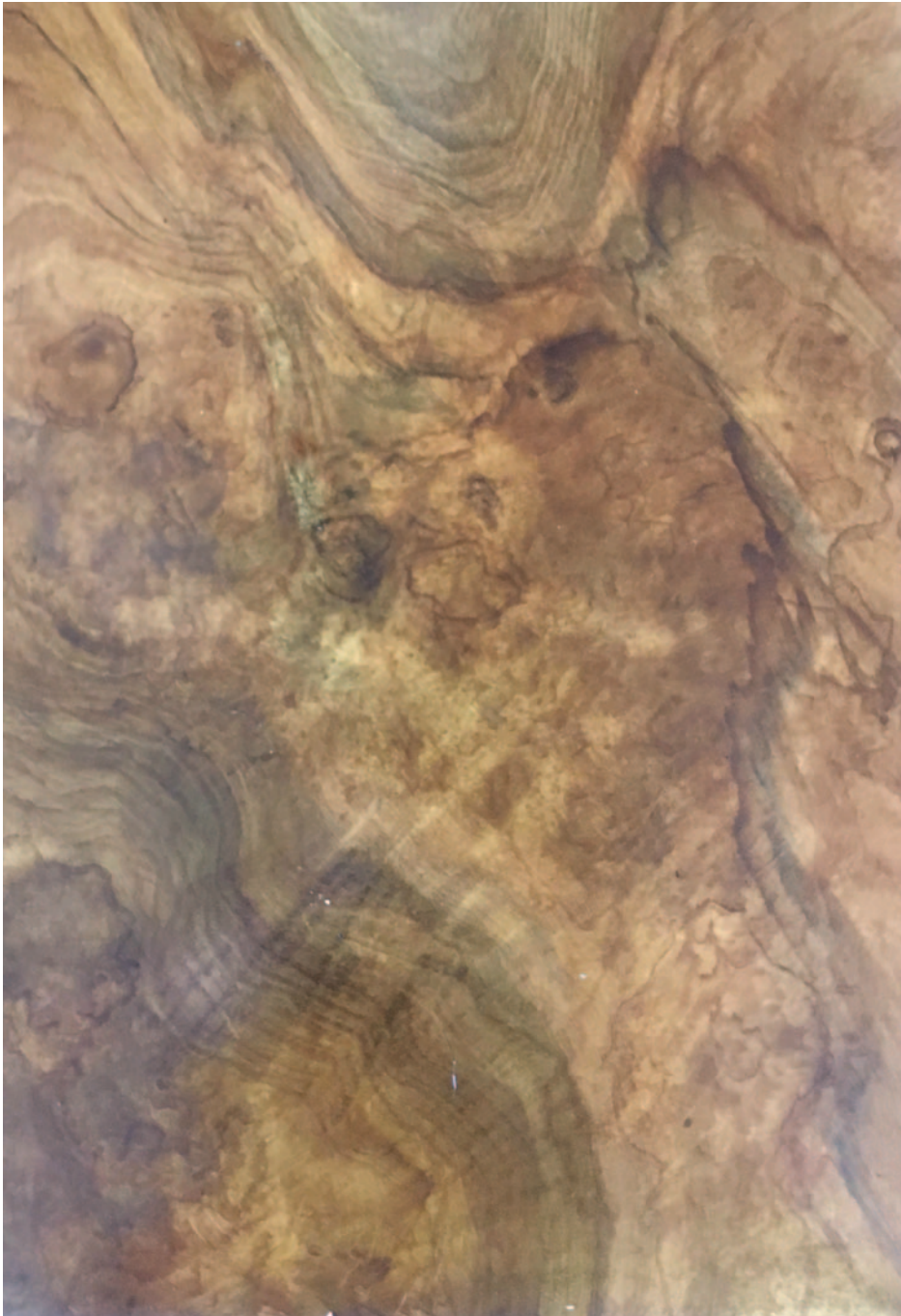
To create the shapes of the burrs initially and set up my composition I use a reversible glaze. To make a reversible glaze you can use dextrin, vinegar or my preferred medium stale

beer. A reversible glaze is one that it is water soluble when dry; once the glaze has dried it can be reverted back to its liquid state or worked up by using wet tools or brushes. Using stale stout mixed 1:1 with water add some burnt umber water colour, gouache or poster colour. I prefer gouache because of the quality of pigment. Sand the surface and degrease with some whiting and then rub in a thin film of colour, soften this with a badger and then stipple and flog it lightly with the badger. Add to your initial glaze some Vandyke Brown and a touch of Black, then take a natural sponge dampened with this glaze and dab onto the surface on the area that require burrs. Using the badger ease the damp spots into a pleasing shapes. Use an overgrainer dipped in the beer glaze to create grain and define the groups of burrs; you can also use a pencil writer to add in areas of detail. Soften gently as you go. You can add in a little Viridian or Ultramarine to your mix if appropriate

## Oil Glaze

Remember that if your brush or tools are even slightly damp, you will reactivate the beer, so everything must be dry. My new mix uses Osmo Polyx Oil and gilp 1:1. The gilp is 1 part Raw Linseed Oil, 3 parts White Spirit plus 10% Terebine driers. The Osmo makes it set up nicely, and I'm in love with the way it behaves. Apply





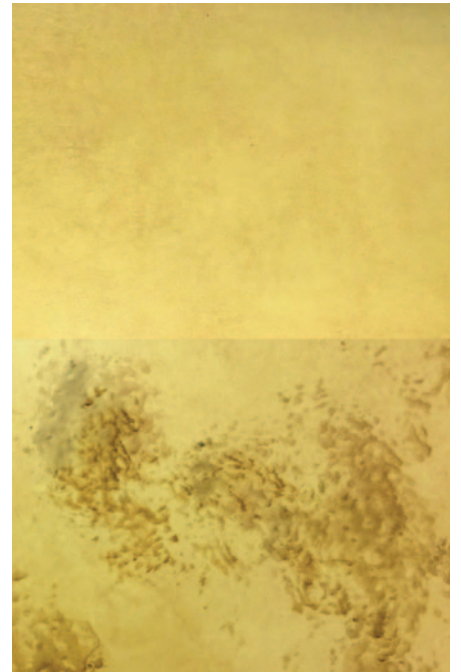
a thin layer of oil glaze and add in Vandyke Brown and Black artist's oil colour to define the burrs and enhance the grained areas, lift out highlights and create mottles as desired between burrs with a camel cutter. After adding a little extra colour to some of the glaze take a sable writer and run around the edges of the prominent burrs or add more detail. Use a small softener to tease the glaze into a pleasing form and

finally soften all over.

### Overgraining

Overgraining colour depends on the result required however usually it is Vandyke Brown. In this piece I added a little Black and Viridian. For overgraining I use neat Osmo Polyx Oil. It has a long open time, softens beautifully and means that the first coat of varnish is done!

Apply a thin layer of the Osmo as if it

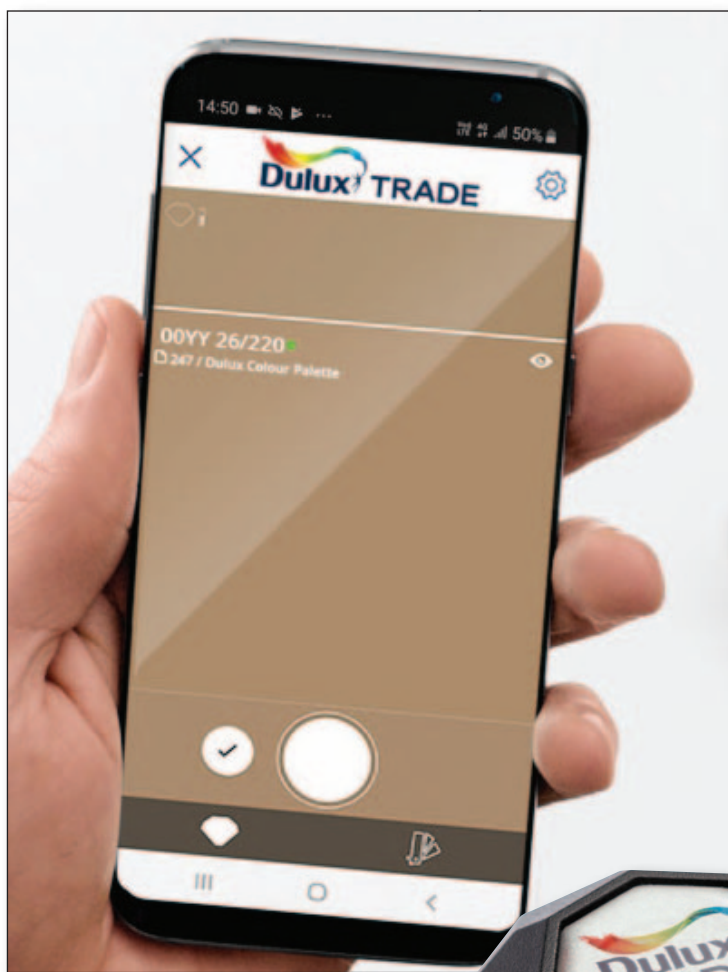


were glaze, I work from the tubes and add colour as required and then use a cutter to create suitable movement around the burrs. Once dry varnish with Osmo in your choice of sheen.

For my last burr walnut project the work had to be done away from what I was matching so I carefully tested my colours of gouache and glaze before leaving site. You can see the sample I created below the image of the tools and materials. Have fun!!

# The Dulux Trade Colour Sensor

A new piece of kit from Dulux Trade take can take a read on a colour and then, almost immediately, give a colour reference to which the tone can be mixed. It's called the Dulux Trade Colour sensor.



Dulux Trade has just launched a must-have piece of kit for decorators to allow them to match the colour of multiple surfaces to Dulux Trade paint on the spot.

The bespoke Dulux Trade Colour Sensor has been adapted for Dulux Trade paints to give far greater accuracy.

The device, which is the approximate size of a 50 pence piece and weighs only 17 grams, will instil confidence for professionals to make colour recommendations and looks set to become an essential new gadget in the tool box.

The colour sensor works by scanning for the desired colour - whether it be a favourite item of clothing, a cushion, or a picture of a sunset in a magazine - and showing the closest Dulux Trade paint match via Bluetooth on the Dulux Trade Colour Sensor app that can be downloaded free to a phone or tablet.

The app also shows a selection of rooms painted

The durable sensor contains an integrated, rechargeable battery which provides more than 3,000 scans per charge.

The pocket size sensor is an additional on the job support to compliment other Dulux Trade colour tools including the Dulux Trade Colour Palette Fandek, curated Dulux Trade colour palettes in stores and high precision colour matching.

Karen Wilkinson, Dulux Trade Marketing Lead, said: "We are delighted to be able to offer our own colour sensor to decorators. It is the culmination of a significant investment to make their working lives more efficient and help them to confidently select the best colour for their needs.

"The colour sensor costs much less than other colour scanners and enables decorators to match Dulux Trade paints with incredible accuracy to give them an edge over competitors.

"Being able to offer colour matching on site will help decorators to demonstrate professionalism and win more business from existing and new customers."

The introduction of the colour sensor comes as Dulux launches its Dulux Promise, a commitment to professionals that Dulux Trade products will deliver perfect colour, a uniform finish and the stated coverage, or else receive vouchers to cover the cost of replacement products.

The Dulux Trade Colour Sensor will be available for purchase in store and online at Dulux Decorator Centres and other participating decorating merchants across the UK.

**For more information, visit:**  
[www.duluxtrade.co.uk/sensor](http://www.duluxtrade.co.uk/sensor).



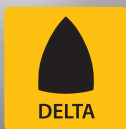
in the colour to give customers higher confidence levels and ensure every customer is satisfied with the resulting job.

It costs £150 but is so neat and, scans so quickly, it certainly doesn't seem overpriced once you've tried it.



**MIRKA**

**CLOSER.  
FOR PERFECTION.**



**IMAGINE  
THE PERFECT  
SURFACE.**

**Mirka® DEOS** 

**Flawless from corner to corner**

The new Mirka® DEOS Delta 663CV electric sander enables you to obtain a flawless end result easier and faster than ever before. Weighing less than 1kg and just 10cm high you can reach comfortably into tight spaces.

Mirka® DEOS Delta boasts smart Bluetooth technology with an integrated vibration sensor allowing you to monitor vibration levels while sanding.

For further information or to arrange a demonstration, please contact Customer Services on 01908 866100

**[www.mirka.co.uk](http://www.mirka.co.uk)**



# ProDec's Ice Fusion Brush – *it's all in the taper*

When ProDec started developing the Ice Fusion brush the object was make achieving a top-quality finish easier and quicker.

To do that it invented new technology - Shard filaments and Form Recovery Technology.

Standard synthetic filaments are shaped like cylinders that taper to a fine point near the top so, whilst you get a brush-mark free finish, there's little space between filaments and much of the paint can tend to load near the top of the brush, meaning it can be dumped onto the surface at once and require working out. ProDec's Shard filaments taper from the base all the way to the top so there's more space between filaments for paint to load up the brush, which makes for more even loading and smoother release, requiring less working out.

Form Recovery Technology uses semi-elastic polymers to make the Shard filaments, which means that when they're bent during application or washing, they spring back into shape. This also enables the brush to hold a razor-sharp cutting line.

Plus, Ice Fusion's seamless ferrule isn't just about looks: with nowhere for paint or wash water to collect, it solves another common



issue that tradesmen experience.

Ice Fusion is available in 1", 1.5", 2", 2.5" and 3" sizes as well as a three-piece set and is stocked in national and independent decorators and builders merchants.

## Working in partnership with the Decorators Forum

We wanted to develop a brush that the trade would want to use, which is why we teamed up with review team at The Decorators Forum to test Ice Fusion during its development. They put the brushes through their paces with rigorous on the job testing and were so impressed that they've given Ice Fusion their formal endorsement - the first paint brush ever to have achieved this.

Gary Bent, Marketing Manager for ProDec, commented, "Like the roller before it, the Ice Fusion brush has technology that gives real benefits to decorators. With the superb feedback from The Decorators Forum testing panel, it's exciting to know that the trade rate it so highly."

[www.prodec.uk.com](http://www.prodec.uk.com)



# coo-var®

**NEW  
PRIMER!**

## **Power Floated Floor Primer**

Assists Adhesion Direct to  
Power Floated Floors ✓

Eliminates the Need for Costly  
Shot Blasting or Grinding ✓

Solvent Free, Two Pack Epoxy System ✓

Low Odour ✓



# A modern take on a traditional finish



Providing a mid-sheen appearance, eggshell paints are anything but ‘middle of the road’ and the enduring popularity of this stylish finish makes it the ideal choice for a variety of projects. Lindsay Hall, brand manager for Crown Trade, explains how the new generation of eggshell paints can offer a touch of class to walls and woodwork, and a finish that is as durable as it is decorative.

Boasting a soft low sheen appearance that as the name suggests, resembles that of an eggshell, this type of paint is one that is often associated with classical and heritage décor styles. However, thanks to its hardwearing and wipeable finish, eggshell paint is also ideally suited for use in busy modern homes where a low maintenance and long-lasting solution is always preferred. There’s no doubt that eggshell is a popular and versatile choice but how do you know if it’s the best fit for your next contract? Here are just some factors to consider to help you start out with the right finish.

## Traditional trims

When it comes to painting interior woodwork, a high sheen gloss paint has traditionally been the product of choice as it can easily be cleaned and offers a tough finish that is highly resistant to scuffs and marks. As a result, shiny white glossed skirting boards, door frames and windowsills are a common sight. Although this remains a very effective solution, today’s design-savvy customers are increasingly looking at other options and with the trend for vintage and historical-inspired interiors

continuing to dominate, eggshell trim paints are really coming in to their own.

Offering a stylish alternative to a high gloss finish, the subtle sheen of eggshell looks great on interior woodwork and perfectly complements a heritage-style colour palette and flat matt, chalky walls and ceilings. For best results, choose an eggshell paint that has been specifically developed for use on interior wood and metalwork, such as Crown Trade’s new Fastflow Quick Dry Eggshell.

As paintwork can and does get dirty,





# kana®

# TANK

LESS DIPPING MORE ACTION

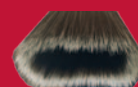
INNOVATIVE 2 IN 1  
COMBINATION OF NATURAL  
BRISTLE TANK WITH  
SYNTHETIC BRISTLE COAT

COVERS 30% MORE  
SURFACE WITH JUST  
ONE DIP

FINE SURFACE  
FINISH WITH FINELY  
TIPPED BRISTLE

#### SIZES

30mm (1"), 50mm (2"),  
75mm (3")



Natural Bristle Paint Tank

# STAR

PERFECTLY BALANCED  
100% SYNTHETIC  
BRISTLE MIX

SUPERIOR BRISTLES  
FOR EXCELLENT PAINT  
LOADING & RELEASE  
FOR A FINE FINISH

UP TO 5 TIMES  
LONGER LIFE THAN  
STANDARD BRISTLES

#### SIZES

30mm (1"), 40mm (1.5"),  
50mm (2"), 75mm (3")



## Ciret Ltd.

WWW.CIRET.CO.UK  
+44 (0) 2392 457450

TO FIND YOUR LOCAL STOCKIST PLEASE CONTACT  
MARKETING@CIRET.CO.UK

**ROTA!**

kana®

masq® prep®





as flat as matt, the attractive low-sheen finish of eggshell makes it the ideal choice for both domestic and commercial buildings. Perfectly balanced, an eggshell finish can mask any imperfections but will reflect enough light to accentuate the colour scheme and also maximise the sense of space. As a result, eggshell paints are

perfect for small rooms.

Where eggshell paints are most effective however is in rooms that require frequent cleaning, such as kitchens and bathrooms, as an eggshell paint finish can be easily wiped clean. For even greater performance and peace of mind in high-traffic areas, Crown Trade's Clean Extreme Stain Resistant Acrylic Eggshell offers a tough washable finish that not only allows marks and blemishes to be

washed away, but can also help prevent stains forming in the first instance.

## Simple solutions

Traditionally an oil-based product, the new generation of eggshell paints are ideally suited to the needs of the modern decorator as there are water-based options now also available. These new water-based eggshell paints, like Crown Trade's Clean Extreme and Fastflow range, offer all the traditional benefits of the classic finish with the added advantage of being quick-drying and low-odour. Whatever your project and whatever your individual preferences, eggshell paints are well worth a closer look and your local paint stockist or decorating centre will be happy to help you find the perfect solution.

For more information and to find your nearest stockist, please visit [www.crowntrade.co.uk](http://www.crowntrade.co.uk), email [Info@crowntrade.co.uk](mailto:Info@crowntrade.co.uk) or call 0330 024 0297. You can also follow @CrownTradePaint on Twitter, CrownTradePaint on Facebook or Crown Paints on LinkedIn.

particularly in high-traffic areas, the use of an eggshell finish for trim areas is also a great practical solution. High gloss finishes will always have the edge when it comes to durability but the hardwearing and washable characteristics of eggshell also makes it a good choice.

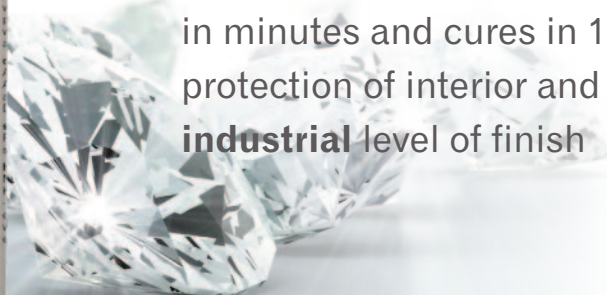
## Wonderful Walls

Eggshell is also popular for broad wall areas and ceilings. Less reflective than silk but not

the varnish experts

# launching our little diamond... heavy duty extreme varnish interior and exterior

the strongest of all one-pack varnishes that dries in minutes and cures in 16 hours for the ultimate protection of interior and exterior surfaces to an **industrial** level of finish



find us in store or online at [polyvine.com](http://polyvine.com)

# THE LITTLE ONE-HAND SANDERS

with speed control and PES filter cartridge in set



## DELTA SANDER

### ODE 100-2 set

- 200 watt
- 8000-13000 rpm
- 16000-26000 opm
- Orbit 2 mm
- Only 1.2 kg
- Including sanding paper 1 x P 80 and 1 x P 120
- External dust extraction Ø 27 mm



SMALL SURFACES AND EDGES



## PALM SANDER

### OSE 80-2 set

- 8000-13000 rpm
- 16000-26000 opm
- 200 watt
- Orbit 2 mm
- Only 1.2 kg
- Including sanding paper 1 x P 80 and 1 x P 120
- External dust extraction Ø 27 mm



CORNERS AND EDGES

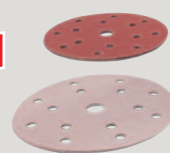
## RANDOM-ORBIT SANDER

### ORE 150-5 set

- 350 watt
- 5800-10000 rpm
- 11600-20000 opm
- Orbit 5 mm
- 2.1 kg
- Including sanding paper 1 x P 80 and 1 x P 120
- External dust extraction Ø 27 mm



ROUND SHAPES



## SUPRA FLEX

### SE 14-1 125 Set

- 1400 watt
- 600-2100 rpm
- Ø 125 mm
- 2.6 kg



## SAFETY VACUUM CLEANER

### VCE 26 L MC

- 1250 watt
- 3600 lpm
- 21000 Pa
- Container Volume 25 l / Wet vacuuming 16 l
- 8.4 kg



For more information please contact

Stuart Colclough

PO Box 192, Darlington DL1 9FN  
Phone +44 (0) 1 325 741793  
Fax +44 (0) 1 915 045133  
Mobile +44 (0) 77 909 90682  
[uk.sales@flex-tools.com](mailto:uk.sales@flex-tools.com)

**FLEX**  
Das Original



# Dulux supports UK trade professionals with launch of Dulux Promise

If colour, quality or coverage is not right Dulux promises to put it right.

A new Dulux Promise icon is on cans of Dulux paint in trade and retail accounts nationwide, but the icon will mean different things to different customers. For professionals, the Dulux Promise will instil confidence for professionals, knowing their customers will be happy with their work.

In practice, the Dulux Promise is a commitment to professionals that Dulux products will deliver perfect colour, a uniform finish and the stated coverage, or else they will receive a voucher for a replacement product.

For professional painters and decorators, the Dulux Promise brings together commitments across five key points:

1. Quality products that meet the needs of today's trades professionals, across coverage, colour matching and consistency
2. A firm commitment to investing in science and innovation, developing new coatings that will meet the future needs of trades professionals
3. Best in class product and advice teams with market leading insight into changes in professional requirements, and an agile approach to solving challenges efficiently, to provide the right products for every job
4. Responsibility for each other and the environment. Investing in the training and development of trades professionals and supporting initiatives that allow Dulux to add colour to the lives of the communities it works in
5. Investment in Colour Leadership with a colour delivery programme due to launch in September 2019, to ensure every customer is satisfied with the resulting colour.

The new initiative will apply to Dulux Trade Vinyl Matt and Flat Matt, as well as Diamond Matt



and Diamond Eggshell products over 500ml.

The launch of the Dulux Promise to trade professionals will be supported in merchants with new point of sale materials in-store and dedicated communications across social and digital channels - including a TV advertising campaign.

Kathryn Ledson, Marketing Director, Dulux UK, said: "The introduction of the Dulux Promise follows a significant period of investment in making improvements across the business to best support the professional market.

"Our production site in Ashington has delivered significant improvements in product quality with rigorous testing of colour, consistency and coverage. All of our sites are committed to the highest standards of quality control, through regular on-site testing. What's more, every year we undertake more than

100,000 quality tests on over 150 million litres of paint to ensure that our products meet the standards expected of us.

"The technical and innovation teams have also redeveloped the Dulux Trade Diamond Matt and Eggshell range and independent tests show it is now 50 times more durable than a standard trade emulsion. The team invest, on average, three years in bringing a new coating to market and the innovation pipeline is bursting with opportunities.

"More than 5,000 trades professionals have now attended a course at our Dulux Academy and last year our Community Repaint project helped to divert 300,000 litres of paint out of landfill and towards local good causes.

"We are constantly exploring new ways to give every professional decorator a brilliant finish that lasts, and we're so confident in our quality that the launch of the Dulux Promise™ is another way in which we're putting our name and products to the test.

"The Dulux Promise is designed so that decorators can be confident in customer satisfaction, so they don't need to return to the same job. With the right application, professionals can use Dulux Trade products safe in the knowledge that their work is protected, and of the quality that we know is so important for their reputation.

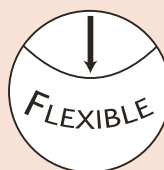
Professional decorators can submit a claim under the Dulux Promise by contacting the product experts at the AkzoNobel Customer Advice Centre, providing proof of purchase, description of the issue, photographs of product on the surface and a batch number. The products will not normally need to be returned as part of a claim.



# FLEX-E-FILL



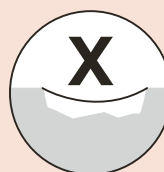
*"A lightweight premium pre-mixed filler that repairs and smooths in just one coat!"*



Prevents  
reoccurrence of  
hairline cracks



Very fast drying



Does not shrink



Contact us for information on your nearest stockist:



info@axisdecor.com



020 8204 1422



www.axisdecor.com



**NEW COMBO CARGO**

**£168<sup>†</sup>**

**A MONTH**

**6 YEARS 0% APR\***

**18% DEPOSIT + VAT (£5,543)**



**CARRIES BRITISH BUSINESS**

Official Government Test Environmental Data. Fuel consumption figures mpg (litres/100km) and CO<sub>2</sub> 72.4 (3.9), Combined 67.2 (4.2) CO<sub>2</sub> emissions: 111g/km.<sup>#</sup>

Model shown is New Combo Cargo, 2000 1.5 Turbo D 75PS Edition at £168.00 per month and requires a 18% deposit (plus VAT on total transaction value) totalling £5,542.60. Small business users only. All Finance, CF15 7YT. \*6 years 0% APR offer with minimum 18% deposit (plus VAT on total transaction value). Offer available on orders or registrations from 5 July to 3 October 2019. All offers available to small to allow the comparability into NEDC. The values do not take into account in particular use and driving conditions, equipment or options and may vary depending on the format of tyres. For more

# IT'S AWARD WINNING.



**VAUXHALL**  
British Brand since 1903

emissions (g/km). New Combo Cargo, 2000 1.5 Turbo D 75PS Edition. Urban 60.1 (4.7), Extra-urban

other customers are excluded. Offer subject to availability, on selected models at participating Retailers only. Conditional sale. Finance subject to status. Ts&Cs and exclusions apply. 18+. Finance by Vauxhall businesses 1-49 units (purchase only). All other customers are excluded. \*Fuel consumption data and CO<sub>2</sub> emission data are determined using the WLTP test cycle, and the relevant values are translated back information contact your local Retailer. Vauxhall Motors Limited reserves the right to change, amend or withdraw this offer at any point in time. Correct at time of print.



# National Painting and Decorating Show 2019

## RICOH ARENA, COVENTRY 26 – 27 November

### It's *the* place to Build a Better Business!

Now in its 25th year, the National Painting and Decorating Show is the industry's major trade event.

Every year professional decorators and contractors make their way to Coventry's Ricoh Arena to see the latest in product innovation, as well as the colours, trends, textures and techniques driving today's decorating market.

For visitors, it's a great networking opportunity to meet exhibitors, exchange ideas and solutions with other decorating pros, and discover new ways to boost business and profits.

Every product sector is represented – from paints and wallcoverings to decorating tools and sundries to woodcare and decorative effects, and everything in between.

Again this year, the show will be a hive of activity, buzzing with product launches, demonstrations, theatre sessions, seminars, show-only deals, free samples, how-to information, competitions, raffles and prize draws.

The theme of this year's show is 'Build A Better Business.' Special seminars sponsored by Painting & Decorating News Online, and

Build a Better Business

Visit  
26 – 27 November 2019  
RICOH ARENA,  
COVENTRY

THE NATIONAL  
PAINTING AND  
DECORATING  
SHOW

For FREE tickets GO TO [www.paintshow.co.uk](http://www.paintshow.co.uk)

will provide visitors with plenty of top tips and info to help maximise productivity and profitability. From making the most of social media to implementing professional training programmes, and from efficient spray painting to the

latest in health and safety, find out how your approach to these topics can maximise your business. So if you're looking to build a better decorating business, this is the event for you! Pre-register today at: [www.paintshow.co.uk](http://www.paintshow.co.uk)

**DOORS OPEN**  
**9:30am – 4pm**

### What's new in decorative effects?

Following their successful debut last year, the two Decorative Effects Theatres will be back in action again for 2019. Check out this special show feature where you can watch and learn from the pros about the latest decorative effects and how you can achieve them.

### TAKE A DIP! You win!

As you shop the show, viewing the hundreds of products and brands on display, watch out for the ever popular Lucky Dip. Every dip into the bucket wins a prize, so be sure to have a go at grabbing some really useful gifts and great promo items.



### Hitting new heights

HighTower's telescopic bucket system ensures hassle-free painting at ground level and at heights. The all-in-one, quick-release roller tray and paint bucket includes a painting tool tray, roller grid and paint brush magnet.

### 4-PAGE PREVIEW STARTS HERE!



### Windows on the world from Brume

Brume's inspiring range of window films and glass signage can transform any clear glass window to provide extra privacy, security and style without sacrificing natural light.

**FREE TICKETS @ [www.paintshow.co.uk](http://www.paintshow.co.uk)**

### Play your card right...



The Brewers Goodie Bag is back and better than ever, plus an offer of 15 litres of free paint, available to all existing account customers or new customers opening up a Brewers Card.

“Coverage was better than any paint I’ve ever used! It looks like an emulsion in the tin, went on like a rock... recommended to anyone”.

– Allan Aldo Clark, Decorators Forum

Recommended on



**ENOUGH SAID**

**ALLCOAT**<sup>®</sup>

all surface exterior paint from



[zinsseruk.com](http://zinsseruk.com)

#whatsyourproblem



## Mirka expands sander range

Mirka will demonstrate the versatility and efficiency of its new Mirka® DEOS Delta sander, designed to access hard-to-reach areas, as well as its lightweight Mirka® LEROS sander for use across multiple surfaces.



## Ricoh Arena is where it's at!

With its on-site hotel, restaurants and bars, the show venue is easily accessible by road, rail and air: a two-hour drive from 75% of the country; plenty of on-site parking; Birmingham Airport a short drive away; and an on-site train station providing an hourly service between Coventry City station and Ricoh Arena.

## Happy Anniversary PDA!

Congratulations to the Painting and Decorating Association as it celebrates its 125th anniversary this year. The UK's largest trade and employers' association in the painting and decorating industry has members throughout the country. Visit the stand to find out more.



**ENTRY TO THE  
SHOW IS FREE.  
REGISTER  
TODAY!**

## Have a nice spray . . .



Great last year, even better this year! Aristospray says its stand will offer decorators plenty of opportunities to try out the latest HVLP and airless sprayers from QTech.



## Osmo brings wood alive

Osmo UK, supplier of naturally friendly wood finishes, invites visitors to drop by the stand and speak to industry experts, watch live demos and learn best practices when applying Osmo.

## Bradite takes to the floor...

**BRADITE**

Following on from the success of One Can, Bradite will be launching a fast-drying, water-based floor paint at this year's P&D show.

## Cullen's new packaging protects tins in transit



Cullen's new moulded pulp paint tin fitments are an eco-friendly way to reduce damage to paint tins while in transit. Made from recycled paper, they're recyclable, compostable and biodegradable.

## tesa has the edge at the 2019 show

Alongside its Precision masking tapes for indoor, outdoor and sensitive applications, tesa will be demonstrating the very latest EasyCover® range at this year's show on stand 74.



**www.paintshow.co.uk**





Deltec Masking Tape Extreme vs Standard Masking Tape

**Deltec Masking Tape Extreme**

# THE STRONGEST COLOUR TO PAINT WITH



**FREE TRIAL PACKAGE**  
[deltectape.com/extreme-sample](http://deltectape.com/extreme-sample)



## A PRO KNOWS



[DELTECTAPE.COM](http://DELTECTAPE.COM)







## Function and practicality for you from Dexters

Dexters is all about innovative workwear – designed by professionals, for professionals. The company will showcase its modular workwear trouser featuring a unique and interchangeable pocket system.



## Get close up and personal with Timbabuild!

Located at the heart of the exhibition, Timbabuild's stand is designed with practicality in mind, allowing visitors to get as close as possible to the demo table where demonstrations will run throughout the day.



### It's in the bag!

**Each day the first 1000 pre-registered visitors to arrive at the show will receive a complimentary product-packed DecoBag!**

## A world full of colour



This year, Dulux Trade is showcasing its developments in the world of colour, while the Dulux Academy team will be on hand to discuss their courses and how they can support a decorator's business.

## Get it right first time with 3M

3M says, 'It's our job to help you do yours – faster, easier, better and safer.' Designed with the professional decorator in mind, 3M products provide the tools to get the job done right, first time.



**3M Science. Applied to Life.™**

## Festool makes it 'easy'

Festool will be back with its premium quality power tools and dust extractors. The stand will feature a mix of sanders, including the long-reach Planex Easy, perfect for dry walling needs, as well as demos by the experts.



## Watch and learn!

In the two centrally located MasterClass theatres, sponsored by Packexex, practical presentations and demos will take place every 30 minutes. So take a seat and watch the experts in action as they demonstrate some time-saving tricks of the trade, the latest decorative effects, and much more!



## Take a break!

With so much to see, you'll welcome a break in the CoffeeZone, sponsored by Crown Decorating Centres, where you can plan the rest of your day to make the most of your time at the show.







AkzoNobel

THE  
COMPLETE  
PAINT  
RANGE FOR  
ANY JOB.



 **JOB DONE!**



THE NATIONAL  
**PAINTING AND  
DECORATING**  
SHOW

# Here are just some of the exhibitors and brands you will see at this year's show

## Daily Draw for FREE Training Course



Repair Care International's products offer a complete system approach to sustainable window and timber repairs, which significantly reduces maintenance costs and extends maintenance cycles. You will have a chance to try out the system yourself as the exhibitor will be holding a daily draw for a contractor training course for one trial pack with an upgraded heavy duty dispensing gun!

## 'Intelligent' finishes from Little Greene



Little Greene will show its ground-breaking range of water-based finishes designed especially for busy people. The company will introduce three new finishes: Intelligent Floor Paint, Intelligent Satinwood and Intelligent ASP.

**3M**  
**AJ Systems (Corona)**  
**Akcali Boya**  
**Alliance Workforce**  
**Artex**  
**Aristospray**  
**Axus Décor/Olfa**  
**Barrettine**  
**Bedec**  
**Benjamin Moore UK**  
**Big Wipes (Sycamore UK Ltd)**  
**Blue Dolphin Tapes**  
**Bradite**  
**Brewers Decorator Centre**  
**Brume**  
**Brush Mate**  
**Ciret**  
**Coleman Bros**  
**Coo-Var**  
**Craig and Rose**  
**Crown Decorating Centres**  
**Crown Paints**  
**Cullen**  
**Deltac Tapes**  
**Dexter Workwear**  
**Dulux Trade**  
**Dulux Decorator Centre**  
**Earthborn**  
**Eco Ezee**  
**Farrow and Ball**  
**Festool**  
**Flex Tools**  
**Fluxaf and Lacq**  
**Frog Tape**  
**Go Paint**  
**Graphenstone UK**  
**Hamilton**  
**Harley Brush**  
**Hightower Painting Products**  
**Hippo/Filltite**  
**Indasa Abrasives**  
**Independent Decorators Merchants Group Display**

**Kolorbond**  
**Liberon**  
**Little Greene Paint Co**  
**London Decorators Merchants**  
**Lyte Ladders and Towers**  
**Mirka UK**  
**Muraspec**  
**N.Smith Packaging and Display**  
**Old Fashioned Milk Paint**  
**Osmo UK**  
**Packexe**  
**Painthouse**  
**Painting and Decorating Association**  
**Painting and Decorating News**  
**Painting Craft Teachers Association**  
**PaintTech Training Academy**  
**Pioneer Brush**  
**Plastikote**  
**ProDec**  
**Professional Painter and Decorator Magazine**  
**Q1 Premium Masking Solutions**  
**Repair Care International**  
**Roll Roy**  
**Rupes**  
**Rustins**  
**Shield Quality at Work**  
**Smith & Rodger**  
**Sprayman UK**  
**Staalmeester Brushes**  
**Storteskens**  
**Teknos Pro**  
**tesa uk**  
**Tikkurila UK**  
**Timbabuild Epoxy Wood Repair**  
**Titan - Gray Campling**  
**Trimaco**  
**Univar Specialty Consumables**  
**Uniwipe**  
**Wagner Spraytech**  
**Werner**  
**Workman Workwear**

## More from Shaw

For its fifth year at the show, and following the successful launch of Benjamin Moore Scuff-X in 2018, Shaw Paints will demonstrate more breakthrough innovations at this year's event.

## Brush Mate unveils its new image

Brush Mate says that after having the same label for what feels like forever, the company will reveal its revamped Trade 20 and Trade 4+ labels at the 2019 Event.

*Refuel as you tour  
the show with a quick  
bite in the Axus  
Décor café.*



## Grand unveiling as Hamilton returns

Hamilton is back at the show, showcasing its range of painting and decorating tools. There will be a grand unveiling, as well as other exciting new developments. It's all happening on stand 15.





# CLEAN YOUR ACT UP!

Double Sided | Absorbent | Powerful | Kind to Hands

Also Available in Handy Packs of 40





# Mobility to the power of three

For an organised workplace and safe transportation of tools and accessories the new generation of Systainer offers mobility with practical and smart functions. The new Systainer<sup>3</sup> was developed by Festool in cooperation with bott, the specialist in vehicle equipment, and fits into new bott vario3 vehicle equipment range.

Any of the trade who have visited the National Painting & Decorating Show will be acutely aware that there are more and more tools and kit available to help get the job done to the highest possible standards. And within the toughening world of health and safety for both domestic and commercial contracts requirements are high, especially in areas such as dust extraction. Good 21st century practice, though, creates its own specific problem. How to store everything in the first place and get it on site. A sophisticated tool box is the obvious answer.

Festool recently held a significant European launch of the latest version of Systainer which has been upgraded and made compatible with Bott, a company that specialises in racking out vans.

All tools and consumables in the new Systainer<sup>3</sup> can be integrated into the bott vario3 vehicle equipment range, remaining clearly organised while stowed and always within easy reach, whether in the workshop, on the move or at a construction site. At the same time, with the Systainer<sup>3</sup> in



combination with the bott vario3 vehicle equipment, which enables easy loading and unloading, you can be on the move much more quickly, saving you time and money.

Festool has also added a new Systainer<sup>3</sup> Organizer for neat and tidy storage of small parts. It is available in two different sizes and has a transparent cover so you can easily identify the contents. There are seven different sizes of small parts boxes. With the T-LOC one-handed operating element, both new products can easily dock onto another new product: The Systainer<sup>3</sup> roll board. It comes with four handle options as well as practical feedthroughs for straps and, with its load-carrying capacity of up to 100 kg, is ideal for mobile use. The new Systainer<sup>3</sup> can also be connected to other Festool system accessories, such as the mobile dust extractor.

"The Systainer has always been more than just a toolbox. It's an important module in our Festool transport and storage system, which we are constantly expanding and further developing. But the new Systainer is significantly more versatile in terms of application areas," explains Oliver Seeger, Product Manager for Systainer at Festool.

"With the help of the T-LOC operating element, the Systainer<sup>3</sup> and many other system products – including the older Systainer generations – can be connected together. In addition, thanks to integrated mounting rails, it can now fit seamlessly into the new bott vario3 vehicle equipment. This means you are also safe when you are travelling as no unsecured items can fly around. Everything stays in its place, even in the event of an accident. Safety is the top priority for all of our products."

The number "3" not only indicates the third generation of the Systainer, which has been established in the professional trade sector since 1993, but also the three application areas: Workshop, transport and construction site. The system is also fully downwards-compatible with all older Systainer models. In addition, the Systainer<sup>3</sup> system is available in a range of widths and heights. The three low Systainer<sup>3</sup> variants have a handy front carrying handle, allowing them to be carried ergonomically, close to the body.

The new Systainer<sup>3</sup>, Systainer<sup>3</sup> Organizer and Systainer<sup>3</sup> roll board will be available from specialist retailers in the first half of January 2020.





# **An exceptional finish starts with perfect masking.**

Q1® Premium Masking Solutions  
for professional painters.



# Decorating solutions

from Axis Decor

## Flex-E-Fill MX – One coat repair and smooth

Our diverse range of fillers & smoothers features 8 products, 3 of which are pre-mixed. Each product has been developed to tackle the most common problems that decorators face.

Our most popular product in the line is the Flex-E-Fill MX. A lightweight premium pre-mixed filler that repairs and smooths in just one coat! It can be used to repair any size hole, crack or dent and smooth surfaces prior to painting. It's very fast drying, making it the ideal filler for quick jobs.

It does not shrink and remains slightly flexible even when dry, preventing the reoccurrence of hairline cracks. It can also be worked between two filling knives to increase elasticity and ease of application.

Seven other products complete the range, which you can find at good decorating centres over the coming months. For information on your nearest stockist, call 020 8204 1422 or email [info@axisdecor.com](mailto:info@axisdecor.com)





# bromboroughpaints

Wallcovering & Paint Specialists. Est. 1948

## Now open in Stoke!

- All major brands available
- Colour mixing service
- Extensive selection of wallcoverings
- Wide range of decorating tools & materials
- Competitive prices
- Friendly, expert advice

**For more information call: 0151 334 1237**  
**or visit [www.bromboroughpaints.co.uk](http://www.bromboroughpaints.co.uk)**



Locations marked on the map: Carlisle, Kendal, Lancaster, Preston, Padiham, Trafford Park, Cheadle Hulme, Stoke, Shrewsbury, Northwich, Chester, Bromborough, Birkenhead, Wigan, Liverpool, Frodsham (retail only), Abergele.

## ...we've got the North West covered!

# Brewers *brief*

## Click and collect 15,000 wallpapers

If you're in the business of wallpapering, Brewers Decorator Centres offer you and your client flexibility and choice through a click and collect service from our sister company wallpaperdirect.com. The service enables the client to order the wallpaper of their choice which you, the decorator, can collect from any Brewers store at a time that suits you.

Wallpaperdirect offers the widest range of patterns and brands with around 15,000 wallcoverings to choose from covering all budgets and styles. Free samples are available to order and with

the opportunity to see the wallpapers in a variety of rooms online; your client will be able to make an informed decision.

It's quick and easy to use too! Once the client's order is ready to collect, we'll send them a text message and email to confirm it's ready. You'll then just need to pop into the selected branch and present the order number.

To find out more about our click and collect service, please visit wallpaperdirect.com or visit any one of our 177 stores. To find your nearest store visit [brewers.co.uk/stores](http://brewers.co.uk/stores)



### NEW PRODUCTS FOR THE PROFESSIONAL DECORATOR FROM PURDY

#### READY FOR ANY JOB



18" PAINT TRAY

#### FOR THE PERFECT FINISH



MOHAIR MINI ROLLER

#### FAST AND EASY CLEAN-UP



BUCKET LINERS

AVAILABLE AT PAINTING AND DECORATING STORES NOW  
FIND OUT MORE AT [PURDY.CO.UK](http://PURDY.CO.UK)

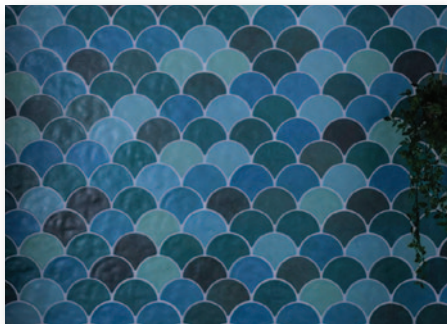




## Fishy tiles

Walls and Floors have just released their Achilles Fish Scale Tile collection. It's a range of decorative porcelain tiles with an eye-catching overlapping circular pattern, reminiscent of fish scales. They are perfect for transforming any wall or floor space throughout the home into a striking feature.

The collection consists of 4 designs covering both matt and gloss finishes - ranging from an aquatic mix of teal tones through to a luxurious marble effect design, alive with veining.



## Bent pole scraper



Purdy has launched a Bent Pole Scraper designed with a carefully angled blade that maximises efficiency for minimum effort and avoids the annoying scraped knuckles that using a straight scraper can cause. The new Purdy Bent Pole Scraper can be used by hand or, if necessary, is compatible with the Purdy Powerlock Extension Pole for hard-to-reach areas. A heavy-duty handles ensure no snapping and a rust-resistant three inch stainless steel blade will give years of active service on site on floors, walls or ceilings. Manufactured to trade grade standards with the same care that Purdy takes with its brushes, the Purdy Bent Pole Scraper is sure to become a fixture in the professional decorator's tool box.

## Mirka's new Mirlon

Mirka UK has introduced Mirlon Total, a flexible, three-dimensional fibre sanding material that they say lasts longer while providing an excellent key for between coats preparation.

The Mirlon Total pad is designed for use on profiled surfaces, such as skirting boards and panel doors, as the product moulds itself to the profile and creates a fine scratch pattern; the surface created is an effective base for the next coat.



## premill&finish

The perfect finish for any type of decoration

- Adheres to painted surfaces**
- Super fine for a smooth finish**
- Fast setting for early sanding**
- Formulated for plasterboard jointing, surface smoothing, repair and snagging work**

**Special prices now available, please contact Wondertex:**  
**01827 254402 | [wondertex.co.uk](http://wondertex.co.uk)**





# ***Red Devil***

## ***PREMIUM LIGHTWEIGHT FILLER***

- SPECIALLY FORMULATED PREMIUM LIGHTWEIGHT READY MIXED FILLER
- SPREADS EASILY • PAINTABLE IN MINUTES • WON'T SHRINK OR CRACK
- NO SANDING REQUIRED • INTERIOR AND EXTERIOR USE
- CLEANS EASILY WITH JUST WATER



250ml

500ml

1 Litre

4 Litre

TO FIND YOUR LOCAL STOCKIST PLEASE CONTACT [MARKETING@CIRET.CO.UK](mailto:MARKETING@CIRET.CO.UK)

[WWW.CIRET.CO.UK](http://WWW.CIRET.CO.UK) +44 (0) 2392 457450



## New Bosch direct driven random orbit sanders

Bosch has expanded its range with two new direct driven random orbit sanders the GET 55-125 Professional and GET 75-150 Professional.

Both tools are equipped with a powerful 550 or 750 watts motor meaning they can achieve a fast removal rate with a high surface quality. Not just that, but with just one click, tradespeople can change from fine sanding to coarse sanding or polishing with the direct driven function, achieving three times faster material removal.

Both have multi-hole pads and are compatible with all common abrasives. The direct driven random orbit sanders are also equipped with an anti-



static dust extractor, that makes it easier to guide a connected dust extractor, an auxiliary handle for the use on both sides

as well as a removable guard attachment for protecting the sanding pad and workpiece during work close to edges.



The premier trade and employers' association for the painting & decorating industry in the UK

### Look at these great member benefits...



#### Support & Growth

- Legal Support
- Mediation & Arbitration
- Employment
- Tax Support
- Product Information
- Training
- Technical Advice



#### Market Profile

- Free Profile on Website
- Certification of Quality
- Competitions
- Representation
- A Voice for the Industry



#### Knowledge & Skills

- Legal Assistance
- Industry Standard Templates
- Insurance
- Tax Advice
- Health & Safety and Risk Assessments
- Employment Support
- Helplines
- Apprentices and Training
- Mediation and Arbitration
- Free Member Magazine



To join The Painting & Decorating Association or for more information please contact us:

W: [paintingdecoratingassociation.co.uk](http://paintingdecoratingassociation.co.uk) E: [info@paintingdecoratingassociation.co.uk](mailto:info@paintingdecoratingassociation.co.uk) T: 024 7635 3776

[www.paintingdecoratingassociation.co.uk](http://www.paintingdecoratingassociation.co.uk)



# Macpherson

**TRADE PAINTS**

PROUD TO HAVE OFFERED  
ESSENTIALLY GREAT VALUE  
**SINCE 1884**



For more information or to find your nearest Macpherson stockist,  
please call the Customer Relations Team on 0330 024 0313

[www.macphersontrade.co.uk](http://www.macphersontrade.co.uk)



## Snickers Loose-fit Stretch Trousers

These new stretchy work trousers for men have a loose fit for a classic Snickers Workwear look and feel, with stretch Cordura for increased durability as well as improved ventilation and close quarter mobility.

What's more, the new slim-fit work trousers for women are shaped to fit the female anatomy. The ergonomic 'women's fit' includes wider hips and a narrower waist for a street-wise, fashionable look with optimal comfort and freedom of movement built-in.



## Hultafors Range of 'Snap-Off' Knives

Hultafors Tools has launched a new range of 'Snap-Off' Knives for the trade. With 13 different knives and 4 long-lasting precision blades, these all-round, ergonomic knives are designed and built to suit a wide range of jobs on site.

Symmetrically designed so that the blades can be turned over, they're adaptable for both left and right hand use. The blades are available in three widths of 9, 18, and 25mm, with different blends of sharpness and long life built in to suit regular hard work on site.



## Site containment

Trimaco's new E-Z Up Poles are designed to keep debris and dust contained to the work area. The Heavy Duty E-Z Up Dust Containment Pole works with plastic sheeting to create a dust barrier on site.

The design means that there are no loose parts that break or go missing. Highly durable and easy set up, the kit features heavy-duty aluminium construction and is available in three maximum heights – 12ft (3.66m), 16ft (4.88m) and 20ft (6.10m).

Plastic sheeting is simply clipped onto the quick clip and the pole adjusted to the ceiling height. A foot pedal ensures a snug fit.

The E-Z Up Peel + Stick Zipper can be used to create an instant doorway in and out of the work space.

## Crown Decorating Centres new brush

The new Ultimate Advanced Synthetic brush from CDC has been developed to combine maximum paint absorption with precision to give a smooth, high opacity finish. Featuring a micro-construction filament design for good paint pick up and release, Crown's new brush is designed to enable greater surface areas to be covered in less time, whilst the feathered filament tip ensures control when cutting in.

The new brush features a lightweight aluminium frame, which maintains good support through the middle of the brush head. It is suitable for water-based paints and has a beech beavertail handle.



## tesa launch new spray-paint protection



tesa Easy Cover® Precision is a 2-in-1 masking tape and protection film for large areas, designed specifically to protect any furnishings against paint splashes and spraying, whilst enabling sharp paint edges. The latest member of the Easy Cover® range is now available in new sizes of 2.1m and 2.6m drop.

A key feature of Easy Cover® Precision is a statically charged film that combines plastic foil with the latest in film technology, enabling the slowing down of paint drops. Designed for smooth and slightly textured surfaces, this product features 6-month residue free removal capabilities. The full Easy Cover® range now includes, tesa Easy Cover® Precision, tesa Easy Cover® Universal and tesa Easy Cover® Paper.

## BIO FLEX™ ALLROUND

The first bio-based epoxy repair resin for all types of repair throughout the year

- For the permanent repair of wood decay and wood damage.
- Suitable for repairing during all seasons.
- Suitable for renovating, restoring and maintaining wooden components.
- For use indoors and outdoors.
- Excellent adhesion on many types of wood.
- Permanently elastic.
- To be used in combination with DRY FIX® UNI.



### BIO FLEX™ ALLROUND

#### Characteristics:

- Contains 40% bio-based raw materials
- Certified 'OK biobased' - 1 star
- Ready for sanding and painting after 12 hours (at 20°C)
- For repairs with a layer thickness of 5 - 50 mm
- Application temperature: 0 - 35°C
- Application period: 15 - 20 minutes at 20°C
- Non-sagging and does not shrink
- Easy to apply and very easy to mold tight
- Built-in mixing control system
- Guaranteed adhesion of paint



## Dexter's whites

Dexter's Workwear is expanding its decorator range by launching an all-white version of its existing trouser and shorts. The durable workwear range features an interchangeable pocket system, billed as "an integral part of the professional users toolkit".

Pocket choices available include papering, prepping and pouch pockets. These allow the tools required for individual jobs to be attached in a choice of positions depending upon the job at hand.



## Semi-gloss SCUFF-X

Benjamin Moore's Ultra Spec® SCUFF-X® is now available in Semi-Gloss. It offers durability and scuff-resistant properties without the strong odour, pre-mixing, short pot-life and application difficulties. This paint will retain its high-quality appearance with minimal maintenance, requiring just soap and water clean up.

Offered in four finishes, Eggshell, Satin, Matte and now Semi-Gloss. All finishes are available in over 3,500 colours, making it suitable for schools hallways, hospital waiting areas, retail fitting rooms, hotels lobbies, leisure facilities and corporate spaces.

## Q1's range grows

Q1 has extended its range of painting and decorating specific masking solutions with four new products.

The new Cover All dust sheet features a patented folding system designed to make it quick and easy to open meaning rapid coverage of carpets or furniture.

Two new pre-taped products include an electrostatically charged, Pre-taped Washi Film in a variety of sizes and a Pre-taped Masking Paper for the accurate and fast coverage of skirting boards, architraves, windows and light switches.

There is also an easy to use dispenser for the pre-taped film and paper which, say Q1, quickly and accurately cuts both the tape and the film or paper for even quicker application.



## F&B and the Natural History Museum collaboration

For the first time, Farrow & Ball has created a brand new palette of 16 colours in collaboration with the Natural History Museum, inspired by the true colours of nature. The new Colour by Nature palette of 16 hues includes vibrant and jewel like oranges and reds, natural and opulent greens and blues and a range of soft neutrals. The collection launches on 19th September as an extension to the 132 colours on Farrow & Ball's colour card.



The collaboration draws on the Museum's world leading collection including its rare book library, which holds Werner's Nomenclature of Colours, a colour guide used by Charles Darwin to bring the true colours of nature into the home. Every colour described in Werner's book evokes a vision inspired by the natural world. Colour by Nature is a celebration not only of colour, but also of the shared respect and curiosity for the natural world.



# FESTOOL

## Perfect surfaces.

Comfortably done.

**The ETS EC 150 eccentric sander provides comfort without compromising on power.**

This sander has been specifically designed to reduce fatigue whether sanding overhead or on a flat or curved surface. Ideal for professional preparation of walls, ceilings, doors and stairs.

Discover more at [www.festool.co.uk](http://www.festool.co.uk)



Tools for the toughest demands



**ProDec**  
**ADVANCE**

*“Without any shadow of a doubt the  
best brush I have used to date.”*

Decorators Forum testing panel member

Ice  
Fusion

The only brush  
officially endorsed by

