

The Professional Painter & Decorator



Tank

*the ultimate brush
for woodcare*

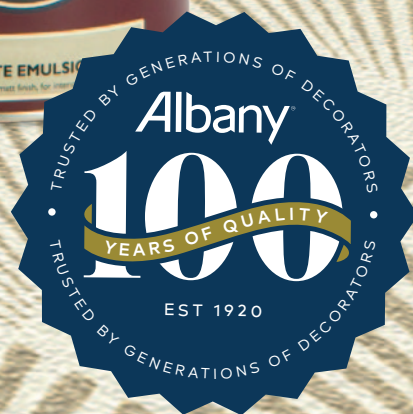
**Covers up to
30% more
surface area**

- Innovative 2 in 1 combination of natural bristle tank with synthetic bristle coat
- Fine surface finish with finely tipped bristles

kana

by **Ciret Ltd.**

Your choice for paint and wallpaper



20%
OFF



YOUR FIRST PURCHASE
WITH A BREWERS ACCOUNT*

Ask in-store or visit brewers.co.uk

*New cash or credit account holders only

Over 170 stores nationwide

The Professional Painter & Decorator

INCORPORATING THE PAINTING & DECORATING JOURNAL

News 2

Purdy's new stub brush 8

With an ever-increasing demand for 'stubby' paint brushes across the trade, Purdy, has developed the Cub brush. Here, Kristie Blackford-Mill from Purdy talks through the benefits of its latest addition and the trade's reaction so far.

Have confidence with colour 12

Colour is central to any decorating project - whether it's a domestic or commercial job. Dulux Trade know getting the colour right is vital to keep clients happy. Decorators need to have confidence that the products they use will deliver for them on every job.

Zinsser Launches New Scrubbable Ultra-durable Decorative Wall Paint 16

Zinsser's range of products include coatings for interior and exterior use and each of Zinsser's paints, primers and removal solutions can be depended upon to do the job right. Now there's a new one AllClean.

Bradite's One Can: as an outsider 20

Bradite's One Can launched in 2018 and is now establishing itself a product that will adhere to virtually any interior or exterior substrate.

Variegated leaf 24

Many decorators will have done gilding with metal leaf or gold at some point in their career, but there are many gilding products that aren't really known about, such as variegated leaf.

Prime examples 26

From improving adhesion and covering stains to helping paint finishes last longer, primers can help transform even the most difficult of substrates. Kevin O'Donnell from Crown Trade's technical department looks at some of the most common painting problems and how primers can provide the perfect solution.

A V33 paint that helps decorators optimise profits? 32

V33's Marketing Manager, Richard Bradley, here talks about a new innovation in white paint that is set to transform the way painters and decorators approach certain internal projects.

Training with Mirka 36

The Mirka Training Centre in Milton Keynes offers a variety of courses on how to get the best out of their equipment - is this something you should consider for the development of your business? We put a few straightforward questions to Mirka.

Gatis Celmins: Apprentice Decorator of the Year 2019 38

On test: toolboxes 40

Marketplace 44



The National Painting & Decorating Show
Nov 24th - Nov 25th 2020

Editorial David Pescod
Advertising Richard Daynes

Published by
DPA Publishing Ltd
Stoney Lane Barn
Stoney Lane
Bovingdon
Herts HP3 0LY

Editorial: 01303 238002
Email: ppd.editorial@gmail.com

Advertising & Subscriptions: 01442 832715

Production The Orange Design Group

Printed by Wyndeham, Roche
Subscription £18.00 p.a. (in the UK)

Subscribe to the

The Professional Painter & Decorator

only £18 per year
(including postage)



It's the only way of ensuring you receive your copy

Published 4 times per year - February, May, August & November

Make cheques payable to
DPA Publishing Ltd
Orders can only be accepted with payment

Send to:
DPA Publishing Ltd
Stoney Lane Barn, Stoney Lane,
Bovingdon, Hertfordshire HP3 0LY

SUBSCRIPTION

Name: _____

Company: _____

Address: _____

Postcode: _____

Email: _____

Bradite delivers colour-co-ordinated car park

A Norwich underground car park has been given a bright and colourful, hard-wearing character using Bradite's high performance CF22 Floor Finish.

Locally based Cladspray Solutions tackled the job at Trinity Street where a basement car park beneath a new build apartment block needed marking out.

The client required 13 individual spaces plus two specifically marked for electric charging points. But the first task was to prepare the rough concrete floor surface which had been used as a storage area for plant and materials during the construction of the block above.

"First we diamond grinded the floor to create an even, clean surface," says Cladspray Solutions Business Development Manager Dan Ruegg.

There was no hesitation in using the CF22 for the new covering. "This will be the second time we've used the product and we knew it would be durable enough for the job even though it's a single pack product," he said.

First, the main floor was painted grey with one coat of the chlorinated rubber floor paint



thinned to 20 percent. This was followed by two full coats.

The individual bays were to be delineated in a contrasting colour rather than the more traditional broken white lines. Bays 1 to 13 were to be painted blue and the two electric

charging bays bright green. To achieve this the individual bays were masked with timber while the rest of the floor was painted and then treated in the appropriate colours with CF22, again thinned to 20 percent, followed by two full coats.

Sandtex transforms apartments

A residential block on Glasgow Green has been transformed as part of the city's Homes for the Future project, using Sandtex Trade Fine Textured Masonry paint.

Glasgow's Homes for the Future initiative began in 1999 and aims to enhance the area around Glasgow Green, which is used as a public route to and from the city centre. It has involved collaboration between a number of parties, including architects, Scottish Homes and property developers.

The most recent project involved painting the site's flagship apartment building which was designed by Ushida Findlay and is managed by Speirs Gumley. The work was carried out by painting and decorating contractor Bell Group over a period of 10 weeks.

To transform the building, Bell Group's

painters used approximately 2,500 litres of Sandtex Trade Fine Textured Masonry paint in Pure Brilliant White, supplied by The Decorator Centre in Airdrie. The product's flexible coating won't peel, crack or flake, and is resistant to dirt and mould – meaning it will maintain its aesthetic appeal for longer.

Sandtex Trade Fine Textured Masonry paint also benefits from a drying time of three to four hours and is suitable for use on most sound and dry exterior masonry surfaces. It's ideal for use even when the weather is unpredictable, being rainproof in just one hour.

Bell Group were responsible for the building's render repairs prior to the repainting, and also used Sadolin Superdec Satin Opaque Wood Protection to repaint the



timber-framed windows in colour RAL 7042. The product provides a highly durable finish – lasting up to 10 years – and is ideal for use where a change of colour is required, or where weathering has caused an uneven appearance.

Now available in
COLOUR

AkzoNobel

The art of a perfect finish.

Introducing a durable water-based
trim paint that lasts.

Stuart Aldous (b. 1973)
Dulux Select Decorator
Door Frame
Water-based on wood



**Dulux Trade
Diamond Satinwood**

We promise our paint will give you the perfect colour
with a uniform finish and the coverage stated, or we'll
replace it. Visit dulux.co.uk/promise*

*Terms and conditions apply. Claims must be made within 6 months of purchase.
Proof of purchase required. Colour claims limited to 10L per-customer. Manufacturer's
tips and instructions must have been followed. UK purchases only.

AkzoNobel, the AkzoNobel logo, the flourish logo, Dulux, Dulux Trade and
Dulux Select Decorators are all trademarks of the AkzoNobel group ©AkzoNobel 2020.



Dulux Academy scoops training excellence award

Dulux Academy has been announced as the winner of the On The Tools Training Excellence Award for the second year running.

A panel of judges, all experts in the construction industry, selected Dulux Academy as a worthy winner after impressing with its ongoing commitment to furthering the skills and championing professional decorators around the UK.

Vickie Mather, Dulux Academy Lead, said: "Winning this award means so much to the team at the Academy. We love what we do and every day we have the opportunity to help new and experienced decorators to grow their business by learning new application techniques and wider business skills at our purpose built Slough training centre and at partner colleges up and down the country.

"There is a shortage of painters and decorators in the UK and the Dulux Academy works to encourage people into the trade and develop the skills and techniques of those more established to keep up to date with industry developments.

Crown Trade adds finishing touch to new Poole housing development

Using a combination of products from Crown Trade's popular high-performance Clean Extreme and Fastflow ranges, Poole Housing Partnership's new supported living accommodation provides a welcoming space where residents can feel at home.

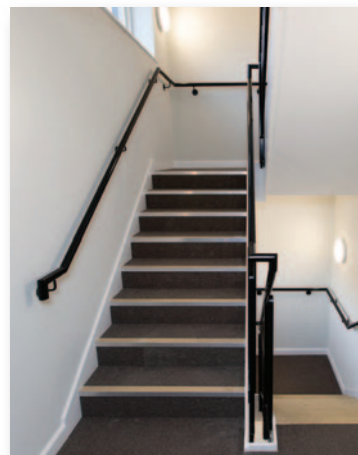
The Canford Heath Road Development is a new affordable housing scheme designed to provide 100 per cent affordable housing and will consist of three blocks with 56 general needs flats in Blocks A and B in addition to Block C which will house six supported living flats for young people with complex needs.

Having specified Crown Trade for use throughout the development, Poole Housing Partnership (PHP) worked closely with Crown's technical team to finalise the product specification and create a tailored colour scheme to suit different areas of the development.

Suited to high-traffic areas, Crown Trade's Clean Extreme Stain Resistant Scrubbable Matt was used on the walls in the hallways, lift lobbies and other common areas within Block C, as well as private spaces including bedrooms, living rooms, kitchens and bathrooms in the supported living flats. The interior woodwork was decorated using Crown Trade's Fastflow Quick Drying Undercoat and Satin, while Crown Trade's Covermatt emulsion was also applied to all the ceiling areas as part of the new development.

The use of Crown Trade's Fastflow Quick Drying Undercoat and Satin on all interior woodwork in Block C brought other benefits to the scheme. Being water-based, it's virtually solvent-free, helping to eliminate any strong odours throughout the decoration process. With excellent flow and a high-quality, high-sheen finish, Fastflow is both durable and resistant to yellowing – ensuring the paintwork at Canford Heath Road will look as good as new for years to come.

The colour scheme for the supporting living accommodation at Canford Heath Road was specified with assistance from Crown's in-house colour specification team who suggested several different options that would meet required regulations while also creating the homely finish PHP was looking for. All the paint used for the project was tinted to the specified shades by the Crown Decorating Centre in Poole.



Vauxhall's contract hire deals

Vauxhall's new Ready4Business rental programme offers small businesses affordable contract hire options on its vans, including Combo Cargo and the all-new British-built Vivaro. With immediate delivery and short rental periods from just two years up to five years, Ready4Business gives SME customers flexibility in the current uncertain business climate.

The Vivaro is available in two variants, starting from £229 per month with a matching initial rental of £229 (excluding VAT). Similarly, the Combo Cargo is available in two versions, starting from £199 per month with a £199 initial rental (excluding VAT). The Combo Cargo Sportive model comes with metallic paint at no extra cost. Contract hire for the Ready4Business scheme

is provided through Free2Move Lease, led by Vauxhall's parent company, Groupe PSA. Agreements are tailored to suit the needs of the customer and, with only one-month advance payments available, the scheme provides excellent financial flexibility to the customer and their business.

PREMIER



For interior &
exterior use

UV
RESISTANT
120 DAYS

Ultimate Painters Tape

High tack for irregular surfaces

CONTRACTOR



For interior &
exterior use

UV
RESISTANT
14 DAYS

14 Day Masking Tape

For crisp sharp edges

PROFESSIONAL



For interior &
exterior use

UV
RESISTANT
60 DAYS

Superior Painters Tape

For clean & crisp flat edges

SPECIALIST



For interior &
exterior use

UV
RESISTANT
90 DAYS

Low Tack Painters Tape

For delicate surfaces

SPECIALIST



For interior use

UV
RESISTANT
60 DAYS

Sensitive Painters Tape

For sensitive surfaces

PREMIER



For interior use

UV
RESISTANT
N/A

7 Day Masking Tape

Smooth tape for flat edges

+44 (0)2392 457450

sales@ciret.co.uk

masq
by Ciret Ltd.

ROTA!

kana

masq

prep

www.ciret.co.uk

British decorators reveal the important things to get the job done

Dulux Decorator Centre's research, carried out to support the decorating merchant's Centred On You campaign, polled 1,000 decorators across the UK to find out what factors would make their ideal working day.

It showed almost a quarter (23 per cent) said getting everything they need in one place is the priority to get the job done, while one in four said they found a large range of stock crucial.

Nearly half (46 per cent) singled out the importance of good quality paints, prioritising this over the price of the products (36 per cent). When it comes to improving their day-to-day life, decorators value life's little luxuries, with almost half (46 per cent) struggling to fit in a break in their busy days and claiming finding the time for a simple cup of tea would make their work day better.

One in five said they are most likely to relax having dinner in front of the TV and 12 per cent enjoy having a long bath after a hard day's work.

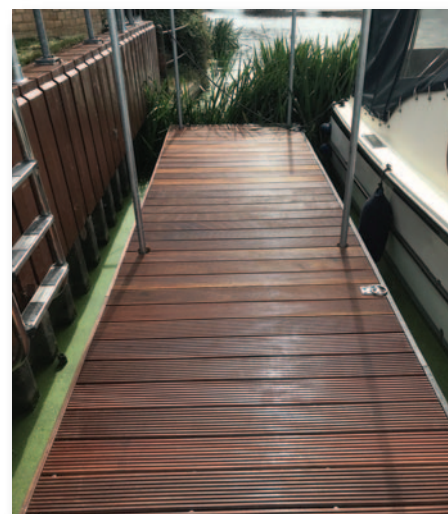
Johnstone's Trade takes home industry award

Johnstone's Trade has won the award for Best Materials Innovation at the 2019 Building Innovation Awards for Air Pure, a bio-based wall and ceiling paint that improves indoor air quality.

Developed with Air Purifying technology, Johnstone's Trade Air Pure neutralises up to 70 per cent of formaldehyde from the air as soon as it is applied. Formaldehyde is one of the most harmful volatile organic compounds (VOCs) present in houses and public spaces, with molecules being emitted from a range of common indoor materials, such as chipboards, carpet, glue and interior fabrics.

Thanks to the use of renewable raw materials, Johnstone's Trade Air Pure is also 45 per cent bio-based and the packaging is made from 100 per cent recycled materials, contributing to a more sustainable world – one of the key factors that impressed the judges at the awards.

Jetty finished with Osmo UK



After installing a jetty to provide safe access to his boat, a marine enthusiast was looking for a product that would protect the wooden decking from the elements whilst also enhancing its natural grain. Painter and decorator, Robert Moore of R.F.M Painting & Decorating Services was contracted for the project and Osmo UK Decking-Oil was chosen to provide a high-quality and professional finish.

The boat is moored at the exterior of a suburban home and can be easily reached via the wooden jetty. As it is constantly exposed to the elements, the finish needed to be able to protect the wooden surface from water damage and cosmetic wear and tear. Impressed by the ease of use of Osmo UK finishes, Rob recommended Decking-Oil for this project: "I've used Osmo in many of my previous projects and it doesn't disappoint. Decking-Oil is extremely durable, and my clients regularly comment on the high-quality of the product."

As the decking was brand new, it did not need a lot of preparation. The wooden decking was wiped down to remove any excess debris or dust, which ensures even coverage and distribution. Decking-Oil was then applied by a soft brush, with 24 hours between each coat to allow for adequate drying time. The finish has enhanced the wood's natural characteristics and provided protection for many years to come.

Ladder Association highlights recent HSE prosecution

A recent prosecution at Wellingborough Magistrates' Court has again highlighted the importance of ensuring work at height is properly planned, supervised and carried out by a competent person.

The court heard that a painter and decorator sustained serious, life-changing injuries after falling from height while setting up ladders to paint the exterior windows and soffit boards of a private property. The fall resulted in the employee being permanently paralysed from the chest down.

An investigation by the Health and Safety Executive (HSE) found that the incident could have been prevented if the work at height

hierarchy had been followed in the planning process and if appropriate equipment had been provided to the employee. In this specific case, the risk assessment should have identified that the work was not short duration and as a result, ladders were not the most appropriate equipment to use.

The painting contractor pleaded guilty to breaching Section 2(1) of the Health and Safety at Work etc. Act 1974. He was sentenced to a 12-month community order, 160 hours of unpaid work and ordered to pay costs of £2,124.28 with a surcharge of £85.

In response to this prosecution, the Ladder Association is urging all ladder users, and those responsible for managing the safe use of ladders, to put ladder training at the top of their height safety agenda.

Your choice for outdoor jobs



20%
OFF



YOUR FIRST PURCHASE
WITH A BREWERS ACCOUNT*

Ask in-store or visit brewers.co.uk

*New cash or credit account holders only

Over 170 stores nationwide

Purdy's new stub brush

With an ever-increasing demand for 'stubby' paint brushes across the trade, Purdy, has developed the Cub brush. Here, Kristie Blackford-Mill, Senior Product Manager at Purdy talks through the benefits of its latest addition and the trade's reaction so far.

Having worked closely with painters and decorators for the last 95 years, Purdy is aware of changing trends, techniques and requirements. After speaking to the trade it was clear that there was a demand for 'stubby', shorter handle brushes that could be easily used to paint difficult and confined spaces. Up until now, many decorators were cutting the ends off their favourite brand of brush and re-sizing them themselves, which can lead to the brush being unbalanced.

In response, Purdy has developed the Cub brush. Designed as a lightweight brush with a short, alder wood handle, the new addition is half the weight of the two-inch Monarch Elite which is the usual brush of preference for painters looking to cut a fine edge.

Featuring an angular trim head, the brush is ideal for cutting in and tight corners. The blend of Dupont® solid, round and tapered Tynex® and Orel® filaments give the brush a unique finish. Orel® adds stiffness and control, while Tynex® gives greater wear resistance and creates a high quality, long lasting product.

Additionally, each filament in the brush is individually flagged which means they split at the ends. This can help create a larger surface area to capture more paint pick-up and a smaller diameter for each split filament help leave fewer brush marks. Over the course of the brush's lifetime it will continue to self-flag which will allow the painting tip to remain of a consistently high quality throughout its use. Crucially, the brush is multipurpose and is fully compatible with all types of paints and stains.

As with all Purdy brushes, the Cub has been manufactured by hand by an experienced brush maker and every brush purchased will have the





PREMIUM PAINTS



The Crown Trade range of premium quality problem solving products have been developed for every decorating situation. With proven product benefits ranging from blocking stains and defending against bacteria, to fighting mould and quick drying solutions, your job is in excellent hands with Crown Trade.

For more information on the Crown Trade range visit:

www.crowntrade.co.uk



It's not just paint.
It's personal.®

Purdy's new stub brush

recognisable sticker with the signature of the person who made it. This way the company can guarantee a high quality and durable finish with no filament loss for every brush made.

Keen to obtain feedback on the new design, the Cub was trialled by a number of decorators in the UK – and so far, the feedback is extremely positive.

Mike Cupit, Owner and Director of The Decorators Forum, commented: "I have tried the Purdy Cub Brush with several different paints over the past few weeks and I've got to say, I think it's going to make a great addition to the Purdy range. The bristles are very soft and probably best suited for applying water-based trim products, and you can square up quickly and easily.

"You can hold the brush comfortably and your hand is positioned closer to the substrate you're painting, meaning you have more control over the product."

The Cub meets all the needs of a painter and decorator with its ease of handling, angular trim and blend of filaments, guaranteeing a perfect finish from the very first try.

For more information on the new Purdy Cub brush, please visit: www.purdy.co.uk



Don't *just* decorate... **BEDEC-ORATE!**

Innovators in Water-based Technology

Bedec Products Ltd., Units 1 & 2 Poplars Farm, Aythorpe Roding, Dunmow, Essex. CM6 1RY

Tel: +44 (0) 1279 876 657

Email: info@bedec.co.uk

www: www.bedec.co.uk

THERE'S NO DIRT ON US

In our line of work, a spotless reputation is a must. No problem – our new AllClean paint will keep your customers' colour schemes looking sharp whatever life throws at them. It's scrubbable, it's durable, and it's tintable to any colour.

It's a matt paint you can't mess with. **Talk to your paint dealer today.**



zinsseruk.com

#whatsyourproblem

Have confidence *with colour*



Colour is central to any decorating project - whether it's a domestic or commercial job. Dulux Trade know getting the colour right is vital to keep clients happy. Decorators need to have confidence that the products they use will deliver for them on every job.

Dulux Trade has introduced a new streamlined Dulux Trade colour wall, with 384 complementary colours selected by their colour experts, so that it is easier for decorators to help their clients choose a scheme using the colours in store. It is ideal for those that don't have a colour in mind and is supported with new colour scheming guides available next to the colour walls to help decorators select colour combinations for clients.

Dulux Trade also continually analyses colour trends. In September, they revealed the Colour of the Year for 2020 as Tranquil Dawn™, a natural soft green, along with four supporting palettes: Meaning, Care, Play and Creativity.

All the palettes have been designed to make

use of Colour of the Year simple and help decorators confidently select or recommend the best colour schemes for their clients' needs. This year, the launch is supported with a useful guide to support decorators to talk about the trends and accompanying colours with ease.

In addition to ongoing trend analysis and colour scheming support for customers, Dulux Trade has invested more than £6 million in colour accuracy and consistency to get the colour right in every can. The brand's research and development experts have created a cutting-edge technology to provide more accurate colour matching so that once a client has selected a colour, it can be mixed perfectly across product ranges.

Dulux Trade has developed new tinting



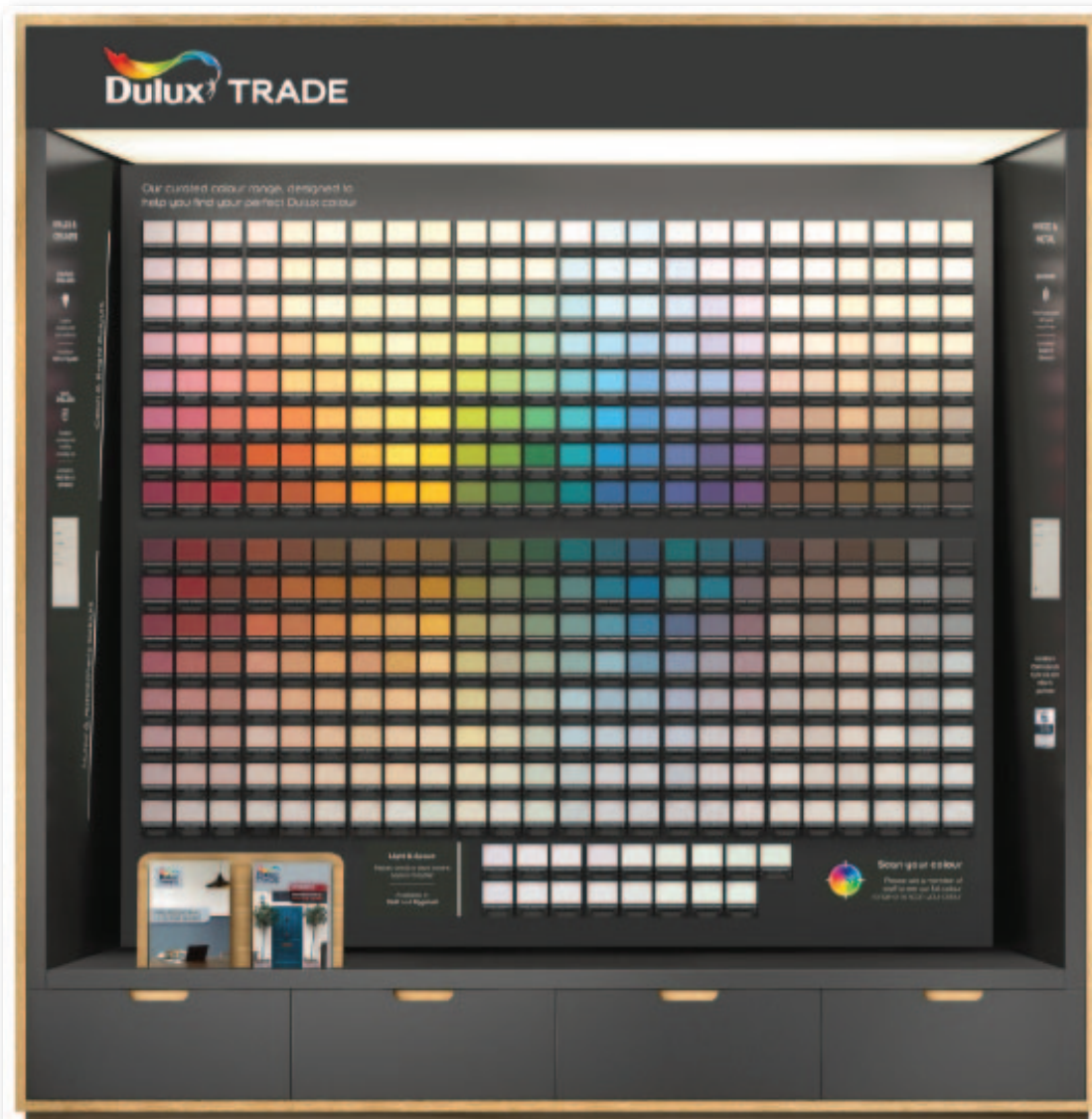
An exceptional finish starts with perfect masking.

Q1® Premium Masking Solutions
for professional painters.

machine software that allows them to scan and create a colour. This industry first means that decorators can confidently offer clients a unique experience so they can create and name their own individual colour. Decorators can then return to store with a unique code and re-tint the exact colour in any product for years to come from the one single scan of any item from a cushion to a curtain.

This new colour matching process, which develops a perfect match, rather than the closest possible match is now possible due to investment in new scanners, recipe upgrades and updated paint matching software used in stores. The result is that every colour created is exactly what the client requires, meaning decorators can be confident they'll deliver customer satisfaction on every job.

As well as in store innovation, the brand remains focused on arming decorators with the tools they need to make their job easier.



The Dulux Trade Colour Sensor was launched in July and has been specifically adapted for use with Dulux Trade paints to allow decorators to scan any surface and give clients a match on the spot on those occasions when the item to match cannot be brought to store.

The pocket-sized device works by scanning for the desired colour from whatever surface it is on - whether it be a favourite item of clothing, a cushion, or a picture from a magazine - then displaying the closest Dulux Trade paint match on the Dulux Trade Colour Sensor app.

The app is also able to provide a selection of rooms painted in the colour selected so that decorators can help clients to fully visualise the end result.

Giving decorators great colour expertise

Dulux Trade also continues to be focused on providing decorators with the knowledge

and insight to confidently use the tools they've developed to discuss colour with clients.

The Dulux Academy has enhanced its colour courses, with nine courses available, led by a new Skills Development Consultant, Nicola Holmes, to give professionals the skills required to keep themselves at the very top of their game.

Courses include Designing Beautiful Living Spaces, Presenting Colour to Customers, as well as a course designed to give professional decorators the best instruction and advice on the tools offered - Colour Tools.

Dulux Promise

This continual advancement in colour - combined with enhancements in finish and consistency - underpins the recently launched Dulux Promise, a firm commitment from Dulux to deliver on the high expectations of professional decorators today

and in the future.

It's this that sets Dulux Trade apart from competitors, so that decorators can be confident that their product quality, and supporting tools, will help them to get the job right for their clients, so they don't need to return to the same job twice.

For more information, visit:
<https://www.duluxtradepaintexpert.co.uk/en/colours/collections/explore-dulux-colour-year-2020-tranquil-dawn> or
www.duluxtradepaintexpert.co.uk/content/dulux-colour-excellence.





Seamless



Beamless



Flawless

"In my honest opinion it's a market leader. I've trialled many brushes and I have to say this trumps them all."

Decorators Forum testing panel member

Zinsser launches New Scrubbable Ultra-durable Decorative Wall Paint



Zinsser's range of products include professional coatings for interior and exterior use and each of Zinsser's paints, primers and removal solutions can be depended upon to do the job right, making Zinsser products a safe bet for decorators. Now there's a new one, AllClean.

This year the Zinsser brand celebrated over 170 years of producing industry products. And the brand continues to expand its range, producing professional quality and fast-drying formulas that solve problems

The latest product to launch is Zinsser AllClean, a scrubbable, stain-resistant wall paint that offers exceptional performance in high-traffic environments.

AllClean® is ISO 11998 Class 1 scrub rated, which means it has the highest abrasion resistance and cleanability. This outstanding scrub rating enables repetitive cleaning without affecting the painted finish for up to 10,000 scrubs.

Even the toughest stains such as ketchup,

mustard, tea and coffee are no match for AllClean. This durable coating ensures the painted finish looks fresher for longer, making it a good choice for use on walls and ceilings in environments that require frequent cleaning, such as homes, schools and commercial buildings.

AllClean® can be tinted to any BS4800, RAL and NCS colour through the appropriate tint base and is also Class 0 Fire rated, which means the paint inhibits and slows the surface spread of flames, helping to minimise the risk of fire within premises. Available in 5L and 2.5L sizes.

Another customer favourite for decorating exterior surfaces is Zinsser AllCoat Exterior,

SELECT YOUR WEAPON



onyx[™]
series



Unique Tricho[™]
filament
delivers
maximum
spreading rate

mink[™]
series



Ultra-soft
filament tips
eliminate
brush marks



Ergonomic,
FSC[®] certified
beechwood
handles



Stainless steel
ferrules



#designedbydecorators

For more info, find us online:
www.axisdecor.com

available in Matt, Satin and Gloss finishes. This paint offers resistance to mould, cracking, blistering and flaking as well as rain and severe weather. Suitable for use with all exterior surfaces, such as wood, metal, masonry, plastic, concrete and cladding, it forms a low-maintenance water-shedding coating in one hour and can be painted with a second coat after one hour. This self-priming paint is another product that enables jobs to be completed quickly, efficiently and brilliantly.

Zinsser AllCoat Exterior paint can be matched to any RAL / BS or NCS colour reference, including designer colours.

Finally, Zinsser's most popular product is B-I-N®, the original shellac-base primer-sealer. This "silver bullet" primer, sealer and stain killer offers adhesion to glossy surfaces, dries in just 15 minutes and is recoatable in 45 minutes, saving both time and money.

B-I-N's formula gives it stain-killing power and covers everything unwanted, from water damage, to fire damage and more. It's the best primer for sealing interior wood and is the "go to" for spot priming knots or sap streaks inside and out, making it a key staple in any decorators van.

Alongside an outstanding problem-solving product range, Zinsser also ensures decorators and DIYers are armed with the correct knowledge to use products efficiently, ensuring each job is completed correctly.

The Zinsser Pocket Guide, which is available as an app and printed book, is packed with expert advice on priming and finishing substrates, with detailed guidance and specialist product recommendations.

Zinsser's UK-based Technical Support team are on hand to answer any questions and offer expert advice. They can quickly tell you which product is best suited to a job,

give advice on the best method of application and help establish how much paint is needed.

Zinsser's UK based specification service is also available free of charge, often working with professional specifiers, architects, maintenance managers, FM companies, property owners and professional on-site spray contractors to solve a wide variety of painting problems. The experienced team helps at every stage of a project, from initial survey through to specification and application of coatings, providing on-site advice, training and technical assistance.

For further information on the Zinsser's range and services, please visit www.zinsseruk.com

For more information on Zinsser and its range of specialist paints and primers visit www.zinsseruk.com, or alternatively for product advice contact Zinsser's Technical Support Team on 0191 411 3166.



bromboroughpaints
Wallcovering & Paint Specialists. Est. 1948

We've got the North West covered!

- All major brands available
- Colour mixing service
- Extensive selection of wallcoverings
- Wide range of decorating tools & materials
- Competitive prices
- Friendly, expert advice








For more information call: 0151 334 1237
or visit www.bromboroughpaints.co.uk

Visit our online store Trade1st.co.uk
1st FOR DECORATING SUPPLIES



Red Devil

PREMIUM LIGHTWEIGHT FILLER

-  Specially formulated premium lightweight ready mixed filler
-  Spreads easily
-  Paintable in minutes
-  Won't shrink or crack
-  No sanding required
-  Interior and exterior use
-  Cleans easily with just water



250ml

500ml

1 Litre


4 Litre



To find your local stockist please contact marketing@ciret.co.uk
www.ciret.co.uk +44 (0) 2392 457450

by **Ciret Ltd.**

Bradite's One Can: as an outsider



Bradite's One Can was launched in 2018 and is now establishing itself a product that will adhere to virtually any interior or exterior substrate.



One Can is a water-based, stain blocking, anti-corrosive coating that is touch dry in 30 minutes and recoatable in one hour. Regardless of your project size, once you've finished putting on the first coat, you can start straight away with the second.

Here we have a couple of exterior projects which illustrate One Can's versatility.

On cladding...

'Forum', which specialises in producing eye-catching retail displays, occupies sites on a Thetford industrial estate. Due to the wear and tear of their existing cladding, they called in 'Transformations Painting and Decorating UK' to give the premises a make-over.

"The existing cladding was peeling badly so

we pressure-washed it before sanding it all down," says Transformations owner Derek Keane.

Three coats of One Can, a quick drying all-in-one primer/finish coating were applied by spray in a shade of vibrant blue.

This was Derek's first time using One Can which was recommended to him by the Thetford branch of decorator's merchants, Brewers. He was impressed by its performance including its excellent adhesion, stain blocking and anti-corrosion properties.

"It's a great product," he commented, "and I shall certainly be using it again."

One Can can be used for painting over most properly cleaned and prepared commercial wood, uPVC, glass, plastic, tiles and metals.



“Another perfect finish!”

HAMILTON®

— We're at home in your toolbox —



hamiltondecoratingtools.co.uk

For more information and to browse Bradite's product range, visit www.bradite.com.

On windows

A simple and effective way of updating the exterior of a house is to introduce new colours for windows and patio doors.

With excellent adhesion properties and no need for additional primer, One Can was the ideal choice for Chris Smith, the contractor asked to transform white windows to on-trend colour, anthracite grey.

After degreasing and lightly abrading the substrate, the first primer coat of One Can was applied followed by two further coats to achieve an eggshell finish. One Can's quick-drying properties were also an excellent feature. With one hour drying time between coats, Chris was able to maximise daylight hours and get the job done in one visit. This, in combination with low-odour, meant the job didn't disrupt the customer for more than one day.

One Can is tintable to full BS & RAL colours. For more information and to browse Bradite's product range, visit www.bradite.com.



MAKE A DATE FOR THE P&D INDUSTRY'S ONLY NATIONAL EVENT!



RICOH ARENA, COVENTRY

VISIT paintshow.co.uk FOR FREE TICKETS
AND MORE INFORMATION
OR EMAIL INFO@PAINTSHOW.CO.UK



Your steps
to a great
career



At every stage of your decorating career, our **Dulux Academy courses** can deliver increased knowledge and understanding, enabling you to meet your personal and professional ambitions.

duluxacademy.co.uk

Variegated leaf

Cait is decorative painter working throughout UK and teaching from her studio in Perth, Scotland. You can see her work and connect with her on social media; Twitter and Instagram - @paintycait or Facebook - <https://www.facebook.com/carteblanchedecorativepainters/>.

Videos can be found on the Whitson's YouTube Channel

Many decorators will have done gilding with metal leaf or gold at some point in their career, but there are many gilding products that aren't often known about. I thought I would discuss variegated leaf.

Variegated leaf is composite leaf given a pattern through tarnishing with chemicals and heat. This patterning is not consistent, every book is slightly different so doing large scale projects takes a bit of patience and judicious choice of pattern or a different way of working. I use these mainly on furniture but there's nothing to stop you using them on walls

Tools -

For the basecoat - Dulux black high density foam mini roller for furniture or larger yellow ones for walls.

Acrylic size – Robersons applied with an Axus flock roller.

A quality skewings brush (aka a gilders mop) - we prefer "soft hair" for composite leaf.

Finger cots - which I prefer to gloves

A little package of cotton wool wrapped and tied up in silk



I will only discuss acrylic size however if you're going to be tackling an area that will get a lot of abuse, I would recommend using oil size and I prefer Lefranc & Bourgeois

Sample #1 - broken leaf using loose leaf. Because of the variation, this enables you to get a consistent "effect" with the leaf. Choose a basecoat that is compatible with the colour of the leaf. Here we have used Benjamin Moore Aura in Lush AF475. Once dry, lightly sand and apply the size. You should look for an even light distribution. You need to lay off with the roller until all bubbles and texture have disappeared. You can achieve a very fine thin even size coat with Robersons acrylic size. This will dry to

tack within about 30 minutes but always check - using your knuckle draw it lightly across the surface, if it squeaks it's ready. Tear the leaf into pieces and litter the surface with them. Take care not to touch the leaf with your fingers (hence the finger cots or gloves). You can see in the image the sized basecoat, the leaf material and the sample covered with loose pieces. This is a leaf hungry technique – you will need about 1.5-2 times the amount of leaf area to surface. Now it's time to "skew". Skewing is the term for removing the excess and skewings are the pieces that are removed. Pounce the surface to push pieces into place and then gently push the skewings into the

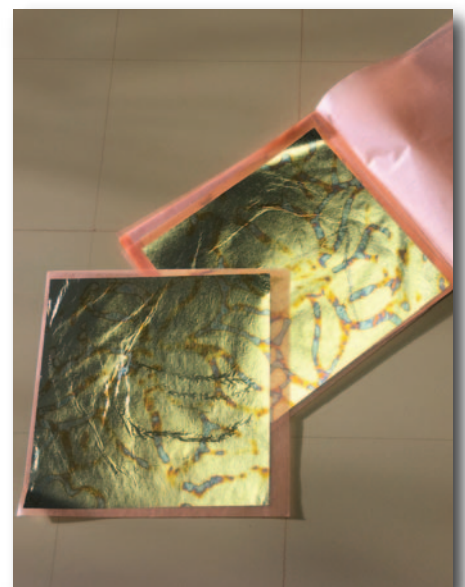


gaps, finishing by moving even the dusty tiny bits to cover the gaps. Once all the size is covered with leaf material, be a whole lot firmer in your removal method. Finally take the silk clad cotton wool and rub over the whole surface removing the last of the material. Cotton wool on its own will leave "tags" on the tiny areas where there is still some size exposed, silk won't, and it doesn't scratch the leaf.

Sample #2 - classic gridded, using transfer leaf (leaf pressed on paper). This particular pattern changes dramatically from book to book so I would use it for a tabletop or drawer fronts, there are other patterns where

you could get away with on larger areas not noticing the variations. This leaf was 136mm square so we made a grid of 130mm sq. Starting from a corner work methodically placing the corner of the leaf inside your marking, so the next leaf will leave a small overlap over the last. Once skew off and any little gaps can be filled in with remaining leaf left on the papers.

Once complete, degrease with a neutral cleaner and seal with a suitable lacquer for metal leaf to stop any further tarnishing. Leaf, size, skewings brush, degreaser and lacquer can be found at Gold Leaf Supplies.



From improving adhesion and covering stains to helping paint finishes last longer, primers can help transform even the most difficult of substrates.

Kevin O'Donnell from Crown Trade's technical department looks at some of the most common painting problems and how primers can provide the perfect solution.

A primer helps to get a substrate ready for painting by creating a surface that the top coat can adhere too, giving better coverage and opacity and helping the paint finish to last longer. Preparation is an important part of any project but so too is the need to balance achieving a high-quality finish with costs and time restraints. With that in mind, it's important to know when to prime and when it's not necessary as this will help save both time and money. Most previously painted surfaces may not require a primer undercoat but others, such as new substrates or those that are badly stained, most likely will.

New surfaces

If you're working on a new build property, a suitable primer for new woodwork is a great time-saving solution. This is because new wood is extremely porous and will soak up the paint product, meaning that more coats will need to be applied to get an even finish. The use of a primer creates a great base layer for the top coat, helping to achieve better opacity and nice even coverage with fewer top coats.

Newly plastered walls also require adequate preparation, particularly if lime plaster has been used. This is because new plaster may have a high alkaline content that can affect

Prime *examples*



the integrity of the paint finish if it isn't sealed properly. Here, an alkaline-resisting primer is recommended.

Stained surfaces

Older properties can also present problems that require a primer to overcome. For example, heavy stained walls and ceilings, such as those that have been damaged by nicotine or damp, can be hard to cover and the stains may still be visible, or will soon reappear, even after painting. It is well worth investing the time to treat the area with a stain-blocking primer that can effectively obliterate stains by providing a high opacity base coat. After priming, even a light or pale coloured top coat will look great and any discoloration or marks will be long gone.

Difficult surfaces

As well as painting broad wall and trim areas, many projects, particularly



refurbishment jobs, involve the decoration of more difficult to paint surfaces such as metalwork or tiling. By priming these

GRAB YOUR SAUSAGE!



- LESS EXPENSIVE
- EASY TO USE
- NO MESS
- LESS THAN 1% PLASTIC
- 96% LESS WASTE



IT'S BETTER FOR THE ENVIRONMENT!

Annually millions of waste plastic sealant and adhesive cartridges are sent to landfill. New Hippo ECO-PACs are 400ml aluminium foil sausages, priced to replace traditional single use plastic cartridges.

SCAN
FOR MORE
INFO





**ENGINEERED TO DELIVER
EXCEPTIONAL RESULTS**

LARGE AREA MASKING FOR SPRAYING <
PROTECT DOORS, WINDOWS & FLOORS <
2-IN-1 MASK, PAPER AND FILM <



tesaUK tesaUK tesaUK tesaUK_tape tesa.co.uk/craftsmen



difficult substrates first, the surface's adhesion is improved which means the top coat has something to 'grip' on to. This makes the top coat easier to apply, gives even coverage and can help the paint finish last significantly longer.

There are a number of specialist products

available but a good-quality all-purpose primer is also a convenient and cost-effective solution and one that is useful to always have in your van! Crown Trade's new water-based PX4 and solvent-based PX3 primers have been specifically developed for use on a variety of substrates and contain a whole range of benefits in just one can. Perfect for blocking stubborn stains, resisting alkaline attacks and giving great adhesion, the water-based PX4 primer is also low-odour and quick-drying which makes it great for jobs when a quick turnaround is required,



For more information and to find your nearest stockist, please visit www.crowntrade.co.uk, email Info@crowntrade.co.uk or call 0330 024 0297. You can also follow @CrownTradePaint on Twitter, CrownTradePaint on Facebook or Crown Paints on LinkedIn.



NEW RANGE

CENTRED
on you

125
— YEARS —

A simpler, faster way to a great finish

Dulux Decorator Centre brings you the latest in spray equipment, designed to make spraying simple, from great trusted brands such as **Graco, Tritech** and **Q-Tech**.

Visit your local to store for help on choosing the sprayer for the right job, plus tips on spray techniques and details of spray courses available at the **Dulux Academy**.

New range now available in-store, or online 24/7 at:
duluxdecoratorcentre.co.uk

Up to
5x faster
than using a
traditional roller

 **DECORATOR CENTRE**



AkzoNobel

Decorating solutions

from Axis Decor



Dark Mage – Exceptional Performance

Our Dark Mage brushes are part of our premium, onyx series. They have been created with innovation in mind and vary from what is currently available on the market. They improve both the quality of your work and efficiency.

Their bristles are made with a Tricho™ filament that splits off into finer strands at the brush tip, resulting in reduced brush mark visibility and extraordinary paint pick-up.

They have an ergonomic, FSC® certified beechwood handle which is ideal for prolonged use. They are the brushes for any job due to their high painting-holding capacity and exceptional performance with all paints. They come in five sizes (1", 1.5", 2", 2.5" and 3").

Further information on our brush range can be found on our website www.axisdecor.com

You can purchase Axis Décor products at all good decorating centres. For information on your nearest stockist, call +44 (0)20 8204 1422 or email info@axisdecor.com

Brewers *brief*

Choosing the right filler

Surface damage and imperfections can happen anywhere and in any substrate. Brewers pride themselves on offering first rate advice and guidance to help customers achieve the best results and are on hand to guide you through the array of filler products and uses available.

Powder Fillers: Mixed with water, powder fillers are often a cheaper option over other forms of filler and there are many options for both internal and external jobs.

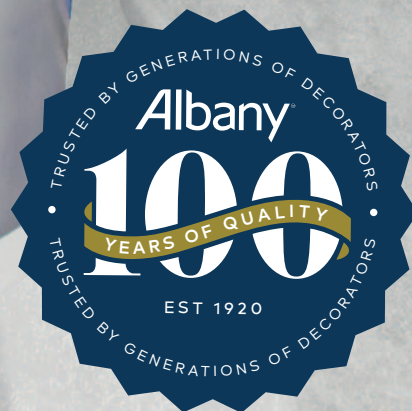
Lightweight Fillers: Ready-mixed, lightweight fillers are very convenient and can be used for small to mediumsize cracks and holes. Spreads easily, paintable and won't shrink or crack. Sanding may not be required.

Ready Mixed Fillers: Very convenient, they are a quick and easy solution and are very easy to apply and spread. Ideal for multi surfaces, for filling in small gaps and cracks.

Caulk: Generally made of flexible acrylic, mastic caulk has a smooth plastic type texture. Best used for filling gaps between skirting boards, doorframes or the edges of shelves and the wall. Lines of caulk can be prone to cracking if applied in the wrong conditions. Always follow manufacturer's advice on application, drying and painting over caulk.

Wood Fillers: There are two types of wood filler: Ready mixed and two part fillers (a mix of filler and chemical hardener). These come in a number of wood colours to make them inconspicuous but some are also stainable once applied. Two part fillers should be used in a ventilated area due to their strong odour. Two part fillers will set very quickly and the hard finish can be sanded smooth in far less time than their ready mixed counter-part.

Your choice for big jobs



20%
OFF



YOUR FIRST PURCHASE
WITH A BREWERS ACCOUNT*

Ask in-store or visit brewers.co.uk

*New cash or credit account holders only

Over 170 stores nationwide

A V33 paint

that helps decorators optimise profit

- Checking Out the Facts Behind the Claim -



V33's Marketing Manager, Richard Bradley, here talks about a new innovation in white paint that is set to transform the way painters and decorators approach certain internal projects.

Maintaining a good professional reputation is key for painters and decorators. Word of mouth is an important part of winning new business in the geographic location in which they operate, and it only takes one or two negative pieces of feedback to ruin the hard-won status of trustworthy tradesperson. So when a new paint is introduced that makes some pretty ground-breaking claims, how can decorators be confident that using it will enhance not spoil their reputation?

Part of the answer lies in the pedigree of the company launching the product and the other part in the quality of the product itself and the results it achieves.

The new product is called Multi-Surface Renovation from V33. The V33 brand is well established in Europe, particularly in France, where it has already garnered a great reputation for its high quality products. What is so special about this new paint? In a nutshell, it offers painters and decorators major time- and cost-saving benefits, whilst



ensuring a great finish that customers will appreciate.

This ground-breaking new matt white paint can be used quickly to transform over twenty surfaces including ceilings, plasterboard, radiators, doors and panelling, window frames plus painted or papered walls in just one application. The paint's minimum opacity of 98% means it is ideal for hiding marks. The resulting cost and time saved in being able to use just one product in one application means improved profit opportunities. By not having to purchase multiple products for multiple surfaces less wastage is facilitated, and the single application results in having to use less paint. An impressive 50m² of coverage can be achieved from one 5L tub. And the single coat application means time on site is



1 Problem

2 Solutions

3 Great Primers



Water
Based



coo-var®
PAINTS, PRIMERS AND SPECIALISED COATINGS

Shellac
Blocks Out

COVERING OUR CUSTOMERS' NEEDS SINCE 1908

coo-var®
PAINTS, PRIMERS AND SPECIALISED COATINGS

All-in-One
Surface Primer

COVERING OUR CUSTOMERS' NEEDS SINCE 1908

coo-var®
PAINTS, PRIMERS AND SPECIALISED COATINGS

Stain Lock Primer
Water Based Sprayable Primer & Sealer

COVERING OUR CUSTOMERS' NEEDS SINCE 1908



Solvent
Based



coo-var®

01482 328053

www.coo-var.co.uk



Environmentally Safer*
FORMULATION

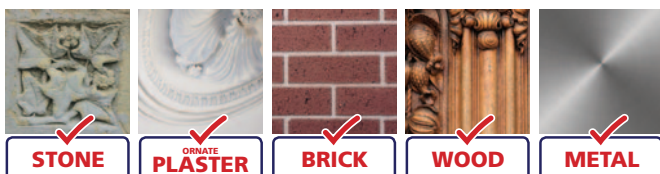


Peelaway®

The Original Poultice Paint Removal System

The safer, more efficient way to remove almost any type of paint or varnish in one easy application from a variety of substrates.

✓ Architecturally Specified



Paint Removal System 1
REMOVES UP TO 32 COATS
OF PAINT AND VARNISH
containing Oil, Lead
Polyurethane or water.

Suitable for Wood, Brick, Stone,
Concrete, Marble, Decorative
Plaster, Cornices and
Plaster walls.
Also removes painted
wall paper.
Water-based Alkaline
formulation.

Paint Removal System 7
REMOVES UP TO 20 COATS
OF PAINT AND VARNISH
of Architectural, Domestic and
Industrial Coatings.

No dangerous fumes or
toxic particles.
Modern alternative for
Peelaway® 1.
Does not require neutralising
on application.



The Peelaway Video
is available on our website.

Barrettine
TRUSTED BY THE PROFESSIONALS

St. Ivel Way, Warmley, Bristol BS30 8TY.
T: 0117 960 0060 F: 0117 935 2437
E: sales@barrettine.co.uk www.barrettinePro.co.uk

* Environmental claim compares to shot blasting, abrasion and heat guns where toxic paint particles can be released into the environment.



reduced
considerably,
leaving decorators
free to move on to
their next contract.
An integrated
undercoat further
adds to the paint's
cost-saving
credentials.

The new paint
does not run or

splatter, making it easy to apply with either a roller or a brush. It is
touch-dry in half an hour and completely dry in twelve hours.

V33 Multi-Surface Renovation is ideal for living rooms, bedrooms,
kitchens and bathrooms. So now a whole room can be redecorated
quickly and easily, with a truly tough and durable resultant finish
that will protect any professional reputation. It is important that
decorators are able to reassure customers that they will not be
'cutting corners'. One way in which this can be achieved is through
highlighting the technical aspects of the product and how it has
been developed. The paint's toughness and durability is borne out
by one of the key quality control processes used during its
development, which revealed that, once applied, it is resistant to
2,500 abrasive sponge passes. This is a great fact to be able to
communicate to customers who wish to be clear about the
durability of finish achieved.

The V33 group is based in France, and has an annual turnover of
220 million Euros. It is here that products are developed and refined.
Cutting-edge research and development laboratories are staffed by
approximately thirty engineers and technicians. Their activity
includes (but is not restricted to) constantly improving existing
products, seeking out new raw materials, optimising manufacturing
processes and methods, and acquiring better knowledge of
regulatory constraints. Innovation is a key driver in the product
development process. Continual market research and consumer
studies identify emerging trends and benefits. All of which means
professional decorators can be confident that V33 products offer the
most innovative and trend-led solutions of an unbeatable quality.

Homeowners are keen to know that their decorators can keep prices
competitive, and the multi-surface aspect of the new V33
Renovation white paint is therefore a great 'sales pitch' for the
trade.

We look forward to hearing about projects in which the new paint
has been applied. And watch this space for further V33 innovations
to be announced in 2020.

To find out more about this new innovation in decorating, go to
www.v33.co.uk to view a video about it. V33 can also be found
on Facebook at @V33UK and on LinkedIn.

YOU ASKED FOR A MORE
MANOEUVRABLE BRUSH.
WE HANDLED IT.

90mm



Introducing the Purdy Cub
with a short, lightweight, alder wood
handle, particularly suited for cutting in
and tackling tight corners.

A must for any Purdy Professional.

purdy.co.uk



Training *with Mirka*

The Mirka Training Centre in Milton Keynes offers a variety of courses on how to get the best out of their equipment – is this something you should consider for the development of your business? We put a few straightforward questions to Mirka.

My work is mainly domestic – is there much point in attending one of your courses?

Everyone is welcome to visit the Mirka Training Centre, from the domestic decorator to the national contractor. We have tools and abrasives to help with preparation on various applications and on all scales

Can you outline how a course would pan out over the day?

We would tailor bespoke content based on the needs and requirements of the attendees. Generally, we would start



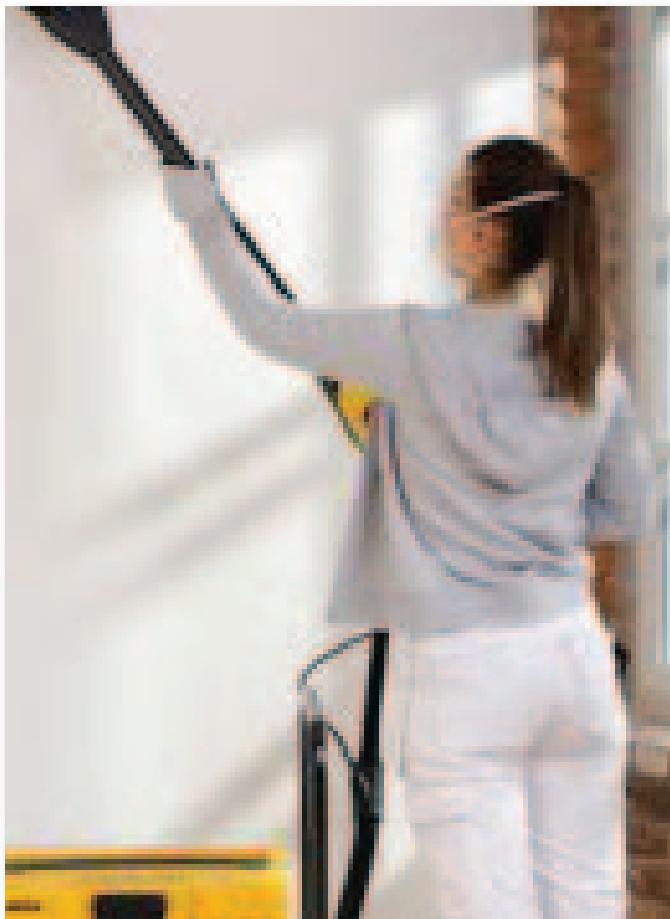
with a brief overview the Mirka business, followed by a review of our product range and discussing the features and benefits of our products. Finally, we would provide everyone with the opportunity to get hands on with our tools, sanding doors, walls & ceilings.

If I come away from the course knowing that the type of tools and dust extraction that Mirka has are necessary for me to have, what sort of financial commitment am I looking at?

Mirka offer a range of tools to suit all

budgets, from our hand sanding kits which retail for around £35 ex. VAT, to our LEROS large wall and ceiling sander which retails for around £750 ex.VAT. Our tools are available via all major decorators' merchants across the UK so you can buy our products from your local store.

If I find that there are cheaper options that seem to do the same job, explain if quality, functional aspects or longer lasting qualities can make the higher initial investment stack up financially?



Our tools are ergonomically designed to be the most compact, lightweight, and easy to use machines on the market. Any decorator will know that preparation is key to a good finish, and our aim is to make this part of the job as quick and easy as possible. When investing in our tools, you can be assured you are buying products designed to give you excellent performance and a dust free sanding experience.

I understand there is an app which can monitor tool performance through Bluetooth. Can you explain how this works?

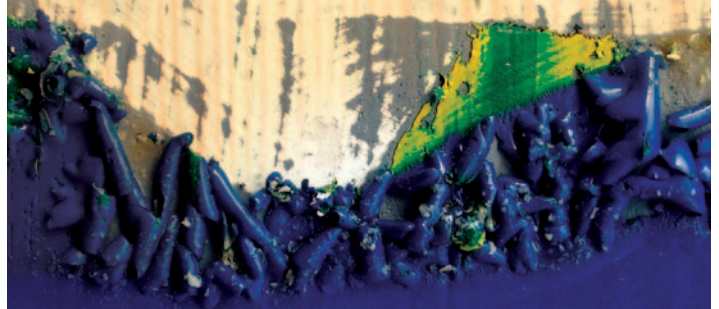
Our 230v sanders now have built in Bluetooth connectivity which enable you to Bluetooth our sanders to a suitable device. When used with our MyMirka app, which is free to download*, you can register the tool for our extended warranty and get a live vibration reading from the machine. If the vibration reading is high it will also give you ways of reducing vibration. The MyMirka app can also be used to contact Mirka, get the latest news, and download product brochures and guides.

**additional in-app purchases available*



Why wait?

**THE AWARD WINNING FORMULA
THAT WORKS!**



PAINT PANTHER

**The Award Winning
Paint & Varnish Remover**

Tears through multiple layers of paint & varnish **incredibly fast!**

REMOVES METALISED PAINT



SUPER FAST ✓

EASY TO APPLY ✓
NON-DRIIP GEL FORMULA ✓
REMOVES METALISED PAINTS ✓

AVAILABLE SIZES ✓
4L, 2.5L, 1L, 500ml, 250ml



Barretine
TRUSTED BY THE PROFESSIONALS

St. Ivel Way, Warmley, Bristol BS30 8TY.
T. 0117 960 0060 F. 0117 935 2437
E. sales@barrettine.co.uk
www.barrettinePro.co.uk

Gold winner of the DIY Week
Decorating Product of the Year 2011

GATIS CELMINS:

Apprentice Decorator of the Year

Bell Group's Gatis Celmins, 35, has won the 2019 Apprentice Decorator of the Year competition after a three-day contest hosted at the WorldSkills UK LIVE event at Birmingham's NEC. The Inverness UHI apprentice triumphed over eight other finalists thanks to the quality of his careful setting out and excellent time management, completing the complex design set by competition sponsor Crown Paints to an exceptionally high standard.

Gatis impressed the judges with his attention to detail and good brushwork in the regional heats, but the final required a step up from all competitors, as well as the ability to deal with the pressure-cooker environment of the packed NEC conference hall, with lots of noise and potential distractions all around.

He was joined on the podium by silver medallist Lewis Boyle and bronze medallist Abi Johnson, both of whom studied at Leeds College of Building and are employed by Bagnalls.

In the final, the competitors had 18 hours over three days to complete the decorating challenge devised by Crown Paints, which was a celebration of the company's 40-year sponsorship of the Apprentice Decorator of the Year competition and featured metallic paint as well as a complex multi-coloured streamer effect, half of which the finalists had to paint freehand.

All finalists were closely observed by a judging panel that included Crown Paints' competition manager Kevin O'Donnell, and Ben Deer, himself a former Crown Paints Apprentice Decorator of the Year.

Crown Paints competition manager, Kevin O'Donnell, said: "Crown Paints' design team



had created a tricky design this year that required the contestants to draw on all their skills and knowledge in order to finish the work. Not only did Gatis show a high level of skill, he completed his work within the 18 hour limit, diligently and with finesse. He scored well on every section of the judging criteria which makes him a very worthy winner and a credit to the Bell Group.

"I'd also like to congratulate our two runners up, Lewis and Abi, who both performed very well throughout the task too. Lewis and Abi could now both be eligible to be called up to the WorldSkills UK squad, which would give them the opportunity to compete against some of the best decorators in the world in the European competition in Graz, Austria next year followed by Shanghai in 2021."

Bell Group director, Colin Cochrane commented: "We are very proud of Gatis's

achievements and are pleased to see his dedication and skill being recognised. Competitions like the Apprentice Decorator of the Year serve greatly in motivating apprentices even further.

"Our apprentices bring great value to our business and are a significant part of our success. We believe today's apprentices will shape our future industry and are fundamental in addressing the skills shortage in the sector."

As well as marking the 40th anniversary of Crown Paints' sponsorship of the competition with the impressive final design, Crown Paints also celebrated with the launch of the Apprentice Decorator of the Year 40th Anniversary Yearbook, which celebrated the past, present and future of the competition. The Yearbook can be downloaded from the Crown Trade website.



MIRKA

SARAH
PAINT POT LADIES

Step into our world of dust free sanding

"It has changed my working day
tremendously because it's not only great
for myself, it is also great for my customers."

**For further information or to arrange a
demonstration, please contact Customer
Services on 01908 866100.**

www.mirka.co.uk

On test: Wet and Dry Vacuums

A vacuum cleaner may not be the first item in a decorator's tools kit but if they want good reviews on social media being seen to clean up after a day's work will get one's customers fingers typing. We have lined up five wet and dry vacuums and put them through their paces.

Draper DRA 20523

Price	£102.87
Tank Capacity	30 Litres
Motor Rating	1.6 kW
Weight	6.38 Kg
Where to Buy	Ebay



Sitting on four castors, the Draper 20523's accessories include foam filter, crevice tool, wet brush, paper dust bag, round brush and a cloth filter. This is the only vacuum in the line up without a socket for a sander et al. that said you can always connect the hose to dust outlet on the sander, switch on the vacuum and sand away, when finished sanding switch off the vacuum.



Clarke Vac King CVAC20PR2

Price	£77.99
Tank Capacity	12 Litres
Motor Rating	1.4 kW
Weight	5.9 Kg
Dimensions (L X W X H) mm	340 X 315 X 510
Where to Buy	Machine Mart

Set on four casters this 'bin' type wet and dry vacuum is easy to wheel about and comes complete with a full set of tools including an angle adaptor, crevice tool, brush adaptor and flexi hose. A paper bag, linen bag and a foam filter for water pick up is included. The extension tube is unusual in being made of metal and is telescopic so easily stowed away when not in use. There is a power tool adaptor so a sander or other power tool can be both connected power wise and the flexi hose can accept most of the dust created.

Screwfix Titan

Price	£54.99
Tank Capacity	30 Litres
Motor Rating	1.4 kW
Weight	7.8 Kg
Dimensions (L X W X H) mm	430 X 420 X 540
Where to Buy	Screwfix

Nicely priced Wet and Dry vacuum, well equipped with all the tools one would expect to find, 3 X plastic extension tubes, crevice tool, main nozzle and a round brush. There's a foam sleeve for clearing up the wet stuff and a paper collection bag for the dry. If you want to sand something down or connect some other dust producing power tool there's you can connect it to a power socket and then connect the hose to the dust outlet. Easy to move about on its wheels and castors.



NEW!
INNOVATION FROM DELTEC



Every painter and decorator knows, time is money. Deltec Tape has launched a solution for perfect masking in less time: Deltec Unitack® Paper. This unique paper is self-adhesive, sticky all over one side. It covers 4 times faster than normal masking paper! Thanks to the unique glue layer, Deltec Unitack® Paper is usable for surfaces like floors, stairs, windowsills, radiators and much more. This paper is reusable and can be easily adjusted after covering. Save time, save money and the best finish ever!

Request your free sample!
[Deltectape.com/sample](https://deltectape.com/sample)

Deltec Unitack® Paper

THE MOST RELIABLE PAPER TO COVER WITH

Cover 4 times faster!



Self-adhesive masking paper, sticky all over one side for universal masking applications

- Quick and easy covering
- Perfect for spraying
- Reusable
- Usable on surfaces like floors, stairs, windowsills, radiators and much more
- For indoor and outdoor use
- Never any glue residue up to 2 months
- Available sizes: 75mm, 150mm, 225mm, 300mm, 400mm and 600mm

**A
PRO
KNOWS**



[DELTECTAPE.COM](https://deltectape.com)



Vacmaster DVTB2015

Price	£129.99
Tank Capacity	15 Litres
Motor Rating	360 W
Weight	6.2 Kg
Dimensions (L X W X H) mm	530 X 250 X 320
Where to Buy	Amazon

The only cordless Vacuum in this line up. You get 15 minutes run time but this should be enough if you re not too messy. For all the world this machine looks like a tool box. You open the top and you find the normal tools, the tubes are stowed in two pipes along the base of the vacuum. This vacuum is the only one in the line up that has no wheels but you do get a carrying strap.



Vacmaster VK1630SWC

Price	£129.99
Tank Capacity	30 Litres
Motor Rating	1.6 kW
Weight	8.3 Kg
Dimensions (L X W X H) mm	440 X 39 X 670
Where to Buy	Amazon

Big powerful vacuum with a folding handle allowing easy stowage. Equipped with a power socket for your sander or an dust creating power tool. Comes with accessories that include foam filter, crevice tool, wet brush, paper dust bag, round brush and a cloth filter. Good quality vacuum with metal tubes and a good length of cable.



The UK's leading P&D Trade news website

PAINTING AND DECORATING NEWS

- Latest industry news
- Project reviews
- New products
- Training updates
- Offers
- Competitions
- Updated daily!



paintinganddecoratingnews.co.uk

**Got to have sharp
paint lines?**

Frog It.™

When it's time to tape,
trust the brand that pros
rate #1 for sharp lines
with no paint bleed.



SAVE TIME & MONEY

AND GET PROFESSIONAL RESULTS!

Visit FrogTape.co.uk

Self-adhesive masking paper

Deltec Tape has launched Unitack Paper, a self-adhesive masking paper formulated to be quick and easy to apply and suitable for spraying.

The self-adhesive masking paper requires no tape in order to apply it to the surface.

Deltec say it covers 4 times faster than conventional masking paper.

Unitack Paper is available in the following sizes: 75mm, 150mm, 225mm, 300mm, 400mm and 600mm.



Valspar broadens range

Valspar Trade Wood and Metal paint is now available in both water- and solvent-based formulations. There are three levels of sheen available and the water-based version can also be used on PVC. Both versions are available in pure brilliant white in 1l and 2.5l tins in eggshell, satin and gloss finishes. In addition, the water-based version can be mixed in any one of Valspar's 2.2 million colours.



HB42 Ultimate Pro-Finish Decorators Caulk



The HB42 Ultimate Pro-Finish Decorators Caulk is long lasting, movement-resistant and can be overpainted in just one hour. The white, solvent-free, acrylic Caulk is flexible up to 12.5 per cent and can be used in joints up to 25mm wide and 20mm deep.

The product can be used both inside and out for sealing around plasterboard joints, cornices and architraves, window frames and PVC cladding. It can also be used as an adhesive for polystyrene and for sealing cracks in plaster, brick and stone, concrete, skirting boards and walls.

OSMO UK enhances Topoil Range

Osmo UK has enhanced its TopOil product offering with the introduction of three new finishes; White, Terra and Graphite.

The TopOil product range now features seven colours, including clear matt, satin matt, natural matt and acacia matt. The three new shades allow Osmo UK to provide its customers with a colour option to match all current interior design trends.

- 3037 White, Satin - the wood's grain and natural characteristics are lightly white tinted transparently
- 3038 Terra, Satin - the wood's grain and natural characteristics are lightly tinted transparently, giving a result similar to a dark oak effect
- 3039 Graphite, Satin - the wood's grain and natural characteristics are lightly tinted transparently, giving a result similar to a dark grey effect



Albany launch new range of brushes and rollers

Brewers has introduced six new brushes in its Albany brand: block, angled, stubby, sash, lining fitch and round fitch brushes join the range plus a new dusting brush

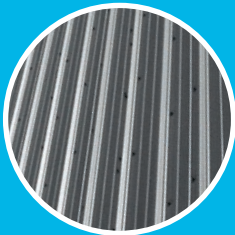
The complete range has moved to synthetic filaments, with different types and designs for each brush, meaning there'll be a brush to suit all customers – even those who still like a natural bristle.

There's also an improved wallpaper hanging brush design with filaments fixed via a loop method rather than traditional resin fixing, meaning it's more eco-friendly and less likely to lose filaments.

Additional roller sizes and fabrics are now available in widths up to 18 inches for contractors. An adjustable frame for 12- to 18-inch rollers has been introduced and plastic bearings are fitted to the 9-inch roller frame – making it more durable and less likely to jam or skid in use.

GREAT OUTDOORS!

USE ONE CAN ON YOUR
EXTERIOR PROJECTS



CLADDING



GUTTERING



UPVC WINDOWS



DOORS



HARDWOOD



METAL FENCING

PRIME BLOCK FINISH



- ♦ All-purpose water-based primer and finish in ONE CAN.
- ♦ Blocks, seals, locks, kills and hides stains.
- ♦ Anti-corrosive on all metals.
- ♦ Tintable to full BS, RAL and NCS colours.
- ♦ Interior/Exterior durability.
- ♦ Sticks to metals, woods & building plastics.



For more information, please email: enquiries@bradite.com

 @Braditepaints www.bradite.com

Dulux Decorator Centre extends its sealant range

Dulux Decorator Centre has extended its sealants and adhesives range and as part of its commitment to reducing decorating waste Dulux Decorator Centre Decorator's Caulk is now available in a foil wrapper. The 97 per cent recyclable foil wrapper, which has 20 per cent extra product compared to the standard cartridges, allows professionals to reduce their carbon footprint, while cutting down on the amount of waste that goes to landfill.

The new packaging is compatible with the Dulux Decorator Centre Caulk applicators and incorporates a design that compresses during use - significantly reducing the waste generated.

Dulux Decorator Centre has launched the recyclable packaging alongside an enhanced sealants and adhesives product range in stores across the UK and online, with products from one of the world's largest sealants providers, Bostik, now available. Bostik Instantly Paintable Caulk has been specially developed to be painted with oil or water-based paints immediately after application, perfect for a quick turnaround. High quality Bostik Exterior Caulk is rain resistant immediately after application and can also be painted with water-based or synthetic paints once cured.



Crown's new primers

Crown Trade's new high performance all-purpose PX primer range has been specifically developed to achieve excellent opacity and adhesion on even tricky surfaces such as tiles and ceramics, as well as helping to block stains and offer protection from alkaline attack. The new range offers a choice between the traditional solvent-based stain-blocking PX3 primer and the new water-based PX4, which also features the added advantage of a quick-drying and low-odour finish.

Both the new PX3 and PX4 primers can be used on a wide range of internal and external substrates and provide a quick and easy solution to preparing even the most difficult surfaces for painting. Offering excellent wet and dry adhesion, the new primers are the perfect partner for use in tiled bathroom and kitchen areas as they provide a hardwearing coating that won't peel or blister when exposed to water. Also ideally suited for use on newly plastered walls and masonry, both products can seal porous surfaces and help prevent damage caused by a high alkaline content.

Holster Pockets in Snickers' Trousers

Snickers Workwear's hi-tech fabrics and body-mapping designs give plenty of scope for every professional craftsman and woman to stretch their performance on site comfortably. Designed for a wide variety of jobs on site, these LiteWork 4-way stretch work trousers now feature detachable holster pockets and there's also ruler, and cargo pockets for easy access to tools and fixings. They're all Cordura® reinforced for durability.



PALETTE WOOD DYE



Quick-drying dye ideal for colouring interior woodwork

- Colours can be mixed to vary the shade
- Light stability for excellent colour retention
- Easily absorbed for both soft and hard wood
- Specialist formula minimises raising of wood grain
- Water based formula is quick drying

Can also be
mixed with
Liberon Natural
Finish Varnishes
for a single
application



Palette Wood Dye Colours*



1. Medium Oak, 2. Dark Oak, 3. Tudor Oak, 4. Georgian Mahogany, 5. Victorian Mahogany,
6. Antique Pine, 7. Golden Pine, 8. Teak, 9. Walnut, 10. Yew, 11. White, 12. Light Oak 13. Ebony

*not all colours available in all sizes.



SIZES
250ml | 500ml | 5L



DRYING TIME
2HRS MIN



COVERAGE
1L = 8-16M²



GROUP
A V33 Group Company



visit liberon.co.uk for more



Frenchic Detailing Brushes

There is now set of 4 smaller brushes for the decorative painter. Handcrafted in Italy, these brushes are ideal for using on ornate carving and finer detail.

Made of quality, soft synthetic fibre producing a smooth and even finish, there is also another set available that includes a larger flat, smaller flat, angled and fine point brush.

Timantti for public spaces

TeknosPro has developed its Timantti portfolio for use in public spaces. The Timantti range includes a primer, special acrylates, a moisture sealer and wall paint. Timantti Clean is TeknosPro's solution for maintaining the antibacterial efficiency of surfaces. Timantti Clean's antimicrobial properties make it the ideal product for use in hospitals, nurseries and other areas where optimum hygiene levels are essential.

The paint works by utilising active ingredient BioCote® in order to prevent the multiplication of harmful bacteria cells. This silver phosphate glass antimicrobial technology ensures that the entire paint film is active. The concentration on hygiene is unparalleled and this focus on safety is extended to its fire neutral classification; Timantti Clean is guaranteed not to contribute to the spread of flame and meets EN 13501-1: B - s1, d0 classification.

Expression from Hamilton

Developed in response to changing paint formulations, Expression brushes are designed to provide an exceptional finish with today's water-based paints. Created in conjunction with Hamilton's Professional Decorators' Panel to bring valuable insight and practical experience from end users, every brush has been independently tested using the latest Topography Analysis in Invenntia, Sweden to ensure a consistently high quality, smooth finish.

All Expression brushes feature Max Stroke™, a synthetic filament blend comprising a mix of different types of filament. New production processes have been adopted to achieve a softer, fuller appearance on the tips of the brushes. This feature guarantees the smoothest and most consistent finish is achieved.



Ciret's Masq

Ciret has launched a new range of masking tapes called Masq. The range has been developed, say Ciret, to allow customers to work on every possible project with the most efficient and professional option of masking tape.

The company has produced a comprehensive application guide to help users choose the correct tape for individual jobs, cutting down on costs and bad results.

The Masq collection comprises of eight masking solutions ranging from versatile interior & exterior painters tapes to interior only masking tapes.



**Helping contractors, by
supplying temporary contract
decorators nationwide**



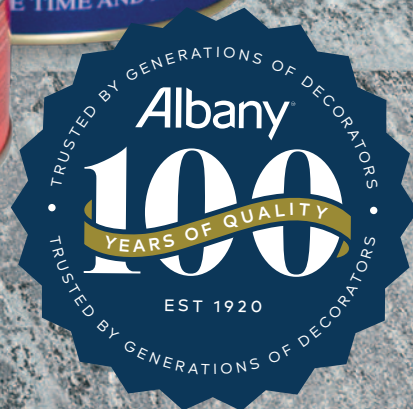
Leeds: 0113 202 6050

Glasgow: 0141 404 3456

Bristol: 0117 374 3077

info@allianceworkforce.co.uk www.allianceworkforce.co.uk

Your choice for tough jobs



20%
OFF



YOUR FIRST PURCHASE
WITH A BREWERS ACCOUNT*

Ask in-store or visit brewers.co.uk

*New cash or credit account holders only

Over 170 stores nationwide

TRIMACO X•BOARD PAINT + REMODEL

- PAINTING + DECORATING
- HOME IMPROVEMENT
- BUILDING
- TILING
- CONCRETE



SPILL BLOCK® LEAK RESISTANT PROTECTION

2.5X
THICKER THAN
BUILDER'S PAPER



X•Board Paint + Remodel is breathable to allow floors to continue the curing process. This easy-to-use painter board lays flat when rolled out and our Spill Block® technology ensures no paint, mud or water will get through to your surface. X•Board will last for the endurance of the job and is proudly made in the USA.

TRIMACO

Manufacturers of KleenEdge Low Tack Painting Tape
www.trimaco.com

Ciret Ltd

UK distributor for Trimaco products
02392 457450 | www.ciret.co.uk

AVAILABLE FROM YOUR LOCAL DECORATORS MERCHANTS