

The Professional Painter & Decorator

TRIMACO
X·BOARD®
PAINT + REMODEL

LEAK RESISTANT,
BREATHABLE
FLOOR + SURFACE
PROTECTION



ROLLS OUT FLAT!

2.5X
THICKER THAN
BUILDER'S PAPER



Your choice for paint and wallpaper



20%
OFF



YOUR FIRST PURCHASE
WITH A BREWERS ACCOUNT*

Ask in-store or visit brewers.co.uk

*New cash or credit account holders only

Over 180 stores nationwide

The Professional Painter & Decorator

INCORPORATING THE PAINTING & DECORATING JOURNAL

News	2
Limed oak	10
Limed Oak is a classic finish now used all over home, office and retail spaces – from furniture to floors it is very popular.	
Dulux Heritage - a blend of modern style and substance	12
Dulux is introducing two new premium paints and a curated range of classic colours, supporting professionals to meet more high-end demands from UK homeowners.	
Matt for Bradite's One Can	16
Customer demand has led to Bradite expanding its product range to include a matt version of One Can.	
Identifying Damp & Condensation - How can paint help	20
Coo-Var gives an insight to how its specialist coatings work and where they should be used.	
No more dangerous kickbacks	23
Increase safety when drilling, screwdriving and sawing with the new KickbackStop technology from Festool.	
Dulux Trade introduces 99.9% VOC-free 1d Airsure range	26
Dulux Trade is strengthening its commitment to reducing the environmental impact of paint with the launch of a new product range that is 99.9% free of volatile organic compounds Renault Zoe	
A new era for trim	28
David Baines of PPG, explores the issues painters and decorators face on trim surfaces and how Johnstone's Trade Aqua Guard has been designed to help tackle them.	
Easy stripping	32
PeelTec's paint removal technology, which is 100% methyl Chloride free, removes paint in minutes, and won't damage the base material or the user	
Product Testing : cordless drills	38
On test: Renault Zoe electric van	42
Marketplace	46
A paint that actively cleans the air	47

A new coating that can clean the air is now available. Apparently 45 litres has the cleansing effect of a tree.



**The National
Painting & Decorating Show
Nov 23rd - Nov 24th 2021**

Editorial David Pescod
Advertising Richard Daynes

Published by
DPA Publishing Ltd
Stoney Lane Barn
Stoney Lane
Bovingdon
Herts HP3 0LY

Editorial: 01303 238002
Email: ppd.editorial@gmail.com

Advertising & Subscriptions: 01442 832715

Production The Orange Design Group

Printed by Wyndeham, Roche
Subscription £18.00 p.a. (in the UK)

PAINTING AND DECORATING NEWS

paintinganddecoratingnews.co.uk

The UK's leading P&D
trade news website



- Products
- Projects
- Services
- Competitions

paintinganddecoratingnews.co.uk

Charity publishes support pack for workers who fall from height

THE NO FALLS FOUNDATION, the UK charity dedicated to preventing falls from height and helping people affected by the life-changing consequences of a fall, has published a Support Pack signposting organisations and resources that can provide advice and assistance following a fall from height in the workplace.

It also includes details of the charity's Ambassadors who have all faced the aftermath and consequences of a fall and are available to provide advice and guidance to anyone experiencing the traumatic affects of a fall and wondering what to do next.

The free pack covers a wide range of topics, including:

- What to do immediately;
- What financial assistance may be available;
- How to begin a personal injury claim;
- Support with transport and home adaptations;
- Using the No Falls befriending service;
- Organisations that can help with issues of mental health.

For those who have experienced the loss of a loved one as a result of a fall from height, the pack also provides details of those organisations that can offer help and support.

Comments the charity's manager, Hannah Williams: "What should have been a perfectly normal day has ended in a potentially life-shattering accident. What do you do now? Who can you turn to? What help is available? The pack attempts to answer these questions and provides contact details for the Foundation."

The No Falls Foundation also publishes a bi-monthly e-newsletter Saving Lives which contains details of all the latest news and developments at the charity. You can sign up at www.nofallsfoundation.org



Decorator Centre partners with Ripple Lockers

Dulux Decorator Centre has partnered with Ripple Lockers to introduce a completely contact free service. The new collection lockers have been introduced as part of the Dulux Decorator Centre 'Safeserve' procedures to help keep customers and store colleagues safe during the ongoing Coronavirus pandemic.

The lockers, introduced in 12 Dulux Decorator Centre stores across the UK, make it easier for decorators to collect products at a time that is suitable to them, with collection slots available 24/7.

Collection lockers are also sanitised between uses and make it easier for customers to socially distance.

The new service will save decorators time as they can drive up to the locker, access securely with a unique PIN and load their order directly into their vehicle.

In addition to the lockers, Dulux Decorator Centre has also introduced a new 'Drive and Collect' service at 12 stores.

The service is easy to use and allows decorators to order their products online so they're ready and waiting when they drive up to the store. A store colleague will then bring the order to a customer's car or van for them to load it up and drive away.

For more information on the Collection Lockers, please visit www.duluxdecoratorcentre.co.uk/collection-lockers and for further information on Drive and Collect visit www.duluxdecoratorcentre.co.uk/drive-and-collect.

Electric van winner

The all-electric Vauxhall Vivaro-e has been named the 2021 International Van of the Year. This is the first time a fully electric van has won the overall title.

Judges praised the electric Vivaro-e's extensive zero emissions range, excellent load capacity and high levels of technology. Vauxhall previously won the International Van of the Year title in 2019 with the Combo Cargo van.

The Vauxhall Vivaro-e starts from £27,028.33 OTR after the current Plug-in Van Grant and excluding VAT and is available with 50kWh or 75kWh battery options. Capable of up to 205 miles from a single charge, the Vivaro-e supports up to 100kW rapid charging with an 80% charge taking 30 minutes for 50kWh models and 45 minutes for 75kWh variants.

With a 6.6m3 maximum load volume and 1,226kg the Vivaro-e suits the needs of all business and private users and is crucially exempt from current congestion and ultra-low emissions charges.

To feel how
SMOOTH
the finish is
run your
fingers over
this page.



HERITAGE

EXTRAORDINARY PAINT
for EVERYDAY LIFE



WAXED KHAKI *in* VELVET MATT



Sandtex breathes new life into cellar conversion

Developed for use in challenging conditions both inside and out, Sandtex Trade's X-Treme X-Posure® masonry paint has helped transform a 100-year-old warehouse into an atmospheric furniture and interior store and a cosy new coffee shop.

Located in Llandeilo, Wales, Davies & Co has sympathetically converted the original Farmers' Co-Op building to create a new furniture and interior shopping experience and The Lounge, a new café area for customers. The whole project takes its inspiration from store owner Marlene Davies' own lifelong commitment to promoting the use of up-cycled and recycled materials, with many period features including the original stone walls and oak floor boards playing a key part in the interior design scheme.

Although usually applied to external areas, X-Treme X-Posure® was ideally suited for use on the solid stone walls and ceilings thanks to its microporous properties. Having suffered from years of damp, dark conditions, it was vital, that in its restoration, the stonework was allowed to 'breathe' and so after being suitably primed, the walls were coated in Sandtex's high-performance water-based masonry paint. To further enhance the heritage of the building, whilst being careful to avoid a pastiche interior decor, the main broad wall areas painted in Anthracite Grey to add a stylish and contemporary twist. The application of the paint was completed by Pro-Clean Painting & Decorating Ltd.

As well as providing a matt finish that will offer dirt-resistance and colour retention, X-Treme X-Posure® has adhesion properties which makes it suitable for even the most challenging of substrates. Its flexible formulation also helps disguise hairline cracks and stops them reappearing.

Free guidance from PASMA

With changes to BS EN 1004 taking full effect later in 2021, PASMA is urging all businesses using mobile access towers to use the transition period wisely.

The not-for-profit body has released comprehensive guidance to help organisations understand the updates included in the new standard and most importantly, how it affects them. The free document is aimed at anyone who buys, hires, owns or uses mobile access towers, or is responsible for height safety in the workplace. It explains:

- The new definition of a mobile access tower
- The 4 main areas of change
- A timeline for the rollout
- How (and when) to start preparing
- How to choose safe towers for work and home

The new standard brings a wider range of towers into scope, along with a raft of new measures to make them safer than ever, so it's essential that safety-conscious organisations are up to speed.

The revision of BS EN 1004 (now known as BS EN 1004 Part 1) took 10 years from start to finish, and PASMA participated extensively, with the support of its members, to help shape the updates. The association is now using its experience and inside knowledge to help the whole industry prepare.

Don Aers, Technical Director at PASMA, commented: "The old standard won't be withdrawn until November, so you have time. The first step is to assess your current situation – does your purchasing policy include guidance on selecting quality equipment? If you own towers, are they certified to the right standard? Are they in good working condition? These are the things organisations should be focused on now and PASMA's guidance talks them through this audit process, step by step."

The guidance is available at: pasma.co.uk/en1004

Now
available in
thousands of
colours



**Your choice for
interior trim**

20%
OFF



YOUR FIRST PURCHASE
WITH A BREWERS ACCOUNT*

Ask in-store or visit brewers.co.uk

*New cash or credit account holders only

Over 180 stores nationwide

Dulux Select Decorators' virtual pub

Members of the Dulux Select Decorators scheme have been keeping their spirits up over lockdown by meeting at their own virtual pub.

The Fitch & Bristle opens its doors via Zoom every Friday night, allowing any of the 575 Select Decorators in the scheme to stop by, catch up with friends or just chat with some like-minded individuals.

Much like a typical local, the virtual pub has seen regulars joined by their partners, pets and even children.

Dulux Select Decorator Darren Whitfield said "The Fitch & Bristle has been fantastic in these trying times where we can pop into the virtual pub for one or two scoops, stay the evening or even end up in an after-hours virtual lock-in.

"It's been a fantastic chance to have a natter with some of the other decorators discussing all that's going on in the world around us at the end of a long week.

"For me it really does feel like a night out - I've even been known to have a shower and splash on some aftershave before I join!"

Vickie Mather, Dulux Select Decorators Lead, added:

"With the Dulux Select Decorator scheme, we have always strived to offer as much professional support as possible to our members and we see the virtual pub as an extension of the support we provide personally for them.

"We're delighted that The Fitch & Bristle is providing such a rich source of joy for our community of decorators. In these challenging times, the camaraderie between those in the scheme has been incredibly uplifting to see."

Dulux Select Decorators are a group of experienced decorators who have passed a comprehensive workmanship assessment, with Dulux guaranteeing their work for two years after completion.

Professional decorators can only apply to join the scheme once they've been a painter and decorator for three years and have run a successful business for at least a year, ensuring that Dulux is carefully selecting from the best in the trade.

For more information visit: <https://www.duluxtradepaintexpert.co.uk/en/services/dulux-select-decorator>.

Tembé environmental push

Tembe's foil project to replace plastic cartridges began in late 2018, early 2019. The world faces the challenge of making huge environmental changes over the next two decades and with it the construction industry. The annual estimate of plastic cartridges going to landfill is between 100 and 150 million, most are double walled to increase the shelf life of the product inside. The plan is to change the sealant market forever and move users away from single use plastic cartridges to foils in the same way the market moved people to cartridges 40 years ago by getting the applicator gun in their hand for a couple of £'s. Tembe offers a range of 14 foils for all job's within the adhesive, filler and sealant categories and one for each performance level of good, better and best.

The foils offer 400ml for the same price as a 290ml cartridge and contain 96% less waste and contains less than 1% plastic. All Sealants can be removed from the gun and reused again in the future. Once removed it is clearly visible how much sealant remains in the foil, unlike the cartridge and plunger system.

The aluminium barreled gun required retails at £12+vat but are regularly given away with orders.

Brewery paint

Town Brewery, based in Glossop. Having occupied a modest 1,500 sq ft unit at absolute capacity for over a decade, Howard Town embarked on a painstaking renovation of a 6,000 sq ft warehouse next door, putting in a state-of-the-art, Simatec brewhouse.

As part of the renovation Howard Town Brewery worked closely with HMG Paints to specify the correct coatings. Due to the environment a unique coating was developed by the Manchester based company dubbed "Brewery Paint". The high gloss anti-microbial acrylic coating was utilised on the walls and ceiling of the refurbished brewery. The coating utilises a silver ion additive which provides lasting and effective protection against harmful bacteria, mould, fungi and viruses by up to 99.99%.

Howard Town is best known for being a traditional cask brewery with a long-standing reputation for quality cask ale, meticulous about balance and consistency. As part of the refurbishment HMG's standard range of decorative products were also used in the new Tap Room where customers can sample the beers on site. For the Tap Room the company used HMG's Vinyl Matt Emulsion and Trim Paints which were colour matched to the Howard Town brand colours.



Vivaro-electrifying British business



Winner of International
Van of the Year 2021
New all-electric Vivaro-e



Carries British business



Fuel economy and CO₂ results for the New Vivaro-e Elite L1 3100 100kW (136PS) – 75kWh battery. Mpg (l/100km): N/A. CO₂ emissions: 0g/km. Electric range up to 205 miles (WLTP).

The New Vivaro-e is a battery electric vehicle requiring mains electricity for charging. Range data given has been determined according to WLTP test procedure methodology. The figures shown are intended for comparability purposes only and should only be compared to other cars tested to the same technical standard. The range you achieve under real world driving conditions will depend upon a number of factors, including but not limited to: the accessories fitted (pre and post registration); charging frequency; personal driving style; vehicle payload and route characteristics; variations in weather; heating/air conditioning; pre-conditioning and battery condition. Please note, EV range assumes that vehicle has been pre-conditioned prior to journey. WLTP figure includes 50% payload. Please note, EV range is achieved in 'normal' mode. 'Power' mode will decrease range and 'Eco' mode will extend range although power, torque and climate control are limited. For more information, contact your local Vauxhall Retailer.

Antimicrobial coatings set to grow

According to a report by Grand View Research*, the global antimicrobial coatings market is expected to grow at a compound annual growth rate of 12.8 per cent from 2020 to 2027 – and antimicrobial additives provider BioCote has reported an unprecedented increase in revenue over the last year – with many of its customers requiring antimicrobial paints and coatings. David Hall, managing director of BioCote, comments:

“Demand for products containing integrated antimicrobial additives, which significantly reduce the growth of a wide range of microbes, is increasing. In recent times, and particularly over the past year, people have become much more aware that everyday objects and surfaces can harbour microbes. To help prevent cross-contamination, we are all spending more time washing our hands and sanitising the surfaces we touch and the products we use – but antimicrobial additives, which can be manufactured into a wide range of products, including paints and coatings, are becoming more popular too.

“Antimicrobial additives can be manufactured directly into all types of paints and coatings – whether solvent-, oil- or water-based, liquid, powder, ink, lacquer or varnish, and whether used internally or externally. Our technology acts in minutes and can reduce the number of microbes on a protected surface by up to 86 per cent in just 15 minutes and by up to 99.99 per cent in a 24-hour period.

“Introducing an additive will not affect the colour of a paint or coating, the finish, or the application process. Durability will be increased compared to an unprotected product, and staining, unpleasant odours and material degradation will also be minimised. The technology will work continuously for the expected lifetime of the paint or coating; if manufactured in properly it does not wear out or wash off.”

BioCote is a leading antimicrobial additives provider. Its antimicrobial additives can be integrated into paints, coatings, plastics and textiles, and are used across a wide range of sectors, including healthcare, education, construction, transportation, food, home and leisure.

Support Can Back

Crown Decorating Centres is calling on all decorators in the UK to get involved in its Can Back scheme and play their part in helping to recycle every paint can sold through the network.

Through the Can Back scheme, which Crown has successfully run since 2013, CDC account holders are able to drop off their empty paint cans to any one of 120 Crown Decorating Centres across the country, free of charge. And this year, the scheme has been extended to include paint cans from any manufacturer, not just Crown Paints products. The only stipulation is that cans must be completely clean and dry to be accepted.

Working in partnership with social enterprise company, NIMTECH, which is based at Crown's two manufacturing plants in Darwen and Hull, all the paint cans returned through the scheme will be fully recycled. In the last 12 months, 200 tonnes of cans were recycled by NIMTECH through the Can Back scheme and the ambitious target this year is to collect and recycle every single can sold through the CDC network.

Naiem Wafa, Crown Decorating Centre director, commented, “We’re committed to reducing our impact on the environment and tackling the issue of plastic waste is high on the agenda for us. The Can Back scheme is a really simple way for all our customers to play their part and I’m sure together we’ll reach our target this year.

“We wanted to encourage as many customers as possible to back the scheme and benefit from it too, which is why we’re accepting any paint can from any manufacturer. Let’s all work together to play our part to make the sector more sustainable for future generations - one can at a time.”

To find out more about Crown Decorating Centres please visit

<https://www.crowndecoratingcentres.co.uk/> or follow Crown Decorating Centres on Twitter or Facebook



Welcome return for the big one

The National Painting and Decorating Show returns this year – and with masses to see and catch up on. If you are planning to get to an industry event in 2021 this really is the one worth waiting for !

Following last year's postponement due to COVID-19 , the UK's national showcase is set to return to Coventry's Ricoh Arena in November with renewed vigour and an even more exciting mix of new products, innovation, practical demonstrations , freebies and unrivalled special deals – an event sorely needed after the past difficult months.

The show organisers are working on a range of new ideas and feature areas designed to improve the skills and business fortunes of working P&D professionals – further details to come but it's not too soon to register your interest in the event and be first in line for free tickets ! Go to www.paintshow.co.uk

See you there – a warm welcome from Professional Painter and Decorator awaits !

TRIMACO X•BOARD® PAINT + REMODEL

- PAINTING + DECORATING
- HOME IMPROVEMENT
- BUILDING / TILING / CONCRETE
- WORKS BEST WITH
X•BOARD SEAM TAPE



SPILL BLOCK® LEAK RESISTANT PROTECTION

2.5X
THICKER THAN
BUILDER'S PAPER



X•Board® Paint + Remodel is breathable to allow floors to continue the curing process. This easy-to-use painter board lays flat when rolled out and our Spill Block® technology ensures no paint, mud or water will get through to your surface. X•Board will last for the endurance of the job and is proudly made in the USA.

TRIMACO

Manufacturers of KleenEdge Low Tack Painting Tape
www.trimaco.com

Ciret Ltd

UK distributor for Trimaco products
02392 457450 | www.ciret.co.uk

AVAILABLE FROM YOUR LOCAL DECORATORS MERCHANTS

Limed oak

Cait is decorative painter working throughout UK and teaching from her studio in Perth, Scotland. You can see her work and connect with her on social media; Twitter and Instagram - @paintycait or Facebook - <https://www.facebook.com/carteblanchedecorativepainters/>.

Videos can be found on the Whitson's YouTube Channel

Limed Oak is a classic finish now used all over home, office and retail spaces – from furniture to floors it is very popular. Originally this look came about out of necessity – it preserved the wood. The oak grain was raked out and lime mixed with a wax was worked into the pores of the wood. Lime calcifies so makes the surface harder; it is vapour permeable so allows the wood to breath; it is an alkali and a natural antifungal resisting mould and rot; it also changed the wood and made it less attractive to bugs that might infest the timber. You can see that in the 16th Century this was a useful technique to preserve your oak timber.

Today the technique is achieved using waxes and pastes without lime, but of course, we can paint it too!!



I first learned to grain limed oak with Leonard Pardon, it was a quick effective commercial technique. This more sophisticated style however I later learned from Patrick Laheyne, a very fine decorative painter from Belgium. His technique gives an added dimension as the whiting

added to the combed layer gives it the texture of wood when you run your fingers over it.

Mix a colour that is darker than the base coat– the colours are a guideline, if you are matching to an existing bit of timber then you will



need to adjust accordingly. Once you have your colour mixed in the medium thicken it with whiting to a paste. The whiting makes the mix drier and less easily spread, it also takes a little longer to dry hard, so plan for this

Draw the grain using hessian either

stretched over a metal comb or just freehand. Make sure each stroke through the glaze follows the last – it can vary but make the variation flow from the last. The image on the left is done with hessian, the one on the right just the combs. Break the grain with a fine metal comb. This can be



Tools/Colours -

Base Colour –Dulux Bamboo 08C37 or similar

Medium - 1 part linseed oil, 2 parts white spirit, some oil based varnish, 5-10% Terebine driers

Oil Colours Stage 1 – Raw Sienna, Raw/Burnt Umber, Yellow Ochre, Ultramarine Blue, Zinc White

Oil Colours Stage 2 – Raw Umber and Zinc White

Dry Pigments – Whiting

done in 2 ways. 1/. coming down with the comb in a slightly wavy manner
2/. working with short upward strokes

Once dry mix an off-white glaze using zinc and raw umber mixed with medium. Apply the colour evenly over the surface and soften with a badger. Create the heart grain with a piece of cloth stretched over a thumb piece or a rubber shaper. For more variation you can use both. Using source material digitally changed to black and white like the example of oak grain shown, I find very useful. The side grain is executed in the same way as the first stage –

Dulux Heritage

- a blend of modern style and substance



Dulux is introducing two new premium paints and a curated range of classic colours, supporting professionals to meet more high-end demands from UK homeowners.



Dulux Heritage is a new range of professional quality paints that deliver a 'smooth to the touch' aesthetic along with the tough, lasting durability needed for everyday life. The collection of beautiful colours are inspired by significant periods of British decorating history combined with contemporary and future design trends, skillfully researched by historical colour experts and curated by the expert team at Dulux.

Dulux Heritage colours have been popular with professional decorators and interior designers for many years. Now, to give them even more confidence in the quality of the finish, Dulux has invested in the development of two innovative new Heritage paints, comprising a new emulsion for walls and ceilings with a Velvet Matt finish and a premium solvent free Eggshell for trim.

It is this blend of colour expertise married with technical innovation that sets Dulux Heritage apart. The result allows

professionals to offer customers a range of colours that are effortlessly elegant for today's homes in a premium paint that is easy to apply to walls, woodwork or metalwork.

The palette is designed to contain the perfect balance of pale, mid and deep shades from the palest duck egg to deepest aubergine, along with a perfect white for every colour scheme.

Dulux Heritage paint goes on smoothly and once on the wall, the rich colours are accentuated with a soft, tactile finish that feels soft and luxurious to the touch, just like velvet.

The Dulux Heritage Velvet Matt emulsion is formulated with premium quality pigments to guarantee excellent depth of colour and contains specially blended clays for effortless application and the irresistible soft to touch finish that will stand up to customers' busy lives.

Dulux Heritage Eggshell is a durable and hard-wearing water-based eggshell for use

VISIBLE PROTECTION AGAINST MOULD & ALGAE



NEW
IMPROVED
FORMULATION

- ✓ Best ever mould and algae protection†
- ✓ Excellent opacity and easy to apply
- ✓ Anti-Fade Technology for long lasting colour*
- ✓ Shower resistant in 30 minutes



†Compared to previous Smooth Masonry formulations. *Excluding white.



on interior wood and metal in a tough formulation. It is easy to apply, quick drying and low odour.

Dulux UK Creative Director Marianne Shillingford explains: "With the bespoke formulation of Velvet Matt for walls and ceilings, Dulux has created its most high-quality finish to date, a beautiful durable formulation that complements the aesthetic of the premium colour range.

"Heritage is the ultimate professional quality paint with a colour palette that combines the best classic colours from the past, present and future.

"What is great now is that it's easier than ever for decorators and designers to create sophisticated colour schemes in a velvety matt finish that actually feels as good as it looks on their walls. It's an exciting innovation and sets this range apart from anything else on the market.

"Decorators have trusted Dulux for 90 years and that's a heritage we are proud to keep going with the launch of the new range."

The quality of Heritage is backed by the Dulux Promise that each can of paint will deliver the perfect colour, uniform finish and the coverage stated, or Dulux will replace it.

The new Heritage paints will be available in selected decorator merchants from January 2021.

For more information, visit:
www.duluxheritage.co.uk

Q&A

Dulux Creative Director, Marianne Shillingford answers some key questions



for Professional Painter & Decorator about the launch of the brand new premium Heritage range by Dulux.

Why has Dulux launched a premium range of paints?

We've always had Heritage colours available to be mixed in our Dulux Trade paints, but we wanted to create a paint that will help decorators meet the demand for more premium finishes from their customers. The Dulux Heritage range of paints has been launched to offer everyone professional quality luxurious paints that are easy to apply, long lasting and velvet smooth to the touch.

How were the Heritage colours chosen?

The Heritage collection is a combination of the most popular authentic colours from significant periods of British decorating history and the best contemporary trend led colours for the homes of today and tomorrow. It was important that the colours felt premium and would stand the test of time. We spent a lot of time researching the colours, drawing on our colour knowledge and decorating experience, plus current trends and future interior design trend forecasts.

Which colours do you think will be most popular?

At the moment, there is a trend towards rich deep colours and soft organic shades. The Heritage palette has plenty of both to choose from. Some of my personal favourites are Cherry Truffle and the



decadent Deep Ultramarine, which I think pair beautifully with paler shades of Pale Walnut and Beachcombe Grey.

Is there a particular demographic of homeowners decorators should consider when suggesting Heritage?

Dulux Heritage is aimed at homeowners who want stylish interiors for the real homes they live in. Whether it's a small modern apartment, 30s semi or Georgian mansion, this range has been designed to make all walls look beautiful, feel gorgeous and last for years.

Has there been an appetite for a more premium range from professional decorators?

Yes, we've seen a real rise in the use of more premium finishes in recent years. As a decorator myself, I know from experience that professional decorators are as selective as their customers when it comes to paint and colours. We want to offer the perfect combination of a well considered and beautiful colour range but in a paint that is a pleasure to apply, that's something Heritage provides.

Which rooms of the home should decorators recommended using Heritage in?

What's great about Heritage, is that it's perfect for any room a customer is proud of and spends time. I'd suggest areas like entrance halls, living rooms, dining rooms and bedrooms are the ideal places to consider using Heritage.

MIRKA

**180°
flexibility**



reddot design award
best of the best 2018

NEW! DUAL
VOLTAGE

Mirka® LEROS

Pure Innovation

Low weight. Dust-free sanding. 5mm orbit. MyMirka app.

For further information or to arrange a demonstration,
please contact Customer Services on 01908 866100

www.mirka.co.uk

LESS THAN 3.5 KG.

180° FLEXIBILITY.

100% COMFORT.



Matt for Bradite's One Can

Customer demand has led to Bradite expanding its product range to include a matt version of One Can.

Feedback from the professional consumer is probably the most valuable commodity when developing new decorating products. These are the people who can tell you whether it really does do what it promises. They are also the people who can inspire the creation of future products.

Well, this was exactly how specialist coatings manufacturer, Bradite learned that professional decorators and merchants, also wanted the choice of a matt finish in their product, One Can.

One Can, originally available in an eggshell finish, combines primer, undercoat and topcoat all in one. Its appeal to the user is that it can be applied to perform any of those specific roles, or used as all three, in just one can.

It quickly found favour and professional painters were soon asking merchants if there was a matt version available. They wanted a hard-wearing, flat finish whilst maintaining all the advantages of the eggshell One Can.

Same great products, with a more eco-friendly solution.



**WIN
THE
WAR
ON WASTE
PLASTICS**



38% EXTRA The foil sealant range with 400ml for the same average price of a 290ml cartridge

Better for the planet - Better on your pocket!

- 96% Less waste & less than 1% plastic compared with standard cartridges
- Superb performance and product range

For more info call: 01302 770 234
or email: sales@tembediy.com



HIPPO®

Sealants Fillers
Adhesives

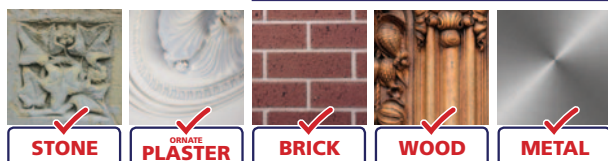
www.tembediy.com  

Environmentally Safer*
FORMULATION

Peelaway®

The Original Poultice Paint Removal System
The safer, more efficient way to remove almost any type of paint or varnish in one easy application from a variety of substrates.

✓ Architecturally Specified



Paint Removal System 1
REMOVES UP TO 32 COATS
OF PAINT AND VARNISH
containing Oil, Lead
Polyurethane or water.

Suitable for Wood, Brick, Stone,
Concrete, Marble, Decorative
Plaster, Cornices and
Plaster walls.
Also removes painted
wall paper.
Water-based Alkaline
formulation.

Paint Removal System 7
REMOVES UP TO 20 COATS
OF PAINT AND VARNISH
of Architectural, Domestic and
Industrial Coatings.

No dangerous fumes or
toxic particles.
Modern alternative for
Peelaway® 1.
Does not require neutralising
on application.

Barrettine
TRUSTED BY THE PROFESSIONALS

St. Ivel Way, Warmley, Bristol BS30 8TY.
T: 0117 960 0060 E: sales@barrettine.co.uk
www.barrettinePro.co.uk

* Environmental claim compares to shot blasting, abrasion and heat guns
where toxic paint particles can be released into the environment.



This has now been developed by the Bradite team and the matt version will be on the shelves from March.

One of the key features of One Can is that it is quick drying. The formula allows it to be touch dry in 30 minutes and re-coatable in one hour so that three coats can be applied in a single day.

One Can is water-based so is virtually odourless, an important consideration for some specific jobs such as those close to food preparation or storage; or in a hospital, care home or residential property. The paint also has stain locking characteristics if you are having to overcoat a surface where you need to obliterate blemishes including water damage, nicotine, rust or resin bleed.

Used as a primer, One Can lets you tackle with confidence a range of difficult-to-paint surfaces both porous and non-porous - these include MDF, plywood, soft and hard woods including redwoods and sapele; also, ceramic tiles, glass, powder-coated surfaces, stainless and galvanised steel, building plastics including uPVC, Formica and melamine, other plastics and many plastisols.

This smart paint works both as an adhesion primer and sealer to allow overcoating in a short space of time, or it can even be force dried when used in manufacturing. It acts as an anti-corrosive protection and can be applied direct to metals both ferrous and nonferrous. Three coats of One Can Matt will give full anti-corrosive protection on bare steel.

The formulation of the new product includes enhancing the flow out and this allows an even application as an undercoat providing a smooth, uniform surface. If used as a finish coat, the decorator can be confident that it will provide a tough, washable surface and you can easily accommodate client colour scheme wishes because there are thousands of BS, RAL and NCS colours available.

The choice of application is also straightforward, using brush, roller or spray.

Put simply, this is a high performance product, available in either Matt or Eggshell finish, that means less paint, less time and less waste and that all adds up to one thing, more profit.





Seamless



Beamless



Flawless

"In my honest opinion it's a market leader. I've trialled many brushes and I have to say this trumps them all."

Decorators Forum testing panel member

Identifying Damp & Condensation -

How can paint help?



Coo-Var gives an insight to how its specialist coatings work and where they should be used.

Damp and condensation are common problems in a wide range of properties; Housing Associations, Leisure Centers, Schools, Industrial Premises and Domestic Properties all suffer to some extent. There are several methods to control the problems, but ideally one needs to discover the source of the problem. Then it can be treated using the correct control method - let's say an Anti-Damp or Anti-Condensation coating in a 'belt and braces' approach to the problem. We hope the information given will help understand the issues involved.

Damp and Staining

Help prevent damp and mould in cellars or areas prone to residual moisture problems using an Anti-Damp paint. The product is based on low odour oil based resins that

restrict water movement. The dry film contains an additive which, when wet, reacts to form a water screen within the dry paint film. In addition, unsightly mould is deterred by a film protecting biocide. Obviously a paint film will not solve the original cause of dampness, be it a leak or other water ingress, but it will solve many of the associated problems. It is available in white and will dry with a slight "finish"; it is not completely "Matt". Ideal on cellars, outbuildings, low rooms, any areas prone to dampness. If required it can be subsequently over-coated with both water based and solvent based systems.

Condensation

Condensation is often accompanied by mould growth, black or green in colour, with

no real sign of any dampness within the wall. Condensation often occurs around windows, especially single glazed where the temperature drop is large. Cold spots often give rings or patches of mould often caused by an isolated defect in solid walls.

Anti-Condensation paint is an insulation type coating which helps reduce the effects of the cause of condensation; it keeps the wall slightly warmer and hence helps prevent condensation forming by reducing the cold wall effect. These coatings generally have a micro texture and can be over coated with decorative paint which will not affect their anti-condensation properties. The micro texture, which is barely visible, means you cannot repair the wall in patches; you must coat either the entire wall or whole sections



BEAUTIFUL LASTING COLOURS

EXTERIOR WOOD CARE
FOR THE WHOLE HOUSE



DEMIDEKK users enjoy painting.
But not too often.



CONTACT YOUR LOCAL DEALER FOR MORE INFORMATION

of wall. This prevents you simply moving the problem to another patch, for example, on an external wall.

Coo-Var would always recommend analysis to discover the root cause of the problem, but, both Anti-Damp and Anti-Condensation paints are a useful tool to have in the battle against dampness and condensation. Even in these modern days where 'one coat of one paint does everything', they should continue to be an integral part of every decorator's emergency kit.



For more information or technical advice on our products please contact the Technical hotline on 01482

328053 or email info@coo-var.co.uk. To download more information, visit the Coo-Var Website at www.coo-var.co.uk.



Don't *just* decorate... **BEDEC-ORATE!**

Innovators in Water-based Technology

Bedec Products Ltd., Units 1 & 2 Poplars Farm, Aythorpe Roding, Dunmow, Essex. CM6 1RY

Tel: +44 (0) 1279 876 657

Email: info@bedec.co.uk

www.[bedec.co.uk](http://www.bedec.co.uk)

No more *dangerous kickbacks*



Increase safety when drilling, screwdriving and sawing with the new KickbackStop technology from Festool

Festool is well known for offering tools which enhance health and safety at work. This certainly the case for the new TSC 55 K cordless plunge-cut saw and for the new QUADRIVE TPC 18/4 cordless percussion drill and TDC 18/4 cordless drill all with the intelligent KickbackStop, which stops the motor within a split second.

Most applicable to the decorating trade are the new QUADRIVE cordless drills. The two new cordless drills are powerful, versatile

and, with four speeds, equipped to take on any application. Their switching concept provides the right torque and speed for any application. They are extremely tough and, furthermore, with the brushless EC-TEC motor technology, they are extremely resilient and durable. The KickbackStop prevents your wrist from twisting dangerously. A sensor in the electronics continuously monitors the speed in the rotary movement and the twist angle. In the event that the tool jams, the

machine switches off in critical situations. The new KickbackStop technology therefore reduces the risk that your wrist will be twisted if the drill suddenly jams.

The new TSC 55 K circular saws and the new QUADRIVE TPC 18/4 and TDC 18/4 cordless drills are available from specialist retailers from April 2021.

You can find additional information and animated videos at www.festool.co.uk/kickbackstop



Brewers
DECORATOR CENTRES

We're here to help you grow your business.

With all the major brands under one roof, combined with our knowledge and ability to deliver to site, our proposition for you is second to none.

Brewers has been in the business of supporting the trade decorator for over 115 years. We're growing with over 180 stores nationwide and we want your business to grow with us.

Our Area Development Managers (ADMs) are here to help you succeed, whether its with product

advice and supply, or fast project specification with our own Specmaker software.

Below is a list of all our ADMs showing the regional area and the specific postcodes they cover*.

Call your local ADM and find out what they can do for you.

*Indicates postcode area that is shared



Tara Heritage
CENTRAL – 07817 074777
GL, SN



Andy Mugglestone
CENTRAL – 07980 993327
RG*, OX, SL



Harry Stone
CENTRAL – 07876 791500
HP, LU, MK, NN, OX* SG*



Lauren Gordon
EAST – 07970 228968
CB, LN, NG*, PE



Graham Haylock
EAST – 07866 781875
CM, CO, SG*, SS



Robert Smith
EAST – 07970 228966
IP, NR



Faye Addison
LONDON – 07966 322346
NW, SW*, UB, W, WC



Danny Chappell
LONDON – 07970 228945
BR, CR, DA*, SE



Scott Collis
LONDON – 07970 228974
E, EC, IG, N, RM



John Drake
LONDON – 07970 228926
KT, SM, SW*, TW



Sara Parker
LONDON – 07876 791501
AL, EN, HA, WD



Gary Braidwood
MIDLANDS – 07891 040846
DE, NG, ST, SY*, TF



Tom Cave
MIDLANDS – 07976 830708
B, CV, DY, HR, LE, NN*, WR, WS, WV



Chris Beaumont
NORTH – 07929 378586
CH, CW, LL, SY, WA



Garry Burlinson
NORTH – 07881 470828
DH, DL, SR*, TS, YO

Over 180 stores nationwide



ABINGDON ALDERSHOT ALTON ALNWICK ANDOVER ASHFORD AYLESBURY BANBURY BANGOR BARKING BARNES BARNSTAPLE BASILDON BASINGSTOKE BATH BEDFORD BEXHILL BICESTER BIRKENHEAD BOURNEMOUTH BRIGHTON BRISTOL BRIXHAM BURGESS HILL BURTON-UPON-TRENT BURY ST EDMUNDS CAMBRIDGE CANNOCK CANTERBURY CARDIFF CHELMSFORD CHELTENHAM CHESTER CHICHESTER CHRISTCHURCH COLCHESTER CORBY CRAWLEY DARLINGTON DERBY DEREHAM DORCHESTER DOVER DUNSTABLE DURHAM EASTBOURNE EXETER FAREHAM FARNBOROUGH FARNHAM FOLKESTONE FRINTON-ON-SEA GILLINGHAM GLOUCESTER GORING-BY-SEA GRANTHAM	GREAT YARMOUTH GREENHITHE GUILDFORD HAILSHAM HARLOW HASLEMERE HASTINGS HAYWARDS HEATH HORSHAM HOVE HULL IPSWICH KIDDERMINSTER KING'S LYNN LEEDS LEICESTER LEATHERHEAD LIVERPOOL LOUGHBOROUGH LOWESTOFT LYMINGTON MAIDENHEAD MAIDSTONE MARGATE MIDDLESBROUGH MILTON KEYNES MINWORTH MORECAMBE MORPETH NEUBURY NEWCASTLE NEWPORT NEWTON ABBOT NORTHAMPTON NORWICH NOTTINGHAM NUNEATON OXFORD PETERBOROUGH PETERSFIELD PLYMOUTH POOLE PORTSMOUTH READING REDHILL RINGWOOD ST ALBANS ST AUGUSTINE ST NEOTS SAFFRON WALDEN SALISBURY SEAFORD SEVENOAKS SITTINGBOURNE SOUTHAMPTON STEVENAGE	STOCKPORT STOKE-ON-TRENT STOURBRIDGE STRATFORD-UPON-AVON SUDBURY SUNDERLAND SWINDON TAUNTON THETFORD TONBRIDGE TORQUAY TROWBRIDGE TUNBRIDGE WELLS UCKFIELD WALSALL WARE WEYMOUTH WINCHESTER WINDSOR WISBECH WOKING WOKINGHAM WORCESTER
LONDON AREA (within the M25)		
ALDGATE BATTERSEA BOW BRIXTON BROMLEY CHISWICK COLINDALE CROYDON EDGWARE ROAD ENFIELD HAMMERSMITH HAMPSTEAD GS HILLINGDON ISLINGTON LEE MORDEN PECKHAM PUTNEY ROMFORD STAINES SURBITON SUTTON THORNTON HEATH TWICKENHAM VICTORIA WATFORD WELLING WEYBRIDGE WOOLWICH		

Visit brewers.co.uk for details



Stuart Clegg
NORTH – 07855 132954
DN, HU, LS, S, WF



Christopher Roberts
NORTH – 07772 912076
BB, BD, BL, HD, HG, HX, M, OL, SK



Steven Traynor
NORTH – 07816 599682
CA, FY, L, LA, PR, WN



Alan Watkins
NORTH – 07714 228849
NE, TD



Jon Flower
SOUTH – 07970 228930
GU*, PO, RH*, BN*



James Heaney
SOUTH – 07970 228917
GU*, KT*, RG*, RH*



Geoff Pardon
SOUTH – 07970 228938
DT*, RG*, SO*, SP



Tony Wilkin
SOUTH – 07970 228937
BR*, SO*



Graham Keen
SOUTH – 07976 412628
DT*, RG*, SO*, SP



Andrew Dolby
S. EAST – 07970 228979
TN*, DA*, ME, CT



Tony Guarino
S. EAST – 07970 228919
BN, RH*, TN*



David Cooper
S. WEST – 07970 228934
EX*, PL, TQ, TR



Paul Shortland
S. WEST – 07814 861016
BA*, DT, EX*, TA



Tony Timbrell
S. WEST – 07971 591465
BA*, BS

Mid / South Wales
CF, LD, NP, SA
COMING
APRIL 2021

Dulux Trade introduces 99.9% VOC-free 1d Airsure range



Dulux Trade is strengthening its commitment to reducing the environmental impact of paint with the launch of a new product range that is 99.9% free of volatile organic compounds (VOCs).

The Airsure range will initially include new Airsure Diamond Matt and Airsure Vinyl Matt - offering the quality, performance and coverage that decorators need, but with a lower or equal carbon footprint compared to the standard formulations.

Paul Murgett, AkzoNobel Sustainability Manager, comments: "With the UK population spending around 80-90% of their time inside buildings, and up to 60% of their time in their homes, indoor air quality is an important consideration for us all.

"VOCs evaporate away from paint into the air even at room temperature. Once in the air and exposed to sunlight, they react with nitrogen oxides already present to create pollution, which in high concentrations can affect health.

"Although the pollution impact of the VOCs from paint is very small, less than 2% of the

total amount of VOCs emitted, we know they contribute to indoor air pollution, and that is why we're pioneering new ways to minimise the amounts emitted by our paints."

Airsure Diamond Matt is available in the full Dulux Trade tinted colour range and has the same scuff, scrub and stain resistant technology as Diamond Matt. The Airsure Vinyl Matt is suitable for all normal interior walls and ceilings, giving the excellent opacity, coverage and finish decorators expect from Vinyl Matt.

Both the products in the range are BREEAM and LEED compliant, helping decorators working on commercial projects to meet the most stringent sustainability objectives.

Last year AkzoNobel unveiled Dulux Trade Evolve Matt - the first paint offering from a major UK brand to be made using 35% recycled paint content. Dulux Trade also

expanded its range of durable, water-based paints by introducing Dulux Trade Diamond Satinwood in more than 14,000 different colours, so decorators can choose a more sustainable trim product in any colour the customer wants.

Paul adds: "We're constantly using the latest research and technology to innovate, and more products will be added to expand the Airsure range in 2021. In the coming months, we will also be supplementing the new range with educational tools that will help decorators talk to their clients about making the transition to more sustainable products, giving them another way to demonstrate why a customer should choose them for their project."

To find out more please visit:
<https://www.duluxtradepaintexpert.co.uk/airsure>.

For 25 years only the best have been selected

Why you should join Dulux Select Decorators:



Reassurance and peace of mind with a two year guarantee



Product discount vouchers



Use of the Dulux Select Decorators logo



Subsidised rates at Dulux Academy



Awards and recognition

And many more reasons to become an accredited member...

Call **0333 222 7022** for more information or visit **duluxtrade.co.uk** to find out more



Aaron Davidson,
Davidson Decorators

AkzoNobel



A new era for trim

David Baines, technical specification manager at PPG, explores the issues professional painters and decorators face on trim surfaces and how Johnstone's Trade Aqua Guard has been designed to help tackle them.

For professional painters and decorators, as well as end customers, the appearance and quality of paintwork is highly important. Finishes need to look good and stand the test of time; however, when it comes to areas such as doors, window ledges and skirting boards, the painted surfaces are susceptible to damage through everyday use. A painter could do a fantastic job that looks great at first, but if the finish doesn't last, their reputation could be at risk, especially if the redecoration needs to be carried out sooner than their customers would like.

Regular contact with surfaces within the home is unavoidable but it brings a challenge in terms of keeping surfaces looking fresh. This is a common issue with water based paints but, to resolve this and help professional decorators protect their reputation, Johnstone's Trade has launched Aqua Guard – a new durable, water based satin paint that has been specifically designed to protect interior wood and metal

surfaces against scratches and general wear and tear.

Protection against natural oils

Trim surfaces can be impacted by natural oils from our hands, as well as typical wear and tear. We naturally leave residue on surfaces as our hands contain and release enzymes, often known as hand fats. No matter how often we wash our hands, this residue is left behind on surfaces – most commonly on kitchen units, skirting boards, banisters and around door handles. This can soften the coating on the surface, causing the paint to weaken slightly, particularly when it comes to water based formulations, as the oils can react with the paint and break down its protective layers, leaving the surface open to tarnishing.

In response to this issue, Johnstone's Trade has developed Aqua Guard with Surface Protection technology, which forms a protective barrier. Where professional

painters and decorators once had to rely on solvent based paints to do this, they can now reap the benefits of a water based paint – including low odour, quick drying time and ease of application – while being confident that the paint will provide the ultimate defence against every day wear and tear.

We recently asked professional painters and decorators to put Johnstone's Trade Aqua Guard to the test and, commenting on how the paint will help his business, Chris Green said: "The application and finish you get from using Aqua Guard is everything we as decorators are looking for. My business is based on providing a quality, long-lasting finish, and Aqua Guard Durable Water Based Satin enables me to do just that. It's the best trim paint I've ever used."

No more visible brush marks

Another challenge professional painters and decorators are often faced with is the visible brush marks that can come with other water



YOUR TIME HAS NEVER BEEN MORE IMPORTANT TO US.

- STARTS SETTING
IN 20 MINUTES
- OVER-PAINTABLE
IN 3 HOURS




- Create Beautiful Surfaces -
www.filltite.co.uk




based paints. When creating the perfect trim finish, brush marks can easily spoil the whole look, making the job appear less professional.

Johnstone's Trade Aqua Guard has been formulated to prevent this from happening, allowing for smooth application with an effective, high quality finish. After trying the paint for the first time, decorator Nick Torrano Harling said: "Aqua Guard applies and leaves a finish just like an oil based product, but with all the benefits of water based. It will also stay whiter for longer, which will be a major benefit for my customers. I would happily recommend Aqua Guard Durable




Surface Protection technology

Standard Interior Trim



Wear and tear as a result of grease, dirt and scratches

Johnstone's Trade Aqua Guard with Surface Protection technology



Ultimate defence: Surface Protection technology works as a guard

Scratch resistant and defends against wear and tear

Johnstone's Trade Aqua Guard is our most durable Water Based Satin paint for interior wood and metal. Brand new Surface Protection technology provides the ultimate defence against scratches, wear and tear and greasy finger marks. The innovative technology will not soften or become damaged with the impact of everyday wear and tear. Therefore, providing a long-lasting finish for all interior woodwork including skirting boards, door frames and windowsills. It's not just about durability though, Johnstone's Trade Aqua Guard Water Based Satin also has advanced application qualities, excellent covering power and long-lasting whiteness.

Johnstone's Trade Aqua Guard; ready for everyday wear and tear.

Water Based Satin to my customers and fellow decorators due to the superior coverage and overall finish."

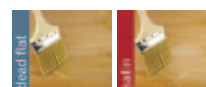
Johnstone's Trade Aqua Guard is available in all 16,000 shades from the PPG Voice of Colour palette.



the varnish experts

exterior wood varnish

the only exterior wood varnish available in a dead flat finish



POLYVINE

find us in store or online at polyvine.com

**Got to have sharp
paint lines?**

Frog It.™

When it's time to tape,
trust the brand that pros
rate #1 for sharp lines
with no paint bleed.



SAVE TIME & MONEY

AND GET PROFESSIONAL RESULTS!

Visit FrogTape.co.uk

Easy Stripping

PeelTec's paint removal technology, which is 100% methyl Chloride free, removes paint in minutes, and it won't damage the base material or the user.



PaintTec reckons it has saved hours and hours of labour for painters and decorators in the industry as it can remove layers and layers of paint in minutes, saving stripping and dipping, sandblasting and even dismantling objects like doors to get the job done. PeelTec, one of the products in the range, is ideal for work on heritage listed buildings, like the project featured here – an old Victorian building being upgraded by Kevin Haughey of Kevin Haughey Painting and Decorating. One aspect of the project, an old beautiful door needed something to remove decades of paint. Initially, the thinking was to take the

door off, sandblast then dip - hours of labour and a two man job before Peel Tec was introduced. The company said it took two hours at most, a job that would have taken a whole day and delayed the job. Peel Tec was easy to use, cost efficient and safe. Taking the door back to it's natural state without damaging the aged wood, it allowed



this door to once again be the crown jewel of this home.

ARRIVING SOON ON PLATFORM 1 & 2.

The NEW Werner Adjustable PRO Platform.



Can be configured
to 10 different
height positions.

The NEW Werner Linking PRO Platform.



Connects up to
four linking platforms
together for a continuous
non-slip work surface.

For more information about Werner access solutions
visit wernerco.co.uk/proplatforms



Stripping
varnish
off posts
with
PeelTec



Kevin Haughey and team were also commissioned in same house to fix or repaint an old Victorian bath. 150 years old, hadn't been used in 20 years Had roughly a two inch seal of grime. Another product in the range, Multisolve, was used. This powerful non- aggressive cleaner and degreaser has an array of benefits - removing old sealants, silicone and adhesive and removing grime in this case. This was sprayed on, so easy to use like PeelTec and took just minutes to remove the embedded grime and dirt and didn't destroy the original enamel!

Available now at Crown Decorating Centres.



CLIP



SNAP

DISPOSE



**TAKE NO RISKS, EASILY SNAP TO
STAY SHARP!**

*For enhanced safety,
use with Axus Decor's
S-Fibre cut-resistant gloves*



#olfauk | olfauk.com



Permanent Wood Restoration Products



- **LiquidWood[®]**
Strengthens
- **WoodEpox[®]**
Fills and Rebuilds

- The premier and sustainable repair solutions for deteriorated wood.
- Easy to apply, shape, and work like wood.
- Virtually no VOCs.
- Results proven by decades of success.
- Superior structural and aesthetic products ideal for use on listed applications.
- Trusted and preferred by professionals and DIY's alike.

Decorating solutions

from Axus Decor

Dec-Patch Filler – Everyday Repair

One of Axus Decor's top fillers, Dec-Patch, can be relied upon to repair substrate damage up to 2cm deep, including holes, cracks and chases in walls and ceilings. There are fillers on the market that will go beyond this, some with no depth limitation, but Dec-Patch's advantage lies in its ease of application.

The powder mixes easily with water to a paste that's enjoyable to apply; it grabs onto the substrate without dropping and forms a firm bond as it dries. After about an hour, you can sand the hardened filler with little effort, but keep in mind that heavy over-filling is not required as Dec-Patch does not shrink like other fillers.

Dec-Patch's formula contains generous amounts of marble dust and resin, leading to a fine-grain finish that is both long-lasting and smooth enough to paint without the need for any other product.

Dec-Patch is suitable for application onto plaster, plasterboard, old painted surfaces, other fillers, cement, concrete, and many other substrates. Once overpainted with two coats of high-quality emulsion, it is unnoticeable.

For information on your nearest stockist, go to www.axusdecor.com/distributors



Brewers *brief*

Masonry Solutions – Brewers has it covered

Solutions to common, and not so common, masonry problems.

Here are just three typical examples of how Brewers can help you get the very best results.

Cracks

Small cracks in render can let in moisture which then freezes and expands, resulting in larger cracks and potentially costly and unsightly repairs. To combat small cracks in render, Brewers recommends a flexible masonry coating such as Bedec Extra-Flex Masonry paint which allows for movement.

Friable/Dusty

Friable, dusty render can seriously undermine any top coat, causing a loss of adhesion and ultimately failure. Brewers recommends first using a coating such as Sandtex Trade Stabilising Solution to stabilise the surface before painting.

Algae/Lichen

Algae and lichen give an unsightly appearance to render which over painting alone will not cure. Brewers recommends an anti-fungal product such as Albany Fungicidal Wash to prevent and eradicate the growth of algae and lichen from most masonry surfaces.

The full range of masonry products can be found online at www.brewers.co.uk. If you need further advice ask in-store or visit www.brewers.co.uk/know-how/problem-solver. For the latest in decorating solutions, join Brewers on Facebook or Instagram @brewerspains

masq[®]

Professional masking solutions

Helping you choose the right tape for the job. Saving time, money and giving you a perfect finish



Stress Less Just masq[®]

ROTA! kana masq prep by **Ciret Ltd.**

www.ciret.co.uk

sales@ciret.co.uk

+44 (0) 2392 457450

On test: Cordless Drills

Surprisingly the first cordless drill was on the market in 196. Black & Decker designed and manufactured the first cordless power tool. This drill was powered by a rechargeable nickel cadmium NiCad battery, we have tried to find the cost of this tool but seems its lost in the mists of time.

All that's very well but we have assembled six new cordless drills of varying prices and this what we found.

Makita DH457D

Price	£130 (Approx)
Net Weight	1.7Kg
Overall Length	246mm
Rated Voltage	18v
No Load Speed High	0 - 1,400
No Load Speed Low	0 - 400
Hammer Drill Blows High	0 - 21,000
Hammer Drill Blows Low	0 - 6,000
Drilling Capacities Concrete	13mm
Drilling Capacities Steel	13mm
Drilling Capacities Wood	36mm
Wood Screw	6 X 75mm

Supplied with two 1.5 Ah batteries its nearly identical to its stable mate the DHP453 and has almost the same capabilities. There is a big difference, however, when you look in the case and there you find many wood drill bits, high speed drill bits and masonry bits and a countersink bit. Along with a screw bit holder there are screwdriver bits, Allen bits and four nut driver sockets. All you would want to drill, screw, tighten and loosen.



Makita DHP453

Price	£160 (Approx)
Net Weight	1.7Kg
Overall Length	232mm
Rated Voltage	18v
No Load Speed High	0 - 1,300
No Load Speed Low	0 - 400
Hammer Drill Blows High	0 - 19,500
Hammer Drill Blows Low	0 - 6,000
Drilling Capacities Concrete	13mm
Drilling Capacities Steel	13mm
Drilling Capacities Wood	36mm
Wood Screw	6 X 75mm

Supplied in a blown plastic case with two batteries, charger and a double ended screwdriver piece not able to clip this onto the drill casing. Drill has a reversible motor and can drill, hammer drill and drive in screws. Casing has rubberised grips where your hands would naturally go, handle and the back of the motor casing, on top of the casing is the two speed switch. On the front of the casing are two swivel collars to set the drill, drill hammer etc.

Macallister MSDD18-LI-2

Price	44.99 from Screwfix
Net Weight	1.4Kg
Rated Voltage	18v
Chuck Capacity	10mm
No Load Speed High	0 - 1,450
No Load Speed Low	0 - 400
Drilling Capacities Concrete	10mm
Drilling Capacities Steel	10mm
Drilling Capacities Wood	25mm

Macallister's MSDD18 -LI-2 feels a lot better quality than its low price tag would suggest. A two speed, non hammer, reversible drill represents very high value. Sporting a torque adjustment ring for ensuring you aren't over tightening. The drill handle and casing has strategically placed rubberised coatings ensuring the user's hands won't slip. Supplied in a soft fabric case with a spare battery and charger.





Discover our interactive workshops today

We know you have had to adapt your working practices during this difficult time and we at Dulux Academy have been no different. That's why we've created Dulux Academy Live, a series of interactive and engaging online workshops delivered by our team of leading industry experts. These workshops are limited in numbers to ensure you have the best possible learning experience from the Dulux Academy and from your peers.

Over 2000 people have already benefited from our **FREE** workshops – here's what some had to say.



"The Airless v HVLP workshop helped me learn about the pros and cons of each machine and I really valued being able to ask questions and learn from others in the workshop. Well worth doing and has given me more confidence."

– Martin Cole

"I've been wanting to learn more about colour but never found the time. These short workshops have been great for picking up tips and tricks which I've been able to use with my customers and have left me wanting to learn and do more in the future." – Les Copestake

Sign up today at:

duluxacademy.co.uk

AkzoNobel

Clarke International CON18LiC

Price	£119.98. Machine Mart.
Net Weight	1.5Kg
Rated Voltage	18v (2Ah)
Chuck Capacity	13mm
No Load Speed High	0 - 1,500
No Load Speed Low	0 - 420
Drilling Capacities Concrete	8mm
Drilling Capacities Steel	10mm
Drilling Capacities Wood	25mm

Striking in its very yellow livery with black rubberised coatings. The drill has a two speed gearbox, a belt hook, a collar near the chuck can change the drill to hammer drill, drill and screw driving and the other collar sets the torque. A lamp will illuminate the tip of the drill bit when drilling etc.



Macallister MSCD18-LI-2

Price	£49.98 from Screwfix
Net Weight	1.5Kg
Rated Voltage	18v
Chuck Capacity	13mm
No Load Speed High	0 - 1,600
No Load Speed Low	0 - 420
Drilling Capacities Concrete	13mm
Drilling Capacities Steel	10mm
Drilling Capacities Wood	30mm

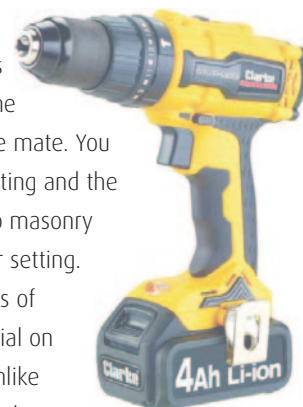
The 8_LI-2 differs slightly from its stable mate, having a 13mm chuck and sporting hammer drill and driver capabilities. The drill sports a two-speed gearbox, the motor is reversible and there are rubberised coatings where the user's hands would naturally go. There's just the one 18 volt 1.5 Ah battery and a light that shines just where the tip of the drill bit would be. Same low cost and high quality.



Clarke International CON180Li

Price	£154.80
Net Weight	1.5Kg
Rated Voltage	18v (4Ah)
Chuck Capacity	13mm
No Load Speed High	0 - 1,500
No Load Speed Low	0 - 400
Drilling Capacities Concrete	8mm
Drilling Capacities Steel	10mm
Drilling Capacities Wood	25mm

Except for the 4Ah batteries this drill very much the same as its stable mate. You get 21 torque setting and the ability to drill into masonry with the hammer setting. There are coatings of rubber like material on the handle but unlike other drills not at the rear of the motorcasing. The blown carrying case contains two batteries and a charger.



bromboroughpaints

Wallcovering & Paint Specialists. Est. 1948

We've got the North West covered!

- All major brands available
- Colour mixing service
- Extensive selection of wallcoverings
- Wide range of decorating tools & materials
- Competitive prices
- Friendly, expert advice

For more information call: 0151 334 1237
or visit www.bromboroughpaints.co.uk



Carlisle

Kendal

Lancaster

Padiham

Trafford Park

Cheadle Hulme

Stoke

Shrewsbury

Northwich

Chester

Frodsham

Liverpool

Wigan

Preston

Birkenhead

Abergele

Bromborough

Visit our online store

Tradelst.co.uk
1st FOR DECORATING SUPPLIES



PROTECT YOUR WORKSPACE AND THE ENVIRONMENT

A Heavy Duty Solution to a Heavy Duty Problem

Masking bricks, concrete and blockwork when spraying plaster requires strong and high performing tapes. Our new spray plaster range has you covered.

**ENVIRONMENTALLY FRIENDLY* <
BONDS TO ROUGH SURFACES <
USE IN COLD AND WET CONDITIONS <**

*PE Plastering Tape can be recycled



tesa.UK



tesaUK



tesaUK



tesaUK_tape tesa.co.uk/spraywithtesa



by David Stokes

On test:

Renault Zoe electric van

Nothing prepared me for my first experience driving Renault's small pure electric van. The acceleration was electrifying and almost small sports car performance. The heavy 50kWh battery though stops you going through the bends with aplomb. To stop frightening pedestrians in those areas shared by vehicles and those walking the van makes a noise when travelling under 20mph. sounds a little like the mark one

'enterprise' on Star Trek.

Based on the Zoe hatchback and looks very much the same from the outside. Inside however, all is different, the rear cargo space is accessible from the hatch and the two rear side doors. Along the sides are a tubular shelf supports about 18 inches above the van floor where a removable shelf can be clipped upon for carrying smaller and lighter items.

The door cards remain but the electric widow switches have been removed and the blacked-out door windows are fixed.

The flat loading area is 1,2 metres square, the floor is carpeted floor extending from the bulkhead behind the seats to the tailgate. There are four tie-down loops to lash down any load likely to cause damage underway. Additional space is where the Zoe's cars foot wells would be, good for hiding expensive

NEW
MATT FINISH



ALL-SURFACE PRIME+ FINISH

- ◆ All-purpose water-based primer and finish in ONE CAN.
- ◆ Blocks, seals and locks stains. ◆ Anti-corrosive on all metals.
- ◆ Tintable to full BS and RAL colours. ◆ Interior/Exterior durability.
- ◆ Sticks to all metals, woods & building plastics.



For more information, please email:
enquiries@bradite.com

www.bradite.com  [@Braditepaints](https://twitter.com/Braditepaints)



TEARS

THROUGH LAYERS OF PAINT & VARNISH

'The brand you can trust'



THE AWARD WINNING
FORMULA THAT'S

SUPER FAST

✓ EASY TO APPLY

✓ NON-DRIP GEL FORMULA

✓ REMOVES METALISED PAINTS

SIZES: 250ml - 4 Litres

For all enquiries, contact our sales office:

email: sales@barrettine.co.uk

www.barrettinePro.co.uk

Gold winner of the DIY Week
Decorating Product of the Year 2011.

Barrettine
TRUSTED BY THE PROFESSIONALS



items like power tools.

I didn't like the rear door catches, they are fashionably in the trailing edge of the door window and I found them awkward and fiddly to use and the handle felt cheap and insubstantial. Other than that the van was well put together.

I was a little flummoxed when first sitting in the driver's seat. It's all very different. You press the starter button and you are met with, silence! The dash lights light up giving you an array of information, battery state percentage being one of the most important. In the Business + version there's the rapid charger fitted at £700 more. With this the van can be charged to 80% in an hour, from a 13 amp household plug though a full charge will take a lot longer.

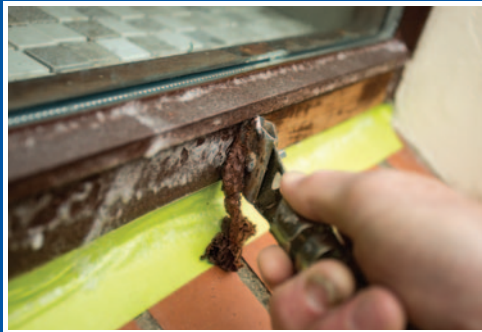
We all know that electric vehicles are expensive and the Zoe is no exception, prices start at around £28,000 but the Zoe qualifies for the government plug in van grant. Depending on the level of Zoe bought there could be up to £6,800 reduction or so. That would bring the price down to around the £20,000 mark.

To charge the Zoe you are provided with two sets of charging cables, one for home charging and the other for charging at BP stations or with the home charger. With electric vehicles there is always the thorny question of range Renault claim 245 miles but this is subject to ambient temperature, payload, where you operate the van for instance if you're in Norfolk it'll go further than if it's in North Wales. Also, if there is a front seat passenger. I did find a week's exposure to this van not quite enough to learn all its foibles but it was fun all the same.

Renault has chosen BP Chargemaster as their preferred partner, through which they are able to take advantage of a government grant of up to 75% support. Renault offer our customers a FREE^ 7kW Home charger, fully installed and able to charge a ZOE Van with Z.E. 50 battery from flat-to-full in 9-10 hours.

Peel Tec®

Paint just simply peels away!



Peel Tec is simply brilliant
when removing old varnish and wood stains.



Enormously versatile, Peel Tec works
on almost all materials with the same efficiency!



Reduces labour considerably,
even when removing multiple layers of paint.

FROM THE CREATORS OF **CT1®**



CROWN
DECORATING CENTRES

SPECIAL OFFER!

Buy 2 Cartridges of CT1
and get 1 Can of Peel Tec
FREE OF CHARGE!

OFFER ENDS APRIL 2021

Coats against Sars



Andura has published details of tests that the company say shows that its Titanium Anti-Microbial range reduces SARS COV 2 (the virus that causes Covid-19) on painted surfaces. The figures show a reduction of 45.05% after 6 hours and 68.38% after 24 hours when compared to a control painted surface, when tested to ISO21702:2019. Andura's Titanium Anti-Microbial range has been developed to significantly reduce the growth of harmful bacteria. It offers long lasting effective protection, say Andura, against SARS COV 2, bacteria, fungi and moulds. It is also proven to reduce MRSA – a type of bacteria that's resistant to several widely used antibiotics – by 99.98% and E coli by 99.99%. Said a company spokesperson; "Unlike 'air-purifying' paint, which is activated by sunlight and does not work inside without using a UV lamp, Titanium Anti-Microbial is effective regardless of where it is used. What's more photo-activated anti-microbial paint coatings degrade over time, as the binder agent used gets destroyed by the reactions produced. This is not the case with Titanium Anti-Microbial which retains its outstanding durability whilst protecting surfaces."



Pressing wallpaper

Axus Décor has introduced a Mark Two version of its all in one corner and seam wallpaper press. The new model features a removable, silicone sleeve which goes over the external/seam roller and prevents any damage occurring to the wallpaper underneath. This sleeve is, say Axus, incredibly durable; it can be pressed with force yet restore its shape. It is also easy to clean which makes it suitable for use on multiple projects. The Wallpaper Press Mark Two comes with three functions; a seam roller for pressing down joins, an internal corner roller and an external corner roller. Says Axus "The last two are too often overlooked, but properly pressing the wallpaper against the corners can ensure a longer-lasting bond."



Cooler than the rest

As part of its extensive LXT cordless range, Makita has announced the release of its DCW180Z 18V Cordless Cooler & Warmer Box - ideal for keeping food and drinks cool or warm in any season.

Powered by an 18v LXT battery, this product has two 18V LXT battery ports so you can attach two batteries in series for extended operating times. When the first battery is depleted the unit automatically switches to the second battery. This model can also be powered via 240v mains or with an in-vehicle 12v / 24v AC socket. When set at 5°C (normal fridge temperature) the cooler will run for up to 17 hours with 2x 6.0Ah batteries.

The 18V Cooler & Warmer Box is a versatile unit with a large 20-litre capacity of storage space and as an example, it can hold approximately 30 cans, or 15 x 600ml water bottles. The solution can operate at two warming settings of 55° and 60°, with five cooling settings of -18°, -10°, 0°, 5° and 10°. The unit can run at its coldest setting of -18° for five hours and its warmest setting of 60° for around four hours.

A paint that actively cleans the air

A new coating that can clean the air is now available. Apparently 45 litres has the cleansing effect of a tree.



Graphenstone is confident that its coating products will not only enhance the house and home but will also clean the air. So pure is Graphenstone lime paint (with a base containing lime at 98% purity) that three full 15 litre pots of its Ecosphere Premium used on your walls will absorb as much CO₂ as a tree (as well as Nitrogen Oxide and Sulphur Dioxide). It is, we are told, also the only paint in the UK to contain Graphene – a 21st Century Nobel prize-winning material made from pure inert carbon that results in its paints being strong and wipeable. Ranges

are priced from £4 a litre and available in over 1,000 colours.

Ecosphere meets the Cradle to Cradle Gold Standard, which provides consumers, regulators and industry peers with a clear, visible, and tangible validation of the manufacturers' ongoing commitment to sustainability.

Graphenstone is headed in the UK by Patrick Folkes, the entrepreneur who brought us the first UK fruit smoothie - PJ's – subsequently sold to PepsiCo, "Graphenstone paints have

the unique ability to turn your walls and ceilings into air purifiers. We are also one of the most certified paints on the market with around 20 globally recognised awards'.

The coatings are also fully breathable. This allows moisture to flow through the paint surface, which helps to reduce condensation, mould and mildew, creating a much healthier indoor environment. Graphenstone paints are available in a range of sizes and varieties for all areas and surfaces, for both interior and exterior projects.

Lightweight stagings



Designed to offer strength and durability without weighing tradesmen down, WernerCo has launched its new Lightweight Staging Youngman® Boards. Also referred to as Light Weight Stagings (LWS), the new staging boards provide a safe and uninterrupted working platform for various jobs around the work site including bridging gaps. Designed to be lighter but stronger, the staging boards are made with aluminium box section stiles for added strength and durability, as well as being easy for tradesmen to transport between locations. If required, a full handrail system is available for use in conjunction with the staging boards for added safety and security when working. When used with the handrail system, the staging boards are secured with the inner clamps to minimise the risk of the boards moving when in use. The user can also fit two staging boards side by side, using the clamp to secure both together to create a larger working platform.

FlexiWork Neon Jackets and Fleeces

This workwear from Snickers deliver flexibility and comfort. These lightweight 4-way stretch garments come in a body-mapping design and are made from an Elastane/Polyester fabric with a water-and wind-repellent finish for comfort and durability when you need it most.

As well as being street-smart they are visibly striking with Neon panels and reflective details for enhanced visibility.



Makita expands its XGT '40V' cordless tools

Makita has expanded its high-performance 40Vmax XGT range with the addition of three new tools. The new Rotary Demolition Hammer, 216mm Slide Compound Mitre Saw and 230mm Angle Grinder all feature Makita's brushless motor technology.

The powerful HR005GZ01 40VMax Brushless Rotary Demolition Hammer offers rotary hammer and hammer only operating modes and is compatible with SDS-MAX chisels, drill bits up to 40mm and core bits up to 105mm. It features a variable speed trigger and delivers speeds of up to 500 revolutions per minute (rpm) and up to 2,900 blows per minute (bpm) of hammer action.



Portable power

When there's no power source on site or within reach, the new SYS-PowerStation from Festool will be useful. With 1500 watt-hours, a full 3680 watts of continuous power output and a top power output of up to 11,000 watts, the portable energy storage device delivers a reliable 230-volt mains voltage that lasts. In other words: Used with the Kapex KS 60 sliding compound mitre saw and added mobile dust extractor, you can complete 560 cross-cuts, enough for a parquet floor. With the Planex long-reach sander and connected mobile dust extractor, which are also mains-operated, you could even sand a 200 square-metre surface. It takes 3.5 hours to fully charge the battery.



tesa introduces spray plaster masking range



Following the successful launch of tesa's Paint Spraying range last year, the adhesive manufacturer is introducing a dedicated range of tapes specifically for spraying plaster, including the tesa professional 4845 PE Plastering Tape. The new masking range, available from the 1st May 2021 in most tesa stockists, is based on

waterproof, hand tearable, cloth, PVC and tesa's new environmentally friendly PE-backed tapes. Created with the need to withstand the thickness and heavy weight of spray plaster, these tapes can be applied on cold or damp brickwork and concrete, without compromising on a sharp finish.



**Your choice for fast,
accurate specification**



**Talk to your ADM on how Brewers can give you fast, accurate
Albany paint specification, sent straight to where you are.**

See pages 24-25 for details.

Your choice for outdoor jobs



20%
OFF



YOUR FIRST PURCHASE
WITH A BREWERS ACCOUNT*

Ask in-store or visit brewers.co.uk

*New cash or credit account holders only

Over 180 stores nationwide