

THE PROFESSIONAL PAINTER & DECORATOR

Winter 2023



**WHATEVER THE JOB,
WE'VE GOT YOU.**



#1 CHOICE
FOR TRADE PROFESSIONALS



wernerco.co.uk

Brewers
DECORATOR CENTRES

Ennedi Khaki
From the Albany Fantasy Wallpaper Collection

Your choice for paint and wallpaper



20%
OFF



YOUR FIRST PURCHASE
WITH A BREWERS ACCOUNT*

Ask in-store or visit brewers.co.uk

*New cash or credit account holders only

Over 200 stores nationwide

As the year enters the final quarter, the Winter Edition brings colour and pattern to brighten up the gloomy days with the key trends in colour for 2024. Nicola Holmes, Colour Consultant from AkzoNobel, provides insight into the extensive research behind the selection of Dulux Colour of the Year and why it makes business sense for decorators to market their knowledge of colour.

Every decorator is aware that the tools they use impact efficiency. Andy Cummins, Senior Product Manager from Purdy, gives the lowdown on what to look out for in a roller system to help you achieve the best finish in the shortest possible time.

With more frequent and heavy rain, mould and mildew are an increasingly common problem, especially in the winter months, for homeowners and decorators to deal with. Zinsser experts give their advice on preventing and removing mould. While Brewers Technical Specialist Nick Church provides helpful guidance on painting around a wood burner.

There are many more articles on advice, techniques, information for the professional decorator and, as ever, a roundup of the latest new and updated products in our marketplace section.

We'd love to include more work from UK decorators in future magazines, so please do share your products and projects with us at ppdeditorial@saintpublicity.co.uk

Catherine Saint, Editor



42 Decorating safety

– Hamilton offer advice



46 Test drive

– Mercedes-Benz Citan

52 Marvellous marbling

– Cait Whitson offers tips

56 Restore outdoor

– Solutions from Owatrol



58 Paperhanging tips

– Advice from Bobbi Beck

60 Keep the fire burning

– Painting around stoves

62 Tape measure test

– David Stokes tries the best



66 The gear guide

– Decorating tools for pros

4 Trade news

12 Colour of the year

– Dulux Trade

14 Design of the year

– Graham & Brown



16 Sweet treats

– from Little Greene

18 Planet friendly painting

24 The importance of eye protection



26 Rolling perfection

– Solutions from Purdy

30 Making the most of colour of the year

34 Van security

– An insurers' guide

40 Stopping mould

– Zinsser has the answers

Published by

DPA Publishing Ltd
Stoney Lane Barn, Stoney Lane,
Bovingdon, Hertfordshire HP3 0LY

Advertising

Richard Daynes
01442 832715
richarddaynes@btinternet.com

Editorial

Catherine Saint Publicity
07941 590183
ppdeditorial@saintpublicity.co.uk

Production

empathicVisions
07789 725074
ppd@empathicvisions.co.uk

The magazine's contents are put together with good faith, care and attention; however, the publisher cannot be held responsible for any inaccuracy of the information provided by contributors in the publication.

21 & 22 NOVEMBER
CBS ARENA, COVENTRY

Covers everything



- ◆ 100 exhibitors
- ◆ Demos by trade experts
- ◆ Central location
- ◆ Business-boosting seminars
- ◆ Massive savings
- ◆ Competitions, giveaways and showguide

www.paintshow.co.uk

Coming soon...

P&D SHOW PLUS
www.pdshowplus.co.uk

A brand new regional event
See the next issue of PP&D!

Training has never been so important

THE LATEST FIGURES reported by the Health and Safety Executive (HSE) in its annual work-related fatal injuries report show that, sadly, falls from height killed more people than any other type of workplace accident last year, an increase of 11 on the previous year. For any tradespeople that work at height, there is an inherent risk, but while the risks can be great, there are ways to minimise the possibility of accidents and injuries.

Mark Robson, Product Manager at Werner, says, "While working at height might feel like second nature to some, it can be easy to overlook simple yet vital safety practices when carrying out everyday jobs. It's crucial that users follow best practice guidelines to make working at height both easier and safer.

"When purchasing any equipment for a job that involves risk, it is always advised to invest in high-quality products that are sourced from reputable and trusted manufacturers. Cheaper equipment may not have been tested to the same standards as a certified and trusted manufacturer, therefore, may not guarantee the same level of safety.

"Similarly, the same precautions should be taken with buying used equipment. The product's history is unknown, how it has been stored or if it has had any previous repairs or damages."

Refresher training every year is highly advised in order to ensure that users understand and are adhering to the current operating safety procedures, especially for those who may carry out jobs from height on an infrequent basis.

It can be challenging keeping on top of the latest safety guidelines and work at height regulations, which are continually being reviewed. Werner launched its Stepping Up to Ladder Safety campaign in a bid to help professionals stay safe when working at height. Featuring a range of downloadable guides, the

campaign helps to demonstrate best practice across a variety of different topics, from how to choose the correct ladder for the job, to how to inspect access equipment correctly.

Mark continues, "When using tools day in day out it can be easy to overlook the wear and tear of equipment, therefore regular inspections should be carried out before each use to ensure its ongoing safety for users.

"Potential faults that can come from age, exposure to the weather elements and excessive use could leave users vulnerable to injury if not checked properly. So, it is essential that inspections are carried out on equipment before each use to ensure it is safe, and that these are carried out by a professional who can identify problems early on."

The need for inspection and how frequently these occur should be determined through risk assessments on a job-by-job basis.



To view Werner's Ladder Safety Guides, please visit
www.wernerco.com/uk/ladder-safety

See the full Government report at
www.hse.gov.uk/statistics/pdf/fatalinjuries.pdf

Same great products,
with a more eco-friendly
solution.



**WIN
THE
WAR
ON WASTE
PLASTICS**



38% EXTRA The foil sealant range with 400ml for the same average price of a 290ml cartridge

Better for the planet - Better on your pocket!

- 96% Less waste & less than 1% plastic compared with standard cartridges
- Superb performance and product range

For more info call: 01302 770 234
or email: sales@tembediy.com



HIPPO®

Sealants Fillers
Adhesives

www.tembediy.com

Pro-tips from The Trade Line

LOOKING FOR ADVICE about technical paint finishes and application? The Trade Line is a brand-new series of videos containing high-quality, professional advice from Brewers Decorator Centre's Senior Specialist, Nick Church.

Nick is a level 3 ICorr qualified painting inspector, specialising in industrial, commercial and specialist coatings for floors, cladding, anti-corrosive systems, roofs, fire retardants, anti-graffiti and hygiene.

The new video series introduces you to a variety of protective coatings and ways in which they can be used. From understanding the importance of technical data sheets to finding out more about fire protective paints, we have got you covered.



From damp to fire, the YouTube series covers a wide variety of subjects.

Looking for advice on a specific job? Our Specialist Coatings Advisors can build on The Trade Line, providing you with bespoke specifications and support, ensuring you achieve the best possible finish. Get in touch with a member of the team today on 01323 576101. The team are contactable Monday–Friday 8:30am–5pm.

Brewers carry the widest range of problem-solving paints and primers, and if we don't already stock a product to solve your decorating problem, we will find it for you. No matter what the issue is; staining, water or fire damage, mould, damp or poor adhesion on shiny substrates, we will provide you with the advice to get the right product.

<https://tinyurl.com/BrewersTradeLine>

OSMO WOOD FINISHES. MIXED TO PERFECTION.

A variety of interior and exterior Osmo wood finishes can be mixed on demand and available the same day using the Osmo Tinting System.

osmo[®]



NEW MIX IN STORE

- Interior & exterior products available.
- Endless range of colours.
- Can be mixed to RAL, NCS & BS colours.
- Available from 40+ stores nationwide.

www.osmouk.com



LIMITS ARE THE ENEMY

Need is a very
subjective word.



MAVERICK®

COMING SOON

Stockist enquiries to hello@maverickpro.com



@beamaverickpro

Learn more:



The home of
painting &
decorating
excellence



Are you looking to broaden your expertise?

Dulux Academy is dedicated to developing skills, knowledge and confidence at every stage of a trade professional's career.

Book onto a Dulux Academy course to elevate your existing skill set:

- Spray
- Wallpapering
- Painting & Decorating
- Colour & Design

Where to find us:

1	SOUTH LANARKSHIRE	6	ALTRINCHAM	11	TAUNTON
2	LEEDS	7	WALSALL	12	PORTSMOUTH
3	BOLTON	8	NORWICH	13	NEWPORT
4	SCUNTHORPE	9	SLOUGH		
5	LINCOLN	10	THURROCK		

All courses, dates, locations and booking availability can be found at
duluxacademy.co.uk

AkzoNobel

DISCOVER THE HUB



Scan here
for more
information



Unlock your learning potential online

With a wide range of engaging, and interactive learning resources in **The HUB** - there's never been a better time to learn with Dulux Academy, anytime, anywhere.

To find out more contact the team on **01753 877 224**
or duluxacademy@akzonobel.com


Dulux
ACADEMY

Decorator Centre updates its can recycling service

DULUX DECORATOR CENTRE is pleased to announce that customers can now recycle any empty paint can from any brand at their local store. This improvement will make can recycling simpler and easier for decorators and contractors, helping them to minimise the amount of waste being sent to landfill and maximise their environmental credentials.

The can recycling service, in partnership with Veolia, is a free service for all customers. They can either drop empty cans off at any of their stores or arrange for collection if a delivery is being made to site, preventing them from being sent to landfill. Plastic cans are shredded, washed and sent back to the plastics market, and metal cans are melted into new steel and returned to the general market to create tools and products.

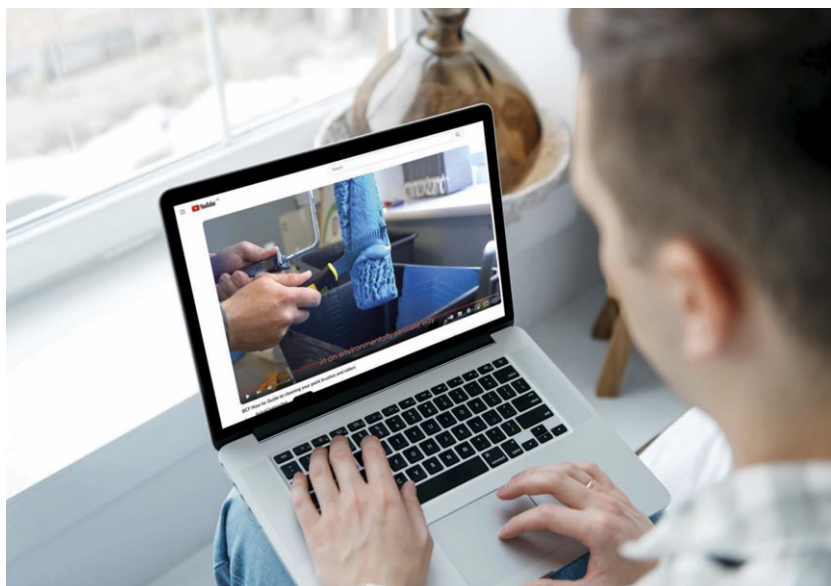
Previously, the service only accepted paint cans from AkzoNobel brands, but with these enhancements, Dulux Decorator Centre now accepts empty cans from any brand for recycling.

"We know sustainability is of ever-growing importance to not just our customers, but to their clients as well. This was proven last year when we reached the brilliant milestone of recycling our one millionth can. To achieve our mission of tripling the number of cans we recycle by 2025, we decided to update our service to be able to recycle any branded decorative paint cans," explains Duncan Lochhead, Commercial Sustainability Manager at Dulux Decorator Centre.

"By enabling paint cans from all brands to be recycled with us, we're ensuring our customers can make responsible choices at every stage of their project – beginning with choosing our most sustainable paint products, to finally recycling their empty cans with us."

As part of the can recycling service, DDC supports account holders with sustainability reporting, by keeping records of how many cans they have recycled in the year. Showcasing these figures helps decorators secure and maintain sustainability-minded clientele, by proving their commitment to environmental efficiency.

For more information, please visit www.duluxdecoratorcentre.co.uk/can-recycling



Joint industry effort to promote sustainability

THE BRITISH COATINGS Federation and the Painting and Decorating Association have collaborated to produce a new video which will help consumers save time, money and resources when painting.

Many decorators and DIYers are wasting paint, water and time by unnecessarily cleaning brushes and rollers before the end of a project. As well as tips on how to store paint brushes and rollers overnight, the video explains how to recover paint from painting tools before washing them.

The new video was filmed with leading painting and decorating contractor Bagnalls, produced in-house by BCF, using tools kindly donated by Purdy.

By following the guidance, the key savings identified in the video are:

- Recovering up to 75% of paint lost by cleaning paint brushes and rollers correctly after use
- Spending four times less time cleaning painting tools
- Using 10 litres less water


As trade bodies for the UK Decorative Paint industry, both BCF and the PDA are committed to actively supporting sustainability initiatives being undertaken by the sector. Both have also committed to their own sustainability schemes – Paint Green from the PDA and PaintCare from BCF.

Tom Bowtell, CEO of the BCF, commented, "Sustainability is core to BCF's work. This new video is a great example of how small changes can make a big difference. If every household followed these guidelines, we could collectively save approximately 2.5 million litres of decorative paint per year, the equivalent of 100 Olympic-sized swimming pools!"

PDA Chief Executive, Neil Ogilvie, said, "This new video fits perfectly with the Paint Green campaigns' aim to help our Members create systemic change to protect the environment. We are initially focusing on waste and taking up existing schemes for paint and container recycling. However, we are already getting feedback from Members on further steps towards sustainable working practices that we can introduce in the future."

Joanne Gualda, Director at Bagnalls, commented, "There are many ways in which Bagnalls is addressing its impact on the environment from paint can recycling to donating leftover paint to projects through our established Community Paintbrush scheme. We were more than happy to support the BCF, the PDA and other painting industry experts in creating an informative video that portrays such an important environmental message."

See the video at <https://youtu.be/5lZ8pK9rTsw>



**NOT ALL BRUSHES
ARE CREATED EQUAL.**

Expertly crafted for lasting quality.

Purdy brushes are handcrafted by expert brush makers, many with decades of experience. Our alderwood handles are light, durable and manoeuvrable - and absorb sweat to keep hands dry. Our blend of synthetic filaments achieve the best finish with modern paint formulations and deliver consistent performance through the entire life of the brush.

Purdy® – dedicated to achieving the highest quality standards.

purdy.co.uk



The only applicator brand
endorsed by the PDA

A delicate, optimistic and modern tone that is understated and comforting, bringing a sense of stability and softness to a space.

Sweet Embrace™

For 21 years, the Dulux Colour of the Year has been decided based on extensive trends research conducted by Dulux colour experts and international design professionals. Dulux's Colour of the Year for 2024 reflects people's need for simplicity, meaning and a sense of belonging.

Marianne Shillingford, Colour Expert and Creative Director at Dulux, explains: "What is so wonderful about Sweet Embrace™ is its soothing subtlety. While being a

beautiful standalone colour, it's a hue that matches perfectly with so many other shades so that decorators can use it as a backdrop to build a totally individual space upon. A shade as versatile as Sweet Embrace™ encourages us to get creative and fashion spaces that allow occupants to feel completely at home."

Nicola Holmes, Skills Development Consultant – Colour & Design at Dulux, commented: "Sweet Embrace™, together with its three supporting palettes,

Ombre effect using colours from the Warm palette



Dulux Trade
www.duluxtrade.co.uk



Sweet Embrace™ alongside Tranquil Dawn™ from the Calm palette



Dulux ACADEMY

To support decorators further, Dulux Academy offers courses on the use of colour. Decorators can find details of upcoming events and register at <https://academy.duluxtradepaintexpert.co.uk/>



COLOUR OF THE YEAR 2024



arms decorators with the tools required to give them confidence when advising clients on their colour choices and design visions. With this resource in their toolkit, decorators can build a reputation as an expert in colour selection.”

Professional specifiers and decorators can also use the Dulux Visualizer App to show their customers what each Dulux Colour Futures™ tone will look like in their space using augmented reality. ■



The Calm palette is ideal for traditionally stressful spaces, such as an office.

To help decorators provide their customers with inspiration, Dulux also launched three easy-to-use, versatile Colour Futures™ palettes that complement Sweet Embrace™.



A Warm palette for comforting spaces

A compilation of global earth tones that can be used to create spaces for occupants to feel snug and find comfort. These tones are ideal for bedroom, living, kitchen and dining spaces as they feel familiar and embracing.



A Calm palette for quiet spaces

Fluid greens and blues have a naturally clarifying effect and bring a feeling of serenity. They are perfect for bathrooms and home offices to help people relax and relieve stress.



An Uplifting palette to create friendly spaces

A mix of modern yellows with soft lilacs, this palette has a positive, uplifting mood. The colours in this palette can be used in the hallway to bring a sense of joy to those entering a property. They can also be used in the bathroom or dressing areas to encourage a ‘get up and go’ attitude.



GRAHAM & BROWN ANNOUNCE THEIR

Design and Colour of the Year

Graham & Brown have revealed their 2024 Design of the Year as **New Eden**, and Colour of the Year **Viridis**. Their in-house design studio has focused on the 'Utopia' trend, creating a space led by a design that encourages welcoming and acceptance to all those who enter the home.

Blurring boundaries with rooms that can be both inside and outside, and inspired by the Japanese art of Omotenashi, New Eden creates a beautiful backdrop for entertaining. This dramatic forest scape is full of hidden treasures, pops of colour emerge through the design with yellow, orange, and pink tones complimenting the emerald tree canopies.

New Eden is available in five other colourways, in addition to Emerald is the vibrant Majestic, moody Porcelain, opulent Mulberry, regal Navy and the calming Viridis colour way. New Eden Majestic is the brightest design, with rich striking teal shades interlaced with pops of coral and yellow florals. Whereas the New Eden Porcelain is a blue wash design, creating a subdued powdery colour scheme. Each design is available as wallpaper, custom wallpaper (mural), made to measure curtains and blinds, cushions and bed linen.



New Eden is available as wallpaper, mural (above), curtains, blinds, cushions and bed linen

This wallpaper will transform any room, and is perfectly complemented with Graham & Brown's Colour of the Year, Viridis (below), a beautiful muted green colour, conscientiously curated to create a warm and welcoming space, offering a calming atmosphere.

Viridis is a complex yet flexible hue, it is a natural and uplifting shade, providing an inventive alternative to the greige interior schemes. It can be used in small cosy spaces to create a calming effect or in larger rooms to transform the space into a sophisticated yet relaxing space. It is especially perfect for the entertaining and entrance areas where outside and inside meet.

Like all Graham & Brown paint, Viridis is an eco-paint, it is water-based, odourless and ultra-low VOC, resulting in a more environmentally friendly product. The paint cans are fully recyclable and there is no animal testing involved in any Graham & Brown products. ■

**GRAHAM
& BROWN**

EST. 1946

Graham & Brown

www.grahambrown.com

everything's *better*
when you visit
Crown Decorating Centres



- ✓ expert advice
- ✓ top brands
- ✓ nice wide doors

crowndecoratingcentres.co.uk

It's not just paint,
it's personal.

CROWN
DECORATING CENTRES



Chocolate Heaven

Little Greene's 'Sweet Treats' is a curated collection of warm, neutral shades of honey, caramel and chocolate, each colour inspired by delicious desserts and some of the world's most tasteful sweet treats.

This palette of nine versatile colours will bring warmth and comfort, creating cosy enveloping interiors that appeal to all the senses. The range includes time-honoured shades, accurately recreated from historic walls, woodwork and furnishings, at a number of places cared for by the National Trust, for future generations to enjoy.

Perfect for use in 'all-over' schemes in both contemporary or traditional settings, these delightful neutral hues work really well in a colour drenched room. Juxtapose them with deeper browns and blacks to create a captivating, sophisticated interior. Soft, warmer whites will elegantly complement all these shades to maintain a more traditional feel, and they will equally support an accent of a brighter, contrasting highlight for a more dynamic look.

Little Greene®

— PAINT & PAPER —

Little Greene

www.littlegreene.com



Alongside the wonderfully rich Little Greene favourite 'Chocolate Colour', tempting new shades include sophisticated golds such as 'Madeleine' and 'Bombolone', on trend caramels 'Galette' and 'Affogato', soft muted pinks 'Split Pink' and 'Mochi', the terracotta-toned indulgent 'Muscovado' and rich chocolate 'Ganache'.

Each shade is available in the full range of Little Greene finishes; there's one that's suitable for almost every surface inside or outside your home.

Ruth Mottershead, Creative Director, comments, "Earthy shades, particularly browns have historically been used for their practicality, and are often dismissed as being dated or dull. However, rich warm colours based on umber and ochre deliver cocooning, restful and charming spaces. Deeper, richer caramels are perfect for creating enticing and sumptuous spaces, whilst soft golds provide comfort and reflect the desire to create warmth within our homes." ■

Madeleine™ 338.

A muted gold colour serves the space between muted-yellow and warm-neutral. Use Madeleine as the main wall colour in a calm, welcoming space. Bring in Bombolone or Bassoon on the trim as a darker complementary tone.

Bombolone™ 339.

Mellow, honeyed shade inspired by bomboloni doughnuts. Bombolone is gently complemented by Stock (off-white) or the elegant neutral Silt, and can be stunningly contrasted with a small pop of Marine Blue or Woad.

Galette™ 340.

A mid-weight orange-brown, excellent alongside rustic natural finishes, be they oak or darker woods, and stone or quarry tiled floors. Add a flash of brighter colour with Mister David in a contemporary scheme, or Yellow-Pink in a more classical interior.

Split Pink 341.

An elegant warm stone colour, this pink effortlessly harmonises with Masquerade, and can drive an instantly successful transformation of a neglected bedroom or lounge. It also pairs beautifully with Dock Blue, Basalt or Obsidian Green.

Affogato™ 342.

This shade efficiently combines coffee and dessert in one, and makes for an excellent partner to dark browns and soft blacks – use it with Lamp Black and dark furniture to create a captivating, sophisticated scheme in a casual living space.

Muscovado™ 343.

This rich, deep, warm, earth-red is perfect for use in an indulgent space, whether a relaxing room or an everyday space such as the kitchen. It can be framed with one or more of the neutral Slaked Lime Colour Scales family.

Mochi™ 344.

Taken from the dining room of Calke Abbey in Derbyshire, use Mochi to create a more contemporary, coordinated dining room or office space, alongside the deeper colour Scullery on skirting boards and doors, and Shirting or Slaked Lime on the ceiling.

Ganache™ 345.

A blend of rich chocolate and hot cream, Ganache is likely to be the darkest shade in your room scheme, but consider pairing it with the even darker Chocolate Colour for a deeply committed interior design statement.

Chocolate Colour 124.

The deepest of the shades in this collection works well as a warmer alternative to black, charcoal or a dark blue. Accent with Marigold or Orange Aurora, or use it as an exquisite trim colour to frame a wall of Arras or Tuscan Red.

ProDec
ADVANCE

IceFusion

OUR NEW ROLL MODELS



2" Micro Rollers for
railings, spindles and
hard to reach places



4" Jumbo Mini Rollers
hold twice as much paint
with less reloading

featuring **Fused Fibre Technology™**

LINT FREE
ULTRA SMOOTH FINISH

www.prodec.uk.com



The many shades of **GREEN**

Many people remain unaware of the connection between the paint they use and their carbon footprint. David Elphick, from national painting contractor Bagnalls, believes that you can build valuable customer relationships by being a conduit of information on environmentally friendly paint solutions. By providing guidance, decorators can begin a positive customer relationship which benefits all...

The Drive for Eco-Paints

Since the early 2000s, coatings manufacturers have faced pressure from governments to re-formulate their products and meet minimum levels of unhealthy atmospheric Volatile Organic Compounds (VOCs).

More recently, attention has been focussed on lowering greenhouse gas (GHG) emissions in the race to limit global temperature rises. In addition to regulation, there is increasing public concern about air quality, increasing pressure for responsible action by manufacturers.

Paint production is carbon-intensive, involving upstream and downstream activities like mining, transportation, factory operations, distribution, and product emissions.

It is generally accepted that 10% of the environmental footprint of coatings is during formulation, 50% generated upstream, and 40% created downstream. Manufacturers are committed to reducing greenhouse gas emissions throughout the entire supply chain. Downstream, purchaser's and applicator's readiness to use eco-friendly coatings is pivotal in reducing the environmental impact of projects.

What is an Eco-paint

Ecologically friendly paints are designed to emit fewer VOCs and have lower carbon footprints, referred to as

embodied carbon. Manufacturers conduct tests to measure VOC and CO₂(e) – a unit of measurement for greenhouse gases, of which CO₂ is one – resulting in Environmental Product Declaration (EPD) certificates.

EPDs don't serve as official endorsements but provide hard data on a paint product's impact or global warming potential. This allows purchasers and applicators to make informed specification decisions which reduce the environmental footprint of painting projects.

Eco-Paints on the Market

As examples, several suppliers of architectural coatings have developed products that meet these green building standards, offering sustainable paint options and therefore making notable contributions to sustainability efforts – Akzo Nobel (Dulux), Crown and PPG each have a handful of products with EPDs meeting BREEAM standards.

Paint 360 re-engineer a 50:50 blend of recycled and virgin paint to produce emulsion and mould inhibiting products. They are working towards BREEAM and LEED certification and early testing indicates their paint products more than meet the VOC and CO₂(e) standards. As a socially motivated company, they employ young people with barriers to employment. Additionally, their recycling process saves 0.5kg of CO₂ per paint can recycled and their products come in recycled containers. >



Your choice for interior trim



Available
in thousands
of colours



20%
OFF



YOUR FIRST PURCHASE
WITH A BREWERS ACCOUNT*

Ask in-store or visit brewers.co.uk

*New cash or credit account holders only

Over 200 stores nationwide

- Graphenstone claim they make the market's only plastic-free paint, as well as the lowest VOC and CO₂(e) levels. They combine traditional material, up to 70% lime, with Graphene (a charcoal-like substance), which provides 'enhanced surface bond, durability and greater flexibility'. Remarkably these paints absorb up to 5.5kg of CO₂ per 15L of paint use.

Companies such as Little Greene, Farrow and Ball and Earthborn all offer water based paints with low or Trace VOCs.

Embracing Evolution

Decorators can be resistant to switching to a new product, particularly one at a higher price point, and requiring new application techniques. However classic solvent products are being phased out and inevitably major manufacturers will discontinue their most environmentally harmful ranges.

Low VOC eco-paint products are now becoming standard. For example, Akzo Nobel have discontinued their Aircure Diamond Matt product because the low-VOC technology is now in the usual Diamond Matt product at no extra cost.

It's encouraging to see manufacturers start to remove the cost compromise barrier for purchasers and applicators.

Life-Cycle Planning

Choosing a superior paint product impacts the life-cycle environmental impact of a building and makes good business sense in the long-term.

Akzo Nobel has introduced the Life-Cycle Assessment tool, which charts the GHG impact and cost of products from their portfolio over long timeframes. Customers can visualise the kilograms of CO₂(e) against cost, making product decisions that align with reduction and net-zero goals.

David Elphick is an Account Development Manager and Customer Relationship Manager at Alfred Bagnall & Sons with over 15 years industry experience.



In year-one application, there may be little difference in the CO₂(e) impact. However, an inferior product will generally provide less coverage per container, fail earlier, and require reapplication more regularly. Labour and product costs mount up over cycles, exposing the false economy of buying cheaply in year-one.

Superior products have a lower CO₂(e), require less product in fewer containers to cover the same area, and there are less emissions from associated retail and contractor emissions in re-application years.

The correct application of paint systems is also vital. Choosing knowledgeable, manufacturer-backed contractors and professional decorators, ensures that the paint system is applied to maximise durability, extending lifecycles.

Conclusion

Customer relationships start with conversations and are solidified by delivering solutions. By discussing life-cycle savings and not short-term budgets, and understanding a customer's environmental objectives, contractor firms and painters and decorators can bring knowledge to customers, join their sustainability journey for the long-term and build long-term rewarding partnerships. ■

Sources and further reading

British Coatings Federation – PaintCare
<https://www.paintcare.org.uk/>

Paint360
<https://www.paint360.co.uk/>

BSRIA White Paper
<https://tinyurl.com/BSRIA-BREEAM>

Architecture 2030 – Why the built environment?
<https://architecture2030.org/>

World Green Building Council
<https://worldgbc.org/>

THE FASTEST WAY TO FINISH ALL SMALL JOBS



Ultra QuickShot™

- > Industry-first **electronic airless gun**: delivering a perfect airless finish
- > **Instant response trigger**: virtually eliminates spits
- > **Lightest & smallest** airless spray gun



graco.com/quickshot

"FAIR PLAY, ZIN YOU'VE ABSOLU NAILED THIS ON

Kris Devos, @foxythedecorator



"I'M GOBSMACKED A WATER-BASED PAINT CAN BE SO GOOD AT COMPLETING SUCH CHALLENGING TASKS LIKE ADHESION AND STAIN BLOCKING!"

Mike Gregory, @decoratorsforumuk



"WE TRIALLED IT OVER OIL-BASED PAINTS WITHOUT SANDING AND BARE AND STAINED TIMBER. COMPARED TO THE OTHER PRODUCTS WE WERE TESTING, B-I-N AQUA WON BY A CLEAR MILE. IT'S A FANTASTIC PRODUCT THAT I HIGHLY RECOMMEND AND WILL CONTINUE TO USE!"

Kevin Tingley, @paintwarrior_



THE PAINT OF LEGENDS SINCE 1849

SSER.
UTELY
NE!"



ZINSSERUK.COM

@ZINSSERUK



Eye don't believe it

SURVEY REVEALS 1-IN-4 TRADESPEOPLE DON'T PROTECT THEIR SIGHT

Despite 35% of tradespeople admitting they know of someone who has injured their eyes at work, more than a quarter of workers admitting they don't protect their eyes on-site, according to a new survey from Specsavers...

Of the many tradespeople putting their health at risk, painters were the worst culprits, with 26% admitting they never wear safety eyewear, followed by brickies (24%) and sparks (22%). That's a real risk for workers' health, according to experts from Specsavers.

"Things commonly found on building sites such as paints, solvents and debris can cause serious harm if you get them in your eyes. We're asking workers to open their eyes and put safety first by making sure they are equipped with the proper PPE," said Giles Edmonds, Clinical Services Director at Specsavers.

As well as building materials, prolonged exposure to UV rays from working outdoors can increase the chances of eye conditions such as cataracts.

Giles continued, "According to our findings up to half of workers need prescription glasses but 60% of those workers are only wearing their normal glasses on the job, meaning they are putting their eyes at serious risk."

Specsavers has developed a range of safety glasses equipped with scratch-resistant lenses and robust frame materials. The safety glasses are fitted with prescription lenses, allowing them to be worn in place of employees' everyday spectacles. ■

Specsavers

To find out more about Specsavers' construction range and regulation visit www.specsavers.co.uk



General steps and risk assessments

When working out what steps to take to keep your employees safe, the starting point is always the Health and Safety at Work etc Act 1974. Most importantly, this Act sets out the principle that employers need to consider what risks to health and safety are present in the workplace, and take sensible steps to tackle them.

Later rules (notably, the Management of Health and Safety at Work Regulations 1999) clarify how you should manage those risks. The regulations make it an obligation for employers to carry out a risk assessment which covers the following:

- Systematically identify what could cause injury or illness in the workplace
- Assess the likelihood of harm occurring and its severity
- Decide what action needs to be taken to eliminate the hazard or control the risk

Rules around PPE

The Personal Protective Equipment (PPE) Regulations 1992 are very important when it comes to eye protection. In simple terms, these rules require you to do the following:

- Make sure you provide suitable PPE when the risk to health and safety cannot be controlled in any other way.
- Ensure that the PPE you supply is specifically suitable for the risks you have identified.
- If more than one PPE items are to be worn at once, they need to be effective and compatible with each other. On a construction site for instance, make sure your eyewear is designed to be used with a hard hat.
- Keep PPE in good repair and ensure it is stored correctly.
- Make sure that employees know how to use it — and that they actually use it. Employees themselves are also under a duty to make sure they use PPE as directed.

RAPID *Delivery*

Store-to-door in **two hours***



To find out
more scan the
QR code

- 1** Place your order
- 2** Choose Rapid Delivery
- 3** Track your order LIVE
- 4** Delivery within 2 hours*

Faster • Smarter • Monday - Saturday



DECORATOR CENTRE

125 YEARS | CENTRED on you

AkzoNobel

*Delivery within 2 hours from £10. Please visit duluxdecoratorcentre.co.uk for full terms of delivery.



Rolling out the *perfect* finish



Selecting the right roller system for the job can have a real impact on your productivity.

Here Andy Cummins, Senior Product Manager at Purdy, discusses what to look out for in a roller system to help you achieve the best finish in the shortest possible time.



The Purdy Revolution roller frame features an open design and ribbed ends that prevent the sleeve 'walking off'

Roller Frame

A roller frame should be designed to be comfortably used all day without causing fatigue. Look for a lightweight frame with an open design, that means you can get more paint on the wall and efficiently get the job done. It's also easier to clean and you won't get any residual build-up clogging up the frame.

An ergonomically designed rubberised grip will stop the roller slipping in your hand, even if your hand gets sweaty. Whilst ribbed ends, like those on the Purdy Revolution Frame, will prevent sleeve 'walk off', again helping you to maximise efficiency,

Roller jobs can be hard work, particularly if you are painting large areas – so the ideal is to choose a roller system that achieves a good quality finish but also makes application as easy as possible. Here are a few key characteristics you should look for when you buy.

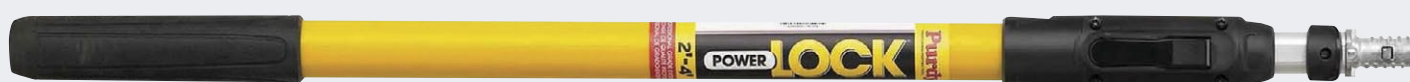


Purdy offer a range of sleeve types, such as this Colossus which holds and releases more paint than a standard sleeve

Sleeve Shape

Look for a sleeve with tapered ends, as it won't get paint build-up at the edges, reducing the likelihood of unsightly tramlines and saving you the hassle of having to go over your fresh coat again. >

A Power Lock extension pole makes painting ceilings a breeze, without having to reach for a step.



Stress less just...

masq[®]

Professional masking solutions

Helping you choose the right tape for the job. Saving time, money and giving you a perfect finish



www.ciret.co.uk

sales@ciret.co.uk

+44 (0) 2392 457450

Purdy®

To find out more about the quality roller systems offered by Purdy, visit www.purdy.co.uk

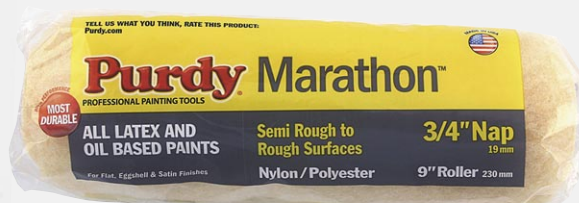
Purdy also offers rollers in 4½" and 6½" – Perfect for tighter spaces and furniture.



< Woven or knitted?

A knitted sleeve will provide a superior level of paint pick up and release, allowing you to maximise efficiency and reducing the number of times you need to reload your roller.

As a result, a knitted sleeve like the Purdy Marathon is ideal for larger jobs, as it offers superior pick up and lay off. It's also incredibly durable, maintaining a flawless finish even after 40 hours of continual use.



Made with an exclusive blend of nylon and polyester, the Marathon Sleeve is Purdy's most durable.

A quality sleeve

The overall quality of a roller sleeve also has a significant effect on the finish you are able to achieve. A poorly made sleeve may use a cheap glue to bind the fabric to the core. This can result in the roller dropping lint in your fresh coat of paint, costing you time and causing unnecessary hassle.

It is therefore best to look out for a roller that uses a core of a strong material like polypropylene in combination with a high-quality epoxy to keep the fibres in place. ■





BOSCH

EXPERT M480 SANDING NETS

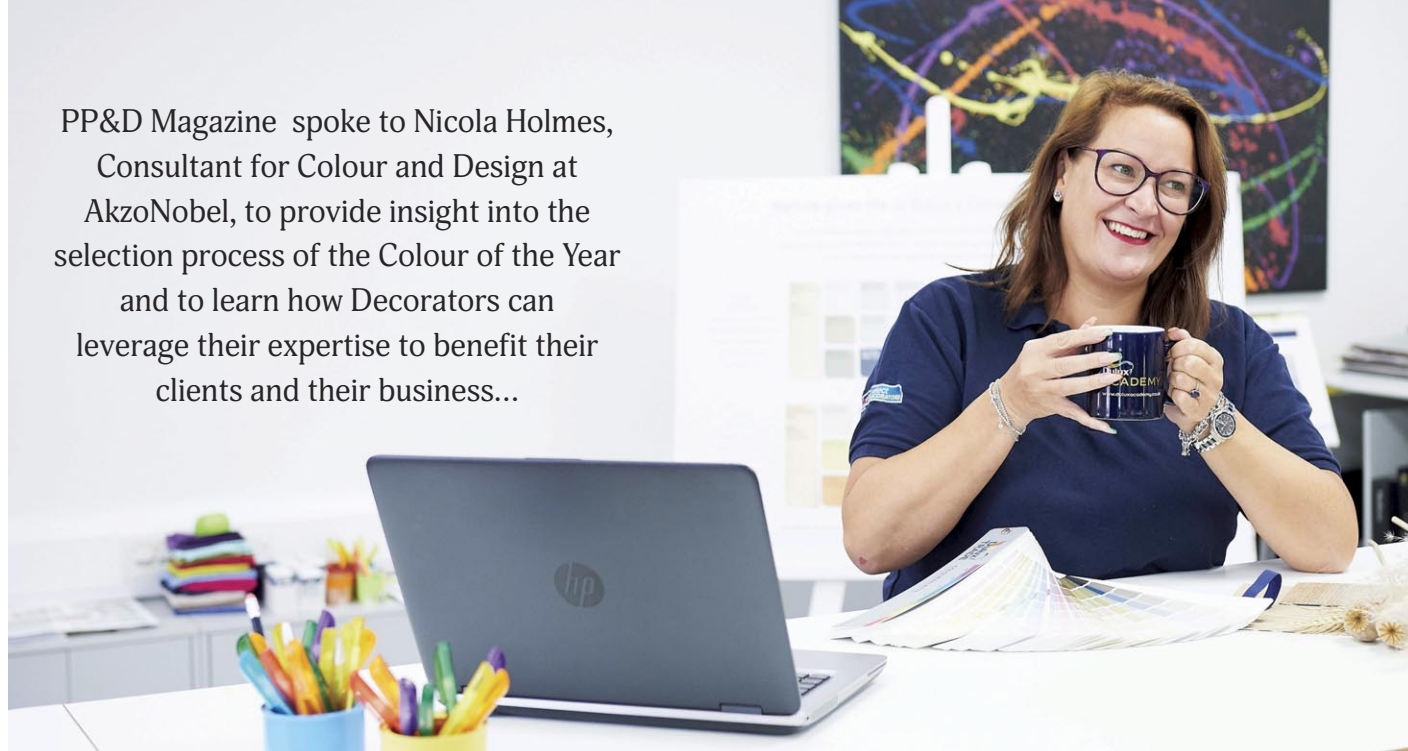
**MINIMUM DUST.
MAXIMUM PERFORMANCE.**



- Four times better dust reduction compared to conventional abrasive.
- Particles move straight through its open net instead of clogging the surface or polluting the air.
- A cleaner, more efficient sanding experience.



PP&D Magazine spoke to Nicola Holmes, Consultant for Colour and Design at AkzoNobel, to provide insight into the selection process of the Colour of the Year and to learn how Decorators can leverage their expertise to benefit their clients and their business...



Palettes of Potential

How are the palettes and the Colour of the Year determined?

Globally, independent designers, colour specialists, and architects are consulted about current events and the major themes and patterns influencing the home and business environments.

The AkzoNobel Global Aesthetics Centre then distils and interprets this data into the primary Colour of the Year and three schemes that are likely to appeal to both the residential and commercial consumers.

How can decorators engage customers with the colour?

Decorators frequently believe that the client always selects the colour, and that their skill is in the application.

However, many customers will look for decorators that understand the impact of colour in various spaces and how light changes its appearance. By sharing information, decorating companies can gain an advantage and establish themselves as an expert in their field.

Are decorators becoming more interested in how to use colour?

An increasing number are participating in the online workshops and colour courses offered by the Dulux Academy. New decorators coming into the profession are much more aware of the importance of colour.

They're starting to realise they can provide clients with more value by leveraging their understanding of colour. This has aided in business marketing, attracting new customers, and retaining existing ones.

How can people use the various Colour Futures Palettes?

The goal of the Colour Palettes and the Colour of the Year is to provide simple, useable colour schemes. Using the colour combinations provides a quick reference guide for choosing complementary colours as well as 'in style' ways to apply the various hues.

We have produced a useful smaller booklet that demonstrates how various colour palettes might be utilised in various rooms of a house and these are available at Dulux Decorating Centres. >



Dulux Trade
www.duluxtrade.co.uk

What were the factors that shaped the decisions for 2024?

Sustainability served as the unifying theme for everything this year, there was also a sense of wanting to cocoon and feel safe and secure in our homes. A crucial element was bringing nature into from the outside, and it was agreed that the Dulux Sweet Embrace™ would convey all these.



Nicola works for AkzoNobel as a Skills & Development Consultant for Colour and Design. Using her expertise she collaborates with Dulux Academy to provide courses on colour theory and design. Additionally, Nicola has played a significant role in drawing a global audience to the log-on 'live' seminars on colour theory and application. She is the 'go-to' authority on colour selection and application within different built environments.

CORAL

Work Smarter, Not Harder

LESS MESS

Never clean
another scuttle!

DURABLE

Extra-strong &
tear-resistant

HANDY FOR BREAKS

Tie-tapes keep tools
fresher for longer



LONGER LIFE

Extend container
lifespan



LESS WASTE

Save and reuse
any excess paint



QUICKER CHANGES

Easily swap liners
for different colours

The Original
Paintwiz®
Scuttle and Kettle Liners



Scan to learn more about
Paintwiz® Liners

coral-tools.com

hello@coral-tools.com



< For example, an inviting room for gatherings, like a kitchen or dining area, can be created with the Warm Palette's earth tones as the ideal backdrop.

The blue and green hues of the Calm Palette evoke nature and provide a tranquil atmosphere. It is perfect for settings like offices or bedrooms where concentration and calm are necessary.

The Uplifting Palette can be utilised in creative settings like kitchens or kid's bedrooms because it pushes colour boundaries to give positivity. The more vivid colours can be used as small accents, such as in a window reveal.

Utilising the booklet to demonstrate to clients the various applications of colour palettes is a brilliant idea. The palettes provide another simple point of reference, with hues in one line providing tonal variation and colours in another giving contrast. Sweet Embrace™ can be used with every shade in the colour palettes.

The ombré effect (shown left) has grown in popularity in interior design, especially in commercial settings.

This method of applying colour shading, which goes from light to dark, can look amazing on a wall.

Dulux Academy offer an Urban Effects course that combines artistic methods and has proven well-liked by decorators looking to add another skill to their repertoire.

Find out more and book a course online at

<https://academy.duluxtradepaintexpert.co.uk/>



What are the benefits of better colour and trends knowledge?

I would strongly recommend any decorators increasing their knowledge of colour as it's a great way to enhance the service they can give clients.

With social media being used as a showcase for many decorators, demonstrating fantastic colour schemes really can make a business stand out. This can be a way to attract new clients and to get noticed by interior designers and architects if you want to build up your potential leads. ■

Attending the P&D Show?
You can find Nicola and the
Dulux Academy team on Stand 49,
and have a chat about colour!



Got to have sharp
paint lines?

Frog It.™



The UK's No 1 Masking Tape Brand
frogtape.co.uk | Tel: 0333 015660

©Shurtape.co.uk 2023/ASW00627

Official Sponsors

FIXRADIO
THE BUILDER'S RADIO STATION

The Painting & Decorating Show

HAMILTON®

FOR THOSE WHO KNOW

THE PERFECT MATCH FOR THICK AND THIN PAINTS



Scan the QR Code for more information
and to download our new catalogue.

OUR INNOVATIVE BRAND NEW CLEANEDGE™
& MAXSTROKE™ PERFECTION BRUSHES,
THE PERFECT MATCH FOR TODAY'S PAINTS

THE RIGHT TOOL, THE RIGHT PAINT, THE PERFECT FINISH.



hamiltondecoratingtools.co.uk





If you're working as a tradesperson or courier and take pride in your van, the last thing you want to deal with is the stress of someone breaking into your vehicle...

Essential tips to protect your van and tools

Van theft isn't uncommon. In fact, recent research reveals that there were over 40,000 cases of tool theft in 2022. And with the cost of living affecting an increasing number of households, rates of theft may begin to rise too.

When it comes to security systems, make sure your van has a Thatcham Category 2 security alarm and immobiliser. Most vans will be factory fitted with an alarm and immobiliser, but older vans may require one to be installed manually.

Aside from security systems, the insurance experts at Toolbox have offered eight of their top tips for keeping your van and tools safe...

Empty your van

Even though Toolbox provides cover for your tools when they're left in your van overnight, it's still important to bring all your heavy-duty tools inside every evening so that they're not at risk of theft. Even though it may be a pain, an empty van is a big deterrent for thieves.

Inventory list

Many of us are fairly forgetful and if asked to recall every item kept in our vans, we're simply not going to remember. Therefore, it's really useful to make sure that you've got a list of all the tools and equipment kept in your van, and even have photos of each item too. Doing this allows you to keep on top of stock and to spot theft quickly. It'll also help if you have to make insurance claims, should the worst happen.

UV pens

Mark all of your tools and any high-value goods with your name or your business' name in UV ink. If you've done this, you're more likely to recover your tools if they get found by the police or if someone purchases them from the thief.

Also, when buying second hand tools, many tradespeople will look for UV markings that don't match the person selling, to see if they're stolen goods.

Speak to staff

Spend an afternoon with your team discussing the do's and don'ts when it comes to van and tool safety and security in order to protect your business. Alongside this, ensure that when onboarding a new member of staff, they are made aware of this advice. >

The Mirka logo is displayed in a bold, black, sans-serif font on a bright yellow rectangular background.

Mirka® LEROS-S

Reach Closer.

Mirka® LEROS-S is a compact length brushless sander with a highly flexible sanding head designed for effortless sanding of large surfaces. Balanced and easy to handle with two dedicated grip points, the LEROS-S has a large sanding head with a 5mm orbit.

For further information or to arrange a demonstration, please contact Customer Services on 01908 866100.

Dedicated to the finish.

See it in action at www.mirka.co.uk





< Park safely

If you're not parking in a secure location, it's important to make sure that you're prioritising well-lit areas, especially those that have CCTV. Areas that are well-lit and have active security measures tend to deter thieves.

Security locks

It's crucial that you invest in security locks for your van. The first option is slamlocks, which lock as soon as the van door is shut, making them a great option for couriers who are delivering from door-to-door. Next are van deadlocks, which are very difficult to get past as thieves would need to go through the internal lock to get to it. Finally, vibration sensor alarms will set off with a small vibration on the van, which is ideal for 'peeling' break-ins, where thieves break into your van by peeling open the doors of the van.

Don't forget your cat

No, we're not talking about your four-legged friend, we're talking about your catalytic converter. Many vans are targeted for this rather than the tools, parcels and other goods stored within the van, as a van's added ground clearance makes the catalytic converter much easier to get to. Consider purchasing an anti-theft device designed for catalytic converters.

Insure your van and tools

It's easy for insurance to fall to the bottom of tradespeople's 'to-do' lists, however, looking out for your future self and your business is worth it. When buying van insurance and tool insurance, make sure to check whether it covers your van and contents when parked away from home, or when contents are left in the van overnight. ■

toolbox
by Admiral

Toolbox is dedicated to helping self-employed and small business owners thrive by giving customers one less thing to think about, fully protected by an insurance product that works as hard as they do.

www.toolboxbyadmiral.com

Pro Grade Painter's Tapes and Maskers



Introducing WASHI-TEC® Masking Tape
Efficiency and perfection from Japan

www.kip-tape.co.uk • Tel: 03330 156600

kip®
Sticks to quality

 **MADE IN
BRITAIN**

BEDEC

THE PAINT COMPANY



Don't *just* decorate... **BEDEC-ORATE!**



Problem solving and time saving products
for *the professional decorator*



Innovators in Water-based Technology

Bedec Products Ltd., Units 1 & 2 Poplars Farm, Aythorpe Roding, Dunmow, Essex. CM6 1RY

Tel: +44 (0) 1279 876 657

Email: info@bedec.co.uk

www.bedec.co.uk





Brewers
DECORATOR CENTRES

Over 200 stores nationwide

ABINGDON
ALDERSHOT
ALTON
ALNWICK
ANDOVER
ASHFORD
AYLESBURY
BANBURY
BANGOR
BARNSTAPLE
BASILDON
BASINGSTOKE
BATH
BEDFORD
BEXHILL
BICESTER
BIRKENHEAD
BOURNEMOUTH
BRIGHTON
BRISTOL
BRIXHAM
BURGESS HILL
BURTON-UPON-TRENT
BURY ST EDMUNDS
CAMBRIDGE
CANNOCK
CANTERBURY
CARDIFF
CHELMSFORD
CHELTENHAM
CHESTER
CHICHESTER
CHRISTCHURCH
CLACTON-ON-SEA
COLCHESTER
CORBY
CRAWLEY
DARLINGTON
DERBY

DEREHAM
DONCASTER
DORCHESTER
DORKING
DOVER
DUNSTABLE
DURHAM
EASTBOURNE
EAST GRINSTEAD
EXETER
FAREHAM
FARNBOROUGH
FARNHAM
FOLKESTONE
FRINTON-ON-SEA
GILLINGHAM
GLOUCESTER
GORING-BY-SEA
GRANTHAM
GREAT YARMOUTH
GREENHITHE
GRIMSBY
GUILDFORD
HAILSHAM
HARLOW
HARROGATE
HASLEMERE
HASTINGS
HAYWARDS HEATH
HERNE BAY
HIGH WYCOMBE
HORSHAM
HOVE
HULL
IPSWICH
KIDDERMINSTER
KING'S LYNN
LEEDS
LEAMINGTON SPA

LEATHERHEAD
LEICESTER
LINCOLN
LIVERPOOL
LOUGHBOROUGH
LOUTH
LOWESTOFT
LYMINGTON
MAIDENHEAD
MAIDSTONE
MANSFIELD
MARGATE
MIDDLESBROUGH
MILTON KEYNES
MINWORTH
MORECAMBE
MORPETH
NEWBURY
NEWCASTLE
NEW MILTON
NEWPORT (IOW)
NEWPORT (S. Wales)
NEWTON ABBOT
NORTHAMPTON
NORWICH
NOTTINGHAM
NUNEATON
OXFORD
PETERBOROUGH
PETERSFIELD
PLYMOUTH
POOLE
PORTSMOUTH
READING
REDHILL
RINGWOOD
ST ALBANS
ST AUSTELL
ST ERTH (ST IVES)

ST NEOTS
SAFFRON WALDEN
SALFORD
SALISBURY
SEAFORD
SEVENOAKS
SHREWSBURY
SITTINGBOURNE
SOUTHAMPTON
STEVENAGE
STOCKPORT
STOKE-ON-TRENT
STOURBRIDGE
STRATFORD-UPON-AVON
SUDBURY
SUNDERLAND
SWANSEA
SWINDON
TAUNTON
TELFORD
THETFORD
TONBRIDGE
TORQUAY
TROWBRIDGE
TUNBRIDGE WELLS
UCKFIELD
WARE
WELLINGBOROUGH
WEYMOUTH
WINCHESTER
WINDSOR
WISBECH
WOKING
WOKINGHAM
WOLVERHAMPTON
WORCESTER
YORK

LONDON AREA
(within the M25)
ALDGATE
BARKING
BARNES
BATTERSEA
BOW
BRIXTON
BROMLEY
CHISWICK
COLINDALE
CROYDON
EDGWARE ROAD
ENFIELD
EPSOM
HAMMERSMITH
HAMPSTEAD GS
HILLINGDON
ISLINGTON
LEE
MORDEN
PECKHAM
PUTNEY
ROMFORD
STAINES
SURBITON
SUTTON
THORNTON HEATH
TWICKENHAM
VICTORIA
WATFORD
WELLING
WEYBRIDGE
WOOLWICH





FREE
DELIVERY*

Find your nearest store at
brewers.co.uk

* For orders above £50 including VAT





Stop the MOULD from taking HOLD

Mould and mildew has become an increasingly common problem affecting both residential and commercial buildings in the UK, with the English Housing Survey reporting around 904,000 homes with damp problems in 2021 and more recently several deaths in the UK.

Due to increased rainfall and the ongoing climate crisis, mould and damp is even more prevalent in the colder winter months, as mould forms around areas that collect moisture, such as windowpanes, and thrives in poorly ventilated areas like cupboards and wardrobes. It can also be caused by leaking pipes or rain seeping in because of roof or window frame damage.

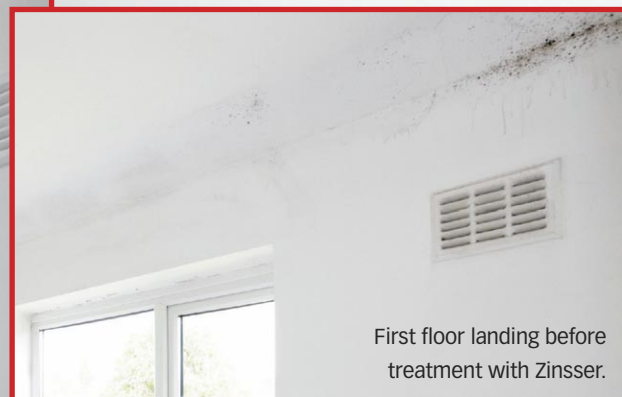
As well as being unsightly, pungent and difficult to expel, mould comes with serious health implications. Mould is known to produce allergens, irritants and sometimes even toxic substances, and inhaling mould spores can cause allergic reactions such as sneezing, red eyes, skin rashes and asthma attacks.

Those who are most susceptible include those with respiratory problems, allergies, asthma or a weakened immune system, which is why it is important for decorators and homeowners to use the best tools to eliminate mould covered surfaces. With over 170 years of quality and innovation, Zinsser provides the ultimate solution to every decorating problem, including mould prevention and removal.

Zinsser products have been specifically formulated to contain fungicides and biocides that are a tried and tested solution to combat the darkest of mould stains and keeps them at bay for up to seven years.

Protect your home from mould and condensation this winter with Zinsser's legendary range of mould and mildew-resistant products.

Properly treated, this area will now stay mould free for many years.



First floor landing before treatment with Zinsser.



Eradicate mould and mildew

With innovation at its core, Zinsser is unparalleled in offering the best prevention and removal of mould during the winter months. Universal Degreaser and Cleaner, Mould Killer & Remover, B-I-N® AQUA and PermaWhite form the perfect problem-solving combination for treating and removing mould.

First, simply ensure that your surface is clean, dry and free from anything that will interfere with the paint using Universal Degreaser and Cleaner. Remove any loose material and feather sound edges with a fine grade abrasive paper.

Use Zinsser Mould Killer and Remover to eliminate all visible signs of organic growth to prepare a mould-stained area for painting. Allow to dry.

Next, prime all stained, bare and filled areas with one coat of Zinsser B-I-N® AQUA, the exceptional, water-based primer, sealer, stain killer and odour blocker. With a lightning-fast drying time, B-I-N® AQUA is recoatable in just 45 minutes.

For the final step, decorate with two full coats of Zinsser PermaWhite in your desired colour and finish, a mould-resistant, interior paint that bonds to multiple surfaces including existing solvent-based or glossy paints, flat paint, new dry wall, cement block, concrete and timber.

PermaWhite is the ultimate paint for any room with persistent high-humidity, frequent temperature changes and poor air circulation as it contains a unique biocide designed to protect against fungal degradation.

Zinsser PermaWhite is both stain and moisture resistant, with a superior Class 1 Wet Scrub Rating which allows for everyday cleaning.

The low-odour, water-based formula provides excellent coverage and is designed to resist cracking and peeling for up to seven years. Touch dry in just 30 minutes and recoatable in two hours, PermaWhite is available in Matt, Satin and is tintable to any BS, RAL or NCS colour. ■



ZINSSER 
QUALITY SINCE 1849

For more information and to enquire for a specification service visit www.zinsseruk.com or follow Zinsser on social media @zinsseruk

Are you concerned about the potential risks of an upcoming painting and decorating job?

As with any trade, it's a good idea to brush up on your knowledge before tackling a new project – whether you're a newcomer to the industry or a seasoned veteran. This is especially true for jobs that might form a smaller part of your repertoire. So, before you get started on your next project, big or small, it's important to prepare relevant safety checks.



Health and Safety reminders for decorators

Between 2021–2022, 30% of workplace injuries were from slips, trips or falls, 18% were caused by handling heavy goods and 8% came from high falls. That's a staggering 333,350 preventable injuries. And many of these injuries pose a higher risk to painters and decorators due to the nature of the job. Let's not add any more injuries to that list. Here, the decorating experts at Hamilton cover five key safety points so you can pick up your brush with confidence, whether you're starting out in your painting and decorating career or you fancy a refresher.

Check your equipment

It's important your equipment is up to scratch before starting a job, regardless of scale. Defective equipment is inefficient, costly and dangerous. Ladders and stepladders contribute to a third of all fall-from-height incidents – that's 1,200 major incidents a year. This can be caused by loose or weak rungs, poorly positioned ladders or ladders that aren't well-supported.

Another condition that can be worsened by poor equipment is repetitive strain injury (RSI). Broken brush handles, loose equipment fittings and bad posture all factor into this, so make sure you use well-made equipment – especially when it comes to tools you'll use most frequently.



Learn fire procedures



It's important to have an effective fire plan that covers evacuation and prevention, regardless of whether you're decorating a commercial or residential space.

Over the last year (ending March 2023), an increase of 17% fire-related accidents were reported in the UK. That's 178,737 fires compared to 152,639. For the last three years, we have seen a consistent rise in incidents of fires, so it's time to squash the curve.

Here are a few useful tips to avoid a fire-related accident at work:

- **Keep your workspace tidy** – loose wallpaper and cuttings are prime kindling for electrical fires
- **Dispose of waste** – flammable materials must be disposed of correctly
- **Shut fire doors** – ensure fire doors are securely shut to contain any fires
- **Plan an escape route** – direct escape routes should be planned with colleagues and clients, exits should also remain clear at all times
- **Carry out a risk assessment** – this is useful to detect any workplace hazard, but in the case of a fire, make sure you audit fire alarms, extinguishers, and signage (if applicable) >



A PRO KNOWS

THE UNBEATABLE

DELTEC MASKING TAPE SENSITIVE



- ✓ Low tack tape for sensitive surfaces
- ✓ Ultra sharp paint lines
- ✓ Indoor use up to 4 months
- ✓ Doesn't leave any glue residue



Saves time



Saves money



Best finish ever



100% success guaranteed

FREE SAMPLE!



www.deltectape.com/sample





< Ventilate your workspace

Proper ventilation helps reduce the risk of dizziness, nausea or sinus discomfort caused by inhaling fumes. This is especially dangerous when using a stepladder as dizziness can affect your ability to use the ladder. Dizziness from a high position with less stable footing can be a precarious combination, so it's important to minimise the risk as best as you can.

If natural ventilation from open windows isn't enough, consider using a portable ventilator or extractor fan. For example, if you're painting a kitchen, the cooker range hood can help to extract harmful chemicals from the air. Every little helps with room ventilation as it can take between 14–24 weeks for fumes to completely dissipate and return a room to its natural air quality.

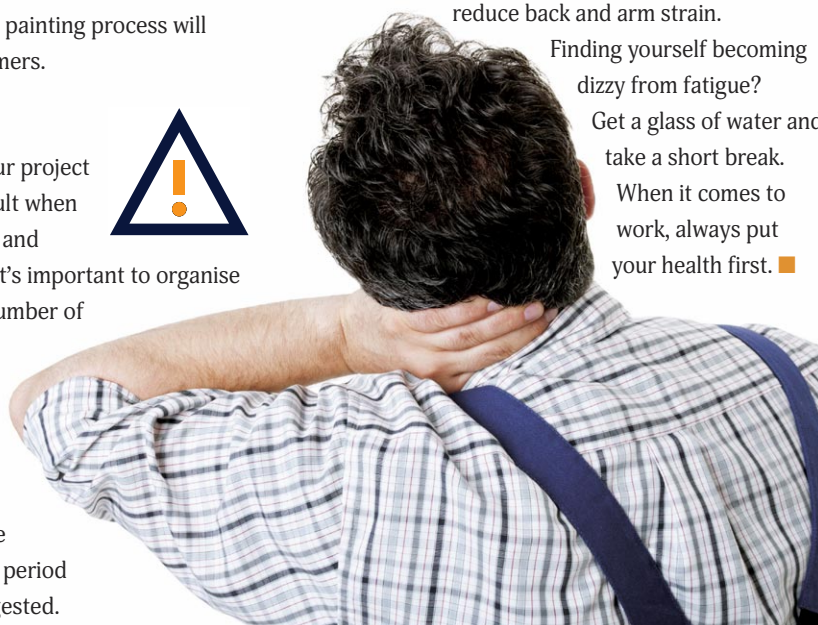
Don't panic, it's still safe for customers to sleep in rooms without irritation to the sinuses after 24 hours of being painted – ample time for the room to dry. However, it's still useful to bear in mind how long it can take to fully ventilate a room from start to finish. Taking precautions during the painting process will accelerate this for your customers.



Clean up

Keeping both yourself and your project workspace clean can be difficult when decorating; mucking in is part and parcel of the trade. However, it's important to organise areas of mess to reduce the number of hazards in your vicinity.

This is just as true regarding your own hygiene, especially when it comes to washing hands. A build-up of corrosive material can damage the skin if left for a prolonged period and the risk is multiplied if ingested.



It's best to make sure you wash your hands before lunch and at regular break intervals.

If you've finished stripping a wall, remove the residual material from the workspace immediately to eliminate further trip hazards. Additionally, use sturdy paint kettles rather than open cans for further stability while working. An organised workspace is a safe workspace.

Practice safe work ergonomics



We often push ourselves too hard on jobs, especially when in the thick of work, where we might overlook regular breaks and the physical strain of a day's labour. Between 2021–2022, an estimated 477,000 workers were affected by work-related muscular injuries, including back pain and repetitive strain injury.

The basics of work safety ergonomics include:

- rotating tasks to reduce muscle strain
- going on regular breaks
- using proper lifting techniques
- adjusting work heights with stepladders to avoid overreaching

This comprehensive manual on workplace ergonomics outlines more of the potential risks caused by poor ergonomic practices. The best way to learn how to improve your safe work practices is by identifying areas of risk and implementing simple solutions. Are you overreaching to paint a ceiling? Use a stepladder to reduce back and arm strain.

Finding yourself becoming dizzy from fatigue?

Get a glass of water and take a short break.

When it comes to work, always put your health first. ■

HAMILTON®
FOR THOSE WHO KNOW

There we have it! You should now be ready to tackle your next job in painting and decorating as safely as possible. We also recommend you continue to update your personal safety procedure as you encounter any further hazards in future jobs.

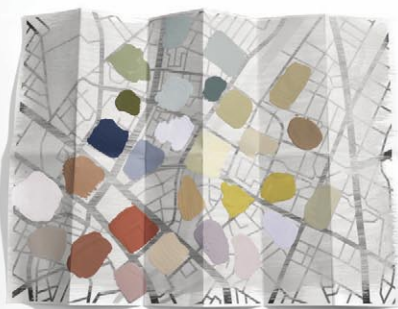
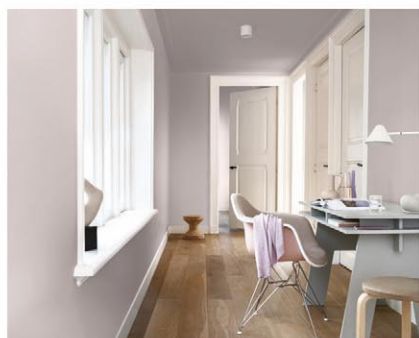
www.hamiltondecoratingtools.co.uk



Dulux
COLOUR OF THE YEAR 2024
**SWEET
EMBRACE™**
70RR 64/034



Dulux
TRADE



CF24

Introducing **Sweet Embrace™**, the 2024 Dulux Trade Colour of the Year, a gentle blossom pink that extends a welcoming touch and infuses any living space with stability, calmness, and softness. Its delicate shade, shifting subtly with light, always radiates warmth.

Used with any of our three complimentary palettes **Sweet Embrace™** works effortlessly to create a sense of calm and softness to home and working spaces.

Download our Dulux Trade Colour of the Year Decorator guide, to find out more about using Sweet Embrace™, at [Duluxtrade.co.uk/CF24](https://duluxtrade.co.uk/CF24)



TEST DRIVE

By David Stokes

My first introduction with the Citan was to drive the delivery guy to the station as I live in a way out of the way place, and the bus service is iffy at the best of times! I found right away the little van was a delight to drive...

Mercedes-Benz Citan



The electronics however, do take some learning, and the steering wheel isn't all intuitive. It would typically take more than a week to master all its functions, but it would be a pleasure to drive once done.

I do like the cruise control as I live in an area where there are miles of 30mph limits, and setting the speed takes the worry of a speeding ticket if you let your concentration wander.

There's lots of storage space in the cab with a full width shelf above your head. A lidded 'locker' between the seats should easily accommodate a 2-litre flask, with smaller flasks accommodated in the door pockets.



In the centre of the dash is a handy touch screen, which gives the driver access to all the functions and a useful picture of what's happening behind the van.

Unlike many rear-facing cameras that only work when reverse gear is chosen, in the Citan, you can also see what's going at the back with a choice of normal and wide-angle vision.

When reversing, the rear-facing picture shows very useful and accurate guidelines of where the van is in relation to the surroundings.

The Citan's seats are very comfortable and would be if one was sitting in them all day. ➤





Competence on all surfaces

**You're no performer – you're a proformer.
Welcome to the FLEX family.**

As a true proformer, you never give up. You give it your all. Together with your team, you master every challenge, deliver perfect results, and surpass your goals. On the job, you're 150 % reliable – just like our tools. That's performance. That's FLEX.

Discover more performance at www.flex-tools.com



this is performance

FLEX



Key specifications

Citan L1 Panel Van
110 CDI 6-speed Manual

Fuel consumption	53.3 mpg (combined)
Breakdown assistance	Free for 12 months
Payload	657kg
Weight	2.23t
Dimensions	4.5m x 2.1m x 1.8m
Load volume	3.6m ³
Wheelbase	2.69m

< The Citan has many features that drivers have come to expect, including ABS and electronic stability control, hill-start assist, crosswind assist and attention assist (which watches out for driver fatigue).

Autonomous Emergency Braking (Active Brake Assist) is included on every model, while active lane-keeping assist, blind-spot monitors and speed limit assist are all offered as options. Air conditioning, multiple airbags and electric windows all come included, as do a few that are often seen as luxuries, such as cruise control and the MBUX screen with smartphone mirroring to act as a sat nav.

All that about the electronics and up-to-date facilities one gets in modern vehicles is all well and good, but we must face the fact that the van's existence for the tradesperson is there to carry stuff.

Behind the cab is the carrying space, able to carry a payload of up to 827kg (including 75kg for the driver) with optional configurations from the basic model. On the floor on both sides are three tie down loops, and a further three waist level on the right hand side, but only one on the left by the rear door owing to there being a sliding side door.

The wide opening rear doors are side hinged and asymmetrical, one being bigger than the other. This allows the driver to load a awkward item without having to put it down. Sliding doors on the side of the van mean access is easy even in tighter parking spaces and gives greater flexibility to loading and unloading.

All in all, this is a versatile small van and comes in at a good price. Good for navigating in built-up areas and handles the country lanes with ease.

Test Drive was in the Diesel Fuel Van, but it also comes as an Electric Version. See all the available configuration options at www.mercedes-benz.co.uk ■



Mercedes-Benz Vans

0207 660 9993

www.mercedes-benz.co.uk



CREATE BEAUTIFUL SURFACES WITH **FILLTITE®** *Fill & Finish*



Discover a superb range of **Ready to Use** or **Powdered fillers** that can totally transform the appearance of any surface. The Fill & Finish product range continues to grow with the addition of new products (including our range of filling knives) and pack size variations.

Tembé



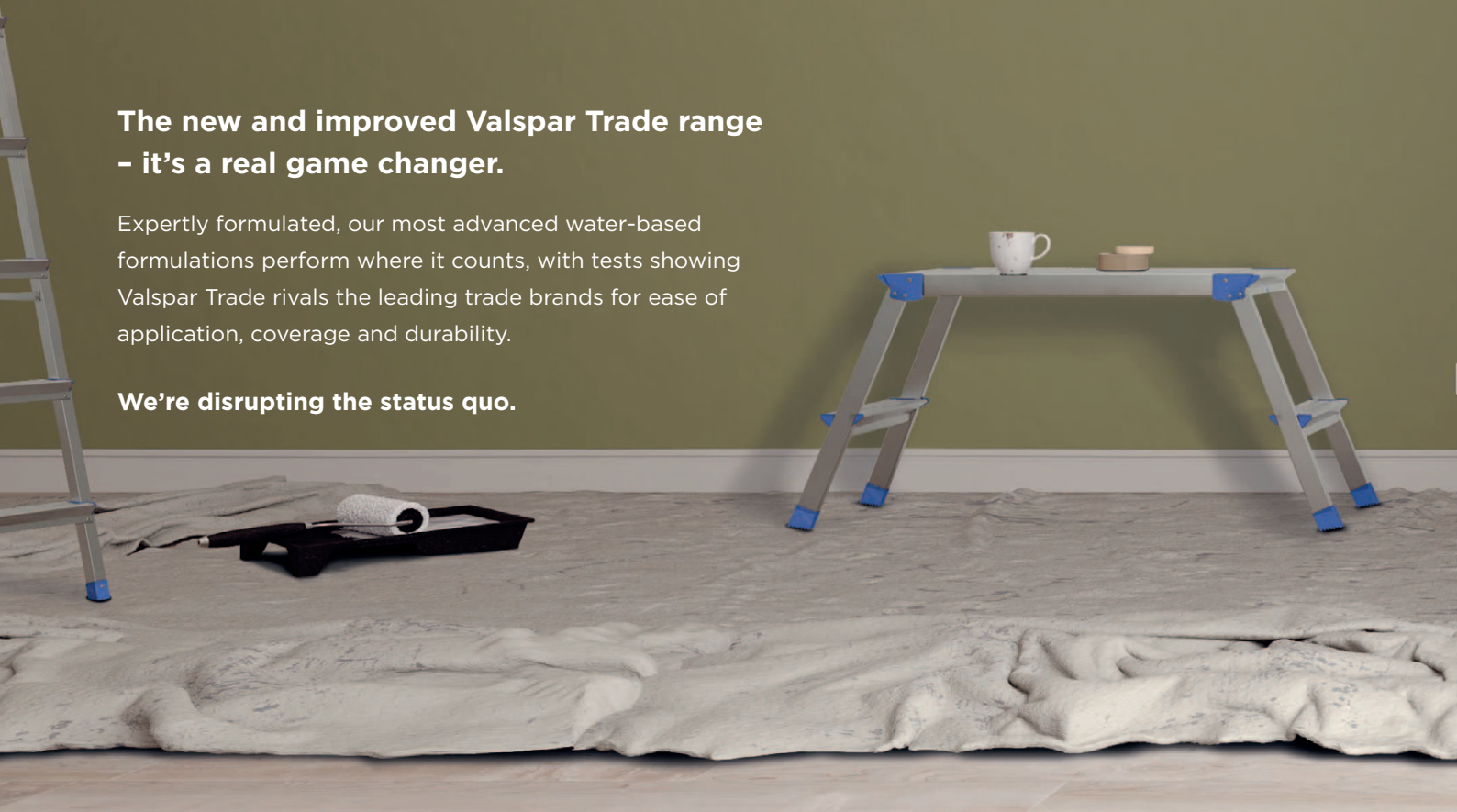
For more details visit: www.filltite.com

GAME CHANGE

**The new and improved Valspar Trade range
– it's a real game changer.**

Expertly formulated, our most advanced water-based formulations perform where it counts, with tests showing Valspar Trade rivals the leading trade brands for ease of application, coverage and durability.

We're disrupting the status quo.



valspar®
TRADE

FORMULATED FOR **THE PERFECT FINISH**

Exclusively at

**TRADE
POINT** 



valspartrade.co.uk

Breche marbles always looks super-scary and like they are a LOT of work and in many cases, they are...



HOW TO *Breche Violette* MARBLING EFFECT

By Cait Whitson



Over the years I have gleaned some lovely tricks and tips from super-skilled people that help to cut down the work (*and the scariness!*) and make a commercially viable technique. I've pulled them all together here, and best of all, the same techniques could be used for any brecciated marble.

People assume that you need lots of fancy brushes, tools and materials for marbling, to assuage this I have done this piece using a quality durable matt that can be bought in small amounts. Although I've finished with a glaze, a matt medium from an art shop or even just adding water would suffice for small areas.

A badger brush is useful but *not vital*, and the other tools are some veining brushes of your choice, a feather, a rag, a sponge, an eraser or paint shaper, and some plastic sheeting.

The talented *Roy Makin* taught me to not get too hung up on materials as his work was carried out with vinyl silk, plastic bags, a chamois and an eraser, and better marbling you'll be hard pushed to find!

Roy and another talent, *Gert-Jan Nijse*, are masters of using a simple eraser to create veins. *Gert-Jan* uses them not only to lift paint away from the surface but also to apply. Quick and effective.

The paints I used here were from Fleur, and the colours were Purple Rain, Chocolate Blush, Elegant Rose and Black. I used their Velatura (Italian for "veil" or Glaze) which is fantastic for marbling as it stays open for long enough to work up but dries nice and hard quite quickly for building layers.

But as I said, **don't get too hung up on materials**, find some colours that match your marble and go from there.

First I laid some colours up (images above), blending three colours - Purple Rain, Chocolate Blush, Elegant Rose - loosely to create the drift and the basis of the 'stones' and used plastic sheeting to frottage the surface.

I pressed the plastic onto the surface and pulled away leaving interesting creases on the surface that can also build the basis of the veining, you can see this in the first of the progressive images.

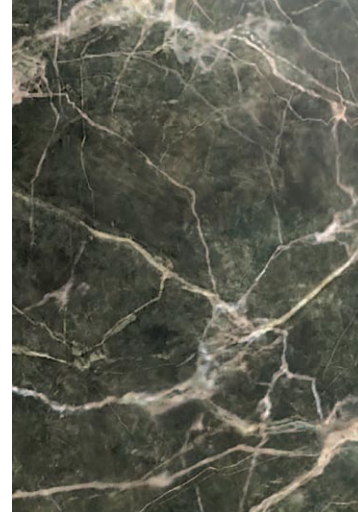
Use a rag and your eraser to wipe away anything you don't like. Once that is in place you can use plastic to print with. Paint your colours onto plastic carrier bags (these work best, I have no idea why) and press it onto the surface. You can see the progression of how I built the background. This was quick and it's so effective. ➤

Build background colour using three shades.

A feather is used to build quick networks of veins.



By utilising the various application techniques to differing extents, and alternative colour palettes, a wide variety of marble effects can be achieved.



< When I first started marbling, I was taught using a feather by Leonard Pardon. Some time after I was taught using a brush and I abandoned my feather however I've started going back to the feather to build quick networks of veins.

The tip of a goose wing feather is an excellent tool for quickly flicking in fine interwoven veins (see previous

page) and at this point nearly all the veins are carried out using the feather and then the eraser. The veins are all tones of the main colours with black added.

For the final stage (see main image on page 52), I made more use of brushes as I tightened the marble up and pulled it together using some Titanium Buff artists acrylic added to soften it. Some judicious use of a sponge to create flecks of colour, break up the stones and create definition finished it off.

Nearly all this is then done with normal paint, a feather, a rag, some plastic bags and an old school eraser. My takeaway is, don't wait till you have ALL the specialist materials and tools, jump in with what you've got and have fun!! ■



Cait Whitson is decorative painter working throughout UK and teaching from her studio in Perth, Scotland.

You can see her work and connect with her on social media: Instagram @paintycait or Facebook /carteblanchedecorativepainters

Her training courses can be found at www.caitwhitson.com



Under 1g/l VOCs

Polyvine

The varnish experts



Revealing our new look Stone and Brick Protector

- ✓ Ultra-low VOCs
- ✓ One coat
- ✓ Waterproof

POLYVINE

Find us in your local Polyvine stockist
or online at polyvine.com



No fuss, no friction, no faff

Welcome to the easy bit.

We're here to help you make sure you always get what you need to get the job done, quickly easily and at a fair, honest price. Speak to your trade specialists and get the right paint, right first time, every time.



HUGE RANGE OF
BRANDS



COLOUR
MATCHING



CLICK &
COLLECT



FREE NEXT DAY
DELIVERY

The PaintShed

www.thepaintshed.com

The smarter choice for trade

Restoring garden furniture may seem daunting, and many throw it all away and purchase a new set. But with a little know-how, you can get furniture looking as good as new again.

HOW TO Restore GARDEN FURNITURE



Above: If only light rust is present, simply paint with Rustol-Deco.



Left: Retain rustic patina whilst adding protection by applying Owatrol Oil.

Rusted metal furniture

Exposure to the outdoor elements will almost always eventually cause metal garden furniture to rust. In most cases, the rust is purely cosmetic and the furniture is still structurally sound, so why not restore it instead?

Owatrol Oil is our highly penetrating, rust inhibiting, air drying oil with a tough, flexible finish. It saturates deep into metal surfaces and pushes out moisture and air to stop rust from spreading.

If you like the rustic charm of patina but want to protect the metal, simply apply Owatrol Oil and stop here. However, if you prefer a coloured look, you can easily apply your desired finish over it.

If your furniture only has slight rusting, you can paint it directly with Owatrol Deco, a multi-surface primer and finish that contains Owatrol Oil, eliminating the need to prime it first.

Bring back colour and/or shine

Have you noticed your table, chairs or even your guttering looking faded and dull? This is a common trait to see, especially on plastic surfaces, and occurs due to exposure from the sun, rain and pollutants.

Polytrol is a colour restoring oil for dull or faded surfaces. It works by penetrating deep into the surface to re-wet the pigments that have dried out, which

restores the lustre and colour. It can also be used to bring back the shine on tarnished metals, whilst offering long-term protection against corrosion.

Another frequently used purpose for Polytrol is on composite doors, restoring the original colour and lustre caused by prolonged exposure to intense UV rays and weathering.

You can make substantial savings, often hundreds if not thousands of pounds, by opting for Polytrol treatment instead of replacing a composite door.

Application of Polytrol is quite straightforward... Ensure the surface is clean and free of contaminants such as dirt, grease, mildew, wax, polish, or silicone, and leave to dry for 24 hours.

Using a brush or lint-free cloth, generously apply the Polytrol and leave it to work for 10–20 mins (working in areas that can be completed in this time) before wiping away any excess.

Do not leave Polytrol on the surface for any longer than 20 minutes and always wipe away the excess before the surface becomes tacky. For a shinier finish, buff with a lint-free polishing cloth. ■



Polytrol restores composite doors and frames too.



You can order any of these products through the Owatrol website with next working day delivery on orders placed before 3pm

01582 585266

www.owatrol-direct.co.uk



Inspired by nature

DESIGNED FOR LIVING

Manufactured in the UK 

MATT
FINISH

SATIN
FINISH

Tough on Stains, Dirt & Scratches

Great results every time.



Enhancing Woods Natural Beauty

Armourflex Hardwax Oil, from Barrettine is a professional, high-quality wood protection coating that offers an outstanding natural finish with exceptional wear and stain resistance characteristics, that's easy to maintain. It contains a blend of natural oils and waxes with a speedy 4hr drying time and is suitable for protecting and enhancing the natural beauty of all interior wood surfaces including hardwood, softwood, parquet and veneer.

Inspired by nature and led by design, Armourflex Hardwax Oil is certified Food & Toy Safe when dry to EN 1186:2002 & EN71:3. As an elegant and protective finish, it complements a range of modern and classic interior styles, whilst protecting the client's investment. Available in matt or satin finish.

Sizes: 1 litre & 2.5 litre.



Contact us for all enquiries:

sales@barrettine.co.uk

www.barrettinePro.co.uk



4 HOUR DRYING TIME 

MANUFACTURED IN THE UK 

AVAILABLE THROUGH NATIONAL STOCKISTS 



5* Star Performance

SCAN ME



BUY NOW & REDEEM

30% OFF

FROM OUR TRUSTED STOCKISTS
BY LEAVING A REVIEW*

T&C's apply. Offer valid for a limited time only.



Wallpaper can add character, style, and personality to any room. However, even the most beautiful wallpaper can be undermined by common installation mistakes, even professional decorators may need to get up on the basics from time to time. James Mellan-Matulewicz, CEO at wallpaper brand Bobbi Beck, shares his top tips...

Avoid common mistakes when **PAPERHANGING**

Not following the instructions

This might seem obvious, but it's the root cause to most issues. Customers often tell us they thought they knew best after installing wallpaper for many years.

All wallpaper is made, installed and maintained differently so it's important to stick strictly to the manufacturer's instructions, even if you're a professional. If a mistake is made when **not** following the instructions, it's likely the supplier won't provide a refund.

Insufficient preparation

The first mistake that many DIY enthusiasts make is not adequately preparing the surface. Failing to remove dirt, dust, and debris, and not repairing cracks or imperfections, can lead to a poor finish.

Begin by thoroughly cleaning the wall surface with a mild detergent and water, repair any cracks or holes with filler and smooth for a seamless appearance. Consider using a wallpaper primer to create a smooth and adhesive-friendly surface for the wallpaper to adhere to.

Misaligned patterns

Aligning patterns correctly is crucial for professional results. Misaligned patterns can be visually jarring and distract from the overall aesthetic.

Use a plumb line or a spirit level to ensure that the first strip is hung perfectly straight. Match the pattern carefully at eye level, and then work up and down to ensure a seamless match throughout.

Bobbi Beck is a carbon neutral design & print studio with a focus on producing luxury wallpapers without damaging the planet.

They work from a dedicated design and print studio in Cornwall, where their team crafts each collection and packs every roll, by hand.

Improper cutting techniques

Cutting accurately around corners, edges, and obstacles is essential. Uneven cuts or jagged edges can detract from the overall appeal.

Measure and mark accurately before cutting, ensure a slight overlap at corners and edges to be trimmed later. Use a straightedge and sharp knife, changing the blade frequently for clean cuts. For outlets or switches, remove the cover plate and use it as a template.

Inadequate adhesive

Using the right adhesive and applying it correctly is vital for longevity. Too much or too little can lead to bubbling, peeling, or uneven adhesion.

Knowing whether your wallpaper is paste-the-wall or paste-the-paper is important, as mixing them up will create problems. Use adhesive recommended by the manufacturer and follow the instructions precisely.

Rushing the installation process

Impatience can be a wallpaper installation's worst enemy, leading to wrinkles, bubbles, and uneven seams. Set aside enough time and remember, patience is key. Smooth as you hang, using a wallpaper brush or plastic smoother. Pay extra attention to seams and edges, they're often what distinguishes a good install from a bad one.

Ordering too much or too little

Ordering the right amount of wallpaper is not a perfect science, especially when covering irregular spaces with obstacles. If the supplier doesn't have a wallpaper calculator and the space is difficult to map out exactly, then a good rule of thumb is to calculate the square meterage and then add 10%. ■



ultra low sheen
for the *perfect* finish

high opacity | alleviates imperfections | flat matt finish

Available at leading trade paint stockists
and Crown Decorating Centres

www.crowntrade.co.uk

It's not just paint,
it's personal.

Painting behind a log burner or fireplace requires a specialist coating that can withstand the high temperatures.

Nick Church, Senior Technical Specialist and ICorr Level 3 Paint & Fire Proof Coating Inspector at Brewers has some tips...

HOW TO Paint Behind A LOG BURNER

Why isn't regular paint suitable?

When in use, wood burners can raise the temperature of nearby walls, mantles and surrounds to extreme temperatures. This poses problems for regular paint systems. From an aesthetic point of view, cracking, peeling and flaking and discolouration of surfaces is common. From a safety point of view, paints that aren't designed for painting a fireplace are often combustible.

Earthborn Claypaint

If you have brick or plaster behind your wood burning stove, you may be wondering which type of paint to use. Earthborn Claypaint has a high clay content and is free from acrylics and oils. It can be used to paint bare brick and new plaster, including lime plaster, along with previously painted areas. Plus, it's certified with a Class '0' reaction to fire rating. This means it can withstand very high temperatures (up to 80°C) without affecting the paint. Its ultra-flat matt finish also complements the soft glow of a fire, adding to the cosy feel of the space.

If you're thinking of painting around your fireplace, make sure the ambient temperature is warm enough to allow the paint to dry. ■



Brewers
www.brewers.co.uk

earthborn®
Earthborn
www.earthbornpaints.co.uk



To achieve the best results, ensure the surfaces to be painted are sound, clean, dry and dust-free. Remember to work in a well-ventilated area.

Clean surfaces thoroughly

Remove dirt, grease and any other surface contamination that could affect adhesion. Get rid of any dirt or soot using a vacuum and use a stiff wire brush to remove dirt from the crevices in brick work.

Protect the log burner

Cover your stove in plastic to make sure it is protected from any paint splashes.

Sanding surfaces

It is good practice to key the surface while wet using waterproof abrasive paper or pads if the surface is new or you are applying a water-based finish on top of solvent-based or glossy paint, or on a very hard and impermeable surface.

Surface defects

Fill surface defects with an appropriate filler. Depending on the paint you're using you may need to spot prime any filled areas. Refer to the manufacturer's instructions.

Stabilise the surface

Previous coatings that are blistering or unstable should be removed and a suitable stabilising or primer-sealer product used if necessary. Use Earthborn Isolating primer for dry stains and use two coats for heavy staining. Do not use on lime plaster/render as this can inhibit the breathable properties of the render.

Priming and painting

Earthborn recommends diluting the first coat of Claypaint with 20% water which is really important for more porous surfaces. Apply your second coat of Claypaint and you're good to go!



Your choice for outdoor jobs



20%
OFF



YOUR FIRST PURCHASE
WITH A BREWERS ACCOUNT*

Ask in-store or visit brewers.co.uk

*New cash or credit account holders only

Over 200 stores nationwide

Taking a measure of tapes

While a laser measure may have become part of the kit for longer distances, there's still a use for a standard tape measure in the toolkit.

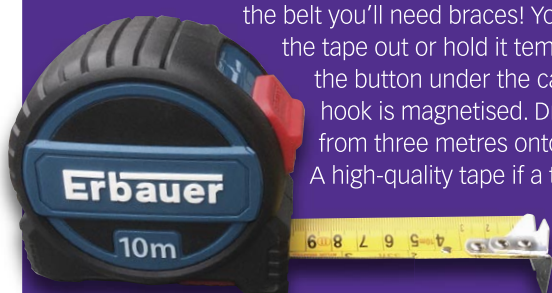
Looking at whether the tape was printed on both sides, how easy is it to read, and how far could it stand out before it 'broke'...

David Stokes lined up nine tape measures and put them to task.

Erbauer (Screwfix) 715XH

Price £24.99 **Scales** Imperial and metric
Length 10 metres **Standout** 4 metres

A real tough cookie. The carbon steel tape is nylon coated and has the scale on both sides. It's a heavy piece of kit, if worn on the belt you'll need braces! You can lock the tape out or hold it temporarily with the button under the case, the tape hook is magnetised. Drop tested from three metres onto concrete. A high-quality tape if a trifle heavy.



Erbauer (Screwfix) 738XH

Price £19.99 **Scales** Imperial and metric
Length 8 metres **Standout** 4 metres

Another toughie, with the same carbon steel nylon covered tape having the scale printed on both sides. Can stand out, four metres like its stable mates and has the same locking systems, solid or temporarily, the tape hook is magnetised. Also drop tested, this high quality tape is somewhat lighter.



Erbauer (Screwfix) 371XH

Price £14.99
Length 5 metres
Scales Imperial and metric
Standout 4 metres

You get the same tough high quality as you get with the larger editions in a much lighter weight and the tape hook is magnetised. The same locking mechanism as its larger siblings.



BEST BUY

Clarke (Machine Mart) CHT493

Price £10.19 **Scales** Imperial and metric
Length 10 metres **Standout** 2.2 metres

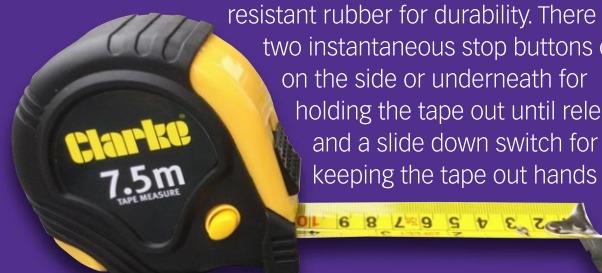
This is the 'biggy' of the Clarke line up, 10 Metres long, rather on the heavy side; the case is covered in a rubberised material aiding a firm grip. Like its siblings you can temporarily hold the tape out with two buttons, one on the side and the other underneath. On the front is the slide button that will hold the tape out hands free.



Clarke (Machine Mart) CHT492

Price £5.99 **Scales** Imperial and metric
Length 7.5 metres **Standout** 1.6 metres

A reasonably tough and chunky tape measure for both professional and DIY use which is covered with an impact resistant rubber for durability. There are two instantaneous stop buttons either on the side or underneath for holding the tape out until released and a slide down switch for keeping the tape out hands free.



ALL-SURFACE PRIME+FINISH



USE ONE CAN FOR ALL YOUR PROJECTS



CLADDING



GUTTERING



UPVC WINDOWS



DOORS



HARDWOOD



METAL FENCING

For more information, please email: enquiries@bradite.com

  @Braditepaints www.bradite.com



Clarke (Machine Mart) CHT491

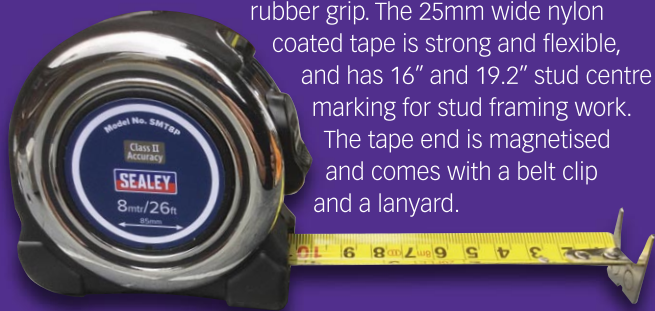
Price £3.59 **Scales** Imperial and metric
Length 5 metres **Standout** 1.6 metres

This 5 metre/16ft measure features an impact resistant rubber casing for durability. There's the normal slide down thumb switch to lock it out, plus temporary buttons underneath and on the side. The Clarke tapes do not have a magnetised hook, and although scale is in metric and imperial, it's only on top.

**Sealey Professional SMT8P**

Price £18.54 **Scales** Imperial and metric
Length 8 metres **Standout** 2.2 metres

The SMT8P features a chrome body, with comfortable firm rubber grip. The 25mm wide nylon coated tape is strong and flexible, and has 16" and 19.2" stud centre marking for stud framing work. The tape end is magnetised and comes with a belt clip and a lanyard.

**Sealey Professional SMT8H**

Price £16.14 **Scales** Imperial and metric
Length 8 metres **Standout** 2.2 metres

A couple of pounds cheaper, this 8-metre tape is fully rubberised, but it has a temporary tape stop button under the body. Comes with a magnetised tape hook, belt clip and lanyard. Other than that, very much the same piece of kit as the SMT8P.

**Sealey Professional AK995**

Price £9.52 **Scales** Imperial and metric
Length 7.5 metres **Standout** 2.2 metres

A bright yellow plastic case with a rubberised covering to give a firm grip, but the tape hook is not magnetised. The tape lock ceased to work on this model whilst testing, so hard to recommend this over the other Sealey tapes featured here! Comes with a belt clip and lanyard.



Paint, mount and repair - Strength to rely on


Take advantage of our 125 year experience in adhesive technology.

Put our products to the strongest challenge, **we dare you!**

- Double sided mounting tapes
- Extreme weatherproof repairing tapes
- Market leading masking tapes



tesa.co.uk

 **Decorating Centre Online**



Don't sweat it in store.
Get it delivered to your door.



**10%
off**

Scan to register your pro
account today and get 10%
off your first order.



Best value.



Next day delivery.



Dedicated service.

www.decoratingcentreonline.co.uk

dcopro.

by  **Decorating Centre Online**



Zinsser B-I-N Aqua

Famous for solving painting and decorating problems, Zinsser has launched B-I-N® AQUA, a water based, four-in-one primer that contains a durable and robust resin which promises the same trusted performance advantages as B-I-N® alongside the added advantage of outdoor use. With an advanced high-hiding formulation, B-I-N® AQUA can be used as a full-surface primer on varnish, glossy paint, wood panels, building boards, PVC, plywood and more. The specialist stain-killing formula blocks tannin bleed, water, grease, oil, mildew, crayon, lipstick stains and delivers effective knot blocking, seals resin and sap streaks. Alongside lightning-fast drying times,

B-I-N® AQUA, blocks smoke stains, seals odours from fire damage, nicotine, soot, fireplaces and heaters. Available in 500ml, 1L, 2.5L and 5L pack sizes, it can be applied by airless sprayer, brush, roller and is available in white or can be tinted to pastel and mid-tone colours.

www.zinsseruk.com

Peacock Feather Wallpaper hanging tools

The Easytrimmer makes hanging wallpaper simple. Ergonomically designed with angled edge that smooths as it cuts for a perfect finish. It can be used against any edge or corner. Includes four 9mm snap off blades.

Wallpaper Seam Roller is a 3-in-1 rust-resistant, chrome plated metal rod with smooth rolling action for pressing down wallpaper joints, external corners and internal corners.

Wallpaper Smoothing Tool has a double bevel edge, made from cut-resistant material gives you a clear advantage gliding the tool over the surface to remove air pockets and imperfections.

View their demo videos on TikTok @peacock.feather

www.peacockfeather.co.uk



Hamilton Perfection CleanEdge™

For 270 years Hamilton Decorating Tools have revolutionised the way painting tools are made. With paint formulations continuously evolving, they know that one brush does not suit all. That's why they have developed a brand new Perfection CleanEdge™ brush selection which will replace natural bristle completely. These new CleanEdge™ synthetic filaments have been developed to mimic the structure of natural bristle, outperform it and has the benefit of being easier to clean, with no need to break in. These firmer, shorter filaments allow you to push and drag thicker paints with ease, achieving even paint flow for superbly accurate cutting-in.

www.hamiltondecoratingtools.co.uk

THE PROFESSIONAL PAINTER & DECORATOR GEAR GUIDE

DALAPRO ROLL NOVA

A ready mixed roller applied wall covering for smoothing over walls to a professional finish



Coming soon to your local decorator centre

- **Time saving:** no mixing, just roll straight from the tub for even distribution and full coverage
- **Work smarter:** approx 8-hour drying time, a re-sealable tub for less waste and only a 7-9" roller required
- **Consistent quality:** a high-quality professional finish each time, easy to sand, adding value to your projects



TriTech T3, T15 and EZ Loader Cart

TriTech Industries is set to introduce two new paint sprayers at the National Painting and Decorating Show in Coventry. See the recently launched T3 airless paint sprayer, which weighs less than 14kg and supports a .021 size tip, a great addition to every decorator's fleet of paint sprayers as well as an entry level model for those decorators that are new to spraying.

The new entry level machine has all the quality and performance that TriTech has become known for. Solid stainless steel piston, aircraft grade aluminum manifold, precision motor control for excellent pressure control and minimisation of dead band at lower pressures, all aluminum motor cover – It's all there in the new T3!

TriTech will also be introducing the all new T15 at the Show, designed with the production decorator in mind. This highly capable sprayer can spray up to 5.11 litres of paint per minute through a .035 spray tip.

Also on show is the all new EZ Loader Cart, which makes the loading and unloading of the large commercial paint sprayers easier for one person. This new innovation is something that you are going to want to see in person. Be sure to stop by Stands 4 and 5.

www.tritechindustries.com



Crown Trade Clean Extreme Clean Air

Crown Trade Clean Air is the latest edition to the Clean Extreme range and is ideal for commercial projects, where environmental regulations like BREEAM and LEED are important. The formula contains innovative air purifying technology that absorbs formaldehyde, found in things like new flooring and furniture, helping to improve the air quality in a room from the very first coat. Clean Air is also equipped with Crown Trade's unique Breatheasy®, 99% solvent free technology that limits exposure to airborne triggers of asthma and allergies, for a healthier build environment.

www.crownpaintsprofessional.com



Painter's Pack Rollers 'n' Tray Set

The latest addition to the Painter's Pack range is a new eight-piece rollers and tray package that consists of a 9" x 1 3/4" roller frame with two sleeves, a 4" mini-frame with three sleeves and polypropylene tray.

The 9" frame is strong and lightweight, with excellent balance, and the six-wire cage reduces sleeves 'walking' off. The sleeves themselves feature thermal bonded woven polyester with 1/2" nap.

Both the 9" and mini-roller frame also accept threaded extension poles for reaching those high spots.

www.ajsystemseurope.co.uk.com

PROFESSIONAL PAINTERS AND DECORATORS TOOLS

CORONA®



BELIEVE IN BETTER

Official UK distributor AJ Systems Europe Ltd

Registered Office: 20-22 Wenlock Road, London N1 7GU 0333 2021031 / 07798 678220

Polyvine Stone and Brick Protector

There's a new look for Polyvine Stone and Brick Protector which highlights its eco credentials and ease of use.



Invisible, penetrative and waterproof, Stone and Brick protector seals and protects without changing the appearance of the substrate

– all with one coat. This is a high-performing coating penetrates porous substrates to form a barrier to water, moisture, grease, oil acid, alkali and salts.

It'll also suppress mould and fungal growth, and the formation of salts on natural masonry surfaces.

Use the Stone and Brick Protector on interior and exterior stone, brick, flagstones, fireplaces, exposed stone walls, sandstone, plaster, slate, stone window ledges and more.

www.polyvine.com



ProDec Ice Fusion roller sleeves

"The closest to a spray finish I've ever seen from a roller" is something that's been said often from decorators about Ice Fusion rollers, and manufacturers ProDec have added two new sizes to the range that are now available.

New for 2023 is a 4" jumbo mini, available in a twin pack, that holds twice as much paint for less reloading. Featuring ProDec's unique Fused Fibre Technology, Ice Fusion's advanced polymer blend fabric is lint free so it can be used straight from the packet without the productivity loss associated with pile shed.

ProDec has also launched an 8 pack of 2" micro rollers, which are ideal for painting awkward surfaces like railings, spindles and panel radiators much faster than a brush and with less wastage and spatter than standard mini rollers, as well narrow spaces that wider rollers struggle to reach.

www.prodec.uk.com



for professional
decorators

BE PART OF SOMETHING BIGGER

www.paintingdecoratingassociation.co.uk

Call: 024 7635 3776

- ☒ Legal Support
- ☒ Resources
- ☒ Industry News
- ☒ Market Profile
- ☒ Trade discounts

Scan to see how
we can help you:



Owatrol VC175

Mould Killing Additive

Owatrol VC175 is a powerful and long lasting additive for the prevention of mould, mildew and algae.

- ✓ A 50ml bottle of **VC175** will treat **10 litres** of any type of paint
- 💧 Perfect for use in **bathrooms, kitchens** or any other **humid environment**
- 🔧 Can be added to **paint, timber stain, textured coatings, grout, mortar and adhesives**
- ✓ A single treatment is enough to **last for years**



BETTER LOOKING, FOR LONGER

The choice of professionals and enthusiasts for over 100 years.

OWATROLDIRECT.CO.UK 01582 592707

OWATROL
ADD LIFE TO YEARS

Mould Growth Consultants *Mould Eradication Kit*



"My walls are damp", "my ceiling is damp" – there are not many Maintenance Managers, Housing Managers and Surveyors across the Country who have not heard this complaint from tenants in the 'condensation season' from October to April. But it is not damp in the truest sense...

There are 14 types of damp, ranging from rising damp, penetrating damp, bursts, leaks and spillages, through to condensation. 80-85% of the complaints of damp are complaints of condensation causing black mould growth on walls and ceilings, only 15-20% are true damp problems.

A typical family can produce up to 25 pints of moisture a day, when it contacts any cold surfaces, condensation will form.

Black mould problems are a favourite topic for the Local Press, and this year have attracted the attention of ITV news investigators and National Newspaper coverage, not good publicity for certain Local Authorities and Housing Associations.

Hidden dangers

Mould is not only ugly, it causes untold misery to tenants with black growths covering walls and ceilings, clothes and furnishings being contaminated, and their health at serious risk from the airborne spores, as well as unpleasant musty smells throughout the property.

Every dwelling, irrespective of its construction, contains mould spores which are dormant and completely harmless. Mould needs very little nutrient and will grow irrespective of the decorative finish, starting in corners, wall junctions and behind wardrobes, areas of least air movement.



Mould spores cause a wide range of upper respiratory complaints and allergic reactions, including asthma, bronchitis, nausea, malaise, and food poisoning.

Taking responsibility

Under the Housing Health and Safety Rating System (HHSRS), mould is a Category 1 hazard and the Homes (Fitness for Human Habitation) Act 2018 states, it is the responsibility of the landlord to resolve problems. The Housing Ombudsman has now stated the problems cannot be attributed to 'lifestyle issues'.

It is extremely unfortunate that it has taken the recent tragic death of a child due to mould, according to the coroner, for the problems of mould to be acknowledged and addressed with the seriousness they deserve.

Taking action

MGC's mould treatments have been successfully used for over 56 years by Local Authorities, Housing Associations, private landlords and homeowners.

All MGC mould treatments, fungicidal additives and fungicidal paints are approved under COPR 1986 (As amended) by the Health and Safety Executive and listed in M3NHF Schedule of Rates for mould treatment.

There is a bulk treatment for Works Departments and contractors, and a smaller kit is approved for amateur and tenant use. Sempatap Thermal insulation will help reduce condensation.

www.mgcltd.co.uk



BLACK MOULD AND CONDENSATION

Every year these problems are inevitable



Black mould is a problem which is widespread in homes throughout the UK.

- It is unsightly and homes smell musty.
- It can cause serious health problems.
- It will ruin decorations, furniture and clothes.

MGC's Mould Eradication Kit has been supplied for over 25 years to Housing Associations and Local Authorities for successfully treating mould problems.



The Mould Eradication Kit contains everything that is needed to treat 10-12²m of mould, all the products in the kit are approved under C.O.P.R. for amateur/tenant use.



- Proven Mould Treatments.
- Simple and easy to use.
- Used for over 56 years by Local Authorities, Housing Associations and Private Landlords.
- Long lasting in severe condensation areas.



- All products approved under C.O.P.R. by the H.S.E.
- For large contaminations of mould the eradication system is available in 1 litre and 5 litre containers.
- Mould products listed in M3NHF Schedule of Rates.



MOULD GROWTH CONSULTANTS LIMITED
For further help, information and advice please telephone our
sales office on 01372 743334 or email info@mgcltd.co.uk
website www.mgcltd.co.uk





The Studio Dean Edit A Slice of the Northumbrian Countryside on Your Wall

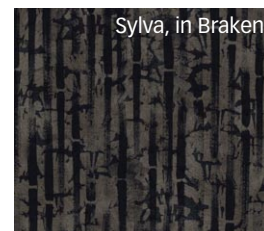
The interior designers at Studio Dean have launched an original collection of luxury wallpapers called EVOLVED inspired by their native Northumberland's iconic forests and countryside.

The papers were designed using leaves, feathers, bark and other beautiful patterns found in the forests near Studio Dean's HQ at Dissington Hall, a Northumberland stately home. The interior designers used their artistic skill and experience to turn them into timeless papers that they now use regularly in their high-end interior design projects.

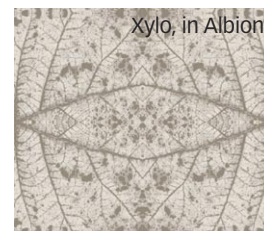
Several of the papers, Athalia, Sylva, Asteria and Xylo are based on local leaves and trees and are becoming increasingly sought after during the recent 'forestcore' trend.

The Hali and Kairi papers are based on chunky weave natural fabric such as jute, and are so realistic you have to touch them to believe they are paper! They come in a range of nature-inspired colours that add warmth and texture to walls with a subtle, timeless elegance.

All papers are printed to order on FSC certified paper using water-based ink to eliminate waste and pollution.



Sylva, in Braken



Xylo, in Albion



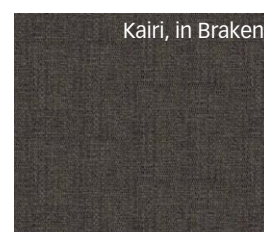
Athalia, in Braken



Asteria, in Kaolin



Hali, in Mushroom



Kairi, in Braken



Feature wall using Hali, in Olivine

THE
STUDIO DEAN
Edit

Cathy Dean founded Studio Dean in 2016 with a desire to blend architectural thinking with interior design. Studio Dean now has a team of brilliant designers working to create balanced, beautiful and functional homes across the North East.

The team has a plethora of experience in interior design and also have textile design, product and production and print design skills. Cathy is always keen to build on the ability and talent of her team and empower them to run with ideas.

www.studiodeanedit.com/shop/wallpaper

Brewers
DECORATOR CENTRES

Metallic Squares, Grey and Silver
from the Albany Geometric Wallpaper Collection

Your choice for big jobs



20%
OFF



YOUR FIRST PURCHASE
WITH A BREWERS ACCOUNT*

Ask in-store or visit brewers.co.uk

*New cash or credit account holders only

Over 200 stores nationwide



HIPPO®

HIGH PERFORMANCE



MULTI-PURPOSE BAMBOO WIPEES

**HELPING YOU
GO GREEN AND
STAY CLEAN!**

- Recyclable pouch
- Reusable & Recyclable tub
- 85% less plastic per refill

*A great alternative
to plastic wet wipes!*



Tembe®

Tel 01302 770 234 Email sales@tembediy.com www.tembediy.com

Tembe DIY Products Ltd, Delta Court, Sky Business Park, Doncaster Sheffield Airport, Doncaster, South Yorkshire DN9 3GN